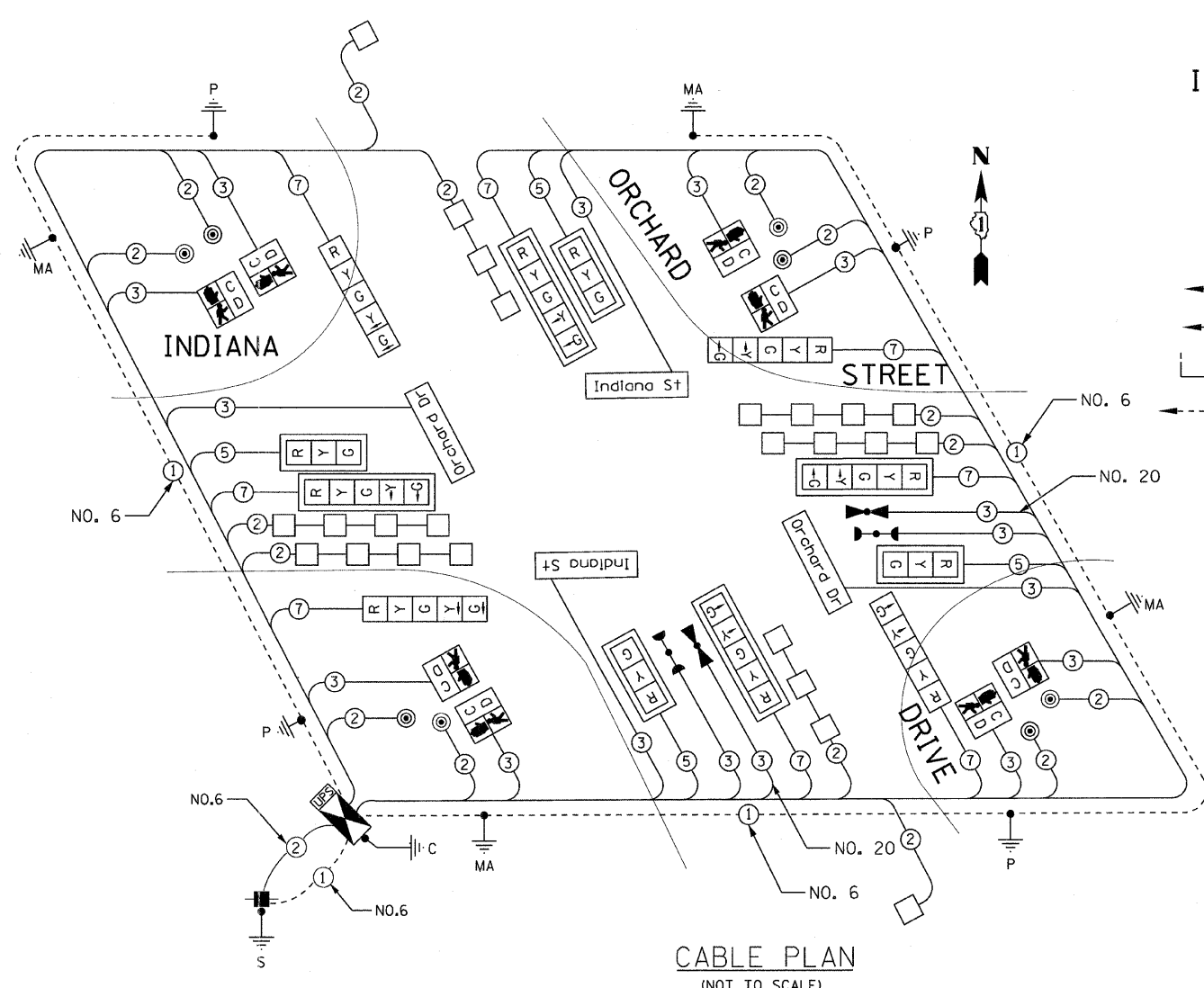
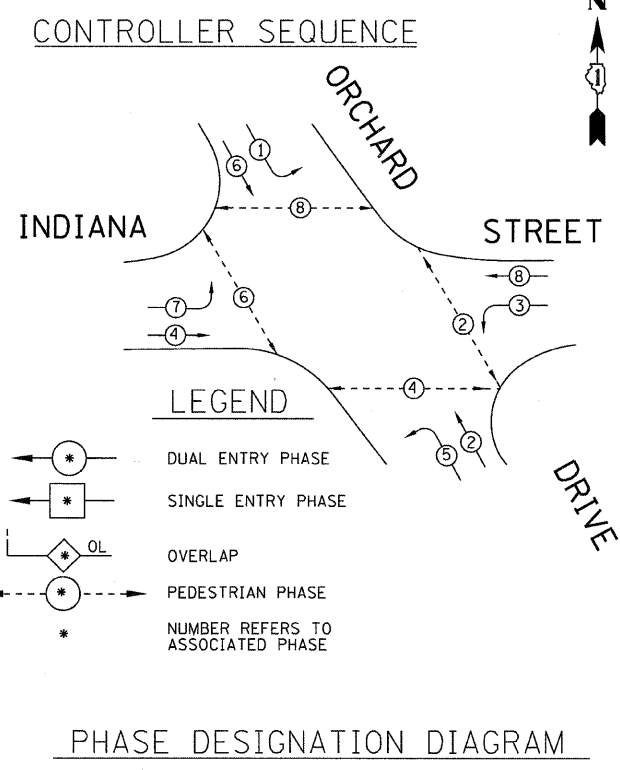


SCHEDULE OF QUANTITIES

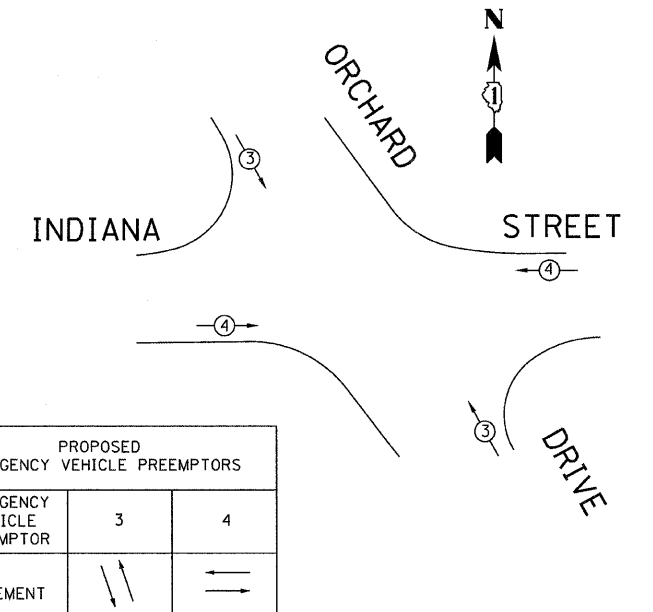
80500010 SERVICE INSTALLATION - GROUND MOUNTED	EACH	1
81028200 UNDERGROUND CONDUIT, GALVANIZED STEEL, 2" DIA.	FOOT	770
81028210 UNDERGROUND CONDUIT, GALVANIZED STEEL, 2 1/2" DIA.	FOOT	68
81028220 UNDERGROUND CONDUIT, GALVANIZED STEEL, 3" DIA.	FOOT	71
81028240 UNDERGROUND CONDUIT, GALVANIZED STEEL, 4" DIA.	FOOT	284
81400100 HANDHOLE	EACH	4
81400200 HEAVY-DUTY HANDHOLE	EACH	4
81400300 DOUBLE HANDHOLE	EACH	2
85700200 FULL-ACTUATED CONTROLLER AND TYPE IV CABINET	EACH	1
86200300 UNINTERRUPTIBLE POWER SUPPLY, EXTENDED	EACH	1
87301215 ELECTRIC CABLE IN CONDUIT, SIGNAL, NO. 14 2C	FOOT	1307
87301225 ELECTRIC CABLE IN CONDUIT, SIGNAL, NO. 14 3C	FOOT	1757
87301245 ELECTRIC CABLE IN CONDUIT, SIGNAL, NO. 14 5C	FOOT	658
87301255 ELECTRIC CABLE IN CONDUIT, SIGNAL, NO. 14 7C	FOOT	1275
87301305 ELECTRIC CABLE IN CONDUIT, LEAD-IN, NO. 14 1 PAIR	FOOT	1370
87301805 ELECTRIC CABLE IN CONDUIT, SERVICE, NO. 6 2 C	FOOT	151
87301900 ELECTRIC CABLE IN CONDUIT, EQUIPMENT GROUNDING CONDUCTOR, NO. 6 1 C	FOOT	652
87502500 TRAFFIC SIGNAL POST, GALVANIZED STEEL 16 FT.	EACH	4
87700170 STEEL MAST ARM ASSEMBLY AND POLE, 26 FT.	EACH	1
87700180 STEEL MAST ARM ASSEMBLY AND POLE, 28 FT.	EACH	2
87700200 STEEL MAST ARM ASSEMBLY AND POLE, 32 FT.	EACH	1
87800100 CONCRETE FOUNDATION, TYPE A	FOOT	16
87800150 CONCRETE FOUNDATION, TYPE C	FOOT	4
87800400 CONCRETE FOUNDATION, TYPE E 30-INCH DIAMETER	FOOT	44
88030020 SIGNAL HEAD, LED, 1-FACE, 3-SECTION, MAST-ARM MOUNTED	EACH	4
88030100 SIGNAL HEAD, LED, 1-FACE, 5-SECTION, BRACKET MOUNTED	EACH	4
88030110 SIGNAL HEAD, LED, 1-FACE, 5-SECTION, MAST-ARM MOUNTED	EACH	4
88102717 PEDESTRIAN SIGNAL HEAD, LED, 1-FACE, BRACKET MOUNTED WITH COUNTDOWN TIMER	EACH	8
88200210 TRAFFIC SIGNAL BACKPLATE, LOUVERED, ALUMINUM	EACH	8
88500100 INDUCTIVE LOOP DETECTOR	EACH	8
88600100 DETECTOR LOOP, TYPE I	FOOT	1186
88700200 LIGHT DETECTOR	EACH	2
88700300 LIGHT DETECTOR AMPLIFIER	EACH	1
88800100 PEDESTRIAN PUSH-BUTTON	EACH	8
89000100 TEMPORARY TRAFFIC SIGNAL INSTALLATION	EACH	1
89100400 ILLUMINATED SIGN, LED	EACH	4
89502300 REMOVE ELECTRIC CABLE FROM CONDUIT	FOOT	2645
89502375 REMOVE EXISTING TRAFFIC SIGNAL EQUIPMENT	EACH	1
89502385 REMOVE EXISTING CONCRETE FOUNDATION	EACH	8
89502380 REMOVE EXISTING HANDHOLE	EACH	8
Z0073510 TEMPORARY TRAFFIC SIGNAL TIMING	EACH	1
X8730250 ELECTRIC CABLE IN CONDUIT, NO. 20 3/C, TWISTED, SHIELDED	FOOT	232



CABLE PLAN
(NOT TO SCALE)



PHASE DESIGNATION DIAGRAM



EMERGENCY VEHICLE PREEMPTION SEQUENCE

I.D.O.T TRAFFIC SIGNAL INSTALLATION ELECTRICAL SERVICE REQUIREMENTS					TOTAL WATTAGE
TYPE	NO. LAMPS	WATTAGE INCAND.	LED	%OPERATION	
SIGNAL (RED)	12		17	0.50	102.00
(YELLOW)	12		25	0.25	75.00
(GREEN)	12		15	0.25	45.00
ARROW	16		12	0.10	19.20
PED. SIGNAL	8		25	1.00	200.00
CONTROLLER	1	100		1.00	100.00
ILLUM. SIGN	4		90	0.50	180.00
VIDEO DET.	0		150	1.00	0
LUMINAIRE	0	250		0.50	0
FLASHER				0.50	-
TOTAL =					721.20

ENERGY COSTS TO:
VILLAGE OF PARK FOREST
350 VICTORY DRIVE
PARK FOREST, ILLINOIS 60466
ENERGY SUPPLY CONTACT: VALERIE MURPHY
PHONE: (708) 235-2346
COMPANY: COM ED

CABLE PLAN LEGEND
(NOTE: SEE DISTRICT 1 STANDARD TRAFFIC SIGNAL DESIGN DETAILS SHEET FOR FULL LEGEND)
Indiana St LED INTERNALLY ILLUMINATED STREET NAME SIGNS

PROPOSED EMERGENCY VEHICLE PREEMPTIONS		
EMERGENCY VEHICLE PREEMPTOR	3	4
MOVEMENT		

COPYRIGHT © 2011 BY BAXTER & WOODMAN, INC.
 ALL RIGHTS RESERVED. THIS DRAWING IS THE PROPERTY OF BAXTER & WOODMAN, INC. AND IS NOT TO BE REPRODUCED OR TRANSMITTED IN ANY FORM OR BY ANY MEANS, ELECTRONIC OR MECHANICAL, WITHOUT THE WRITTEN PERMISSION OF BAXTER & WOODMAN, INC.
 LICENSE NO. 084-000233 EXPIRES 4/30/2015
 P:\Cyril\lake\PMF\7\060670\PH2-ts-cable-4-INDIANA.sht
 2/3/11 2:33 PM



DESIGNED - JUF	REVISED -
DRAWN - MAC	REVISED -
CHECKED - TAO	REVISED -
DATE - 10/31/11	FILE - 060670-PH2-ts-cable-4-INDIANA.sht

**STATE OF ILLINOIS
ORCHARD DRIVE IMPROVEMENTS**

**TRAFFIC SIGNAL CABLE PLAN,
PHASE DESIGNATION DIAGRAM AND SCHEDULE OF QUANTITIES
ORCHARD DRIVE AND INDIANA STREET**

F.A.U. RTE.	SECTION	COUNTY	TOTAL SHEETS	SHEET NO.
2836	06-00090-00-FP	COOK	200	128
FED. ROAD DIST. NO. 1 ILLINOIS FED. AID PROJECT			CONTRACT NO. 63635	
SCALE: NONE			STA. TO STA.	