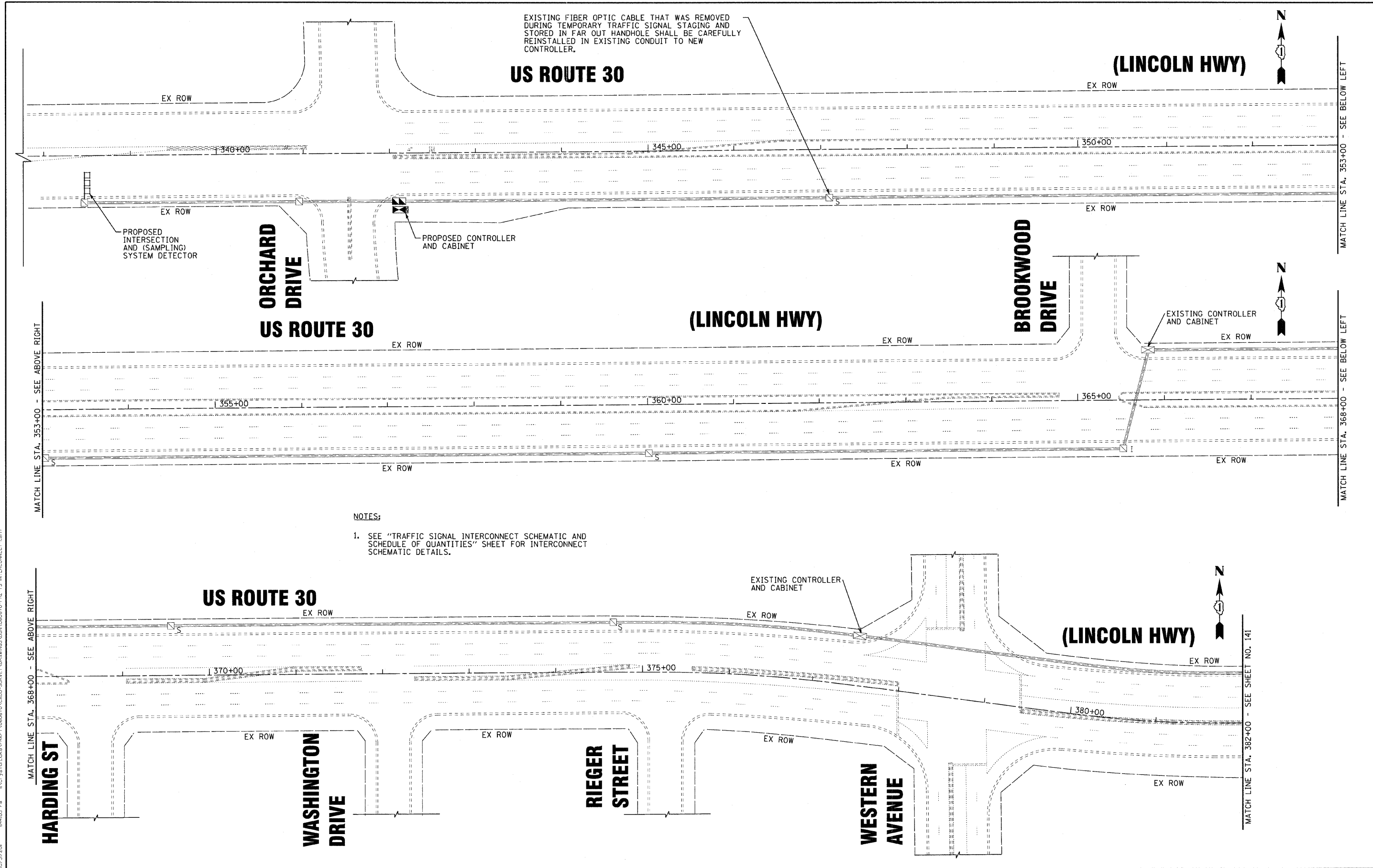


EXISTING FIBER OPTIC CABLE THAT WAS REMOVED DURING TEMPORARY TRAFFIC SIGNAL STAGING AND STORED IN FAR OUT HANDHOLE SHALL BE CAREFULLY REINSTALLED IN EXISTING CONDUIT TO NEW CONTROLLER.



- NOTES:
- SEE "TRAFFIC SIGNAL INTERCONNECT SCHEMATIC AND SCHEDULE OF QUANTITIES" SHEET FOR INTERCONNECT SCHEMATIC DETAILS.

COPYRIGHT © 2011 BY BAXTER & WOODMAN, INC. PROJECT NO. 060670-PH2-TS-INTERCONNECT-1-11
 LICENSE NO. 184-000221, EXPIRES 4/30/2013
 10/23/2011 10:44:03 PM



DESIGNED - JJF	REVISED -
DRAWN - CJC	REVISED -
CHECKED - TAO	REVISED -
DATE - 10/24/11	FILE - 060670-PH2-TS-INTERCONNECT-1.sht

STATE OF ILLINOIS
 ORCHARD DRIVE IMPROVEMENTS

TRAFFIC SIGNAL INTERCONNECT PLAN
 US ROUTE 30 (LINCOLN HWY) AND ORCHARD DRIVE

SCALE: 1" = 50'
 STA. TO STA.

F.A.U. RTE.	SECTION	COUNTY	TOTAL SHEETS	SHEET NO.
2836	06-00090-00-FP	COOK	200	140
FED. ROAD DIST. NO. 1		ILLINOIS	FED. AID PROJECT	M-80036611