

F.A.U. R.T.E.	SECTION	COUNTY	TOTAL SHEETS	SHEET NO.
1370	11-00088-00-SW	DUPAGE	38	1
FED. ROAD DIST. NO. 1 ILLINOIS		CONTRACT NO. 63639		

STATE OF ILLINOIS

DEPARTMENT OF TRANSPORTATION

DIVISION OF HIGHWAYS

PLANS FOR PROPOSED FEDERAL AID HIGHWAY

FAU ROUTE 1370 (JEFFERSON STREET)  
YORK ROAD TO EVERGREEN STREET

SIDEWALK

SECTION 11-00088-00-SW  
PROJECT CMM-9003 (860)

VILLAGE OF BENSENVILLE

DUPAGE COUNTY

C-91-026-12

INDEX OF SHEETS

- 1 COVER SHEET
- 2 GENERAL NOTES
- 3-4 TYPICAL SECTIONS
- 5 SUMMARY OF QUANTITIES
- 6-7 ALIGNMENT, TIES AND BENCHMARKS
- 8-19 PLAN AND PROFILE SHEETS
- 20 TRAFFIC CONTROL AND PROTECTION FOR SIDE ROADS, INTERSECTIONS AND DRIVEWAYS (TC-10)
- 21 DISTRICT ONE PAVEMENT MARKINGS (TC-13)
- 22-38 CROSS SECTIONS

STATE STANDARDS

- 000001-06 STANDARD SYMBOLS, ABBREVIATIONS AND PATTERNS
- 424001-05 CURB RAMPS FOR SIDEWALKS
- 442201-03 CLASS C AND D PATCHES
- 606001-04 CONCRETE CURB TYPE B AND COMBINATION CONCRETE CURB AND GUTTER
- 701301-04 LANE CLOSURE, 2L, 2W, SHORT TIME OPERATIONS
- 701501-06 URBAN LANE CLOSURE, 2L, 2W, UNDIVIDED
- 701801-04 LANE CLOSURE MULTILANE 1W OR 2W CROSSWALK OR SIDEWALK CLOSURE
- 701901-01 TRAFFIC CONTROL DEVICES
- 720006-02 SIGN PANEL ERECTION DETAILS
- 720011-01 METAL POSTS FOR SIGNS, MARKERS AND DELINEATORS

DESIGN DESIGNATION=COLLECTOR URBAN  
TRAFFIC ADT VOLUME=6,600 VPD  
DESIGN SPEED=25 MPH

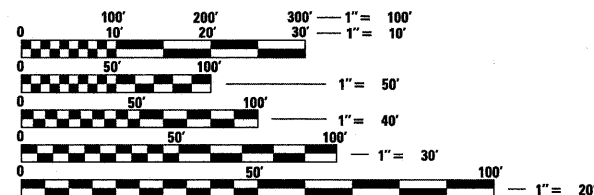
JEFFERSON SIDEWALK  
PROJECT BEGINS  
STA. 10 + 00.00

JEFFERSON SIDEWALK  
PROJECT ENDS  
STA. 44 + 94.35



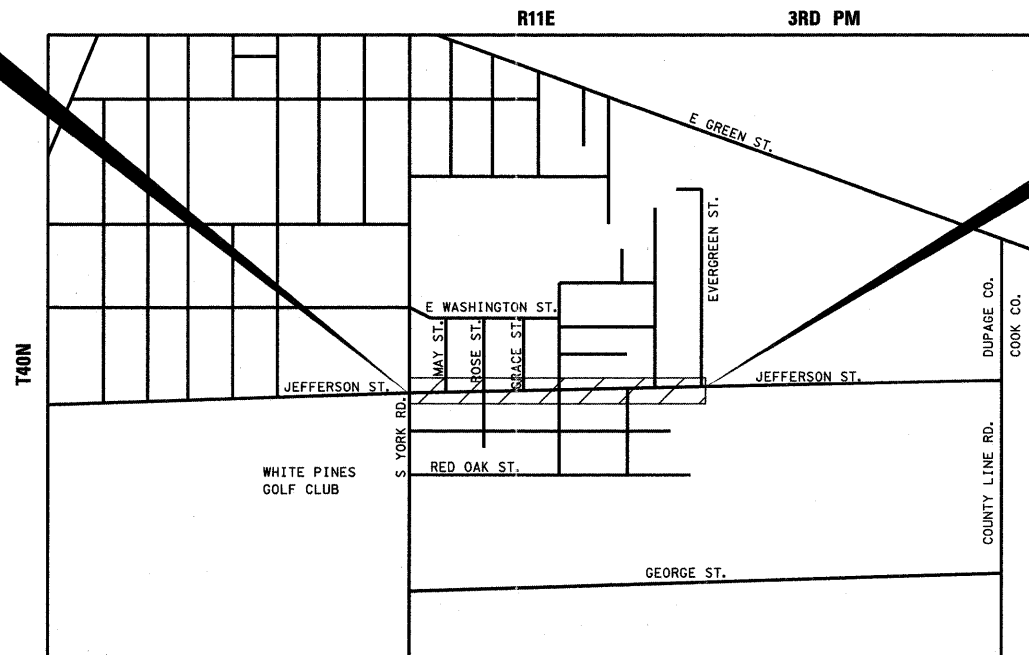
LOCATION OF SECTION INDICATED THIS: -

PROJECT LOCATED IN THE VILLAGE OF BENSENVILLE



FULL SIZE PLANS HAVE BEEN PREPARED USING STANDARD ENGINEERING SCALES. REDUCED SIZED PLANS WILL NOT CONFORM TO STANDARD SCALES. IN MAKING MEASUREMENTS ON REDUCED PLANS, THE ABOVE SCALES MAY BE USED.

J.U.L.I.E.  
JOINT UTILITY LOCATION INFORMATION FOR EXCAVATION  
1-800-892-0123  
OR 811



LOCATION MAP

NOT TO SCALE  
GROSS LENGTH OF PROJECT = 3,494.35 FT = 0.662 MILES  
NET LENGTH OF PROJECT = 3,494.35 FT = 0.662 MILES



STATE OF ILLINOIS  
DEPARTMENT OF TRANSPORTATION  
DIVISION OF HIGHWAYS

APPROVED 8-29 2011  
*Joseph M. Carasin*  
VILLAGE OF BENSENVILLE

PASSED 9-7-11 2011  
*Christy Chen*  
DISTRICT ONE ENGINEER OF LOCAL ROADS & STREETS

RELEASING FOR BID  
BASED ON LIMITED  
REVIEW SEPTEMBER 7, 2011  
*Diana M. O'Keefe*  
DEPUTY DIRECTOR OF HIGHWAYS, REGION ONE ENGINEER

PRINTED BY THE AUTHORITY OF THE STATE OF ILLINOIS

PROGRAM AND OFFICE ENGINEER: CHARLES F. RIDDLE, P.E. 847-705-4406 SCHAMBURG, IL

CONSULTING ENGINEERS, SCIENTISTS & LAND SURVEYORS

**B** Bollinger, Lach & Associates, Inc.  
333 PIERCE ROAD SUITE 200 ITASCA, IL 60143  
P(630) 438 6400 F(630) 438 6444 www.bollingerlach.com

ITASCA • CHICAGO • LAKE GENEVA • SOUTH BEND • INDIANAPOLIS

*Craig A. Lukowicz*  
CRAIG A. LUKOWICZ  
ILLINOIS REGISTERED PROFESSIONAL ENGINEER NO. 062-041788  
MY LICENSE EXPIRES ON 11-30-11.  
BOLLINGER, LACH & ASSOCIATES, INC.

DATE 8/29/11

CONTRACT NO. 63639