

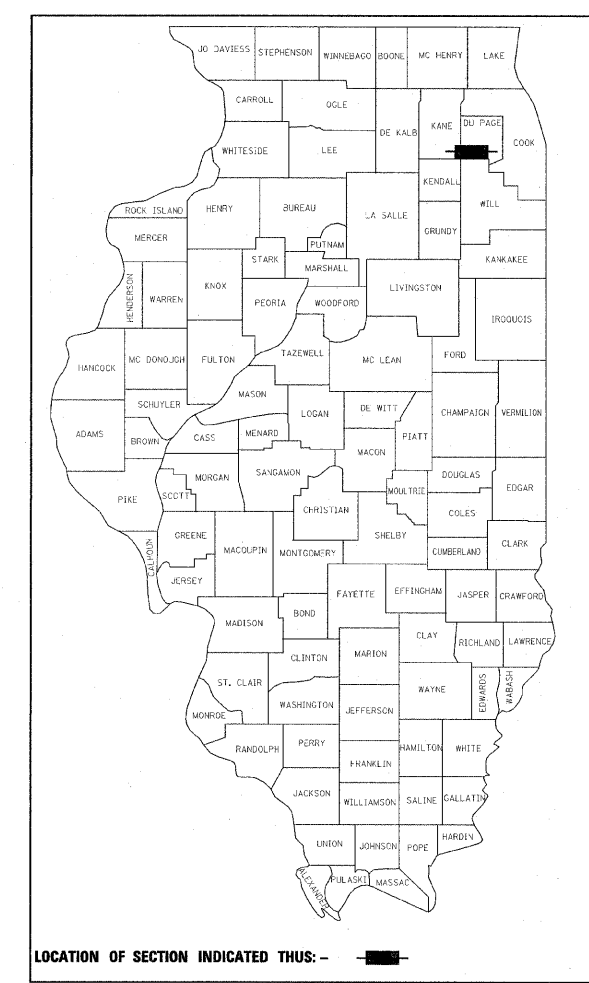
F.A.U. RTE.	SECTION	COUNTY	TOTAL SHEETS	SHEET NO.
1485	11-00150-00-RS	DUPAGE	21	1

CONTRACT NO. 63641

INDEX OF SHEETS	SHEET NO.	DESCRIPTION
	1	TITLE
	2	GENERAL NOTES, STANDARDS
	3 - 3A	SUMMARY OF QUANTITIES
	4	TYPICAL SECTIONS
	5-6	PROPOSED ROADWAY PLANS
	7-8	PAVEMENT MARKING PLANS
	9-20	DISTRICT ONE DETAILS
	21	CITY OF NAPERVILLE VALVE VAULT DETAIL
	21A	PAVEMENT CORE MEASUREMENTS

STATE OF ILLINOIS
DEPARTMENT OF TRANSPORTATION
DIVISION OF HIGHWAYS
**PLANS FOR PROPOSED
FEDERAL AID HIGHWAY**

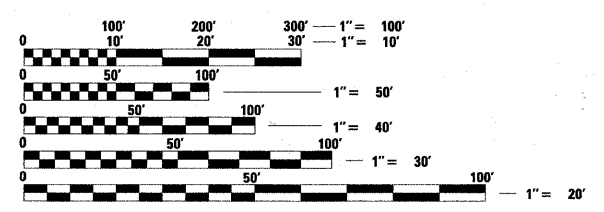
FAU ROUTE 1485 (DIEHL ROAD)
IL ROUTE 59 TO RAYMOND DRIVE
RESURFACING
SECTION 11-00150-00-RS
PROJECT NO. M-9003(832)
CITY OF NAPERVILLE
DUPAGE COUNTY
JOB NO: C-91-575-11



LOCATION OF SECTION INDICATED THUS: - ■ -

DESIGN DESIGNATION
25500 (32) MINOR ARTERIAL 4.3 (FD-20)
ADT (2030) ADT = 25,000

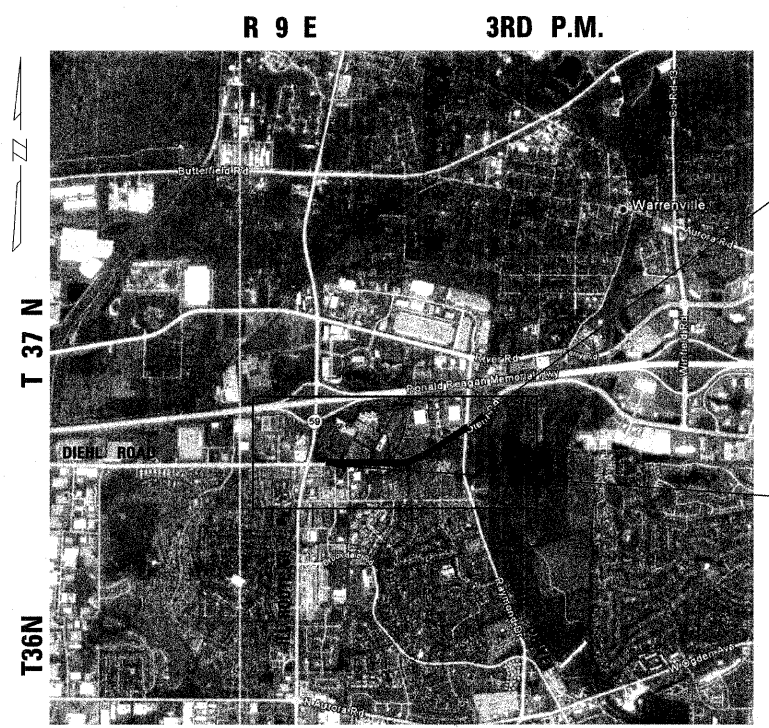
TRAFFIC DATA
ADT (2008) = 19,000
POSTED SPEED = 40 MPH



FULL SIZE PLANS HAVE BEEN PREPARED USING STANDARD ENGINEERING SCALES. REDUCED SIZED PLANS WILL NOT CONFORM TO STANDARD SCALES. IN MAKING MEASUREMENTS ON REDUCED PLANS, THE ABOVE SCALES MAY BE USED.

J.U.L.I.E.
JOINT UTILITY LOCATION INFORMATION FOR EXCAVATION
1-800-892-0123 OR 811

CONTRACT NO. 63641



LOCATION MAP
NOT TO SCALE

PROJECT ENDS
STATION 144 + 82.00

PROJECT BEGINS
STATION 113 + 63.91

GROSS AND NET LENGTH = 3,118.09 FT (0.59 MILES)



DATE: 10/18/11
Expires 11/30/11

**STATE OF ILLINOIS
DEPARTMENT OF TRANSPORTATION
DIVISION OF HIGHWAYS**

Approved October 12 20 11
William J. Powell
CITY OF NAPERVILLE, CITY ENGINEER

Passed November 1 20 11
Chad Christopher Hoer
DISTRICT 1 ENGINEER OF LOCAL ROADS AND STREETS

Releasing for Bid
Based on Limited Review NOVEMBER 2 20 11
Diane M. O'Keefe
DEPUTY DIRECTOR OF HIGHWAYS, REGION 1 ENGINEER

**PRINTED BY THE AUTHORITY
OF THE STATE OF ILLINOIS**

PLANS PREPARED BY:
URS 100 S. WACKER DR., SUITE 500 TEL (312)-939-1000
CHICAGO IL, 60606 FAX (312)-939-4198

PROGRAM AND OFFICE ENGINEER: CHARLES F. RIDDLE, P.E. 847-705-4406 SCHAUMBURG, IL