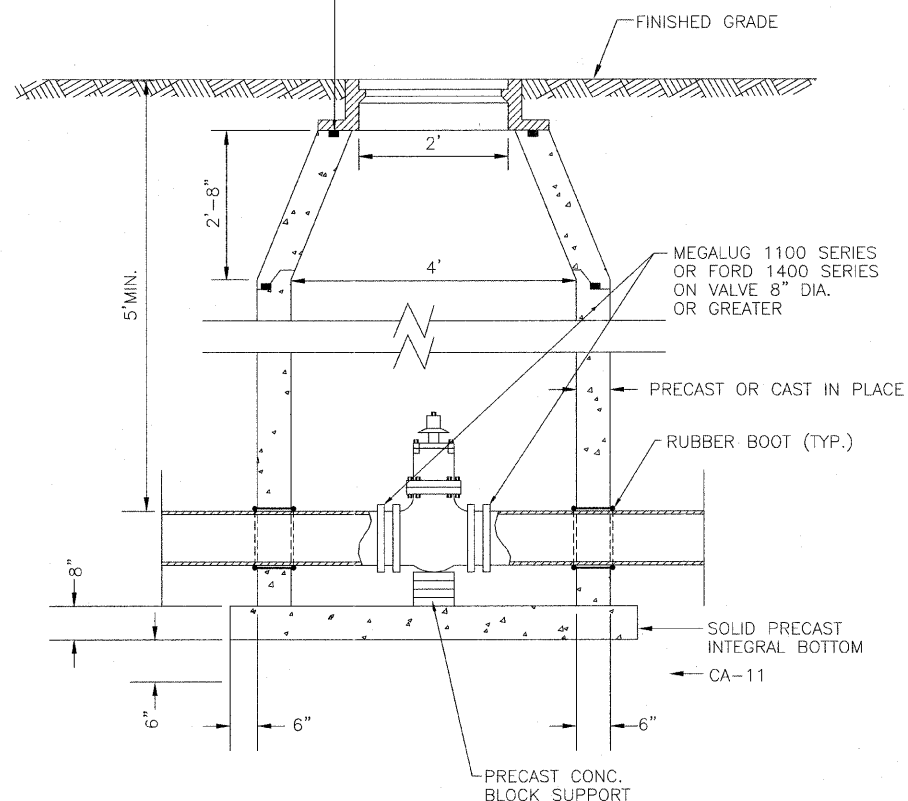


AT EACH JOINT, APPLY A CONTINUOUS LAYER OF NON-HARDENING PREFORMED BITUMINOUS MASTIC MATERIAL, CONSEAL CS-102B, OR APPROVED EQUAL



- 1) VALVE MUST ALIGN WITH THE CENTER OF VAULT OPENINGS.
- 2) CONES MUST BE CONCENTRIC WITH VALVES 12" AND SMALLER.
- 3) PRESSURE TAP VALVES REQUIRE ECCENTRIC CONES.
- 4) VALVES SHALL BE GATE VALVES MANUFACTURED BY CLOW, AMERICAN, WATEROUS, OR KENNEDY
- 5) WHEN ADJUSTMENTS ARE NECESSARY, THEY SHALL BE PERFORMED WITH A MAXIMUM OF TWO (2) PRECAST CONCRETE RINGS SET IN A BED OF PREFORMED NON-HARDENING MASTIC MATERIAL( CONSEAL CS-102B, OR APPROVED EQUAL) TO A MAXIMUM HEIGHT OF 12".

Title:		CITY OF NAPERVILLE STANDARD DETAIL	
Approved By:	DATE: 12/2005	REV:	Detail: WATER 4
	SCALE: NTS		

NOTE 5 IS ALSO APPLICABLE TO ALL DRAINAGE AND UTILITIES STRUCTURES TO BE ADJUSTED.

FILE NAME = #FILES#



USER NAME = #UGER#	DESIGNED - EVI	REVISED -
	DRAWN - KJB	REVISED -
PLOT SCALE = #SCALE#	CHECKED - DAK	REVISED -
PLOT DATE = #DATE#	DATE - 5/11/2011	REVISED -

**STATE OF ILLINOIS  
DEPARTMENT OF TRANSPORTATION**

<b>VALVE VAULT DETAIL</b>		
SCALE: 1" =	ft	SHEET NO. 1 OF 1 SHEETS
STA. —	TO STA. —	

F.A.U. RTE.	SECTION	COUNTY	TOTAL SHEETS	SHEET NO.
1485	11-00150-00-RS	DUPAGE	21	21
CONTRACT NO. 63641				
FED. ROAD DIST. NO. 1 [ILLINOIS] FED. AID PROJECT				