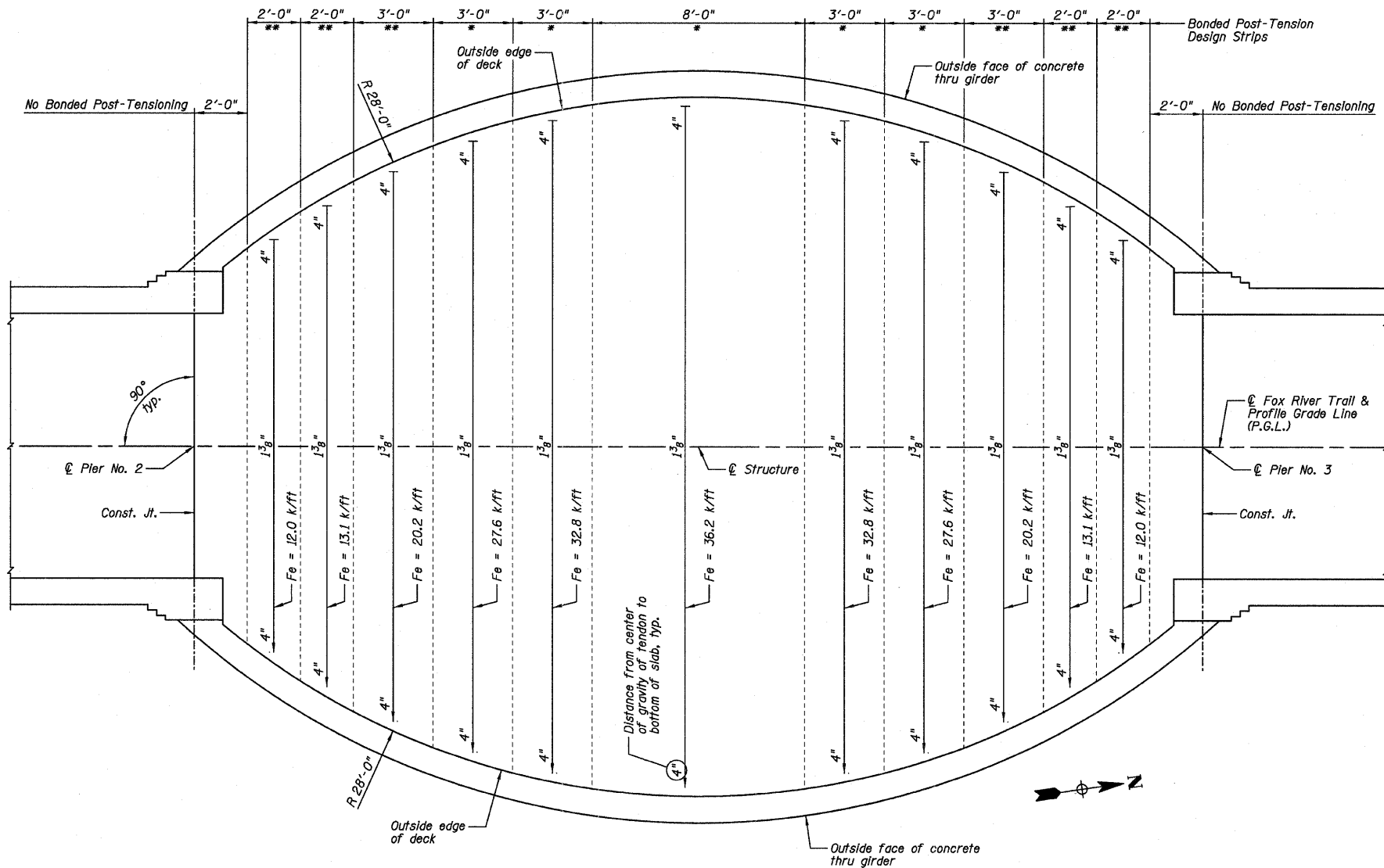


LEGEND

- Fixed-End Anchorage
- Stressing End Anchorage



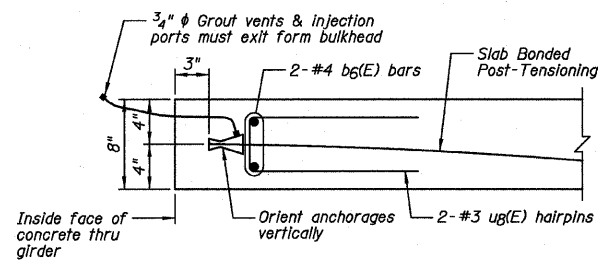
No. Tendons	No. #3 ug(E) hairpin bars
55	220

BILL OF MATERIAL

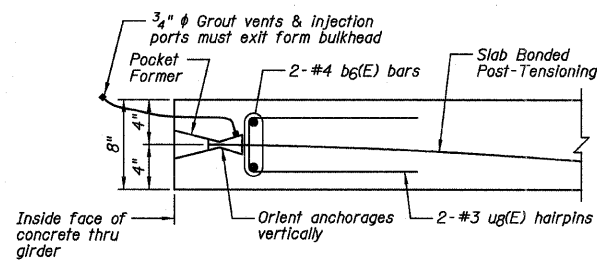
Item	Unit	Quantity
Post-Tensioning System	L. Sum	1

BONDED POST-TENSIONING PLAN

- * Two Bonded Post-Tensioning tendons per foot width.
- ** One Bonded Post-Tensioning tendon per foot width.



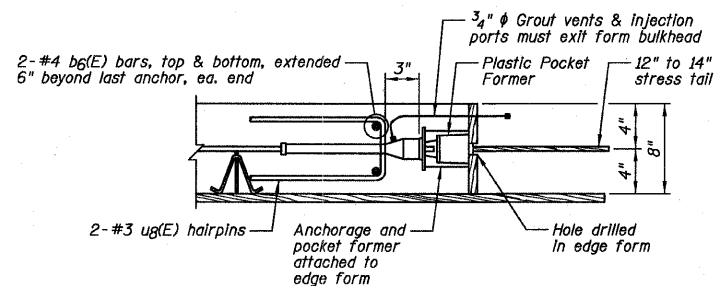
TYPICAL DEAD-END SLAB DETAIL



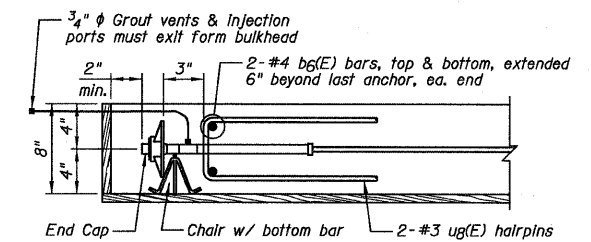
TYPICAL STRESSING END OF SLAB DETAIL

NOTE:

Cable to be burned off 1/2" behind face of concrete after stressing. Coat anchor with rust preventative mastic before dry packing or concreting.



STRESSING END ANCHORAGE



FIXED-END ANCHORAGE

NOTES:

- 1.) The nominal diameter of the Post-Tensioning tendon shall be 0.6" and the nominal cross-sectional area shall be 0.217 sq. in.
- 2.) Fe denotes Post-Tensioning force.
- 3.) A bonded tendon system shall be used.
- 4.) See Sheet B14 for Superstructure Details and Bill of Material.
- 5.) Bonded single strand at system shall be used and submitted by Contractor for approval.
- 6.) Strand (0.6" ϕ) shall be placed inside plastic duct prior to concrete placement.
- 7.) After Post-Tensioning tendons are stressed and grouted, cut strand tails as recommended by manufacturer, break grout vents & injection ports flush with surface, and clean pockets. Thru girder forming method should allow for tendon anchor pockets to fill with concrete.

Farnsworth
GROUP, INC.
2709 McGraw Drive
Bloomington, Illinois 61704
309/683-8435, 309/683-1571 fax

DESIGNED - JML/JCZ	REVISED - DJM 11/07/11
CHECKED - JML	REVISED
DRAWN - DJM	REVISED
DATE - 10/17/11	CHECKED - MSW

GENEVA PARK DISTRICT
GENEVA, ILLINOIS

SUPERSTRUCTURE DECK
ISLAND PARK NORTH BRIDGE

SHEET NO. B7 OF 31 SHEETS

F.A. RTE.	SECTION	COUNTY	TOTAL SHEETS	SHEET NO.
N/A	06-P4005-00-BR	KANE	42	16
CONTRACT NO. 63643			ILLINOIS FED. AID PROJECT	