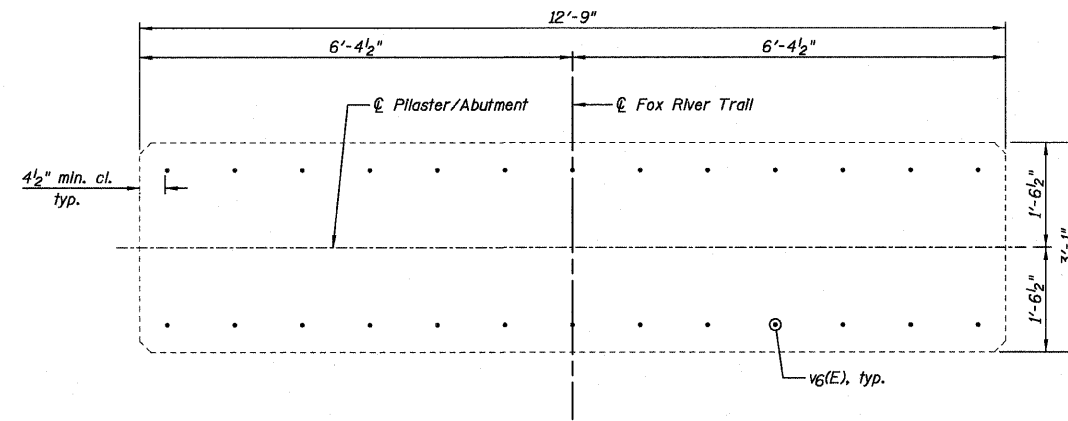
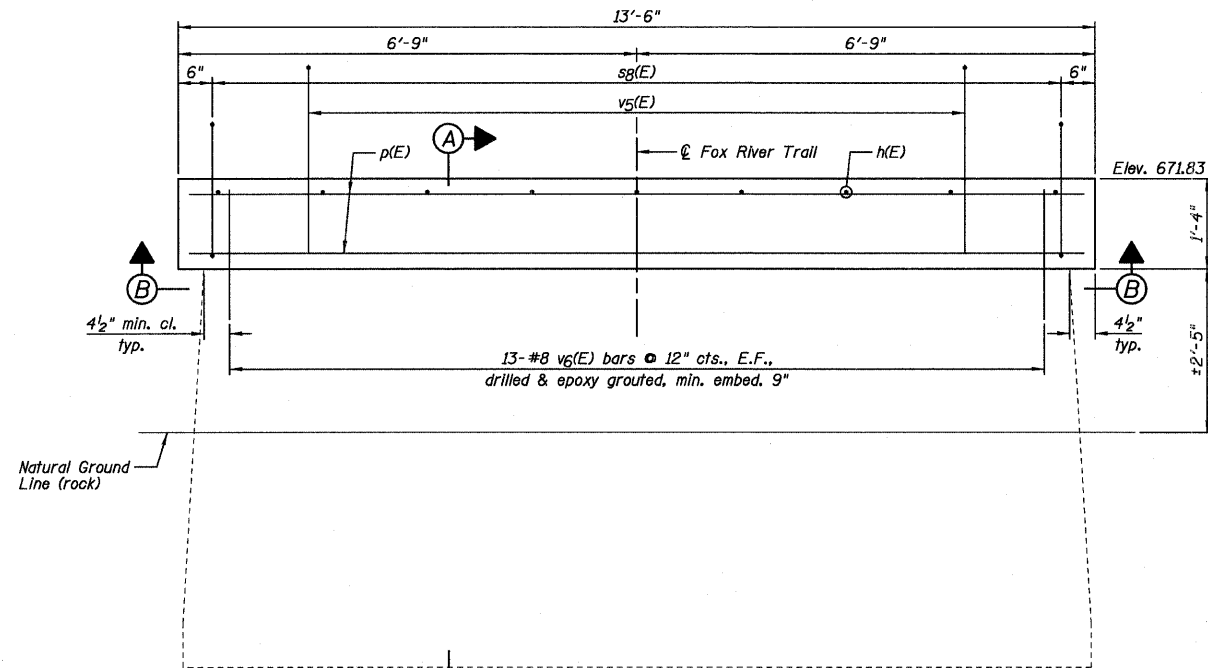


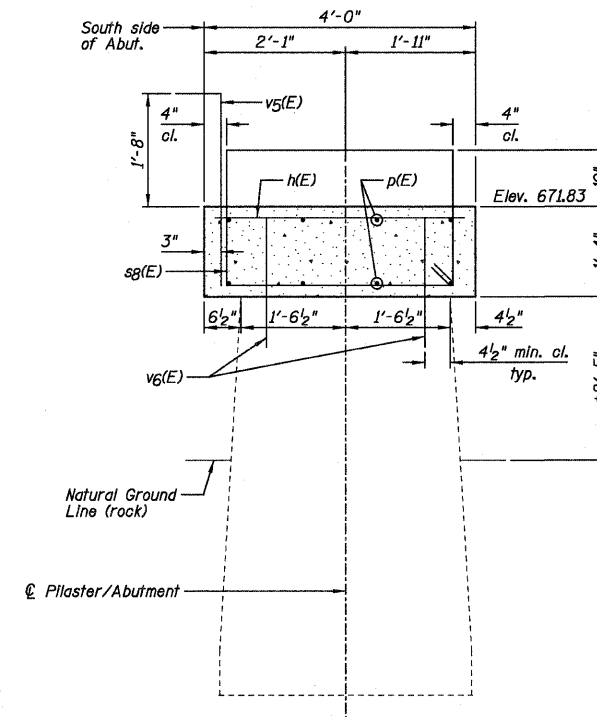
TOP PLAN VIEW



SECTION B-B



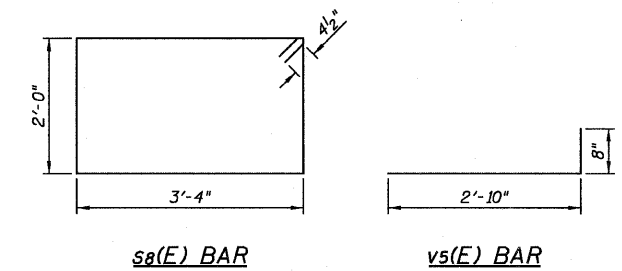
ELEVATION
(Looking South)



SECTION A-A

**SOUTH ABUTMENT
BILL OF MATERIAL**

Bar	No.	Size	Length	Shape
h(E)	9	#4	3'-8"	—
p(E)	8	#7	13'-2"	—
sg(E)	9	#4	11'-5"	□
v5(E)	11	#5	3'-6"	—
v6(E)	26	#8	1'-11"	—
Item	Unit	Quantity		
Structure Excavation	Cu. Yd.	13		
Concrete Structures	Cu. Yd.	2.7		
Reinforcement Bars, Epoxy Coated	Pound	480		
Geocomposite Wall Drain	Sq. Yd.	8		
Pipe Underdrains For Structures 4"	Foot	33		
Porous Granular Embankment, Special	Cu. Yd.	13		



sg(E) BAR

v6(E) BAR

NOTES:

- 1.) E.F. denotes Each Face.
- 2.) Drill & epoxy grout v6(E) bars in appropriate drilled holes according to Section 584 of the Standard Specifications. The type of epoxy grout shall be approved by the Engineer.

Farnsworth
GROUP, INC.
2709 McGraw Drive
Bloomington, Illinois 61704
309/663-8435, 309/663-1571 fax

DESIGNED - JML/JCZ	REVISED
CHECKED - JML	REVISED
DRAWN - DJM	REVISED
DATE - 10/17/11	REVISED
CHECKED - MSW	REVISED

**GENEVA PARK DISTRICT
GENEVA, ILLINOIS**

**SOUTH ABUTMENT REPLACEMENT
ISLAND PARK NORTH BRIDGE**

SHEET NO. B21 OF 31 SHEETS

F.A. RTE.	SECTION	COUNTY	TOTAL SHEETS	SHEET NO.
N/A	06-P4005-00-BR	KANE	42	30
CONTRACT NO. 63643			ILLINOIS FED. AID PROJECT	