

GENERAL NOTES

Fasteners shall be AASHTO M164 Type 1, mechanically galvanized bolts in painted areas and M164 Type 3 in unpainted areas. Bolts 7/8 in. φ, holes 15/16 in. φ, unless otherwise noted.

Calculated weight of Structural Steel = 45,380 lbs. (Grade 50W)

All structural steel shall be AASHTO M 270 Grade 50W. All structural steel shall be cleaned as specified in the Special Provision for "Surface Preparation and Painting Requirements for Weathering Steel".

No field welding is permitted except as specified in the contract documents.

Reinforcement bars shall conform to the requirements of ASTM A 706 Gr 60. See Special Provisions.

Reinforcement bars designated (E) shall be epoxy coated.

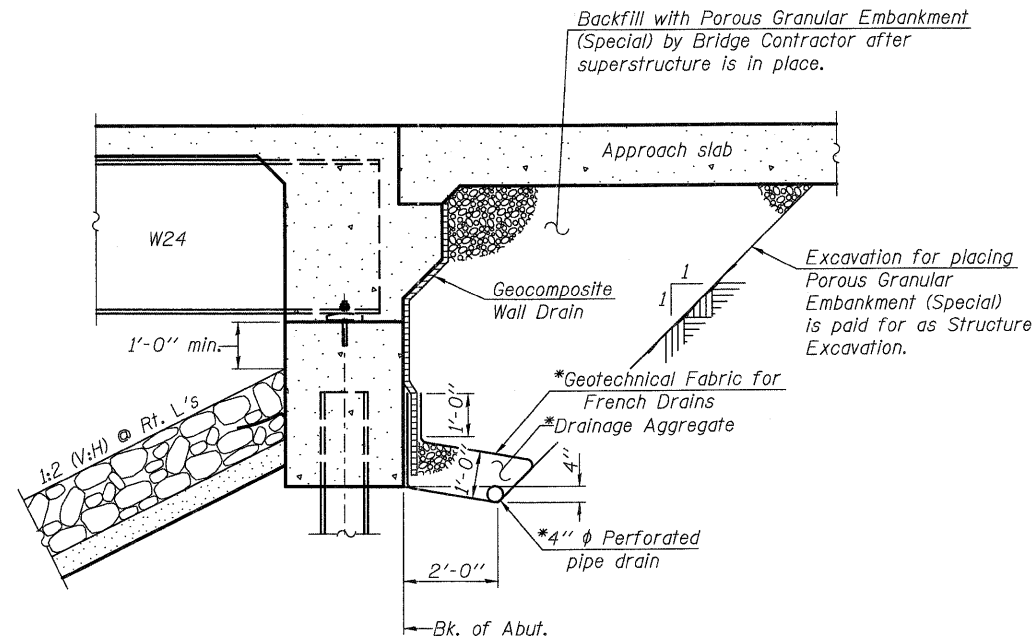
Structural steel shall only be painted for a distance equal to the depth of embedment into the concrete cap plus 3 inches. Painted areas shall be primed in the shop with a Department approved zinc rich primer. Field painting will not be required.

Layout of slope protection system may be varied to suit ground conditions in the field as directed by the Engineer.

The embankment configuration shown shall be the minimum that must be placed and compacted prior to construction of the abutments.

Existing bridge railing to be removed and salvaged. Contractor to deliver to location specified by the Engineer. Cost included in the pay item "Removal of Existing Structures".

Existing bituminous wearing surface to be removed. Cost included in the pay item "Removal of Existing Structures".



SECTION THRU INTEGRAL ABUTMENT

(Horiz. dim. @ Rt. L's)

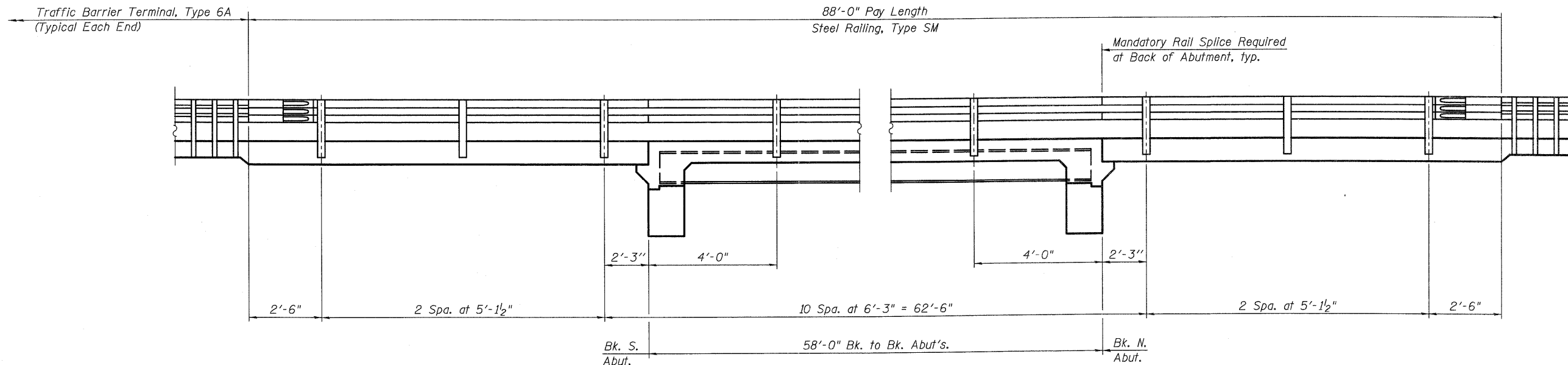
*Included in the cost of Pipe Underdrains for Structures.

Note:

All drainage system components shall extend to 2'-0" from the end of each wingwall except an outlet pipe shall extend until intersecting with the side slopes. The pipes shall drain into concrete headwalls. (See Article 601.05 of the Standard Specifications and Highway Standard 601101).

TOTAL BILL OF MATERIAL

ITEM	UNIT	SUPER	SUB	TOTAL
Stone Riprap, Class A4	Sq. Yd.		330	330
Filter Fabric	Sq. Yd.		330	330
Removal of Existing Structures	Each		1	1
Structure Excavation	Cu. Yd.		196	196
Concrete Structures	Cu. Yd.		47.7	47.7
Concrete Superstructure	Cu. Yd.	164.8		164.8
Bridge Deck Grooving	Sq. Yd.	419		419
Concrete Encasement	Cu. Yd.		3.6	3.6
Protective Coat	Sq. Yd.	439		439
Furnishing and Erecting Structural Steel	L. Sum	1		1
Stud Shear Connectors	Each	1,020		1,020
Reinforcement Bars, Epoxy Coated	Pound	41,010	4,140	45,150
Bar Splicers	Each	66		66
Steel Railing, Type SM	Foot	176		176
Furnishing Steel Piles HP12x53	Foot		190	190
Name Plates	Each		1	1
Anchor Bolt 1"	Each		20	20
Geocomposite Wall Drain	Sq. Yd.		45	45
Porous Granular Embankment (Special)	Cu. Yd.		89	89
Temporary Sheet Piling	Sq. Ft.		1,474	1,474
Pipe Underdrains for Structures, 4"	Foot		124	124
Setting Piles in Rock	Each		10	10



RAIL POST SPACING

FILE NAME = W:\Projects\2018\120825 Burr-Ferguson\Road\Structural\Ugn\465986-02-GenData.dgn

WILLS BURKE KELSEY ASSOCIATES LTD.
116 West Main Street, Suite 201
St. Charles, Illinois 60174

USER NAME = nparr18	DESIGNED - HLF	REVISED -
PLOT SCALE =	CHECKED - AEU	REVISED -
PLOT DATE = 11/17/2011	DRAWN - HLF	REVISED -
	CHECKED - AEU	REVISED -

**STATE OF ILLINOIS
DEPARTMENT OF TRANSPORTATION**

**GENERAL DATA
STRUCTURE NO. 045-3080**

SHEET NO. 2 OF 20 SHEETS

T.R. RTE.	SECTION	COUNTY	TOTAL SHEETS	SHEET NO.
0194	08-14117-00-BR	KANE	76	35
FED. ROAD DIST. NO.			ILLINOIS FED. AID PROJECT	
			CONTRACT NO. 63645	