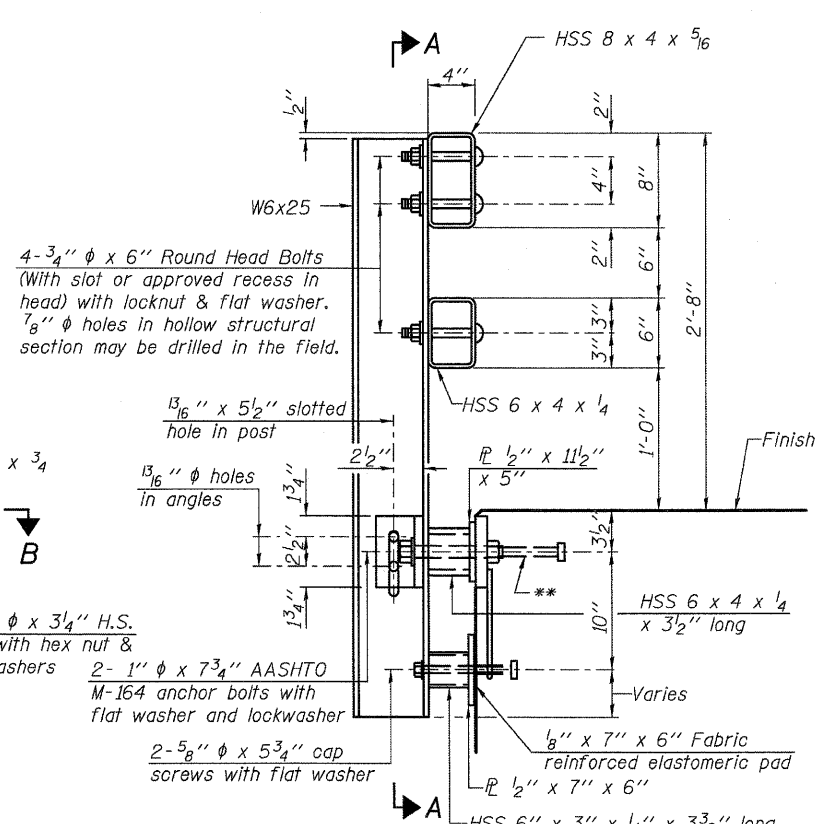
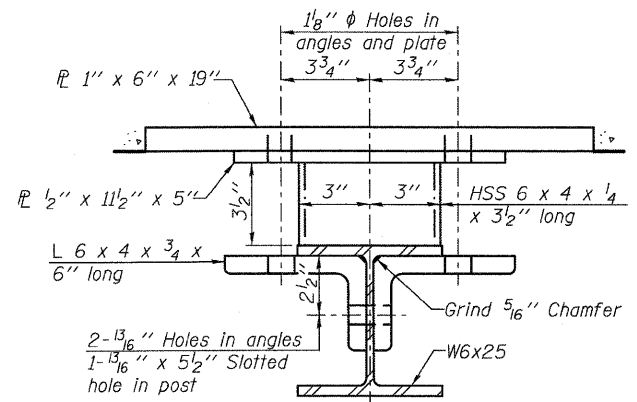


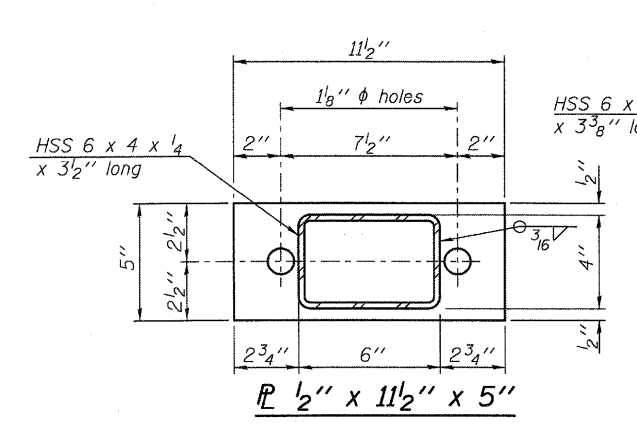
SECTION A-A



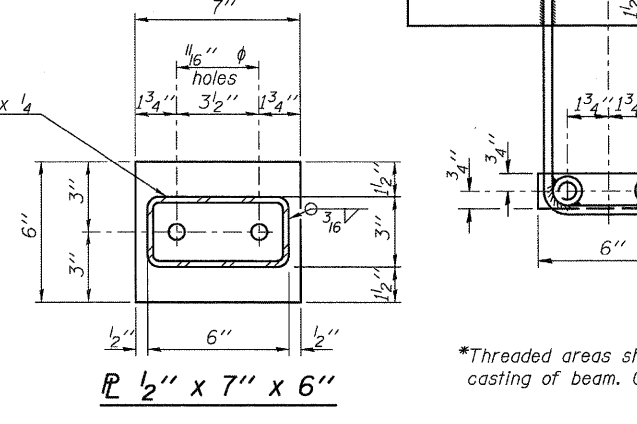
SECTION AT RAIL POST



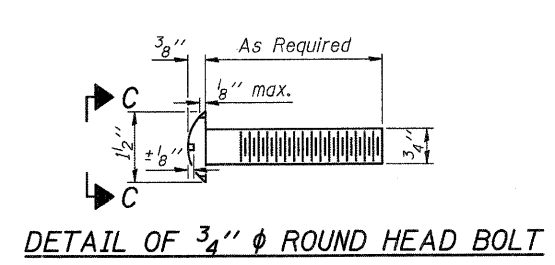
SECTION B-B



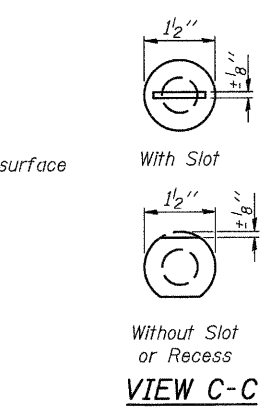
SECTION C-C



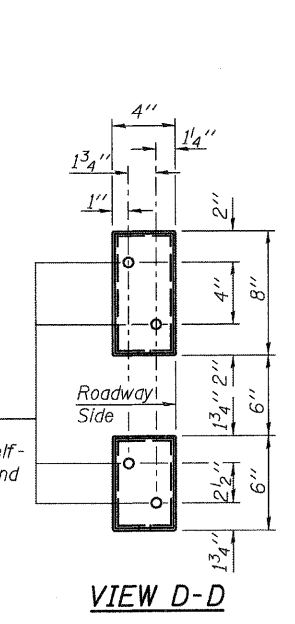
SECTION D-D



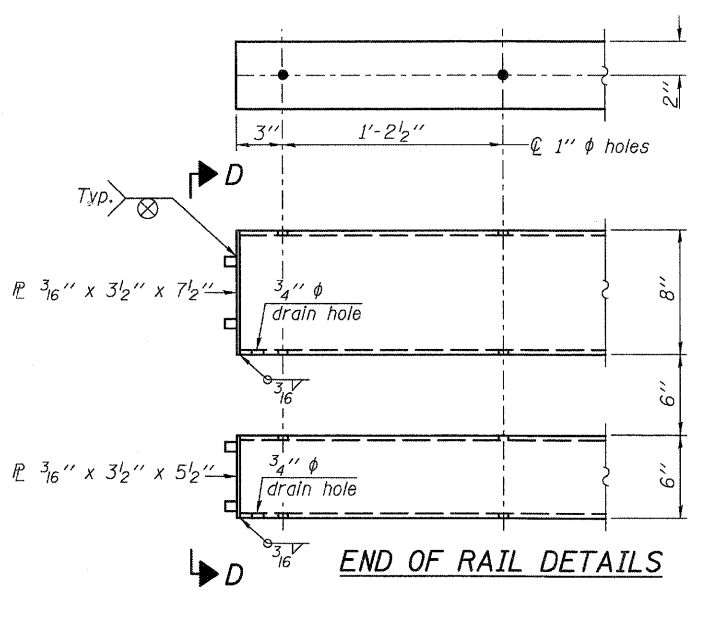
DETAIL OF 3/4"  $\phi$  ROUND HEAD BOLT



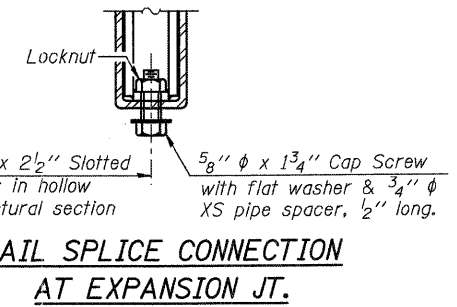
VIEW C-C



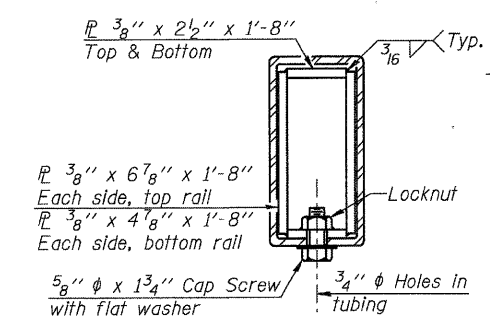
VIEW D-D



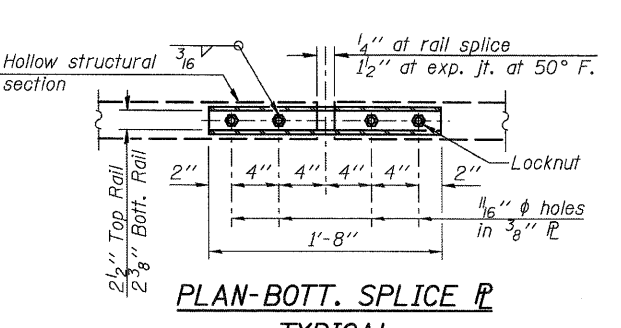
END OF RAIL DETAILS



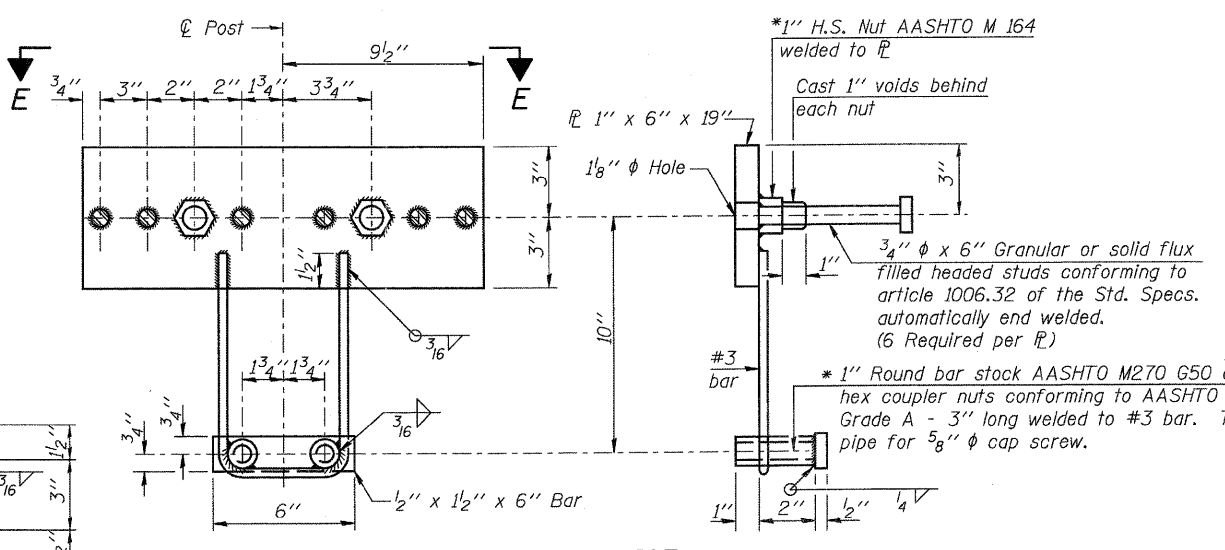
RAIL SPLICE CONNECTION AT EXPANSION JT.



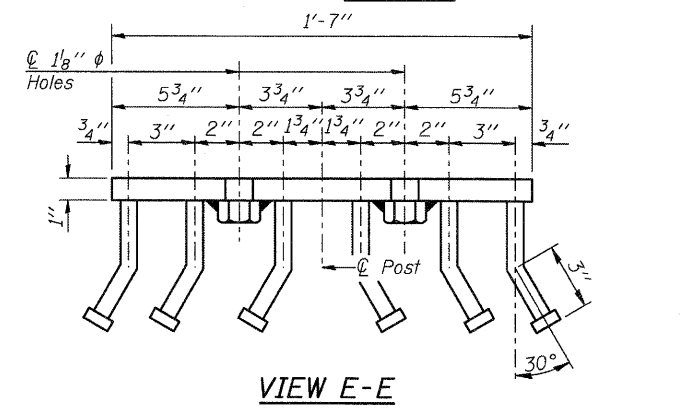
SECTION AT RAIL SPLICE



PLAN-BOTT. SPLICE TYPICAL



ANCHOR DEVICE



VIEW E-E

Notes:  
 All field drilled holes shall be coated with an approved zinc rich paint before erection.  
 For multi-span bridges, sufficient 1/4" x 6" x 1'-2" galvanized steel shims shall be provided to align rail between adjacent spans. Cost included with Steel Railing, Type SM.  
 Steel rail elements shall be galvanized according to Article 509.05 of the Standard Specifications.  
 \*\* The studs of the anchor devices shall be placed below the top reinforcement bars and the outermost longitudinal reinforcement bar shall be placed directly above the studs of the rail post anchor device.  
 See Sheet 2 of 20 for Post Spacing.

\*Threaded areas shall be plugged or blocked off during casting of beam. Galvanized after fabrication.

BILL OF MATERIAL

Item	Unit	Quantity
Steel Railing, Type SM	Foot	176

FILE NAME = W:\Projects\2010\100025 BurrFerson\I\Noe\Struct\Rail\Rail.dgn

WILLS BURKE KELSEY ASSOCIATES LTD.  
 116 West Main Street, Suite 201  
 St. Charles, Illinois 60174

USER NAME	DESIGNED	REVISIONS
nperris	HLF	
	AEU	
	HLF	
	AEU	

STATE OF ILLINOIS  
 DEPARTMENT OF TRANSPORTATION

STEEL RAILING, TYPE SM  
 STRUCTURE NO. 045-3080  
 SHEET NO. 12 OF 20 SHEETS

T.R. RTE.	SECTION	COUNTY	TOTAL SHEETS	SHEET NO.
0194	08-14117-00-BR	KANE	76	45
CONTRACT NO. 63645				
FED. ROAD DIST. NO. ILLINOIS FED. AID PROJECT				