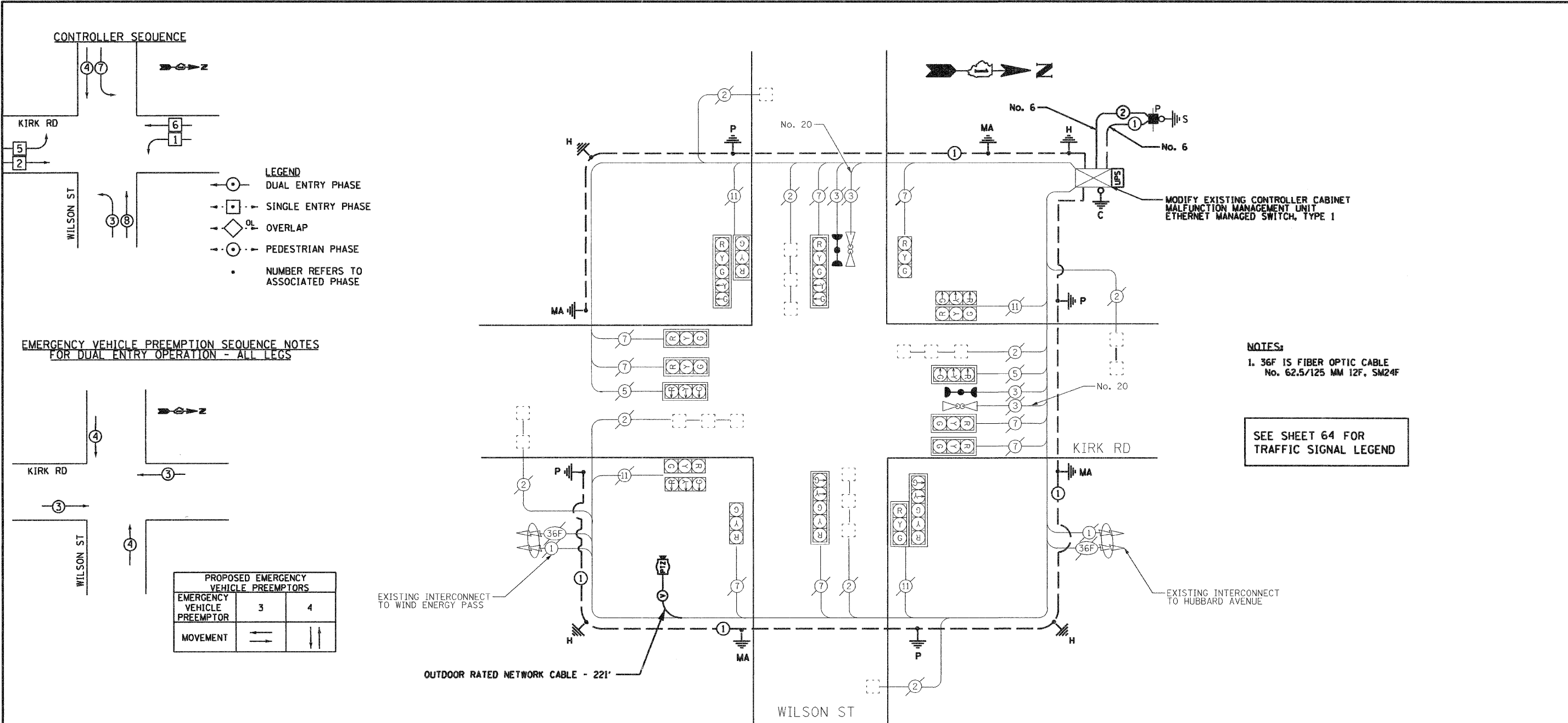
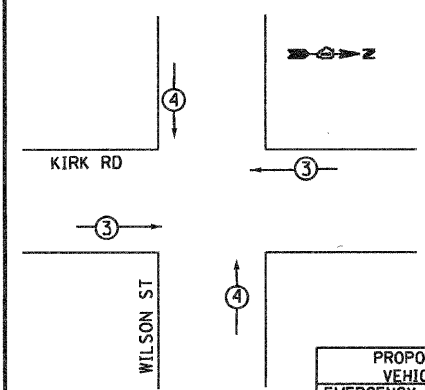


11/7/2011

P:\2011\9667200\700 CAD & GIS Files\702 Civil\Sheet\3b.Cable.Kirk and Wilson.P2.dgn



**EMERGENCY VEHICLE PREEMPTION SEQUENCE NOTES FOR DUAL ENTRY OPERATION - ALL LEGS**



PROPOSED EMERGENCY VEHICLE PREEMPTORS		
EMERGENCY VEHICLE PREEMPTOR	3	4
MOVEMENT	← →	↑ ↓

**NOTES:**  
 1. 36F IS FIBER OPTIC CABLE No. 62.5/125 MM 12F, SM24F  
 SEE SHEET 64 FOR TRAFFIC SIGNAL LEGEND

**SCHEDULE OF QUANTITIES - KIRK RD. AND WILSON ST.**

PAY ITEM	UNIT	QUANTITY
EARTH EXCAVATION	CU YD	2
PORTLAND CEMENT CONCRETE SIDEWALK 5 INCH	SQ FT	23.2
MAINTENANCE OF EXISTING TRAFFIC SIGNAL INSTALLATION	EACH	1
ELECTRIC CABLE IN CONDUIT, SERVICE, NO. 6 2C	FOOT	82
REMOVE EXISTING TRAFFIC SIGNAL EQUIPMENT	EACH	1
SERVICE INSTALLATION-POLE MOUNTED	EACH	1
GROUNDING EXISTING HANDHOLE-FRAME AND COVER	EACH	4
UNINTERRUPTABLE POWER SUPPLY, STANDARD	EACH	1
ELECTRIC CABLE IN CONDUIT, EQUIPMENT GROUNDING CONDUCTOR, NO. 6 1C	FOOT	352
MALFUNCTION MANAGEMENT UNIT	EACH	1
ETHERNET MANAGED SWITCH, TYPE 1	EACH	1
RE-OPTIMIZE TRAFFIC SIGNAL SYSTEM, LEVEL 2	EACH	1
CONFIRMATION BEACON	EACH	4
OUTDOOR RATED NETWORK CABLE	FOOT	221
INTERSECTION VIDEO TRAFFIC MONITORING SYSTEM WITH PTZ CAMERA	EACH	1
MODIFY EXISTING CONTROLLER CABINET	EACH	1

I.D.O.T. TRAFFIC SIGNAL INSTALLATION ELECTRICAL SERVICE REQUIREMENTS					TOTAL WATTAGE
TYPE	NO. OF LAMPS	x WATTAGE INCAND.	x % OPERATION	LED	
SIGNAL (RED)	10	17	0.50		85
(YELLOW)	10	25	0.25		62.5
(GREEN)	10	15	0.25		62.5
ARROW	10	12	0.10		12
PED. SIGNAL	2	25	1.0		50
CONTROLLER	0	100	1.0		0
ILLUM. SIGN	0	25	1.0		0
FLASHER	0				0
TOTAL =					272

ENERGY COST TO : KANE COUNTY DIVISION OF TRANSPORTATION  
 41 W011 BURLINGTON ROAD  
 ST. CHARLES, ILLINOIS 60175

ENERGY SUPPLY CONTACT: JENNIFER MILKEMAN  
 PHONE: (630) 232-1503  
 COMPANY: CITY OF GENEVA

FOUNDATION (DEPTH)	(FT.)	CABLE SLACK	(FT.)	VERTICAL	(FT.)
TYPE A - POST	4	HANDHOLE	6.5	ALL FOUNDATIONS	3.5
C - CONTROLLER W/UPS	4	DOUBLE HANDHOLE	13	MAST ARM (L) POLE	20'H-2'
D - CONTROLLER	4	SIGNAL POST	2	BRACKET MOUNTED	13
E - MAST ARM POLE		CONTROLLER CAB.	1	PED. PUSHBUTTON	6
30"	15	FIBER OPTIC	13	ELECTRIC SERVICE	13.5
36"	15	ELECTRIC SERVICE	1	SERVICE TO GROUND	13.5
42"	25	GROUND CABLE	1	POST MOUNTED	6

<b>JACOBS</b> ONE NORTH FRANKLIN CHICAGO IL, 60606 312-251-3000	USER NAME =	DESIGNED - CH	REVISED -	<b>KANE COUNTY          DIVISION OF TRANSPORTATION</b>	<b>CABLE PLAN, PHASE DESIGNATION DIAGRAM          AND SCHEDULE OF QUANTITIES          KIRK ROAD AND WILSON STREET</b>		F.A.P. RTE. 360	SECTION 10-00403-00-TL	COUNTY KANE	TOTAL SHEETS 72	SHEET NO. 10
	PLOT SCALE =	DRAWN - MO, DI	REVISED -		SCALE:	SHEET NO. OF SHEETS STA. TO STA.	FED. ROAD DIST. NO. (ILLINOIS) FED. AID PROJECT		CONTRACT NO. 63648		
	PLOT DATE = 11/7/2011	CHECKED - KG	REVISED -		DATE - #DATE	REVISED -					