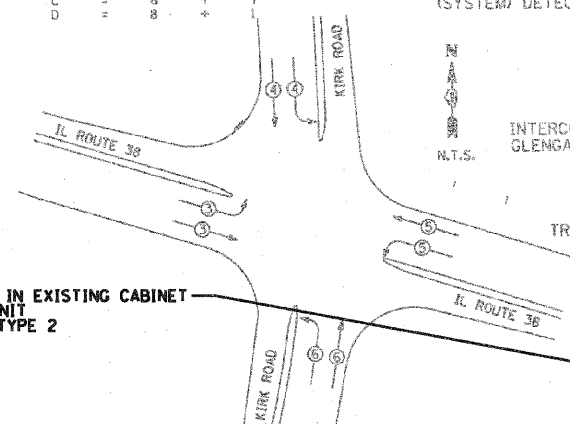
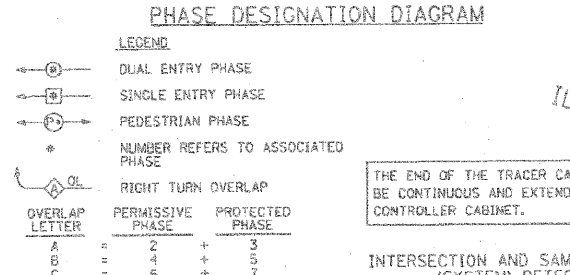


NOTE:
PUSHBUTTON "B" SHALL PLACE A CALL IN PHASES 4 AND 6



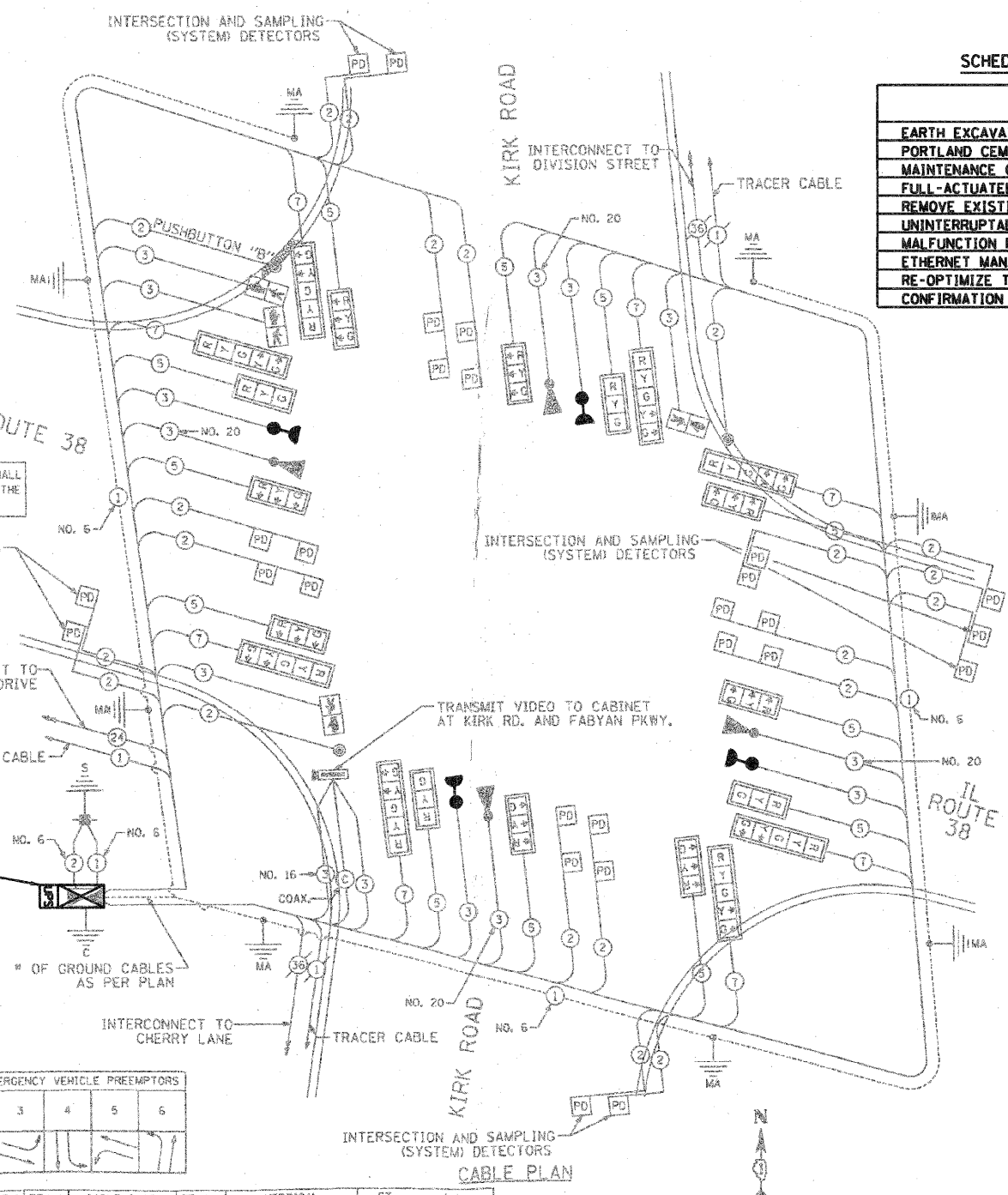
FULL-ACTUATED CONTROLLER IN EXISTING CABINET
MALFUNCTION MANAGEMENT UNIT
ETHERNET MANAGED SWITCH TYPE 2

I.D.O.T. TRAFFIC SIGNAL INSTALLATION ELECTRICAL SERVICE REQUIREMENTS					TOTAL WATTAGE
TYPE	NO. OF LAMPS	WATTAGE	OPERATION		
SIGNAL (RED)	20	135	17	0.50	170.0
(YELLOW)	20	135	25	0.25	125.0
(GREEN)	20	135	15	0.25	75.0
ARROW	16	135	12	0.10	19.2
PED. SIGNAL	4	90	25	1.00	100.0
CONTROLLER	1	100	100	1.00	100.0
ILLUM. SIGN	0	84	35	0.05	0
FLASHER	0		25	0.50	0
ENERGY COST TO:				TOTAL =	589.2

ILLINOIS DEPARTMENT OF TRANSPORTATION
DIVISION OF HIGHWAYS/DISTRICT 1
201 WEST CENTER COURT/SCHAUMBURG, ILLINOIS 60196-1096
ENERGY SUPPLY: CONTACT: JENNIFER HILKEMANN
PHONE: (630) 232-1503
COMPANY: CITY OF GENEVA

PROPOSED EMERGENCY VEHICLE PREEMPTORS				
EMERGENCY VEHICLE PREEMPTORS	3	4	5	6
MOVEMENT				

FOUNDATION (DEPTH)	FT (m)	CABLE SLACK	FT (m)	VERTICAL	FT. (m)
TYPE A - POST	4 (1.2)	HANDHOLE	6.5 (2.0)	ALL FOUNDATIONS	3.5 (1.0)
TYPE B - CONTROLLER	4 (1.2)	DOUBLE HANDHOLE	13 (4.0)	WAST ARM 1.7 POLE	20' H - 2" (5m) H - 0.6m
30", TYPE E	15 (4.6)	SIGNAL POST	2 (1.0)	BRACKET MOUNTED	15 (4.6)
36", TYPE E	15 (4.6)	CONTROLLER CAB.	1 (0.5)	RED. PUSHBUTTON	4 (1.2)
		FIBER OPTIC	13 (4.0)	ELECTRIC SERVICE	13.5 (4.1)
		ELECTRIC SERVICE	1 (0.5)	SERVICE TO GROUND	13.5 (4.1)
		GROUND CABLE	1 (0.5)	POST MOUNTED	5 (1.5)



SCHEDULE OF QUANTITIES - KIRK ROAD AND IL RTE 38 (E STATE STREET)

PAY ITEM	UNIT	QUANTITY
EARTH EXCAVATION	CY YD	2
PORTLAND CEMENT CONCRETE SIDEWALK 5 INCH	SO FT	23.2
MAINTENANCE OF EXISTING TRAFFIC SIGNAL CONTROLLER	EACH	1
FULL-ACTUATED CONTROLLER IN EXISTING CABINET	EACH	1
REMOVE EXISTING TRAFFIC SIGNAL EQUIPMENT	EACH	1
UNINTERRUPTABLE POWER SUPPLY, STANDARD	EACH	1
MALFUNCTION MANAGEMENT UNIT	EACH	1
ETHERNET MANAGED SWITCH, TYPE 2	EACH	1
RE-OPTIMIZE TRAFFIC SIGNAL SYSTEM, LEVEL 2	EACH	1
CONFIRMATION BEACON	EACH	4

NOTES:
1. NEW ELEMENTS SHOWN IN BOLD, EXISTING ELEMENTS INCLUDED FOR REFERENCE ONLY (GREY SCALE)

SEE SHEET 64 FOR TRAFFIC SIGNAL LEGEND

NOTE:
THE TRAFFIC SIGNAL CONTROL EC SHALL BE "EAGLE" TO MATCH TH