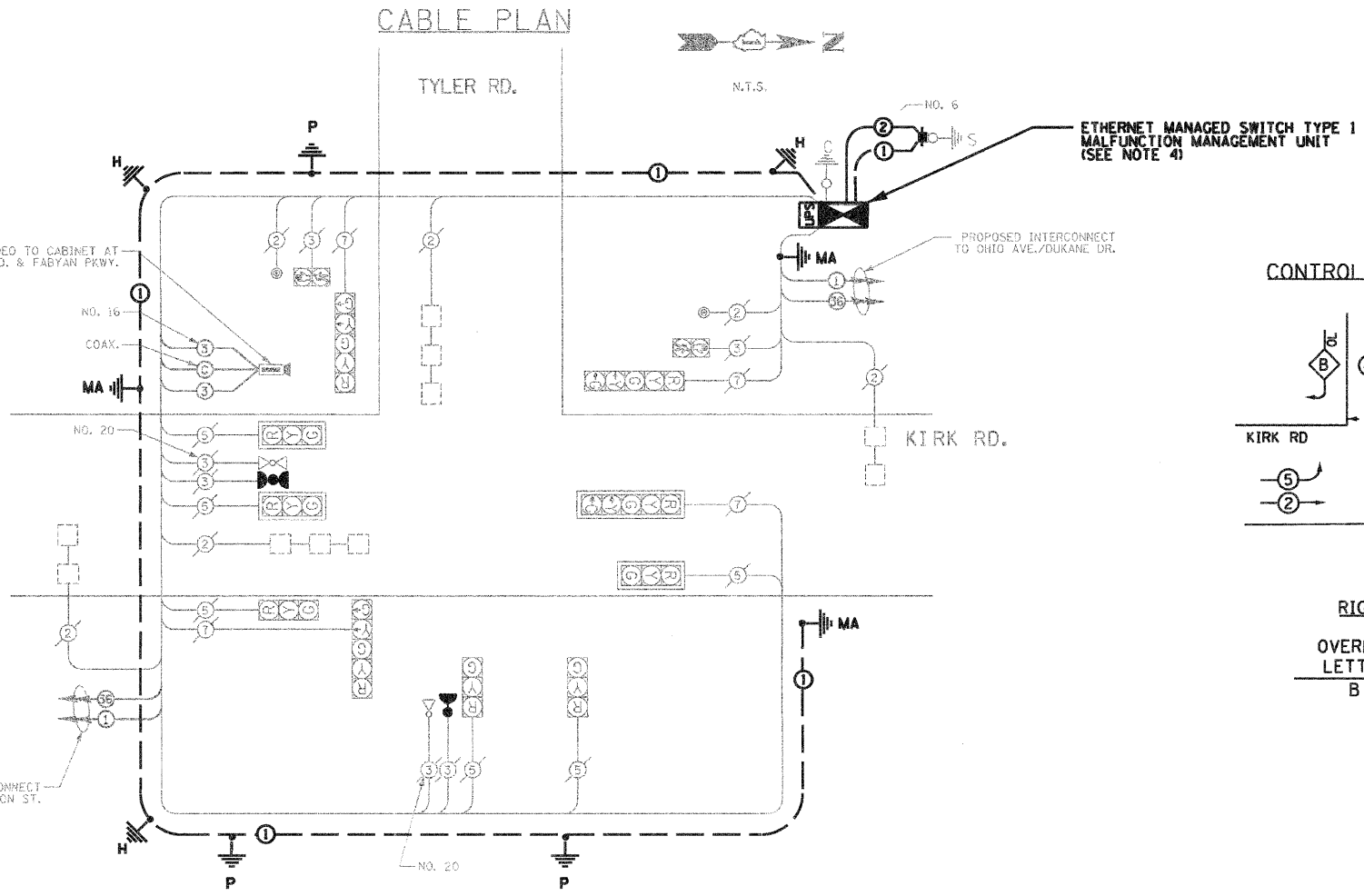
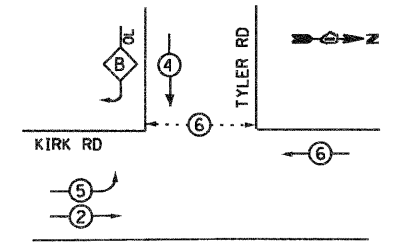


NOTES:

1. NEW ELEMENTS SHOWN IN BOLD, EXISTING ELEMENTS INCLUDED FOR REFERENCE ONLY (GREY SCALE)
2. 36F IS FIBER OPTIC CABLE No. 62.5/125 MM 12F, SM24F
3. ELECTRICAL SERVICE METER WILL NEED TO BE RELOCATED BY OTHERS
4. MALFUNCTION MANAGEMENT UNIT TO BE PAID FOR UNDER FULL-ACTUATED CONTROLLER AND TYPE IV CABINET



CONTROLLER SEQUENCE



- LEGEND**
- DUAL ENTRY PHASE
 - SINGLE ENTRY PHASE
 - OVERLAP
 - PEDESTRIAN PHASE
 - NUMBER REFERS TO ASSOCIATED PHASE

RIGHT TURN OVERLAP PHASE DIAGRAM

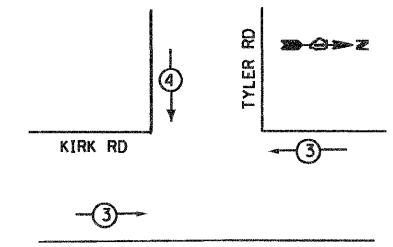
OVERLAP LETTER	PERMISSIVE PHASE	PROTECTED PHASE
B	= 4	+ 5

SEE SHEET 64 FOR TRAFFIC SIGNAL LEGEND

SCHEDULE OF QUANTITIES - KIRK ROAD AND TYLER ROAD

PAY ITEM	UNIT	QUANTITY
EARTH EXCAVATION	CU YD	2
PORTLAND CEMENT CONCRETE SIDEWALK 5 INCH	50 FT	23.2
CONDUIT IN TRENCH, 2" DIA., GALVANIZED STEEL	FOOT	10
TRENCH AND BACKFILL FOR ELECTRICAL WORK	FOOT	10
MAINTENANCE OF EXISTING TRAFFIC SIGNAL INSTALLATION	EACH	1
FULL ACTUATED CONTROLLER AND TYPE IV CABINET	EACH	1
ELECTRIC CABLE IN CONDUIT, SERVICE, NO. 6 2C	FOOT	25
CONCRETE FOUNDATION, TYPE A	FOOT	4
DRILL EXISTING HANDHOLE	EACH	1
REMOVE EXISTING TRAFFIC SIGNAL EQUIPMENT	EACH	1
SERVICE INSTALLATION-GROUND MOUNTED	EACH	1
GROUNDING EXISTING HANDHOLE FRAME AND COVER	EACH	3
UNINTERRUPTABLE POWER SUPPLY, STANDARD	EACH	1
ELECTRIC CABLE IN CONDUIT, EQUIPMENT GROUNDING CONDUCTOR, NO. 6 1C	FOOT	255
ETHERNET MANAGED SWITCH TYPE 1	EACH	1
RE-OPTIMIZE TRAFFIC SIGNAL SYSTEM, LEVEL 2	EACH	1
CONFIRMATION BEACON	EACH	3

EMERGENCY VEHICLE PREEMPTION SEQUENCE NOTES FOR DUAL ENTRY OPERATION - ALL LEGS



EXISTING EMERGENCY VEHICLE PREEMPTORS

EMERGENCY VEHICLE PREEMPTOR	3	4
MOVEMENT	→	↓

I.D.O.T. TRAFFIC SIGNAL INSTALLATION ELECTRICAL SERVICE REQUIREMENTS

TYPE	NO. OF LAMPS	WATTAGE (INCAND.)	WATTAGE (LED)	% OPERATION	TOTAL WATTAGE
SIGNAL (RED)	10	17	0.50	0.50	85
(YELLOW)	10	25	0.25	0.25	62.5
(GREEN)	10	15	0.25	0.25	62.5
ARROW	10	12	0.10	0.10	12
PED. SIGNAL	2	25	1.0	1.0	50
CONTROLLER	0	100	1.0	0	0
ILLUM. SIGN	0	25	1.0	0	0
FLASHER	0	-	-	0	0
TOTAL					272

ENERGY COST TO : KANE COUNTY DIVISION OF TRANSPORTATION
41 W011 BURLINGTON ROAD
ST. CHARLES, ILLINOIS 60175

ENERGY SUPPLY CONTACT: GLYNN AMBURLY
PHONE: (630) 377-7009
COMPANY: CITY OF ST. CHARLES

FOUNDATION (DEPTH)	(FT.)	CABLE SLACK	(FT.)	VERTICAL	(FT.)
TYPE A - POST	4	HANDHOLE	6.5	ALL FOUNDATIONS	3.5
C - CONTROLLER W/UPS	4	DOUBLE HANDHOLE	13	MAST ARM (L) POLE	20'x1'-2"
D - CONTROLLER	4	SIGNAL POST	2	BRACKET MOUNTED	13
E - MAST ARM POLE		CONTROLLER CAB.	1	PED. PUSHBUTTON	6
	30"	FIBER OPTIC	13	ELECTRIC SERVICE	13.5
	36"	ELECTRIC SERVICE	1	SERVICE TO GROUND	13.5
	42"	GROUND CABLE	1	POST MOUNTED	6

JACOBS ONE NORTH FRANKLIN CHICAGO IL, 60606 312-251-3000	USER NAME =	DESIGNED - CH	REVISED -	KANE COUNTY DIVISION OF TRANSPORTATION	CABLE PLAN, PHASE DESIGNATION DIAGRAM, AND SCHEDULE OF QUANTITIES KIRK ROAD AND TYLER ROAD	F.A.P. RTE. 360	SECTION 10-00403-00-TL	COUNTY KANE	TOTAL SHEETS 72	SHEET NO. 22
	PLOT SCALE =	CHECKED - KG	REVISED -			SCALE: SHEET NO. OF SHEETS STA. TO STA.	CONTRACT NO. 63648		FED. ROAD DIST. NO. ILLINOIS FED. AID PROJECT	
	PLOT DATE = 11/7/2011	DATE - #DATE	REVISED -							