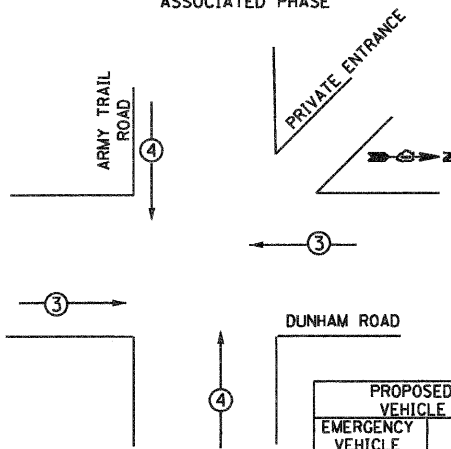


- LEGEND**
- (with 2) DUAL ENTRY PHASE
  - (with 1) SINGLE ENTRY PHASE
  - ◇ (with OL) OVERLAP
  - (with P) PEDESTRIAN PHASE
  - NUMBER REFERS TO ASSOCIATED PHASE



PROPOSED EMERGENCY VEHICLE PREEMPTORS		
EMERGENCY VEHICLE PREEMPTOR	3	4
MOVEMENT	← →	↑ ↓

SEE SHEET 64 FOR TRAFFIC SIGNAL LEGEND

VIDEO SYSTEM DETECTOR PROCESSOR  
ETHERNET MANAGED SWITCH TYPE I  
MALFUNCTION MANAGEMENT UNIT  
(SEE NOTE 2)

PROPOSED INTERCONNECT TO FOX CHASE DRIVE

OUTDOOR RATED NETWORK CABLE

CABLE PLAN  
NOT TO SCALE

NOTES:

1. 36F IS FIBER OPTIC CABLE SM36F
2. MALFUNCTION MANAGEMENT UNIT TO BE PAID FOR UNDER FULL-ACTUATED CONTROLLER AND TYPE IV CABINET

- PUSH BUTTON "A" SHALL PLACE A CALL IN PHASE 4  
PUSH BUTTON "B" SHALL PLACE A CALL IN PHASE 4  
PUSH BUTTON "C" SHALL PLACE A CALL IN PHASE 2  
PUSH BUTTON "D" SHALL PLACE A CALL IN PHASE 2  
PUSH BUTTON "E" SHALL PLACE A CALL IN PHASE 8  
PUSH BUTTON "F" SHALL PLACE A CALL IN PHASE 8

SCHEDULE OF QUANTITIES - DUNHAM ROAD AND ARMY TRAIL ROAD

PAY ITEM	UNIT	QUANTITY
EARTH EXCAVATION	CU YD	2
PORTLAND CEMENT CONCRETE SIDEWALK 5 INCH	SO FT	23.2
CONDUIT IN TRENCH, 2" DIA., GALVANIZED STEEL	FOOT	10
TRENCH AND BACKFILL FOR ELECTRICAL WORK	FOOT	10
MAINTENANCE OF EXISTING TRAFFIC SIGNAL INSTALLATION	EACH	1
FULL-ACTUATED CONTROLLER AND CABINET, TYPE IV, SPECIAL	EACH	1
ELECTRIC CABLE IN CONDUIT, SERVICE, NO. 6 2C	FOOT	25
CONCRETE FOUNDATION, TYPE A	FOOT	4
REMOVE EXISTING TRAFFIC SIGNAL EQUIPMENT	EACH	1
VIDEO SYSTEM DETECTION PROCESSOR	EACH	1
SERVICE INSTALLATION-GROUND MOUNTED	EACH	1
GROUNDING EXISTING HANDHOLE FRAME AND COVER	EACH	3
UNINTERRUPTABLE POWER SUPPLY, STANDARD	EACH	1
ELECTRIC CABLE IN CONDUIT, EQUIPMENT GROUNDING CONDUCTOR, NO. 6 1C	FOOT	241
INTERSECTION VIDEO TRAFFIC MONITORING SYSTEM WITH PTZ CAMERA	EACH	1
OUTDOOR RATED NETWORK CABLE	FOOT	173
ETHERNET MANAGED SWITCH TYPE I	EACH	1
RE-OPTIMIZE TRAFFIC SIGNAL SYSTEM, LEVEL 2	EACH	1
CONFIRMATION BEACON	EACH	4

I.D.O.T. TRAFFIC SIGNAL INSTALLATION ELECTRICAL SERVICE REQUIREMENTS					TOTAL WATTAGE
TYPE	NO. OF LAMPS	WATTAGE INCAND.	LED	% OPERATION	
SIGNAL (RED)	10	17		0.50	85
(YELLOW)	10	25		0.25	62.5
(GREEN)	10	15		0.25	62.5
ARROW	10	12		0.10	12
PED. SIGNAL	2	25		1.0	50
CONTROLLER	0	100		1.0	0
ILLUM. SIGN	0	25		1.0	0
FLASHER	0				0
TOTAL =					272

ENERGY COST TO : ILLINOIS DEPARTMENT OF TRANSPORTATION  
DIVISION OF HIGHWAYS / DISTRICT 1  
201 WEST CENTER COURT / SCHAUMBURG, IL 60196-1096

ENERGY SUPPLY CONTACT: TOM PERKINS  
PHONE: 1-847-894-7968  
COMPANY: COMED

FOUNDATION (DEPTH)	(FT.)	CABLE SLACK	(FT.)	VERTICAL	(FT.)
TYPE A - POST	4	HANDHOLE	6.5	ALL FOUNDATIONS	3.5
C - CONTROLLER W/UPS	4	DOUBLE HANDHOLE	13	MAST ARM (L) POLE	20"HL-2 =
D - CONTROLLER	4	SIGNAL POST	2	BRACKET MOUNTED	13
E - MAST ARM POLE		CONTROLLER CAB.	1	PED. PUSHBUTTON	6
	30"	FIBER OPTIC	13	ELECTRIC SERVICE	13.5
	36"	ELECTRIC SERVICE	1	SERVICE TO GROUND	13.5
	42"	GROUND CABLE	1	POST MOUNTED	6

**JACOBS**  
ONE NORTH FRANKLIN  
CHICAGO IL, 60606  
312-251-3000

USER NAME =	DESIGNED - CH	REVISED -
PLOT SCALE =	DRAWN - MO, DI	REVISED -
PLOT DATE = 11/7/2011	CHECKED - KC	REVISED -
	DATE - #DATE	REVISED -

KANE COUNTY  
DIVISION OF TRANSPORTATION

CABLE PLAN, PHASE DESIGNATION DIAGRAM,  
AND SCHEDULE OF QUANTITIES  
DUNHAM ROAD AND ARMY TRAIL ROAD

SCALE: N.T.S. SHEET NO. OF SHEETS STA. TO STA.

F.A.P. RTE.	SECTION	COUNTY	TOTAL SHEETS	SHEET NO.
360	10-00403-00-TL	KANE	72	32
FED. ROAD DIST. NO. (ILLINOIS) FED. AID PROJECT			CONTRACT NO. 63648	