

F.A. RTE.	SECTION	COUNTY	TOTAL SHEETS	SHEET NO.
	04-00092-00-BR	KANE	440	1
		ILLINOIS	CONTRACT NO. 63650	

**STATE OF ILLINOIS  
DEPARTMENT OF TRANSPORTATION  
DIVISION OF HIGHWAYS**

**PROPOSED PLANS  
FOR FEDERAL AID HIGHWAY  
MAIN CONTRACT  
RED GATE ROAD OVER FOX RIVER  
ILLINOIS ROUTE 31 TO ILLINOIS ROUTE 25  
BRIDGE CONSTRUCTION**

FOR INDEX OF SHEETS, SEE SHEET NO. 2

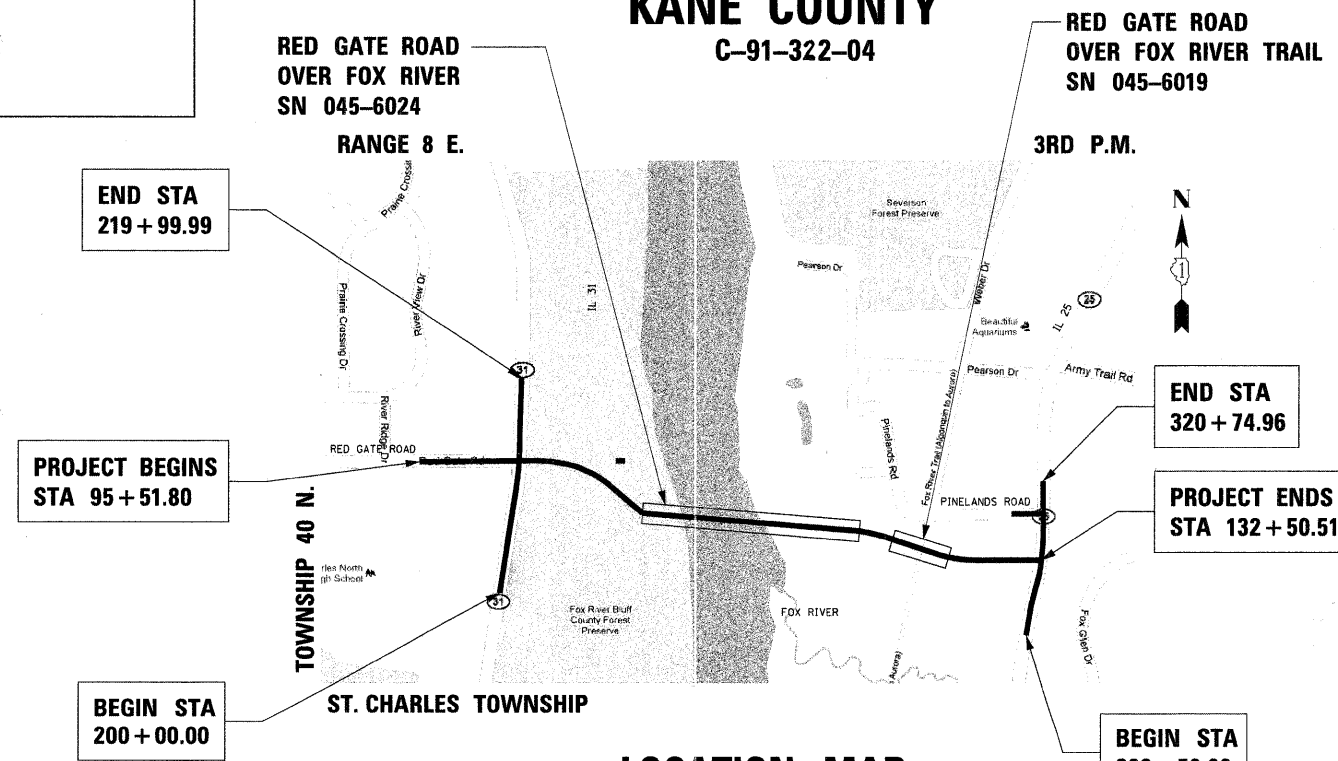
**DESIGN DESIGNATION AND TRAFFIC DATA**

2030 ADT VEHICLES	
RED GATE ROAD	= 15,500
IL 25	= N 28,000 / S 30,500
IL 31	= N 12,400 / S 13,100
RED GATE ROAD DESIGN SPEED	= 40 MPH
IL 25 DESIGN SPEED	= 45 MPH
IL 31 DESIGN SPEED	= 50 MPH
FUNCTION CLASSIFICATION:	- OTHER PRINCIPAL ARTERIAL (OPA)

**SECTION 04-00092-00-BR  
PROJECT [REDACTED] M-TE-CMM-HD-TCSP-ILO8(030)  
CITY OF ST. CHARLES  
KANE COUNTY**



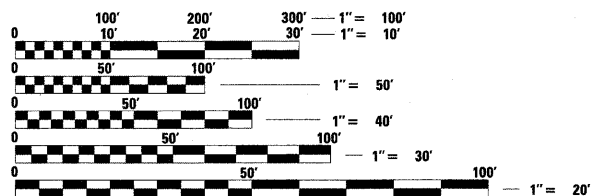
PROGRAM AND OFFICE ENGINEER: CHARLES F. RIDDLE, P.E. 847-705-4406 SCHAUMBURG, IL



**LOCATION MAP**

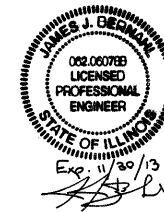
SCALE: NTS

GROSS LENGTH = 3,698.71 FT. = 0.701 MILE  
NET LENGTH = 3,698.71 FT. = 0.701 MILE



FULL SIZE PLANS HAVE BEEN PREPARED USING STANDARD ENGINEERING SCALES. REDUCED SIZED PLANS WILL NOT CONFORM TO STANDARD SCALES. IN MAKING MEASUREMENTS ON REDUCED PLANS, THE ABOVE SCALES MAY BE USED.

J.U.L.I.E.  
JOINT UTILITY LOCATION INFORMATION FOR EXCAVATION  
1-800-892-0123  
OR 811



STATE OF ILLINOIS  
DEPARTMENT OF TRANSPORTATION  
DIVISION OF HIGHWAYS

APPROVED October 17th 20 11

*[Signature]*  
CITY OF ST. CHARLES PUBLIC WORKS ENGINEERING DIVISION MANAGER

PASSED November 23rd 11

*[Signature]*  
DISTRICT 1 ENGINEER OF LOCAL ROADS AND STREETS

RELEASING FOR BID  
BASED ON LIMITED  
REVIEW November 28, 20 11

*[Signature]*  
DEPUTY DIRECTOR OF HIGHWAYS, REGION 1 ENGINEER

CONTRACT NO. 63650

**benesch**  
engineers · scientists · planners

Alfred Benesch & Company  
205 North Michigan Avenue, Suite 2400  
Chicago, Illinois 60601  
312-565-0450 Job No. 10074

EXPIRATION DATE: 11-30-2012  
DATE: 10-21-2011

**PRINTED BY THE AUTHORITY  
OF THE STATE OF ILLINOIS**