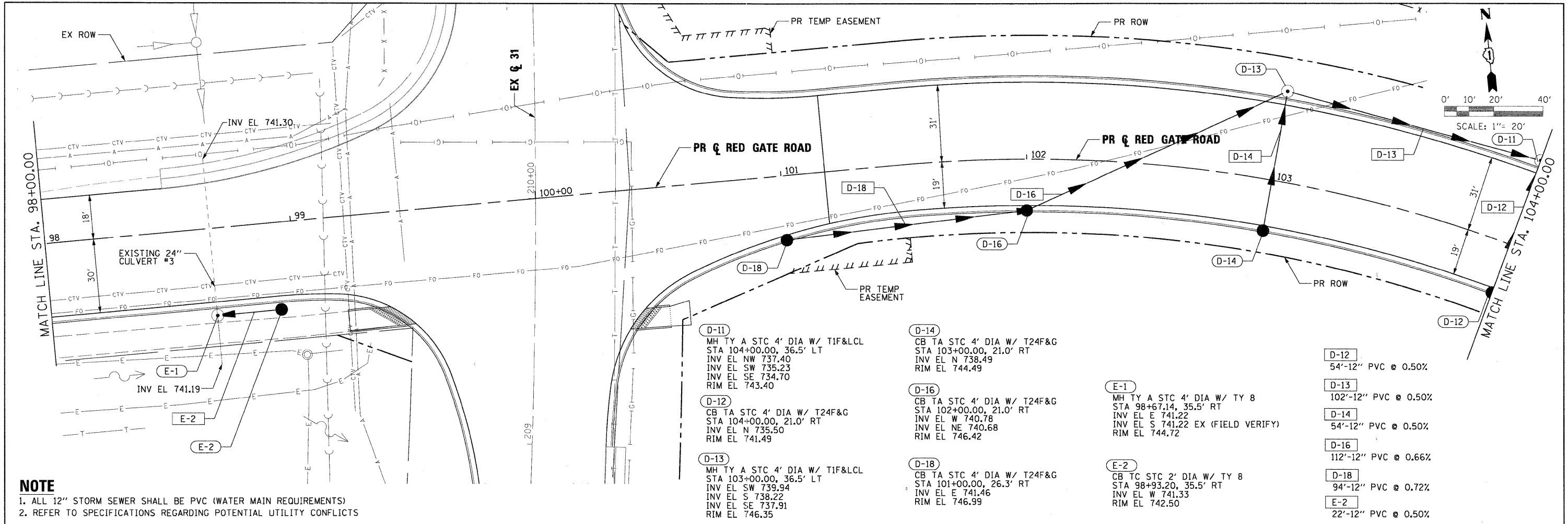


PLAN	SURVEYED	DATE
	ALIGNED	
	NOTED	
	BY	
	NO.	

PROFILE	SURVEYED	DATE
	NOTED	
	BY	
	NO.	

PLOT SCALE: 1/2"=20'
 LOCAL WORKSPACE: P:\Projects\04-00092-00-Red Gate Rd\Drawings\DRW\UTL\PRF.DWG
 X:\WORKSPACE\04-00092-00-Red Gate Rd\Drawings\DRW\UTL\PRF.DWG



NOTE
 1. ALL 12" STORM SEWER SHALL BE PVC (WATER MAIN REQUIREMENTS)
 2. REFER TO SPECIFICATIONS REGARDING POTENTIAL UTILITY CONFLICTS

D-11
 MH TY A STC 4' DIA W/ T1F&LCL
 STA 104+00.00, 36.5' LT
 INV EL NW 737.40
 INV EL SW 735.23
 INV EL SE 734.70
 RIM EL 743.40

D-12
 CB TA STC 4' DIA W/ T24F&G
 STA 104+00.00, 21.0' RT
 INV EL N 735.50
 RIM EL 741.49

D-13
 MH TY A STC 4' DIA W/ T1F&LCL
 STA 103+00.00, 36.5' LT
 INV EL SW 739.94
 INV EL S 738.22
 INV EL SE 737.91
 RIM EL 746.35

D-14
 CB TA STC 4' DIA W/ T24F&G
 STA 103+00.00, 21.0' RT
 INV EL N 738.49
 RIM EL 744.49

D-16
 CB TA STC 4' DIA W/ T24F&G
 STA 102+00.00, 21.0' RT
 INV EL W 740.78
 INV EL NE 740.68
 RIM EL 746.42

D-18
 CB TA STC 4' DIA W/ T24F&G
 STA 101+00.00, 26.3' RT
 INV EL E 741.46
 RIM EL 746.99

E-1
 MH TY A STC 4' DIA W/ TY 8
 STA 98+67.14, 35.5' RT
 INV EL E 741.22
 INV EL S 741.22 EX (FIELD VERIFY)
 RIM EL 744.72

E-2
 CB TC STC 2' DIA W/ TY 8
 STA 98+93.20, 35.5' RT
 INV EL W 741.33
 RIM EL 742.50

D-12
 54'-12" PVC @ 0.50%

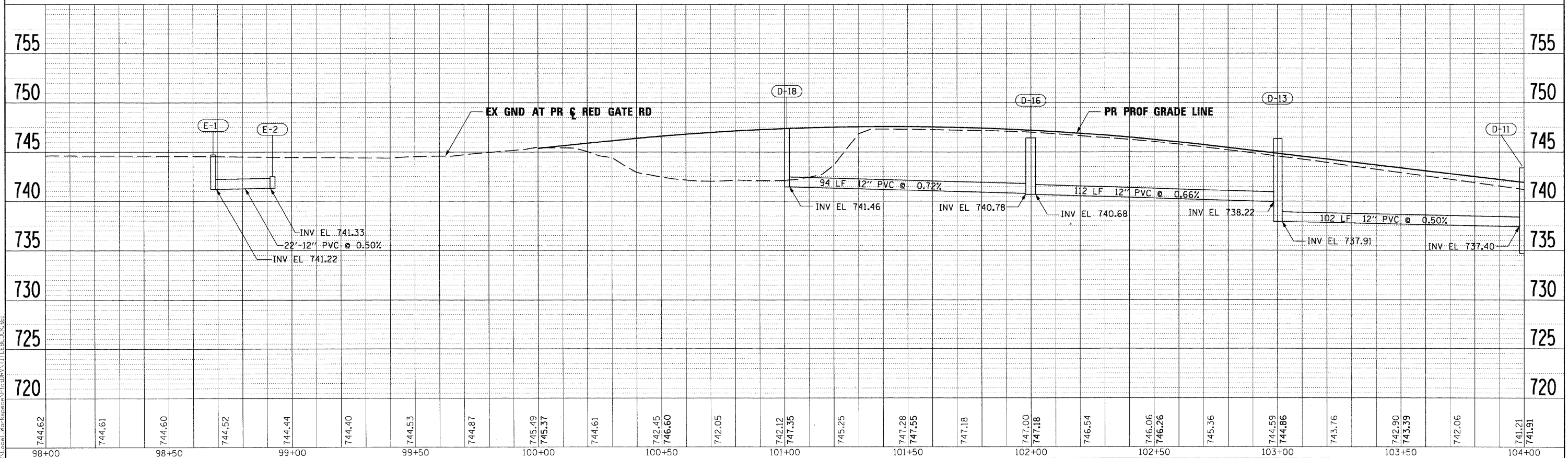
D-13
 102'-12" PVC @ 0.50%

D-14
 54'-12" PVC @ 0.50%

D-16
 112'-12" PVC @ 0.66%

D-18
 94'-12" PVC @ 0.72%

E-2
 22'-12" PVC @ 0.50%



FILE NAME =	DESIGNED - MAC	REVISED -		CITY OF ST. CHARLES	DRAINAGE AND UTILITY PLAN AND PROFILE RED GATE ROAD			F.A. RTE.	SECTION	COUNTY	TOTAL SHEETS	SHEET NO.
USER NAME = tblank	DRAWN - TMB	REVISED -						04-00092-00-BR	KANE	440	126	
PLOT DATE = 11/29/2011	CHECKED - RMT	REVISED -			SCALE: 1"=20' SHEET NO. 2 OF 19 SHEETS STA. 98+00.00 TO STA. 104+00.00			CONTRACT NO. 63650				
	DATE = 10/23/2011	REVISED -			ILLINOIS FED. AID PROJECT							