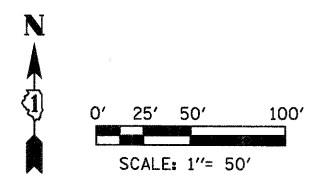


**LEGEND**

- SEEDING, CLASS 2A, 25000210
- SEEDING, CLASS 5, 25000320  
AND  
SEEDING, CLASS 4A (MODIFIED) X2502014
- ORNAMENTAL TREES:  
AMG = AMELANCHIER X GRANDIFLORA 'AUTUMN BRILLIANCE', B2000768  
CEC = CERCIS CANADENSIS, A2C02501  
MPR = MALUS PRAIRIE ROSE, A2007064
- EVERGREEN TREES:  
PIG = PICEA GLAUCA, D2001872  
PIP = PICEA PUNGENS, D2002172  
PIS = PINUS STROBUS, D2002972

- SHADE TREES:
- ACF = ACER FREEMANII 'AUTUMN BLAZE', A2000120
  - ACS = ACER SACCHARUM, A2001710
  - ACR = ACER RUBRUM, A2001012
  - CAC = CARYA CORDIFORMIS, A2002612
  - CEO = CELTIS OCCIDENTALIS, A2002920
  - GYD = GYMNOCLADUS DIOICUS, A2005020
  - JUN = JUGLANS NIGRA, A2005110
  - NYS = NYSSA SYLVATICA, A2005512
  - OSV = OSTRY VIRGINIANA, A2C05600
  - QUB = QUERCUS BICOLOR, A2006520
  - QUI = QUERCUS IMBRICARIA, A2006612
  - QMA = QUERCUS MACROCARPA, A2006720
  - QUM = QUERCUS MEHLENBERGII, A2006820
  - QUR = QUERCUS RUBRA, A2007112
  - TAD = TAXODIUM DISTICHUM, A2007620



FILE NAME =	DESIGNED - BD/WS	REVISED	 225 W. OHIO ST., FOURTH FL. CHICAGO, IL 60654 (312)467-0123	CITY OF ST. CHARLES RED GATE ROAD LANDSCAPE PLAN - WEST BANK		F.A. RTE.	SECTION	COUNTY	TOTAL SHEETS	SHEET NO.
USER NAME = TERRA	DRAWN - BD/JW/KC	REVISED -				04-00092-00-BR	KANE	440	178	
PLOT DATE = 11/9/2011	CHECKED - WS	REVISED -				CONTRACT NO. 63650				
	DATE - 10/24/2011	REVISED -		SCALE:	SHEET NO. OF SHEETS	STA.	TO STA.	ILLINOIS FED. AID PROJECT		