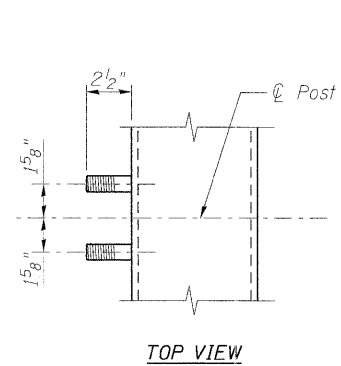
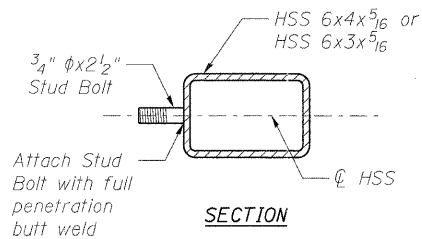


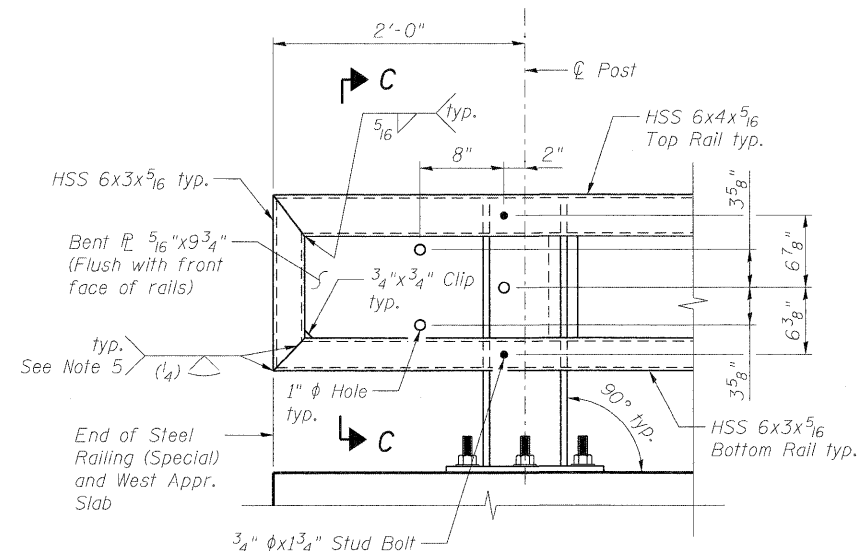
RAIL POST ASSEMBLY DETAIL



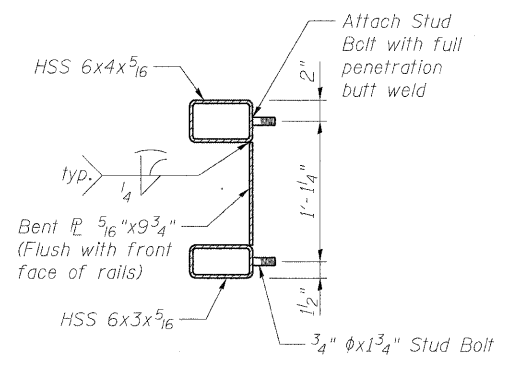
TOP VIEW



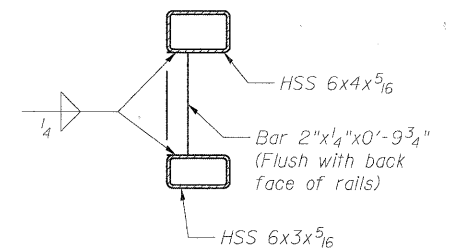
DETAIL 1



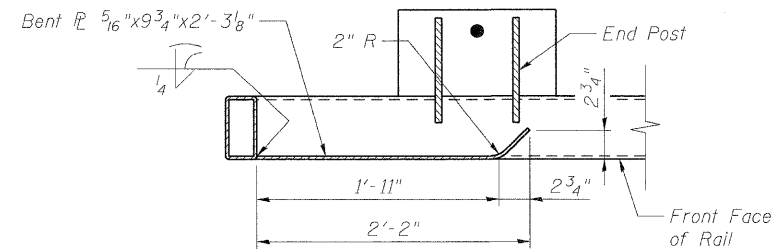
WEST RAILING END TERMINAL
(See Note 3)



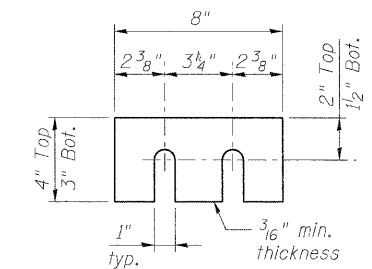
SECTION C-C



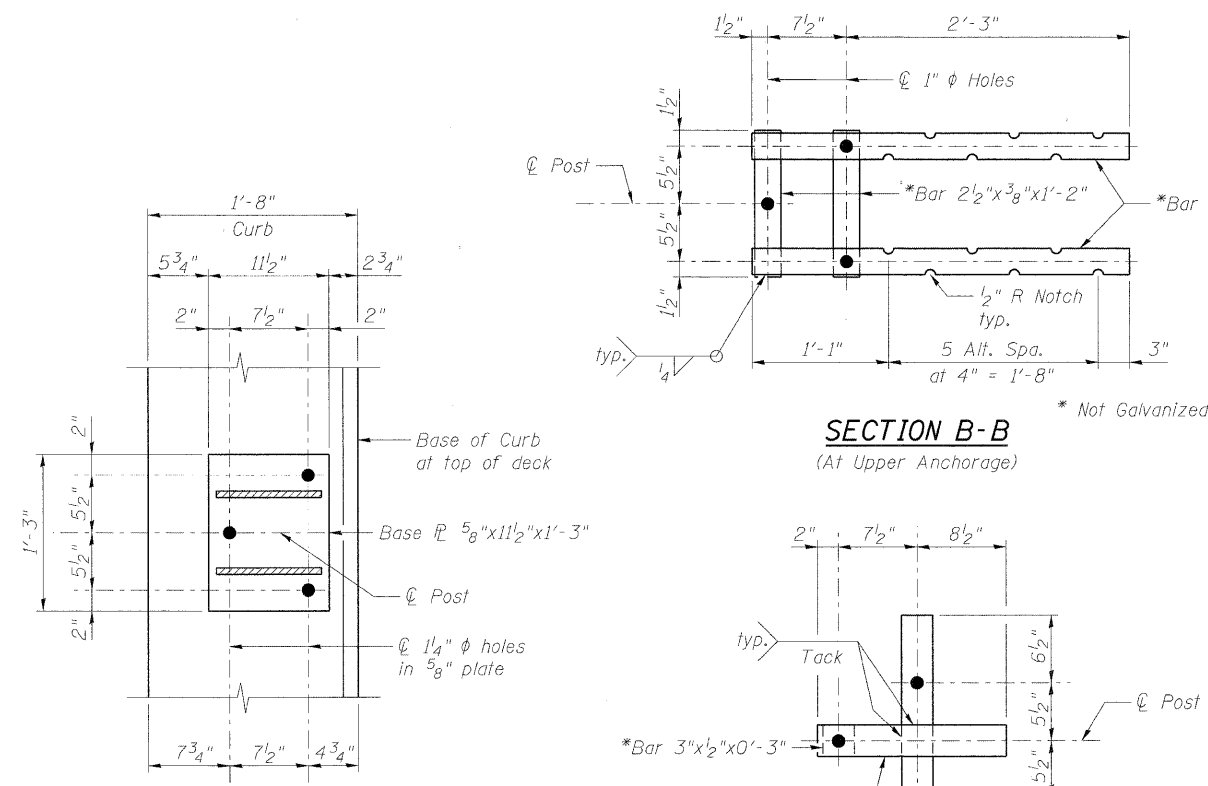
BRACE BAR DETAIL
(See Note 2)



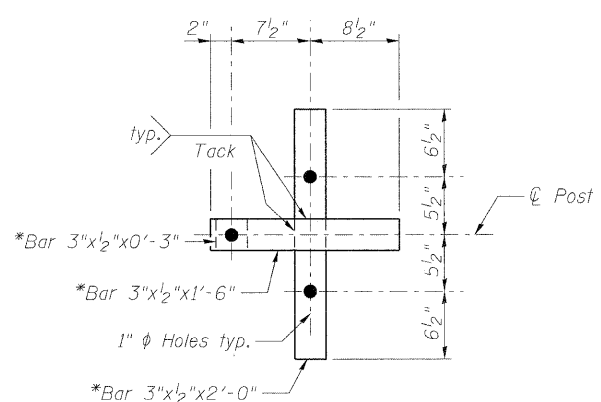
BENT PLATE DETAIL



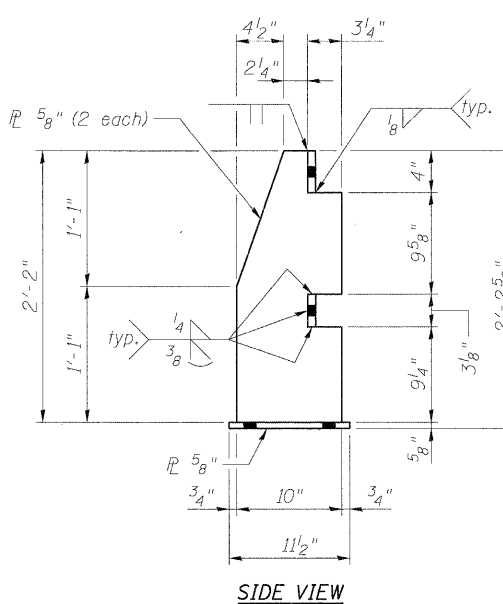
SHIM PLATE DETAIL



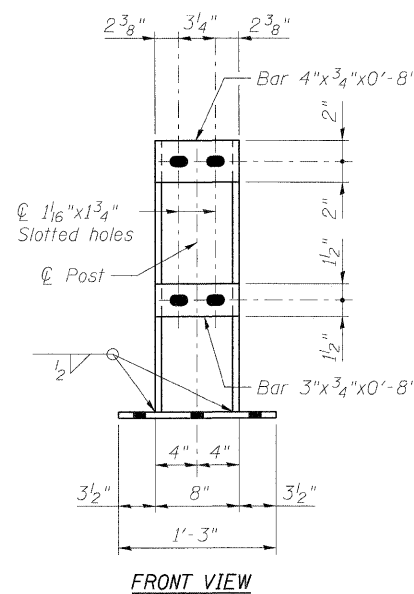
SECTION B-B
(At Upper Anchorage)



SECTION B-B
(At Lower Anchorage)



SIDE VIEW



FRONT VIEW

RAIL POST DETAIL
(See View A-A for Anchor Bolt spacing)

NOTES:

- Anchor bolts may be tack welded to lower anchorage (Shop or Field).
- Brace bars shall be placed 2'-0" from the splice end of the shorter tube at end terminals.
- Contractor shall coordinate hole locations of the traffic barrier terminal end shoes with the west railing end terminal shown above. Slotting or relocating holes in the end shoes will be required. Bolted connections through the bent plate shall be made with 3/4 inch diameter H.S. bolts and nuts. Cost of this work shall be included with "Steel Railing (Special)."
- Shim plates shall be provided as required to align front face of railing with flow line of curb during construction. Cost of this work shall be included with "Steel Railing (Special)."
- Fabricator shall prepare a macroetched sample of the indicated joint to demonstrate that the required effective throat is achieved.

benesch
engineers · scientists · planners
Alfred Benesch & Company
205 North Michigan Avenue, Suite 2400
Chicago, Illinois 60601
312-565-0450 Job No. 10092

FILE NAME =	USER NAME = akoeschall	DESIGNED - MFH	REVISED -
0456024_013_WgoRe11.dgn		CHECKED - AJK	REVISED -
		DRAWN - RMG	REVISED -
		CHECKED - AJK	REVISED -



CITY OF ST. CHARLES

2-TUBE RAILING DETAILS (1 OF 2)
STRUCTURE NO. 045-6024 RED GATE ROAD OVER THE FOX RIVER

SHEET NO. S13 OF S56 SHEETS

F.A.I. RTE.	SECTION	COUNTY	TOTAL SHEETS	SHEET NO.
	04-00092-00-BR	KANE	440	235
			CONTRACT NO. 63650	
ILLINOIS FED. AID PROJECT				

xx:\10000s\10092\engineer\ng_documents_redgatephase1\grover-foxriver\Final\plans\0456024_013_WgoRe11.dgn 5:02:31 PM 11/9/2011