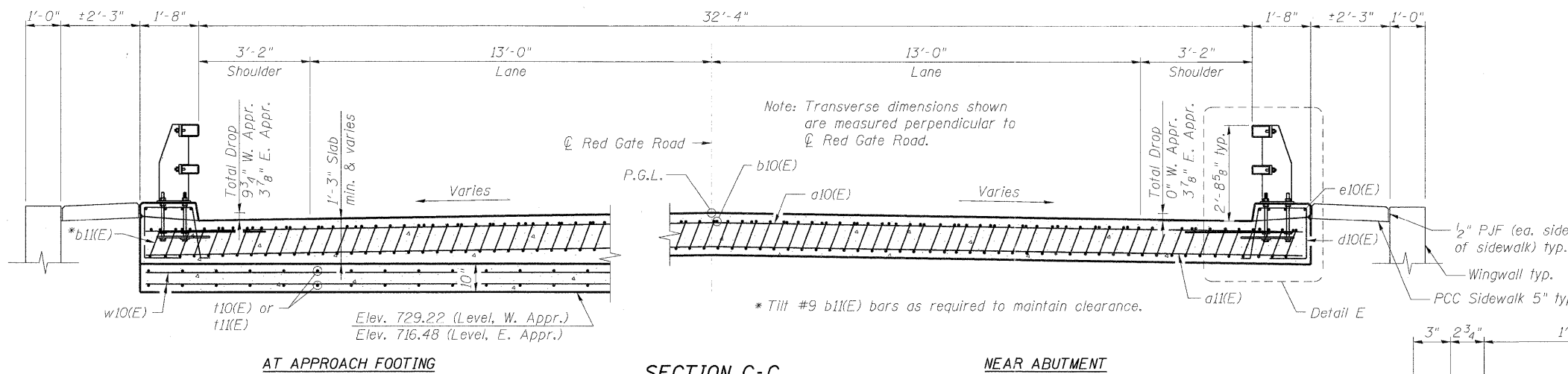


* Tilt #9 b11(E) bars as required to maintain clearance.
 *** Cost included with Concrete Superstructure.

SECTION B-B

NOTES:

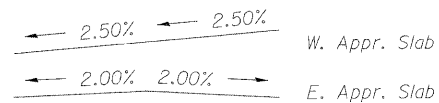
1. Work this sheet with sheet S15.
2. Approach slab and curb concrete shall be paid for as Concrete Superstructure.
3. Approach footing concrete shall be paid for as Concrete Structures.
4. Reinforcement shall be paid for as Reinforcement Bars, Epoxy Coated.
5. For v4(E) bar details, see Sheets S37 thru S40.
6. The approach footing maximum applied service bearing pressure (Q_{max}) = 2.0 ksf.
7. For bar splicer details, see Sheet S49.
8. Cost of excavation for approach footing included with Concrete Structures.
9. For Porous Granular Embankment (Special) and drainage treatment details, see sheet S2.
10. See Sheets S13 and S14 for additional railing details and dimensions.



* Tilt #9 b11(E) bars as required to maintain clearance.

SECTION C-C

(See Plan for dimensions not shown)

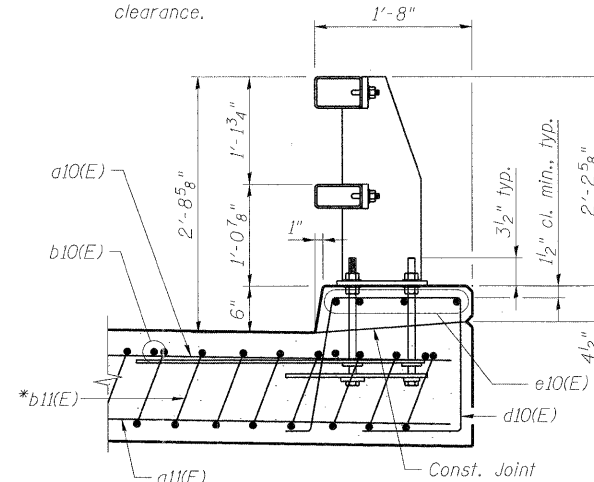


CROSS SLOPES

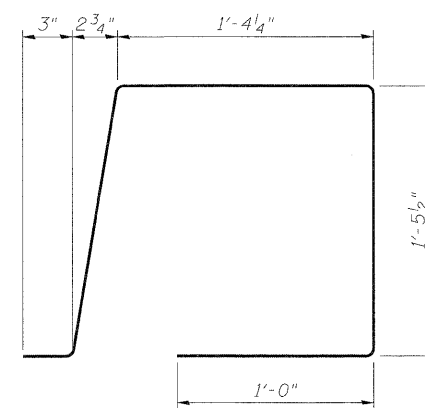
(Looking East)

NEAR ABUTMENT

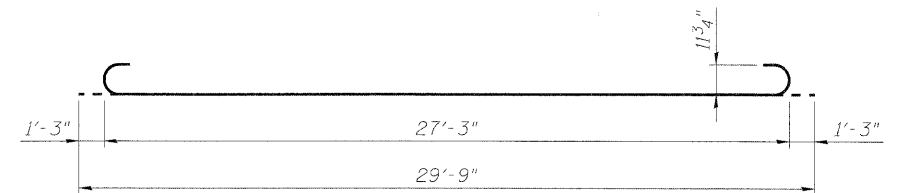
* Tilt #9 b11(E) bars as required to maintain clearance.



DETAIL E



BAR d10(E)

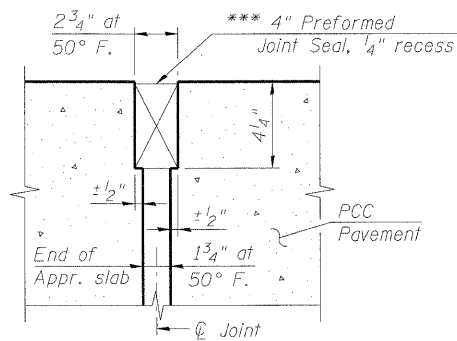


BAR b11(E)

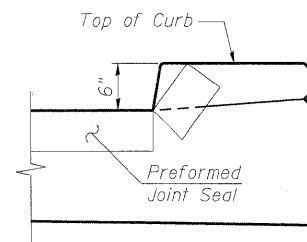
**TWO APPROACHES
BILL OF MATERIAL**

Bar	No.	Size	Length	Shape
a10(E)	100	#4	19'-9"	—
a11(E)	184	#5	20'-0"	—
b10(E)	60	#4	29'-8"	—
b11(E)	176	#9	29'-9"	—
d10(E)	136	#5	5'-7"	⌊
e10(E)	16	#5	29'-8"	—
f10(E)	74	#4	9'-8"	—
f11(E)	74	#4	10'-0"	—
w10(E)	160	#5	20'-0"	—
			Cu. Yd.	108.8
			Cu. Yd.	22.5
			Pound	29,800
			Sq. Ft.	227
			Sq. Yd.	245
			Sq. Yd.	203

*** Cost included with Concrete Superstructure.

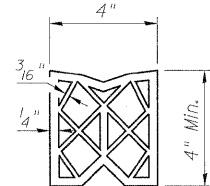


DETAIL A



VIEW D-D

Angle Preformed Joint Seal at 45° at curbs when req'd for drainage.



PREFORMED JOINT SEAL

benesch
 Alfred Benesch & Company
 205 North Michigan Avenue, Suite 2400
 Chicago, Illinois 60601
 312-565-0450 Job No. 10092

FILE NAME =	USER NAME = akesschal	DESIGNED - MFH	REVISED -
4456024_016_Appr2.dgn		CHECKED - AJK	REVISED -
		DRAWN - RMG	REVISED -
		CHECKED - AJK	REVISED -



CITY OF ST. CHARLES

BRIDGE APPROACH SLAB DETAILS
STRUCTURE NO. 045-6024 RED GATE ROAD OVER THE FOX RIVER

SHEET NO. S16 OF S56 SHEETS

F.A.I. RTE.	SECTION	COUNTY	TOTAL SHEETS	SHEET NO.
	04-00092-00-BR	KANE	440	238
			CONTRACT NO. 63650	
ILLINOIS FED. AID PROJECT				

xt:10000s\10092\engineer\ng-documents\redgatephase1\rgoverfoxriver\plans\0456024_016_Appr2.dgn
 5:02:45 PM 11/9/2011