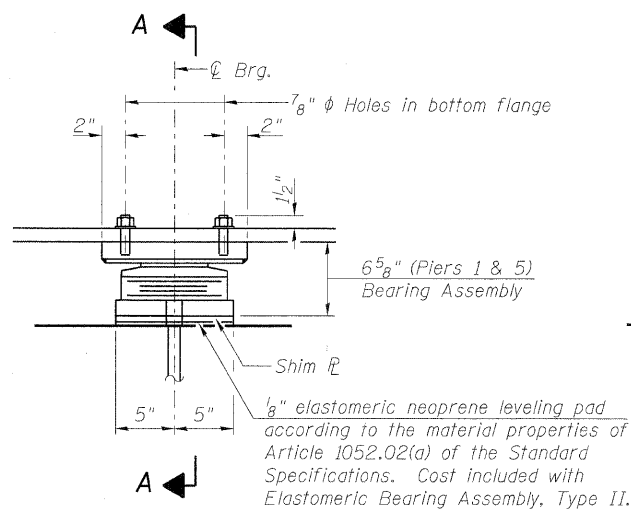
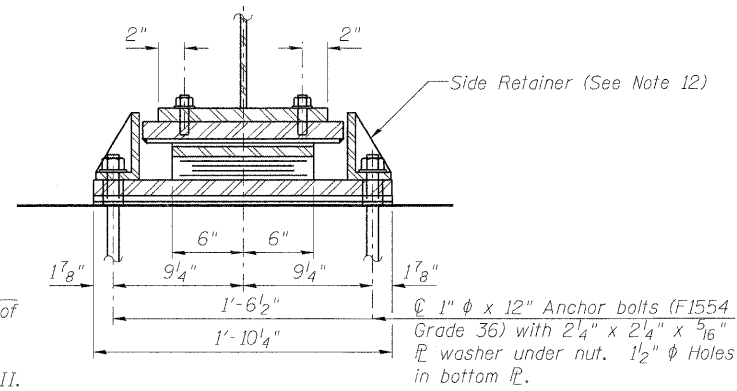


ELEVATION AT ABUTS. & PIER 3

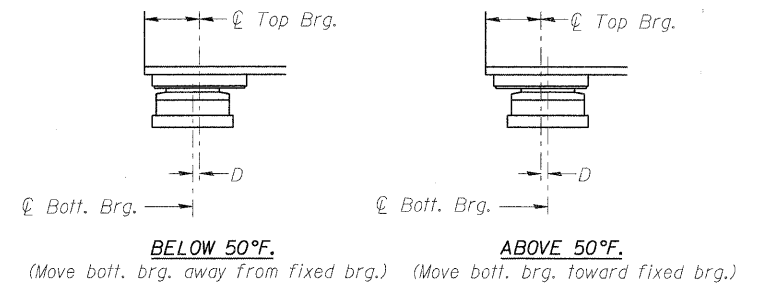


ELEVATION AT PIERS 1 & 5

TYPE II ELASTOMERIC EXP. BRG.



SECTION A-A



SETTING ANCHOR BOLTS AT EXP. BRG.

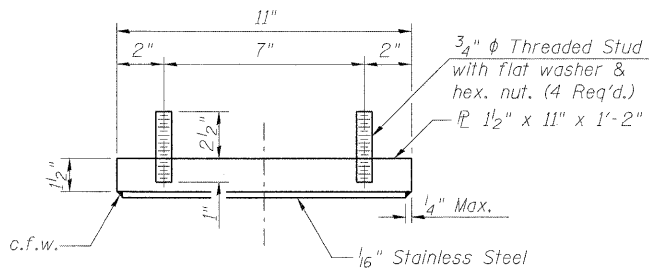
(D=1/8" per each 100' of expansion for every 15° temp. change from the normal temp. of 50°F.)

NOTES:

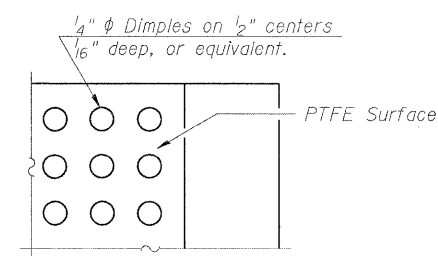
- Anchor bolts for expansion bearings shall be ASTM F1554 all-thread (or an Engineer-approved alternate material) of the grade(s) and diameter(s) specified. ASTM A307 Grade C anchor bolts may be used in lieu of ASTM F1554 Grade 36 (Fy=36ksi). The corresponding specified grade of AASHTO M314 anchor bolts may be used in lieu of ASTM F1554.
- Anchor bolts at fixed bearings may be either cast in place or installed in holes drilled after the supported member is in place.
- Anchor bolts for Type II bearings shall be placed in holes drilled in the concrete through holes in the bottom bearing plate after members are in place. Side retainers shall be placed after bolts are installed.
- Drilled and set anchor bolts shall be installed according to Article 521.06 of the Standard Specifications.
- Side retainers and other steel members required for the elastomeric bearing assembly shall be included in the cost of Elastomeric Bearing Assembly, Type II.
- The 1/8" PTFE sheet shall be bonded directly to the top steel plate with a two-component, medium viscosity epoxy resin, conforming to the requirements of the Federal Specification MMM-A-134, Type I. The bond agent shall be applied on the full area of the contact surfaces.
- Bonding of 1/8" PTFE sheet during vulcanizing process will be permitted provided the process and method of adjusting assembly height is approved by the Engineer.
- The structural steel plates and pintle of the Bearing Assemblies shall conform to the requirements of AASHTO M 270 Grade 50.
- Steel required for the fixed bearing assemblies at Piers 2 and 4 shall be included in the cost of Furnishing and Erecting Structural Steel Bridge No. 1
- A 1/4" shim plate is required at Piers 2 thru 5 for the Girder 1 bearings to account for the grade difference caused by the skew.
- Two 1/8" adjusting shims shall be provided for each bearing in addition to all other plates or shims and placed as shown on bearing details.
- Inside side retainers may be omitted at abutments only.
- See pier details sheets of SN 045-6024 for seat elevations.

BILL OF MATERIAL

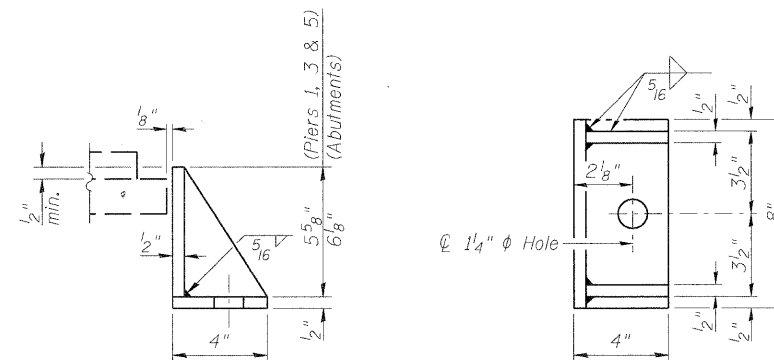
Item	Unit	Total
Elastomeric Bearing Assembly, Type II	Each	12
Anchor Bolts, 1"	Each	24
Anchor Bolts, 1 1/4"	Each	8



TOP BEARING ASSEMBLY

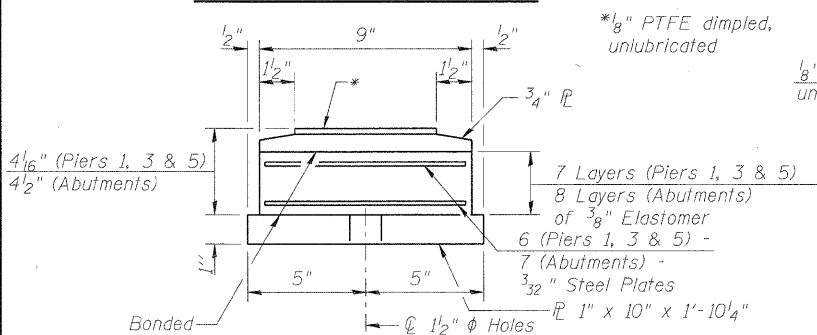


PLAN-PTFE SURFACE

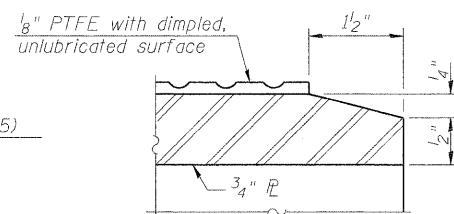


SIDE RETAINER

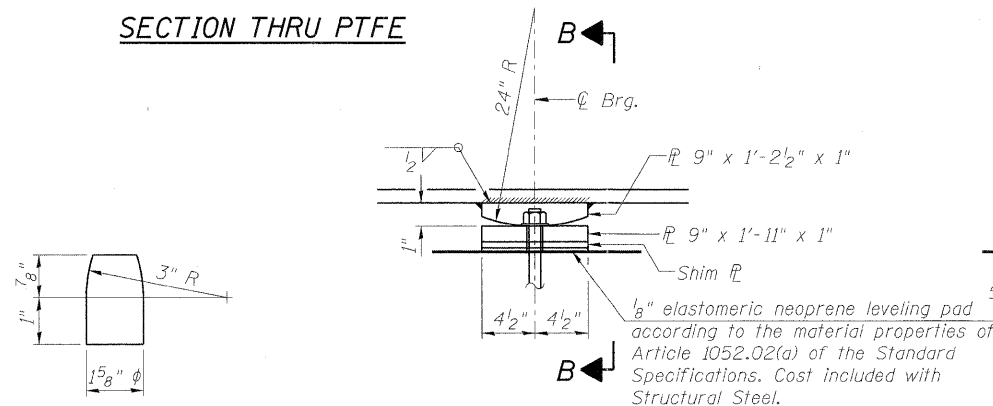
(Equivalent rolled angle with stiffeners will be allowed in lieu of welded plates.)



BOTTOM BEARING ASSEMBLY

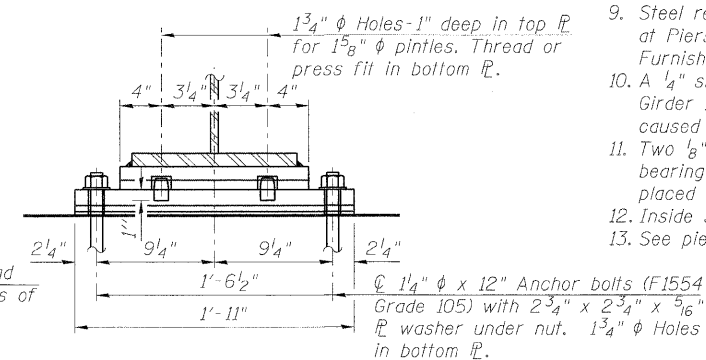


SECTION THRU PTFE

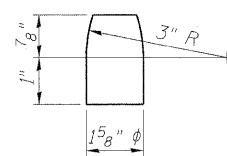


ELEVATION AT PIERS 2 & 4

FIXED BEARING



SECTION B-B



PINTLE

benesch Alfred Benesch & Company
205 North Michigan Avenue, Suite 2400
Chicago, Illinois 60601
312-585-0450 Job No. 10092

I-2E-2

7-1-10

FILE NAME = 0456020.15_BrgDtls.dgn	USER NAME = akoeschell	DESIGNED - JLS	REVISED -
		CHECKED - LRB	REVISED -
	PLOT SCALE =	DRAWN - RMG	REVISED -
	PLOT DATE = 11/10/2011	CHECKED - AJK	REVISED -



CITY OF ST. CHARLES

BEARING DETAILS
STRUCTURE NO. 045-6020 MULTI-USE TRAIL BRIDGE OVER FOX RIVER
SHEET NO. SM15 OF SM19 SHEETS

F.A.I. RTE.	SECTION	COUNTY	TOTAL SHEETS	SHEET NO.
	04-00092-00-BR	KANE	440	293
				CONTRACT NO. 63650
ILLINOIS FED. AID PROJECT				