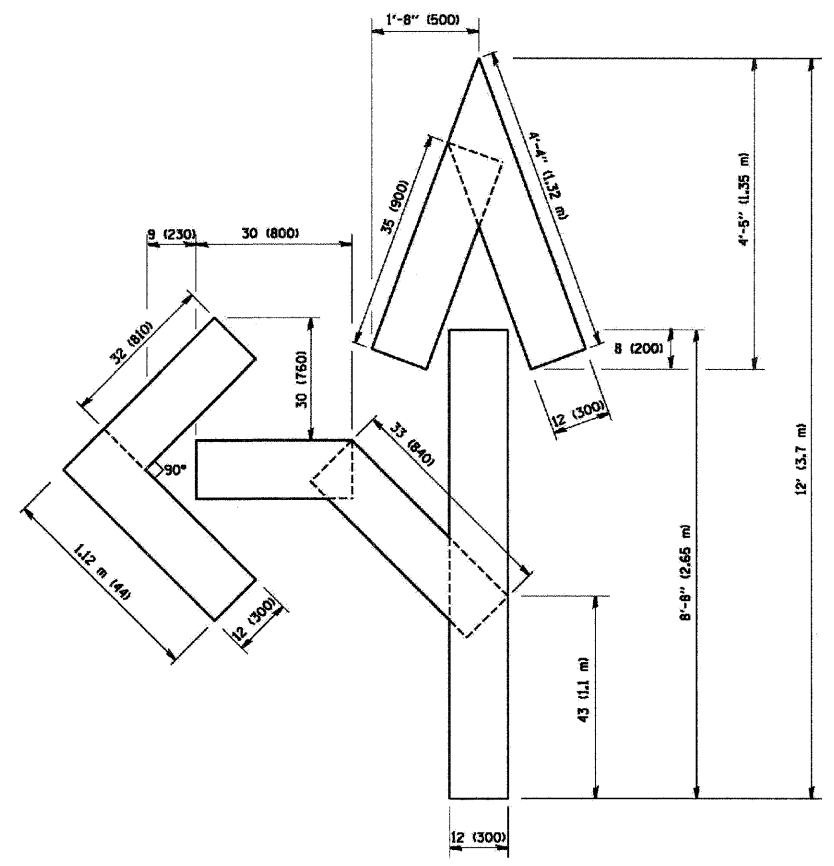
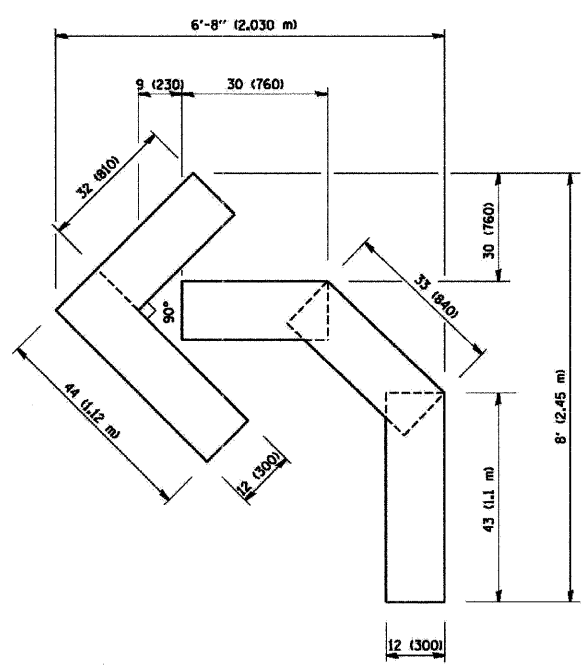


QUANTITY
 4 (100) LINE = 64.1 ft. (19.7 m)
 21.1 sq. ft. (1.97 sq. m)



QUANTITY
 4 (100) LINE = 82.5 ft. (25.3 m)
 27.5 sq. ft. (2.53 sq. m)



QUANTITY
 4 (100) LINE = 45.5 ft. (13.9 m)
 15.2 sq. ft. (1.39 sq. m)

All dimensions are in inches (millimeters) unless otherwise shown.

FILE NAME = G:\CD\1\0013\Road\Sheets\C-504-TC-16.sht	USER NAME = gaglianobt	DESIGNED -	REVISED - T. RAMMACHER 06-05-96
		DRAWN -	REVISED - T. RAMMACHER 11-04-97
		CHECKED -	REVISED - T. RAMMACHER 03-02-98
		DATE - 09-18-94	REVISED - E. GOMEZ 08-28-00

STATE OF ILLINOIS
 DEPARTMENT OF TRANSPORTATION

PAVEMENT MARKING LETTERS AND SYMBOLS
 FOR TRAFFIC STAGING

SCALE: NONE SHEET NO. 1 OF 1 SHEETS STA. TO STA.

F.A.U. RTE. 2678/2676	SECTION 11-00179-00-LS	COUNTY DUPAGE	TOTAL SHEETS 28	SHEET NO. 25
TC-16			CONTRACT NO. 63652	
FED. ROAD DIST. NO. 7 ILLINOIS FED. AID PROJECT				