

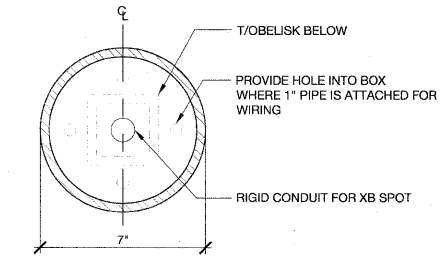
Qty: Provide 5 identical structures

**F1 Elevation**

SCALE: 3/4"=1'-0"

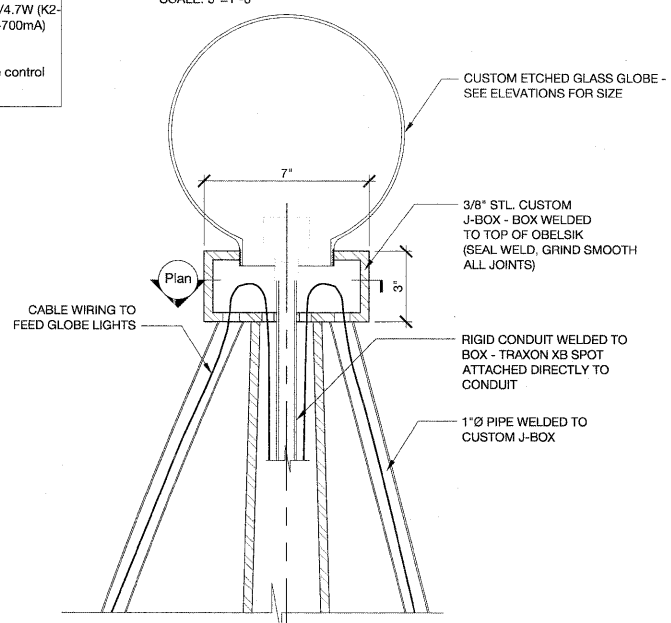
**L.E.D. LIGHTING SYSTEM**  
(Custom etched glass globes not by Traxon)

MODEL:	Traxon Spot XB Series (Or Engineer Approved Equal)
LIGHT SOURCE:	3 High Intensity power LEDs
COLOR RESOLUTION:	3x8-bit (RGB) per pixel
COLOR OPTIONS:	RGB
BEAM ANGLE:	6°, 15°, 25°
COVER LENS:	Winona Round Globe, Size TBD
HOUSING:	Aluminum Extrusion
ADJUST. OPTIONS:	MR16 Mounting
SIZE:	2.70" (Height); 1.97" (Diameter)
SAFETY APPROVAL:	CE
OPERATING TEMP.:	-4°F to 104°F
RATING:	Outdoor
HUMIDITY:	0 to 85%
CONSTANT CURRENT:	350mA, 700mA DC
POWER CONSUMPTION:	3.4W/3.7W (1W), 3.4W/4.7W (K2-350mA), 7.6W/9W (K2-700mA)
POWER/DATA INTERFACE:	TX CONNECT
CONTROL:	DMX512 or standalone control
POWER SUPPLY:	LED Engine XB-SD



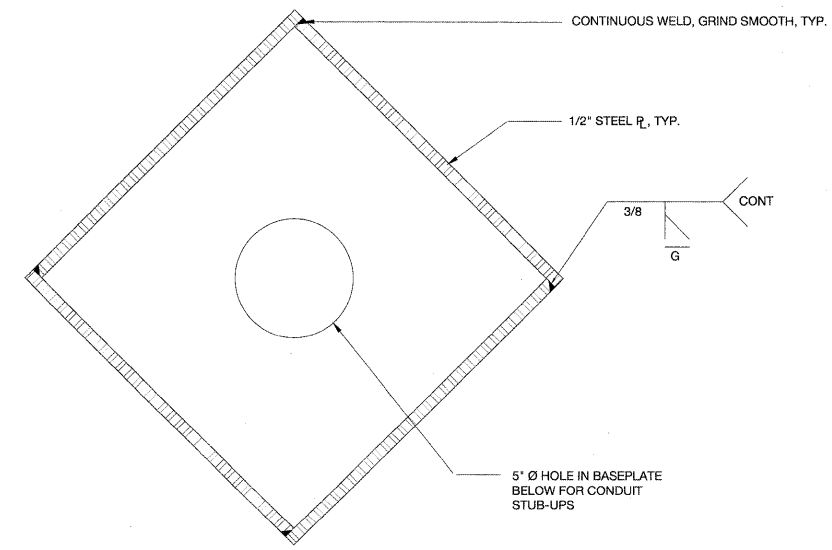
**C4 Plan Detail**

SCALE: 3"=1'-0"



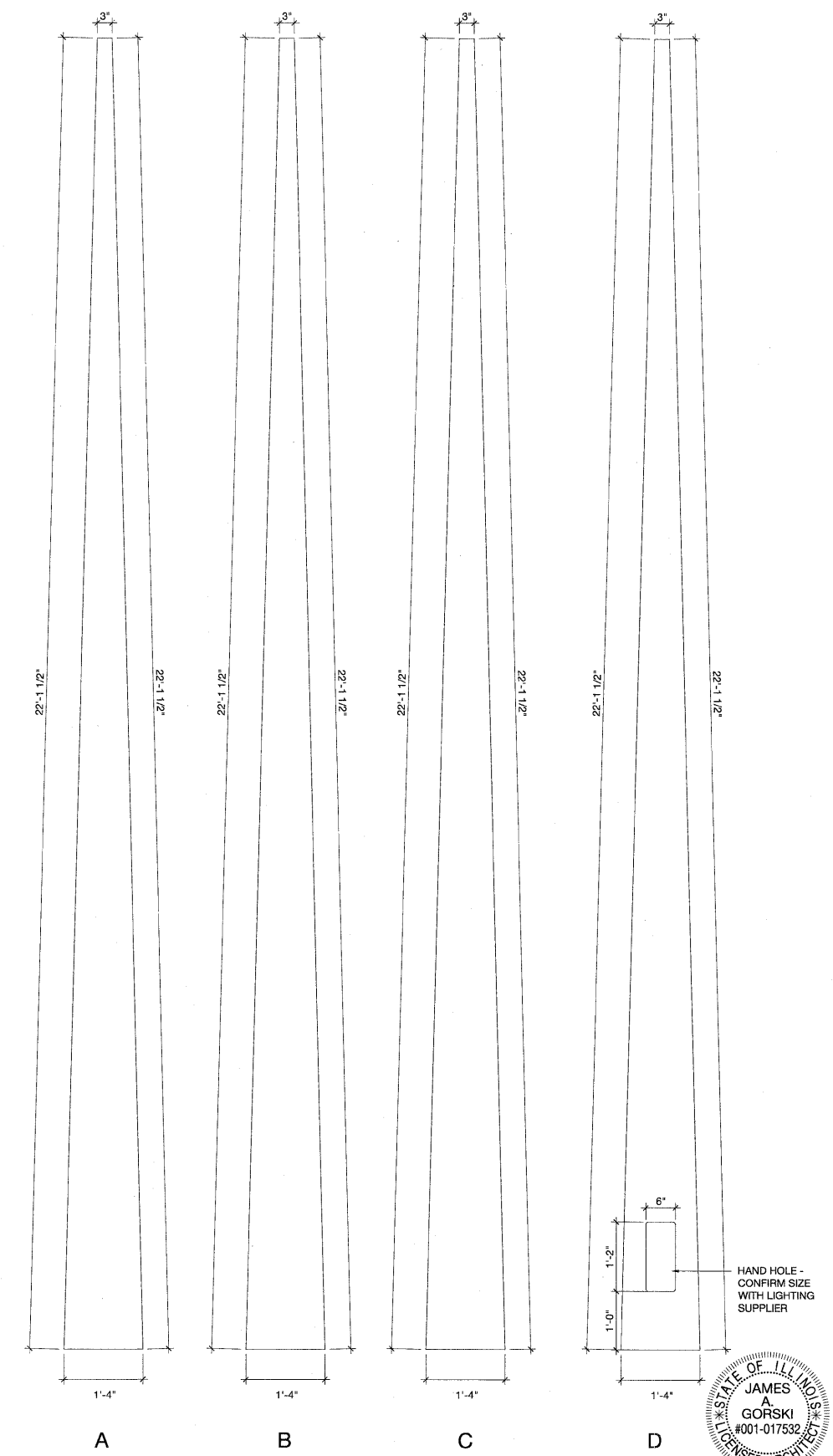
**D4 Section Detail**

SCALE: 3"=1'-0"



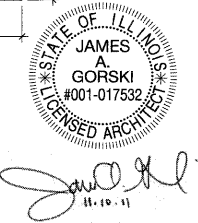
**B4 Typical Section**

SCALE: 3"=1'-0"



**F6 Elevations Each Side**

SCALE: 3/4"=1'-0"



**HANCOCK ENGINEERING**  
WOLFF LANDSCAPE ARCHITECTURE  
EDWARD WINDHORST JAMES GORSKI ARCHITECTS  
GOODFRIEND MAGRUDER STRUCTURE

DESIGNED	EW	REVISED	-
DRAWN	JG	REVISED	-
CHECKED	JG	REVISED	-
DATE	08/15/11	REVISED	-

**STATE OF ILLINOIS**  
**DEPARTMENT OF TRANSPORTATION**

**Medium Steel Obelisk**

SCALE:	SHEET NO.	OF	SHEETS	STA.	TO STA.
--------	-----------	----	--------	------	---------

F.A.U. RTE.	SECTION	COUNTY	TOTAL SHEETS	SHEET NO.
1026	10-00116-00-SW	COOK	40	23
FED. ROAD DIST. NO. 1		ILLINOIS	CONTRACT NO. 63654	
		FED. AID PROJECT M-TE-00D1(825)		

EHE PROJECT NO. 600-11-04602