

SURVEYED _____ CHECKED _____
 ALIGNED _____
 RT. OF WAY CHECKED _____
 DATE _____
 BY _____
 PLAN NO. _____
 NOTE BOOK NO. _____
 SURVEYED _____ CHECKED _____
 GRADES NOTIFIED _____
 DATE _____
 BY _____
 PROFILE NO. _____
 NOTE BOOK NO. _____
 SURVEYED _____ CHECKED _____
 GRADES NOTIFIED _____
 DATE _____
 BY _____

CHRISTOPHER B. BURKE ENGINEERING LTD.
 9575 West Higgins Road, Suite 600
 Chicago, IL 60630
 (847) 823-0500

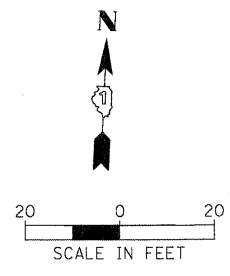
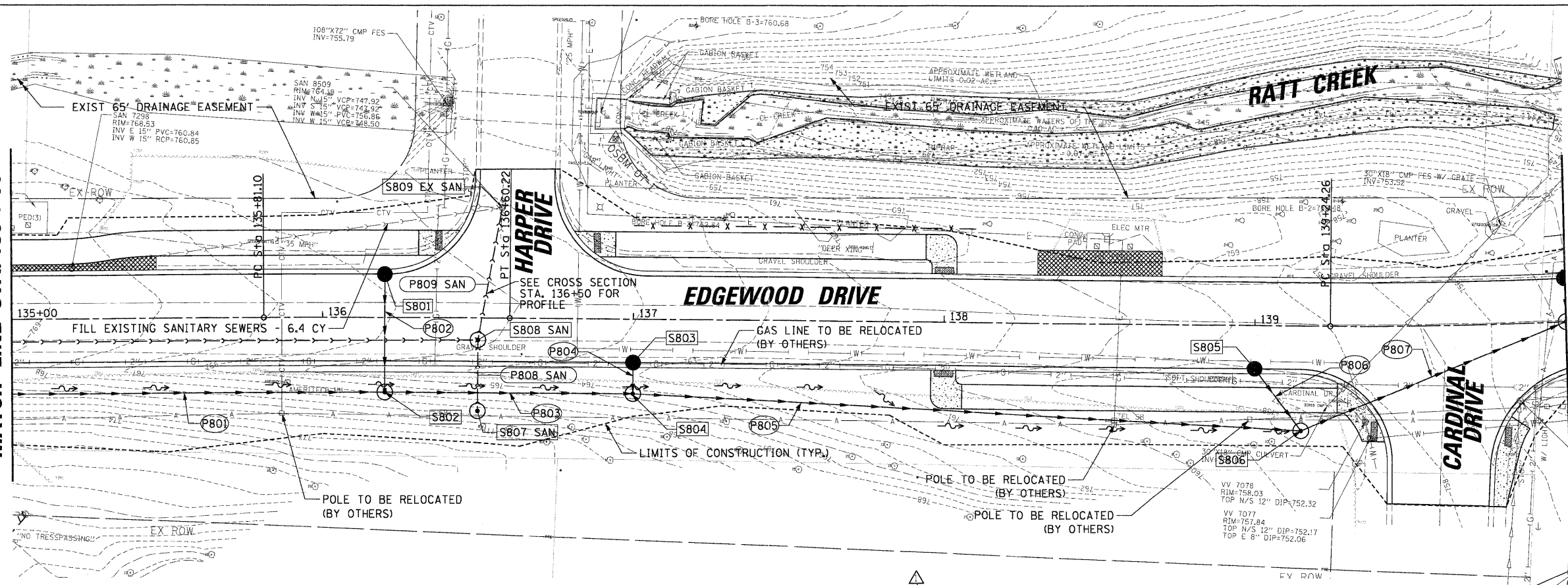
SPECIALTY ITEM	CODE	ITEM	UNIT	TOTAL QUANTITY	ROADWAY QUANTITY 0004	MULTI-USE PATH QUANTITY 0028	RATT CREEK BRIDGE QUANTITY 0014	RATT CREEK TRIBUTARY CULVERT QUANTITY 0011	NON PARTICIPATING ROADWAY QUANTITY
20100110		TREE REMOVAL (6 TO 15 UNITS DIAMETER)	UNIT	956	447	509			
20100210		TREE REMOVAL (OVER 15 UNITS DIAMETER)	UNIT	349	66	283			
20101000		TEMPORARY FENCE	FOOT	100	100				
20101100		TREE TRUNK PROTECTION	EACH	20	10	10			
20101200		TREE ROOT PRUNING	EACH	20	10	10			
20101300		TREE PRUNING (1 TO 10 INCH DIAMETER)	EACH	10	5	5			
20101350		TREE PRUNING (OVER 10 INCH DIAMETER)	EACH	10	5	5			
20200100		EARTH EXCAVATION	CU YD	3,346	1508	1838			
20201200		REMOVAL AND DISPOSAL OF UNSUITABLE MATERIAL	CU YD	7,438	3658	3353		425	
20300100		CHANNEL EXCAVATION	CU YD	300			200	100	
20400800		FURNISHED EXCAVATION	CU YD	3,970	1078	2892			
20700220		POROUS GRANULAR EMBANKMENT	CU YD	547				547	
20800150		TRENCH BACKFILL	CU YD	4,232	1879			245	2108
21001000		GEOTECHNICAL FABRIC FOR GROUND STABILIZATION	SQ YD	140				140	
21101625		TOPSOIL FURNISH AND PLACE, 6"	SO YD	11,114	5557	5557			
25000210		SEEDING, CLASS 2A	ACRE	1.1	0.7	0.4			
25000300		SEEDING, CLASS 3	ACRE	0.6	0.6				
25000400		NITROGEN FERTILIZER NUTRIENT	POUND	208	104	104			
25000500		PHOSPHORUS FERTILIZER NUTRIENT	POUND	208	104	104			
25000600		POTASSIUM FERTILIZER NUTRIENT	POUND	208	104	104			
25100630		EROSION CONTROL BLANKET	SQ YD	5,556	2778	2778			
25100635		HEAVY DUTY EROSION CONTROL BLANKET	SQ YD	5,558	2779	2779			
25200200		SUPPLEMENTAL WATERING	UNIT	35	35				
28000305		TEMPORARY DITCH CHECKS	FOOT	460	460				
28000315		AGGREGATE DITCH CHECKS	TON	15	15				
28000400		PERIMETER EROSION BARRIER	FOOT	9,240	4620	4620			
28100113		STONE RIPRAP, CLASS A7	SQ YD	172			97	75	
28200200		FILTER FABRIC	SQ YD	285			180	125	
30200650		PROCESSING MODIFIED SOIL 12"	SQ YD	8,792	8792				
30200950		PROCESSING MODIFIED SOIL 18"	SQ YD	3,000	3000				
30201600		FLY ASH	TON	800	800				
31101200		SUBBASE GRANULAR MATERIAL, TYPE B 4"	SQ YD	11,792	11792				
35101600		AGGREGATE BASE COURSE, TYPE B 4"	SQ YD	360	360				
35101800		AGGREGATE BASE COURSE, TYPE B 6"	SQ YD	4,027	582	3445			
40600100		BITUMINOUS MATERIALS (PRIME COAT)	GALLON	6,525	6525				
40600300		AGGREGATE (PRIME COAT)	TON	140	140				
40600625		LEVELING BINDER (MACHINE METHOD), N50	TON	188	188				
40600982		HOT-MIX ASPHALT SURFACE REMOVAL - BUTT JOINT	SQ YD	30	30				
40600990		TEMPORARY RAMP	SQ YD	30	30				
40603080		HOT-MIX ASPHALT BINDER COURSE, IL-19.0, N50	TON	4,569	4569				
40603335		HOT-MIX ASPHALT SURFACE COURSE, MIX "D", N50	TON	2,167	1773	394			
42001300		PROTECTIVE COAT	SQ YD	1,542	1542				
42001430		BRIDGE APPROACH PAVEMENT CONNECTOR (FLEXIBLE)	SQ YD	37	37.3				
42300200		PORTLAND CEMENT CONCRETE DRIVEWAY PAVEMENT 6 INCH	SQ YD	331	331				
42400100		PORTLAND CEMENT CONCRETE SIDEWALK 4 INCH	SQ FT	782		782			
42400800		DETECTABLE WARNINGS	SQ FT	94		94			
44000100		PAVEMENT REMOVAL	SQ YD	11,484	11484				
44000158		HOT-MIX ASPHALT SURFACE REMOVAL, 2 1/4"	SQ YD	3,308	3308				
44000200		DRIVEWAY PAVEMENT REMOVAL	SQ YD	928	928				
44000500		COMBINATION CURB AND GUTTER REMOVAL	FOOT	1,178	1178				
44000600		SIDEWALK REMOVAL	SQ FT	199	199				
44201749		CLASS D PATCHES, TYPE I, 9 INCH	SQ YD	85	85				
44201753		CLASS D PATCHES, TYPE II, 9 INCH	SQ YD	250	250				
50100100		REMOVAL OF EXISTING STRUCTURES	EACH	1				1	
50101500		REMOVAL OF EXISTING SUPERSTRUCTURE	EACH	1			1		
50102400		CONCRETE REMOVAL	CU YD	3			3		
50105220		PIPE CULVERT REMOVAL	FOOT	550	550				
50200100		STRUCTURE EXCAVATION	CU YD	1,211			15	1196	
50300225		CONCRETE STRUCTURES	CU YD	289			24.5	244.5	
50300255		CONCRETE SUPERSTRUCTURES	CU YD	147			147.4		
50300260		BRIDGE DECK GROOVING	SQ YD	15			15		
50300285		FORM LINER TEXTURED SURFACE	SQ FT	3,370				3370	
50300300		PROTECTIVE COAT	SQ YD	375			375		
50500105		FURNISHING AND ERECTING STRUCTURAL STEEL	L SUM	1			1		
50800205		REINFORCEMENT BARS, EPOXY COATED	POUND	76,840			35610	41030	
50800515		BAR SPICERS	EACH	70			70		
51500100		NAME PLATES	EACH	1			1		
54003000		CONCRETE BOX CULVERTS	CU YD	108				108.3	
54011206		PRECAST CONCRETE BOX CULVERTS 12' X 6'	FOOT	54				54	
54213863		PRECAST REINFORCED CONCRETE FLARED END SECTIONS 18"	EACH	1	1				
550A0050		STORM SEWERS, CLASS A, TYPE 1 12"	FOOT	81	81				
550A0090		STORM SEWERS, CLASS A, TYPE 1 18"	FOOT	8	8				
550A0120		STORM SEWERS, CLASS A, TYPE 1 24"	FOOT	127	127				
550A0140		STORM SEWERS, CLASS A, TYPE 1 30"	FOOT	395	395				
550A0340		STORM SEWERS, CLASS A, TYPE 2 12"	FOOT	1,287	1287				
550A0380		STORM SEWERS, CLASS A, TYPE 2 18"	FOOT	328	328				
550A0410		STORM SEWERS, CLASS A, TYPE 2 24"	FOOT	152	152				
550A0430		STORM SEWERS, CLASS A, TYPE 2 30"	FOOT	1,208	1208				
550A0450		STORM SEWERS, CLASS A, TYPE 2 36"	FOOT	22	22				

SPECIALTY ITEM	CODE	ITEM	UNIT	TOTAL QUANTITY	ROADWAY QUANTITY 0004	MULTI-USE PATH QUANTITY 0028	RATT CREEK BRIDGE QUANTITY 0014	RATT CREEK TRIBUTARY CULVERT QUANTITY 0011	NON PARTICIPATING ROADWAY QUANTITY
550A0500		STORM SEWERS, CLASS A TYPE 2 60"	FOOT	153	153				
550A0540		STORM SEWERS, CLASS A, TYPE 2 84"	FOOT	206	206				
550A0780		STORM SEWERS, CLASS A, TYPE 3 48"	FOOT	209	209				
59100100		GEOCOMPOSITE WALL DRAIN	SQ YD	231				231	
60107600		PIPE UNDERDRAINS 4"	FOOT	800	800				
60224446		MANHOLES, TYPE A, 7'-DIAMETER, TYPE 1 FRAME, CLOSED LID	EACH	1	1				
60500040		REMOVING MANHOLES	EACH	4					4
60500050		REMOVING CATCH BASINS	EACH	2	2				
60500060		REMOVING INLETS	EACH	1	1				
60604100		COMBINATION CONCRETE CURB AND GUTTER, TYPE B-6.12 (MODIFIED)	FOOT	8,173	8173				
60609200		COMBINATION CONCRETE CURB AND GUTTER, TYPE M-6.12	FOOT	165	165				
63000001		STEEL PLATE BEAM GUARD RAIL, TYPE A, 6 FOOT POSTS	FOOT	150			50	100	
63100045		TRAFFIC BARRIER TERMINAL, TYPE 2	EACH	4			3	1	
63100070		TRAFFIC BARRIER TERMINAL, TYPE 5	EACH	2			2		
63100085		TRAFFIC BARRIER TERMINAL, TYPE 6	EACH	2			2		
63100167		TRAFFIC BARRIER TERMINAL, TYPE 1 (SPECIAL) TANGENT	EACH	2			1	1	
63200310		GUARDRAIL REMOVAL	FOOT	312	312				
63300725		STEEL PLATE BEAM GUARDRAIL (SHORT RADIUS)	FOOT	13			13		
64100120		SIGHT SCREEN (WOODEN FENCE), TYPE P 8'	FOOT	200	200				
67100100		MOBILIZATION	L SUM	1	0.58	0.16	0.1	0.16	
70106800		CHANGEABLE MESSAGE SIGN	CAL MO	14	14				
72000100		SIGN PANEL - TYPE 1	SQ FT	60	7.5	52.5			
72800100		TELESCOPING STEEL SIGN SUPPORT	FOOT	46	15	31			
78000100		THERMOPLASTIC PAVEMENT MARKING - LETTERS AND SYMBOLS	SQ FT	73	73				
78000200		THERMOPLASTIC PAVEMENT MARKING - LINE 4"	FOOT	9,625	9625				
78000400		THERMOPLASTIC PAVEMENT MARKING - LINE 6"	FOOT	330	330				
78000600		THERMOPLASTIC PAVEMENT MARKING - LINE 12"	FOOT	132	132				
78000650		THERMOPLASTIC PAVEMENT MARKING - LINE 24"	FOOT	136		136			
78200410		GUARDRAIL MARKERS, TYPE A	EACH	7	7				
78201000		TERMINAL MARKER - DIRECT APPLIED	EACH	2			1	1	
88600600		DETECTOR LOOP REPLACEMENT	FOOT	144	144				
A2000120		TREE, ACER X FREEMANNII AUTUMN BLAZE (AUTUMN BLAZE FREEMAN MAPLE), 2-1/2" CALIPER, BALLED AND BURLAPPED	EACH	24	12	12			
A2001220		TREE, ACER RUBRUM RED SUNSET (RED SUNSET RED MAPLE), 2-1/2" CALIPER, BALLED AND BURLAPPED	EACH	28	13	15			
A2004568		TREE, GINKGO BILOBA MAGYAR ARISTOCRAT (MAGYAR ARISTOCRAT GINKGO), TREE FORM, 3" CALIPER BALLED AND BURLAPPED	EACH	20	5	15			
A2007120		TREE, QUERCUS RUBRA (RED OAK), 2-1/2" CALIPER, BALLED AND BURLAPPED	EACH	39	12	27			
A2007720		TREE, TAXODIUM DISTICHUM SHAWNEE BRAVE (SHAWNEE BRAVE BALD CYPRESS), 2-1/2" CALIPER, BALLED AND BURLAPPED	EACH	33	8	25			
A2007924		TREE, TILIA AMERICANA REDMOND (REDMOND AMERICAN LINDEN), 3" CALIPER, BALLED AND BURLAPPED	EACH	6		6			
K1005421		SEEDING (SPECIAL)	ACRE	1.0		1.0			
X0327291		FILL EXISTING SANITARY SEWERS	CU YD	45					45
X0325714		FLASHING BEACON, POST MOUNTED, SOLAR POWERED INSTALLATION	EACH	2		2			
X0326358		STORM WATER TREATMENT SYSTEM	EACH	2	2				
X0326806		WASHOUT BASIN	L SUM	1	1				
X0326862		STRUCTURES TO BE ADJUSTED	EACH	13	13				
X0426200		DEWATERING	L SUM	1			0.5	0.5	
X0540000		BRICK PAVERS	SQ FT	746	746				
X2070304		POROUS GRANULAR EMBANKMENT, SPECIAL	CU YD	221			15	206	
X2800500		INLET PROTECTION, SPECIAL	EACH	49	49				
X2800510		INLET FILTER CLEANING	EACH	49	49				
X4021000		TEMPORARY ACCESS (PRIVATE ENTRANCE)	EACH	7	7				
X4023000		TEMPORARY ACCESS (ROAD)	EACH	4	4				
X6020094		MANHOLES, TYPE A, 6'-DIAMETER, TYPE 1 FRAME, CLOSED LID, RESTRICTOR PLATE	EACH	1	1				
X6020099		MANHOLES, TYPE A, 9'-DIAMETER WITH SPECIAL FRAME AND GRATE	EACH	1	1				
X6020102		MANHOLES, TYPE A, 9'-DIAMETER, TYPE 1 FRAME, CLOSED LID, RESTRICTOR PLATE	EACH	1	1				
X6020294		MANHOLES, TYPE A, 7'-DIAMETER, TYPE 1 FRAME, CLOSED LID, RESTRICTOR PLATE	EACH	1	1				
X6022230		MANHOLES, TYPE A, 4'-DIAMETER WITH SPECIAL FRAME AND GRATE	EACH	8	8				
X6022712		CATCH BASINS, TYPE A, 4'-DIAMETER, WITH SPECIAL FRAME AND GRATE	EACH	27	27				
X6022930		MANHOLES, TYPE A, 5'-DIAMETER, WITH SPECIAL FRAME AND GRATE	EACH	10	10				
X6023508		INLETS, TYPE A, WITH SPECIAL FRAME AND GRATE	EACH	24	24				
X6024090		MANHOLES, TYPE A, 6'-DIAMETER, WITH SPECIAL FRAME AND GRATE	EACH	1	1				
X6024503		INLETS TO BE ADJUSTED WITH NEW FRAME AND GRATE (SPECIAL)	EACH	1	1				
X6026058		SANITARY MANHOLES WITH SPECIAL FRAME AND CLOSED LID	EACH	7					7
X6650206		WOVEN WIRE FENCE TO BE REMOVED AND RE-ERECTED	FOOT	20	20				
X7010216		TRAFFIC CONTROL AND PROTECTION, (SPECIAL)	L SUM	1	0.25	0.25	0.25	0.25	
Z0001050		AGGREGATE SUBGRADE 12"	SQ YD	8,156	8156				
Z0013797		STABILIZED CONSTRUCTION ENTRANCE	SQ YD	560	560				
Z0013798		CONSTRUCTION LAYOUT	L SUM	1	0.4	0.4	0.1	0.1	
Z0022800		FENCE REMOVAL	FOOT	250	250				
Z0042002		POROUS GRANULAR EMBANKMENT, SUBGRADE	CU YD	1,000	1000				
Z0056900		SANITARY SEWER 8"	FOOT	898					898
Z0058300		SANITARY SEWER, TYPE 1 8"	FOOT	146					146
Z0067700		STEEL CASINGS 20"	FOOT	26				</	

DATE: _____ BY: _____
 SURVEYED _____ ALIGNED _____ CHECKED _____
 PLAN _____ NOTE BOOK _____
 NO. _____
CHRISTOPHER B. BURKE ENGINEERING LTD.
 9575 West Higgins Road, Suite 600
 Rosemont, Illinois 60018
 (847) 852-0300
 PROFILE SURVEYED _____
 GRADES CHECKED _____
 NOTE BOOK _____
 NO. _____
 STRUCTURE NOTATIONS: OTHER

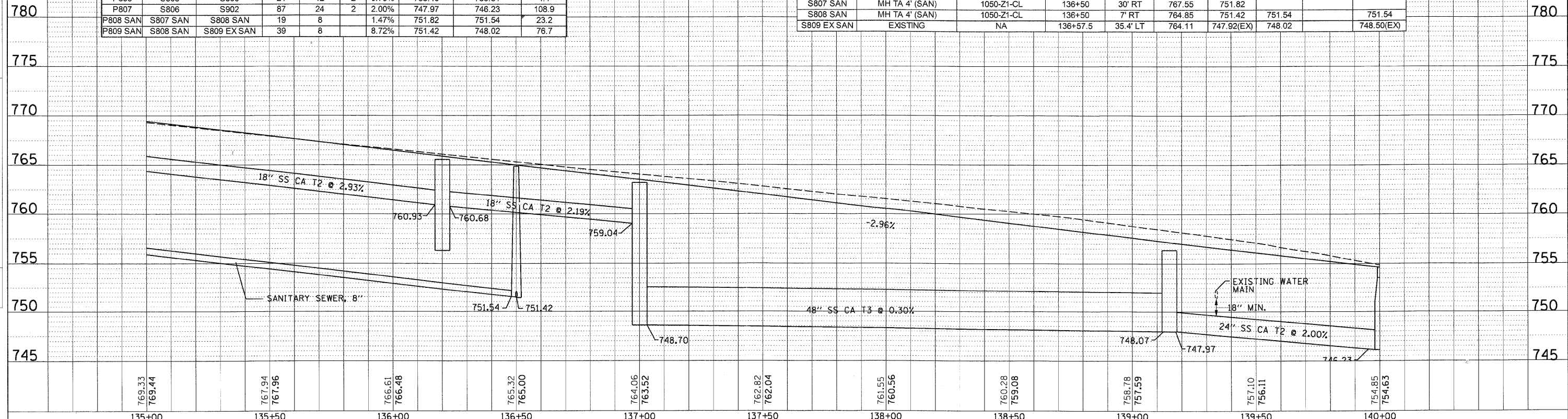
MATCH LINE STA. 135+00

MATCH LINE STA. 140+00

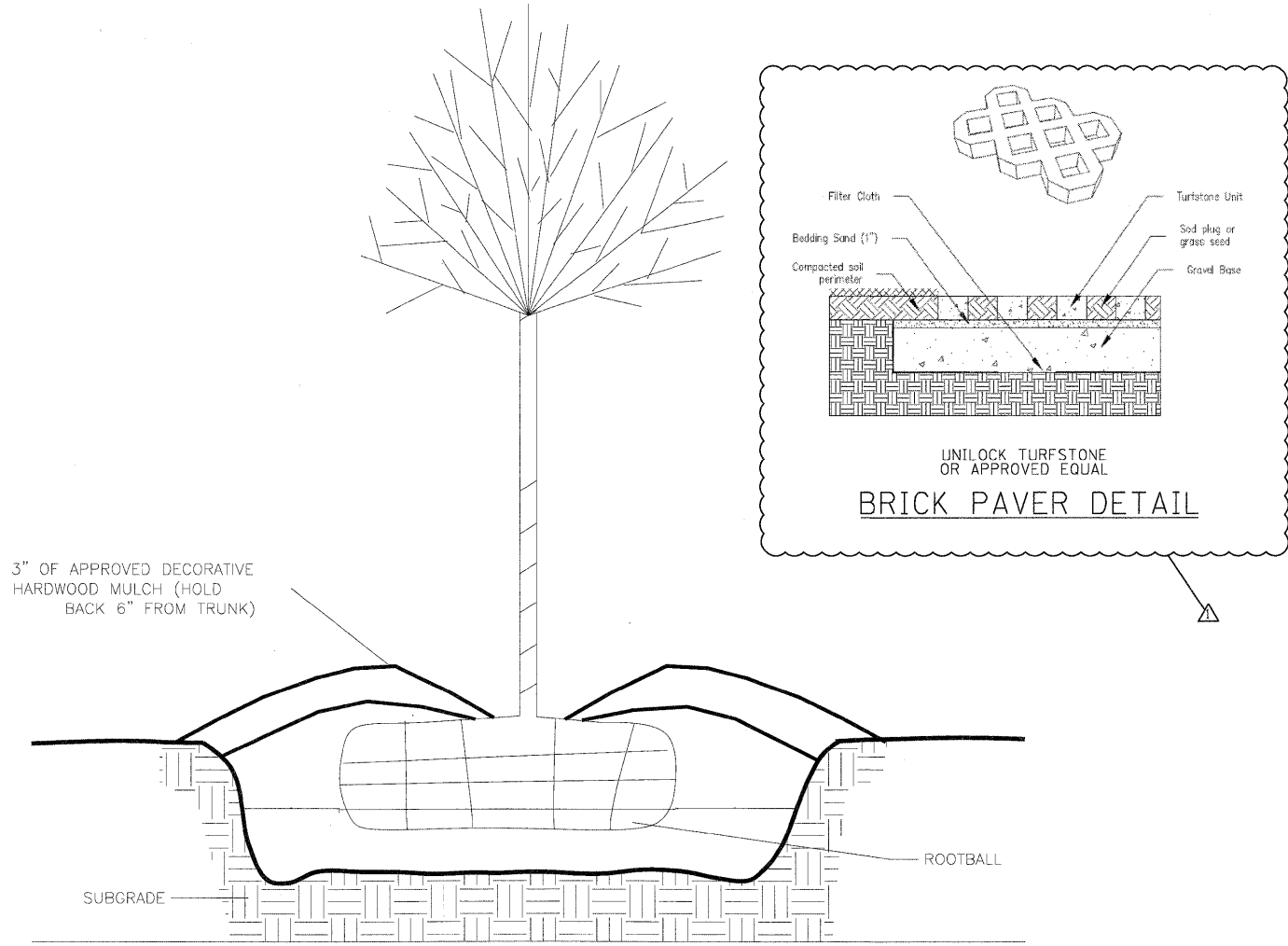


NO	UPSTREAM STRUCTURE	DOWNSTREAM STRUCTURE	LENGTH (FEET)	SIZE (INCHES)	TYPE	SLOPE (%)	UPSTREAM INVERT	DOWNSTREAM INVERT	TRENCH BACKFILL (CU. YD.)
P801	S707	S802	151	18	2	2.93%	765.35	760.93	
P802	S801	S802	35	12	2	0.70%	761.76	761.52	9.5
P803	S802	S804	75	18	2	2.19%	760.68	759.04	
P804	S803	S804	3	12	1	0.70%	759.39	759.34	0.7
P805	S804	S806	209	48	3	0.30%	748.70	748.07	265.3
P806	S805	S806	21	12	2	0.70%	753.46	753.31	4.1
P807	S806	S902	87	24	2	2.00%	747.97	746.23	108.9
P808 SAN	S807 SAN	S808 SAN	19	8		1.47%	751.82	751.54	23.2
P809 SAN	S808 SAN	S809 EX SAN	39	8		8.72%	751.42	748.02	76.7

NO.	STRUCTURE	FRAME TYPE	STATION	OFFSET	RIM ELEVATION	INVERT ELEVATIONS			
						N	S	E	W
S801	CB TA 4'	7010-T1-M4	136+20	14' LT	765.61		761.76		
S802	SW TREAT SYS	SPECIAL	136+20	24' RT	766.05	761.52		760.68	760.93
S803	CB TA 4'	7010-T1-M4	137+00	14' RT	763.24		759.39		
S804	MH TA 6'	6508	137+00	24' RT	763.2	759.34		748.70	759.04
S805	CB TA 4'	7010-T1-M4	139+00	14' RT	757.31		753.46		
S806	MH TA 6' (RESTRICTOR)	6508 & 1050-Z1-CL	139+15	33.83' RT	756.36	753.31		747.97	748.07
S807 SAN	MH TA 4' (SAN)	1050-Z1-CL	136+50	30' RT	767.55	751.82			
S808 SAN	MH TA 4' (SAN)	1050-Z1-CL	136+50	7' RT	764.85	751.42	751.54		751.54
S809 EX SAN	EXISTING	NA	136+57.5	35.4' LT	764.11	747.92(EX)	748.02		748.50(EX)

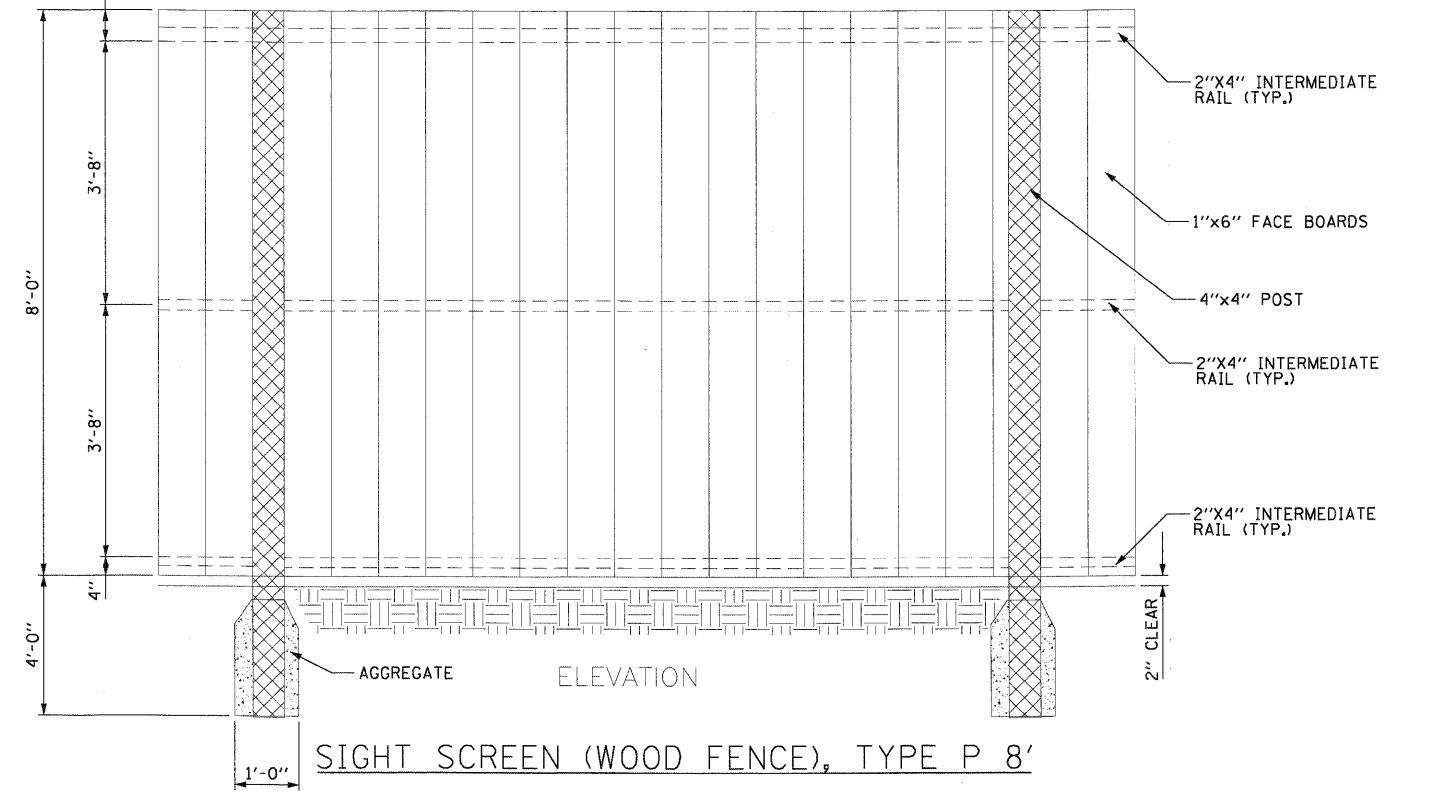
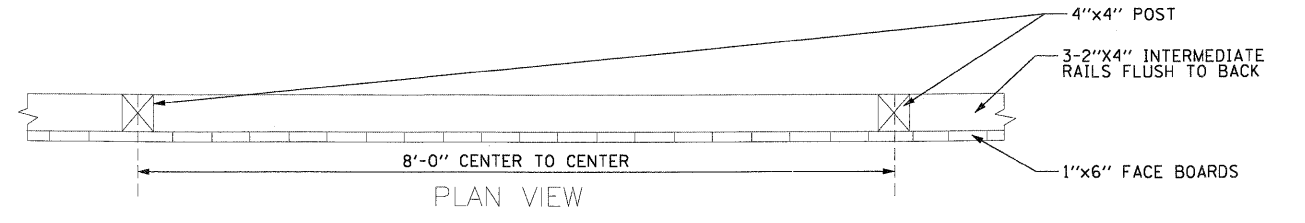
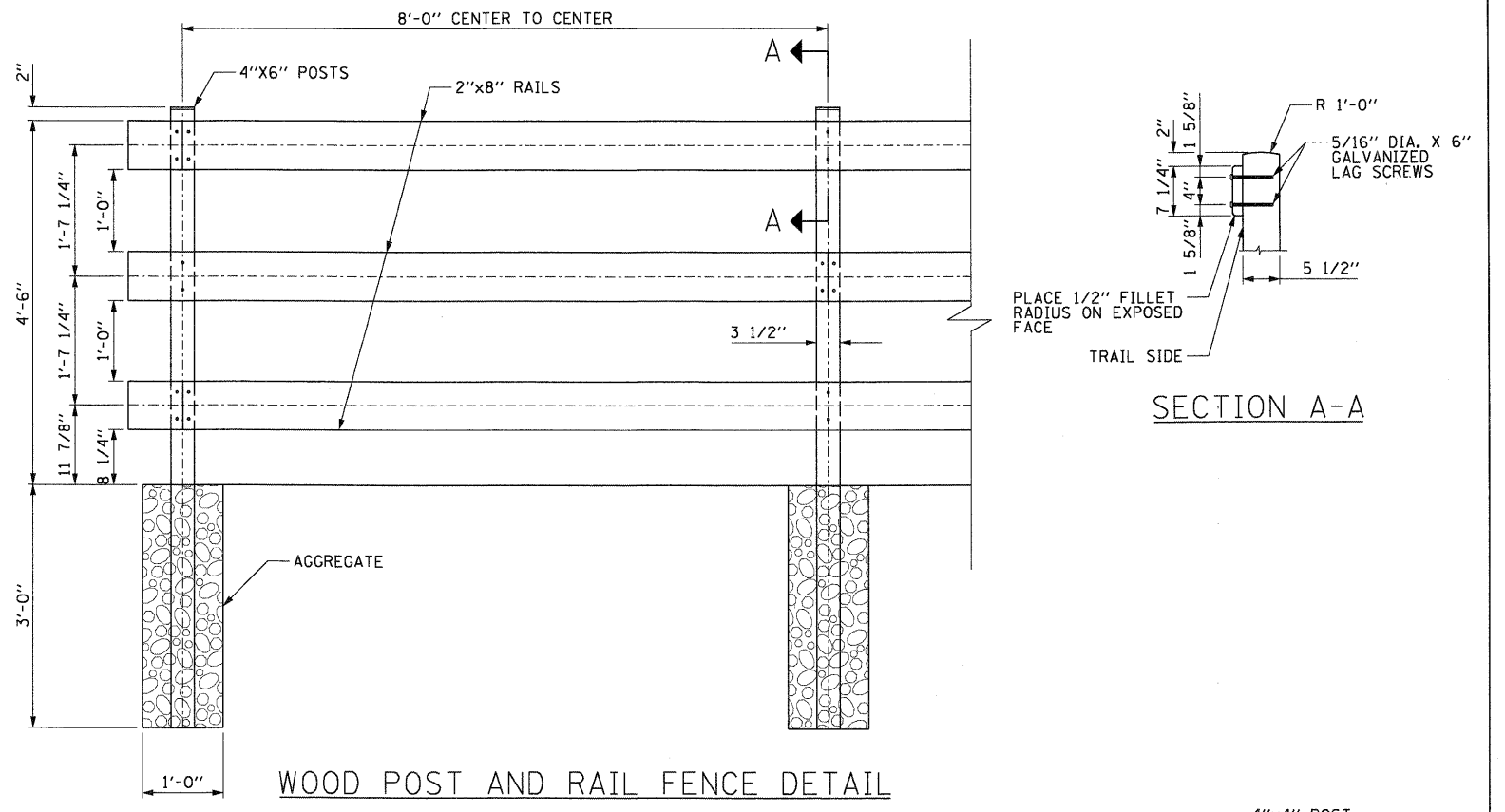


DATE _____ BY _____
 SURVEYED _____ GRADES CHECKED _____
 ALIGNED _____ CHECKED _____
 PAVED _____ FILE NAME _____
 PLAN NO. _____
CHRISTOPHER B. BURKE ENGINEERING LTD.
 9575 West Higgins Road, Suite 600
 Chicago, Illinois 60638
 (847) 823-0500
 CB
 DATE _____ BY _____
 SURVEYED _____ GRADES CHECKED _____
 ALIGNED _____ CHECKED _____
 PAVED _____ FILE NAME _____
 PROFILE NO. _____



- NOTES:
1. ALL PARKWAYS WITHIN THE DEDICATED STREET AREA OR OTHER PUBLIC USE AREAS SHALL BE GRADED WITH SIX INCHES (6") OF TOPSOIL AND SEEDED OR SODDED IN AN APPROVED MANNER.
 2. PARKWAY TREES HAVING A TRUNK DIAMETER (MEASURED TWELVE INCHES ABOVE THE GROUND) OF NOT LESS THAN THREE (3") INCHES SHALL BE PLANTED BY THE DEVELOPER THROUGHOUT THE ENTIRE SUBDIVISION. SUCH TREES SHALL BE PLANTED IN THE PARKWAYS, NOT LESS THAN FOUR (4') FEET FROM ALL CURBS, CURB LINES AND SIDEWALKS. PARKWAYS, AS MEASURED FROM THE BACK OF THE CURB TO THE CLOSEST EDGE OF THE SIDEWALK SMALLER THAN 4 FEET SHALL NOT BE SUITABLE FOR PARKWAY TREES UNLESS APPROVED BY THE PARKS & FORESTRY SUPT.
 3. A LIST OF THE APPROVED TREE SPECIES IS AVAILABLE FROM THE PUBLIC WORKS DEPARTMENT, PARKS & FORESTRY DIVISION. TREES FROM THIS LIST ARE THE ONLY SPECIES APPROVED FOR PLANTING WITHIN VILLAGE OWNED RIGHTS-OF-WAY AND ON OTHER VILLAGE OWNED PROPERTY, UNLESS APPROVED BY THE VILLAGE ARBORIST.
 4. ON ALL PLANTING PROJECTS THERE WILL BE NO MORE THAN TWENTY (20%) PERCENT OF ANY GENUS AND NO MORE THAN TEN (10%) PERCENT OF ANY SPECIES.
 5. TREES SHALL BE BALLED AND BURLAPED AND GROWN ACCORDING TO GOOD NURSERY PRACTICES AS SPECIFIED IN THE ARBORICULTURAL SPECIFICATIONS MANUAL. SYNTHETIC BURLAP AND ROPE PRODUCTS SHALL NOT BE USED.
 6. ALL TREES DELIVERED WITH BASKETS SHALL HAVE THE BASKETS REMOVED FROM THE TOP 1/3 OF THE ROOT BALL PRIOR TO PLANTING.
 7. ALL TREES SHALL BE PLANTED IN A PLUMB POSITION, WITH THE BASAL FLARE RESIDING AT GRADE OR SLIGHTLY ABOVE. STAKING OF THE TREES SHALL ONLY BE PERFORMED IF NECESSARY. STAKES WILL REMAIN ON THE SPECIMENS FOR NO LONGER THAN ONE (1) YEAR.
 8. NO SOIL AMENDMENTS SHALL BE ALLOWED.
 9. 3" OF APPROVED DECORATIVE MULCH WILL BE INSTALLED AT THE TIME OF PLANTING (OVER THE ENTIRE ROOT ZONE)
 10. SEE TREE ORDINANCE CHAPTER 5 SECTION 15 FOR ALL DETAILS RELATIVE TO TREE INSTALLATIONS.

TREE PLANTING DETAIL



FILE NAME = N:\ALGONGUIN\078273.00026\Civil\DET.078273.3.SHT	USER NAME = mworman	DESIGNED -	REVISED - ADDENDUM Δ - 12/23/2011	STATE OF ILLINOIS DEPARTMENT OF TRANSPORTATION	EDGEWOOD DRIVE IMPROVEMENTS CONSTRUCTION DETAILS	F.A.U. RTE. 4010	SECTION 09-00078-00-WR	COUNTY McHENRY	TOTAL SHEETS 128	SHEET NO. 51
PLOT SCALE = 10'	CHECKED -	REVISED -	CONTRACT NO. 63655			ILLINOIS FED. AID PROJECT				
PLOT DATE = 12/23/2011	DATE -	REVISED -	SCALE:			SHEET NO. OF SHEETS STA. TO STA.				