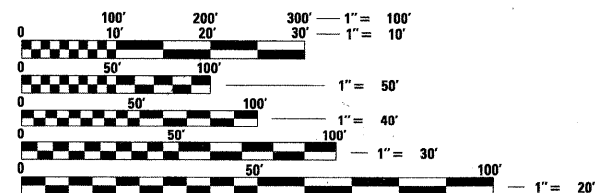


INDEX OF SHEETS

SHEET No.	DESCRIPTION
1	COVER SHEET
2	GENERAL NOTES
3	SUMMARY OF QUANTITIES
4-5	SCHEDULE OF QUANTITIES
6-8	TYPICAL SECTIONS
9-11	ALIGNMENT, TIES AND BENCHMARKS
12	MAINTENANCE OF TRAFFIC
13-15	DETOUR PLAN
16-21	EXISTING CONDITIONS AND REMOVAL PLANS
22-32	ROADWAY PLAN AND PROFILE
33-42	DRAINAGE AND UTILITY PLAN AND PROFILE
43-44	EROSION AND SEDIMENT CONTROL PLANS
45-46	EROSION AND SEDIMENT CONTROL DETAILS
47-48	PAVEMENT MARKING AND LANDSCAPING PLANS
49-51	CONSTRUCTION DETAILS
52-58	IDOT D1 STANDARD DRAWINGS
59-79	PROPOSED BRIDGE STRUCTURAL DETAILS
80-85	PROPOSED CULVERT STRUCTURAL DETAILS
86-95	PROPOSED RETAINING WALL STRUCTURAL DETAILS
96-128	CROSS SECTIONS
STATE STANDARDS	
STD 000001-06	STANDARD SYMBOLS, ABBREVIATIONS AND PATTERNS
STD 420401-08	BRIDGE APPROACH PAVEMENT CONNECTOR
STD 424001-06	CURB RAMPS FOR SIDEWALKS
STD 424006	DIAGONAL CURB RAMPS FOR SIDEWALKS
STD 424011	CORNER PARALLEL CURB RAMPS FOR SIDEWALKS
STD 424016	MID-BLOCK CURB RAMPS FOR SIDEWALKS
STD 424021	DEPRESSED CORNER FOR SIDEWALKS
STD 442201-03	CLASS C AND D PATCHES
STD 542301-03	PRECAST REINFORCED CONCRETE FLARED END SECTION
STD 542311-02	GRATING FOR CONCRETE FLARED END SECTION (FOR 24" THRU 54" PIPE)
STD 602001-02	CATCH BASIN TYPE A
STD 602301-03	INLET - TYPE A
STD 602401-03	MANHOLE TYPE A
STD 602411-03	MANHOLE TYPE A 7' DIAMETER
STD 602421-03	MANHOLE TYPE A 9' DIAMETER
STD 602601-02	PRECAST REINFORCED CONCRETE FLAT SLAB TOP
STD 602701-02	MANHOLE STEPS
STD 606001-04	CONCRETE CURB TYPE B AND COMBINATION CONCRETE CURB AND GUTTER
STD 630001-10	STEEL PLATE BEAM GUARDRAIL
STD 631011-08	TRAFFIC BARRIER TERMINAL TYPE 2
STD 631031-09	TRAFFIC BARRIER TERMINAL TYPE 6
STD 635006-03	REFLECTOR AND TERMINAL PLACEMENT
STD 635011-02	REFLECTOR MARKER AND MOUNTING DETAILS
STD 701036-03	OFF-RD OPERATIONS, 2L, 2W, 15' TO 24" FROM EDGE PAVEMENT EDGE
STD 701011-02	OFF-RD MOVING OPERATIONS, 2L, 2W, DAY ONLY
STD 701301-04	LANE CLOSURE, 2L, 2W, SHORT TIME OPERATIONS
STD 701311-03	LANE CLOSURE, 2L, 2W, MOVING OPERATIONS DAY ONLY
STD 701501-06	URBAN LANE CLOSURE, 2L, 2W, UNDIVIDED
STD 701801-05	LANE CLOSURE MULTILANE 1W OR 2W CROSSWALK OR SIDEWALK CLOSURE
STD 701901-02	TRAFFIC CONTROL DEVICES
STD 720001-01	SIGN PANEL MOUNTING DETAILS
STD 720006-03	SIGN PANEL ERECTION DETAILS
STD 728001-01	TELESCOPING STEEL SIGN SUPPORT
STD 878001-09	CONCRETE FOUNDATION DETAILS
STD 886001-01	DETECTOR LOOP INSTALLATIONS
STD 886006-01	TYPICAL LAYOUT FOR DETECTOR LOOPS

PROJECT IS LOCATED IN THE VILLAGE OF ALGONQUIN

TRAFFIC DATA:
 2009 ADT = 6,500 VEHICLES
 2030 ADT = 7,000 VEHICLES
 POSTED SPEED LIMIT = 35 MPH
 FUNCTIONAL CLASSIFICATION = COLLECTOR



FULL SIZE PLANS HAVE BEEN PREPARED USING STANDARD ENGINEERING SCALES. REDUCED SIZED PLANS WILL NOT CONFORM TO STANDARD SCALES. IN MAKING MEASUREMENTS ON REDUCED PLANS, THE ABOVE SCALES MAY BE USED.

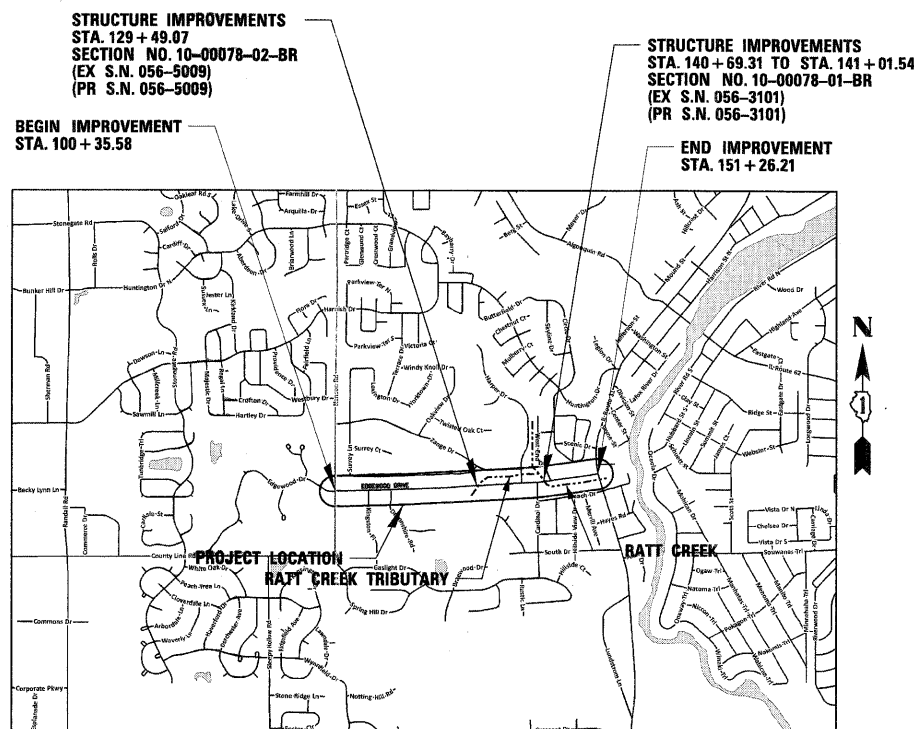
J.U.L.I.E.
 JOINT UTILITY LOCATION INFORMATION FOR EXCAVATION
 1-800-892-0123
 OR 811

CONTRACT NO. 63655

**STATE OF ILLINOIS
 DEPARTMENT OF TRANSPORTATION
 DIVISION OF HIGHWAYS**

**PLANS FOR PROPOSED
 FEDERAL AID HIGHWAY**

**F.A.U. 4010 (EDGEWOOD DRIVE)
 FROM HANSON ROAD (F.A.U.4011) TO IL ROUTE 31 (F.A.U. 3887)
 ROADWAY RECONSTRUCTION AND WIDENING
 SECTION NO. 09-00078-00-WR
 PROJECT NO. CMM-M-BRM-9003(555)
 JOB NO. C-91-303-10
 McHENRY COUNTY**



SEC 9 T43N R 8E SCALE - 1"=2,000' ALGONQUIN TOWNSHIP SEC 33 T43N R 8E
 GROSS LENGTH = 5,090.63 FT. = 0.96 MILE
 NET LENGTH = 5,090.63 FT. = 0.96 MILE

F.A.U. RTE.	SECTION	COUNTY	TOTAL SHEETS	SHEET NO.
4010	09-00078-00-WR	McHENRY	128	1



**STATE OF ILLINOIS
 DEPARTMENT OF TRANSPORTATION
 DIVISION OF HIGHWAYS**

APPROVED Nov 9 2011
 [Signature]
 DIRECTOR OF PUBLIC WORKS, VILLAGE OF ALGONQUIN

PASSED November 10, 2011
 [Signature]
 DISTRICT ENGINEER OF LOCAL ROADS AND STREETS

RELEASING FOR BID BASED ON LIMITED REVIEW NOVEMBER 10, 2011
 [Signature]
 DEPUTY DIRECTOR OF HIGHWAYS, REGION ONE ENGINEER



Signed [Signature]
 Michael E. Kerr, P.E., Ill. Lic. No. 062-046642 Expires 11-30-2011
 Date 11/9/11

**PRINTED BY THE AUTHORITY
 OF THE STATE OF ILLINOIS**



PROGRAM AND OFFICE ENGINEER: CHARLES F. RIDDLER, P.E. (847) 705-4406 SCHAUMBURG, IL