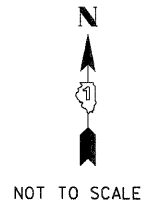
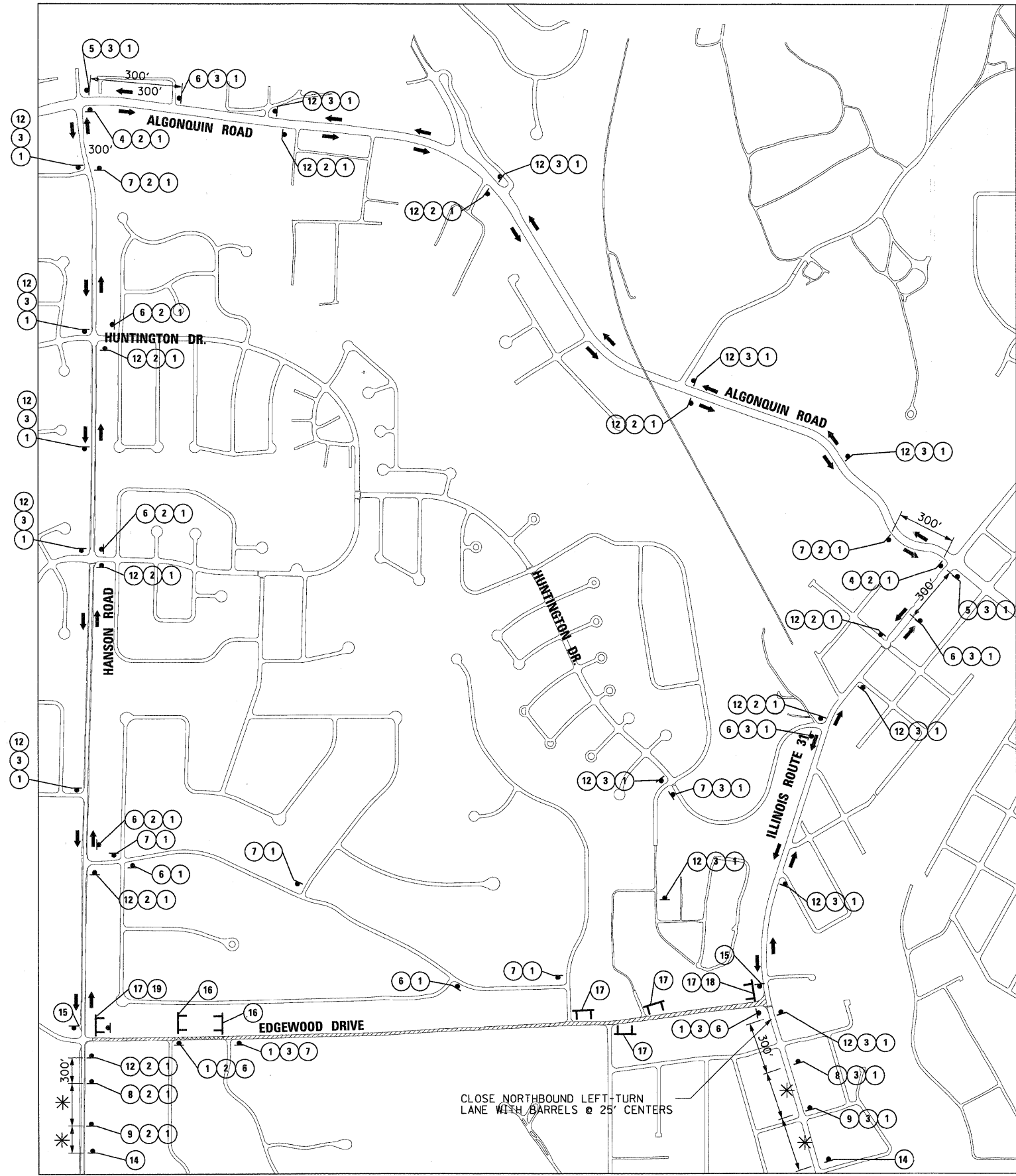


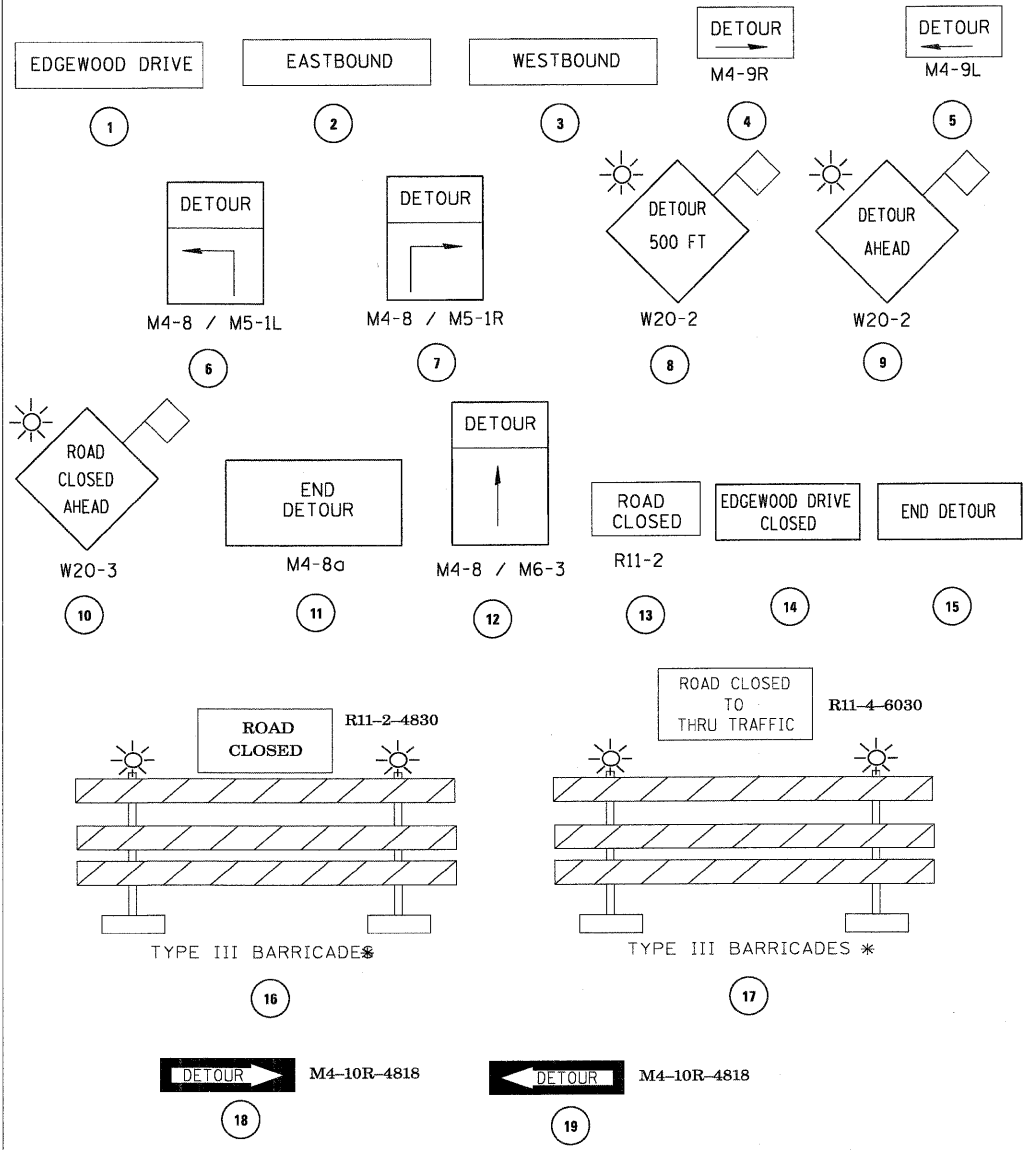
SURVEYED BY: DATE: _____
 NOTE BOOK NO.: _____
 ALIGNED CHECKED: _____
 PART OF WAY CHECKED: _____
 AND FILE NAME: _____
 PROFILE SURVEYED BY: DATE: _____
 NOTE BOOK NO.: _____
 GRADES CHECKED: _____
 (S.M. NOTED) _____
 STRUCTURE NOTATIONS CHECKED: _____

CHRISTOPHER B. BURKE ENGINEERING LTD.
 5575 West Higgins Road, Suite 600
 Rosemont, Illinois 60018
 (847) 823-0500



- LEGEND**
- TYPE III BARRICADES (PER IDOT STANDARD 702001)
 - DETOURED THROUGH TRAFFIC
 - DETOUR SIGN ASSEMBLY
 - 500' SPACING BETWEEN SIGNS
 - ROAD CLOSED (LOCAL ACCESS ONLY)
 - ROAD CLOSED

SIGN LEGEND



FILE NAME = N:\ALGONQUIN\070273.00\026\Civil\DOTR_070273_2.SHT	USER NAME = mworman	DESIGNED -	REVISED -	STATE OF ILLINOIS DEPARTMENT OF TRANSPORTATION	EDGEWOOD DRIVE IMPROVEMENTS DETOUR PLAN STAGE II			F.A.U. RTE. 4010	SECTION 09-00078-00-WR	COUNTY McHENRY	TOTAL SHEETS 128	SHEET NO. 14
PLOT SCALE = 20'	PLOT DATE = 1/15/2011	DRAWN -	REVISED -		SCALE:	SHEET NO. OF SHEETS STA. TO STA.	CONTRACT NO. 63655					
CHECKED -	DATE -	REVISIONS	REVISIONS		ILLINOIS FED. AID PROJECT							
DATE -	DATE -	REVISIONS	REVISIONS									