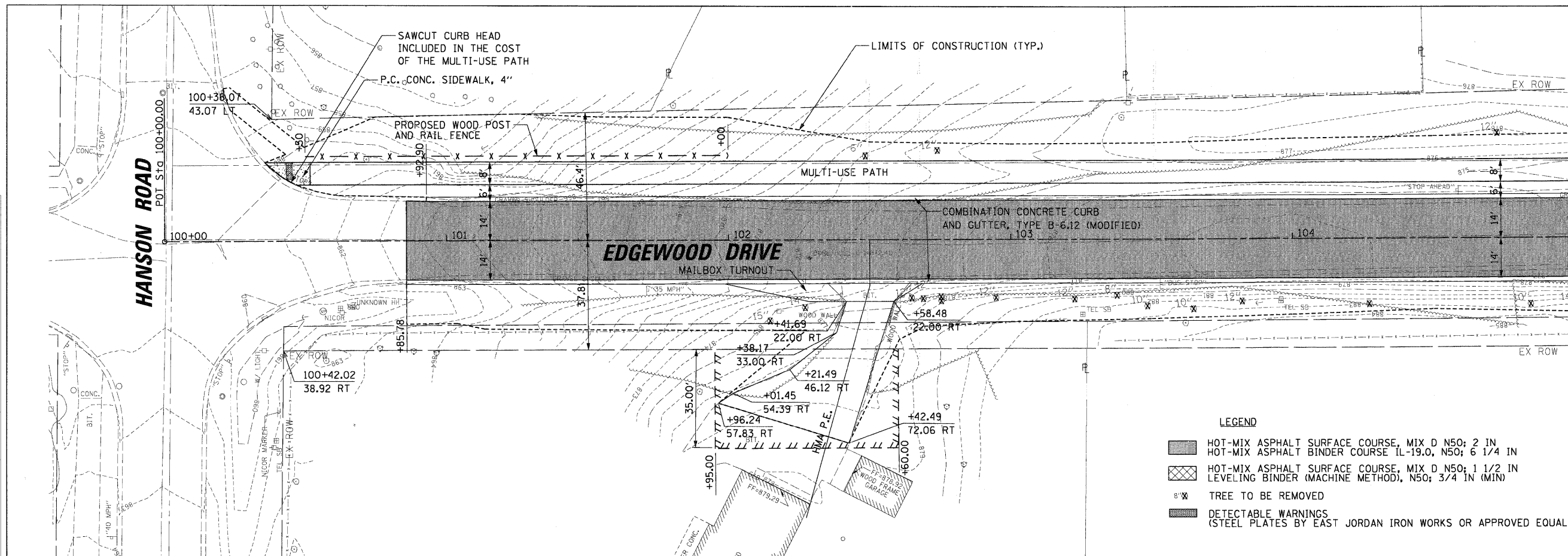


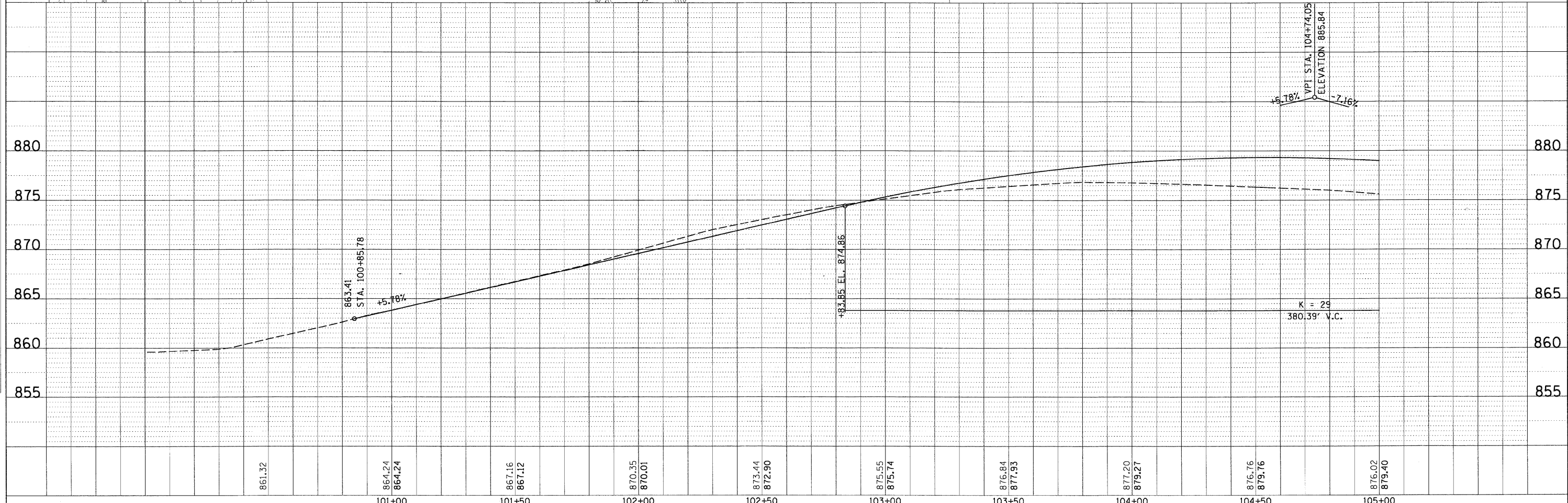
PROFILE SURVEYED BY DATE  
 ALIGNED CHECKED  
 RT. OF WAY CHECKED  
 CAUD FILE NAME  
 NO.

PLAN SURVEYED BY DATE  
 ALIGNED CHECKED  
 RT. OF WAY CHECKED  
 CAUD FILE NAME  
 NO.

**CHRISTOPHER B. BURKE ENGINEERING LTD.**  
 9575 West Higgins Road, Suite 600  
 Rosemont, Illinois 60018  
 (847) 823-0500



- LEGEND**
- HOT-MIX ASPHALT SURFACE COURSE, MIX D N50; 2 IN HOT-MIX ASPHALT BINDER COURSE IL-19.0, N50; 6 1/4 IN
  - HOT-MIX ASPHALT SURFACE COURSE, MIX D N50; 1 1/2 IN LEVELING BINDER (MACHINE METHOD), N50; 3/4 IN (MIN)
  - TREE TO BE REMOVED
  - DETECTABLE WARNINGS (STEEL PLATES BY EAST JORDAN IRON WORKS OR APPROVED EQUAL)



FILE NAME =	USER NAME = mcarman	DESIGNED -	REVISED -	<b>STATE OF ILLINOIS DEPARTMENT OF TRANSPORTATION</b>	<b>EDGEWOOD DRIVE IMPROVEMENTS ROADWAY PLAN AND PROFILE STA. 100+00 TO STA. 105+00</b>	F.A. RTE.	SECTION	COUNTY	TOTAL SHEETS	SHEET NO.	
N:\VALGONQUIN\070273\00026\Civil\IRPP_070273	1.SHT	DRAWN -	REVISED -			4010	09-00078-00-WR	MCHEMRY	128	22	
PLOT SCALE = 2"		CHECKED -	REVISED -			CONTRACT NO. 63655		ILLINOIS FED. AID PROJECT			
PLOT DATE = 11/15/2011		DATE -	REVISED -			SCALE: SHEET NO. OF SHEETS STA. TO STA.					