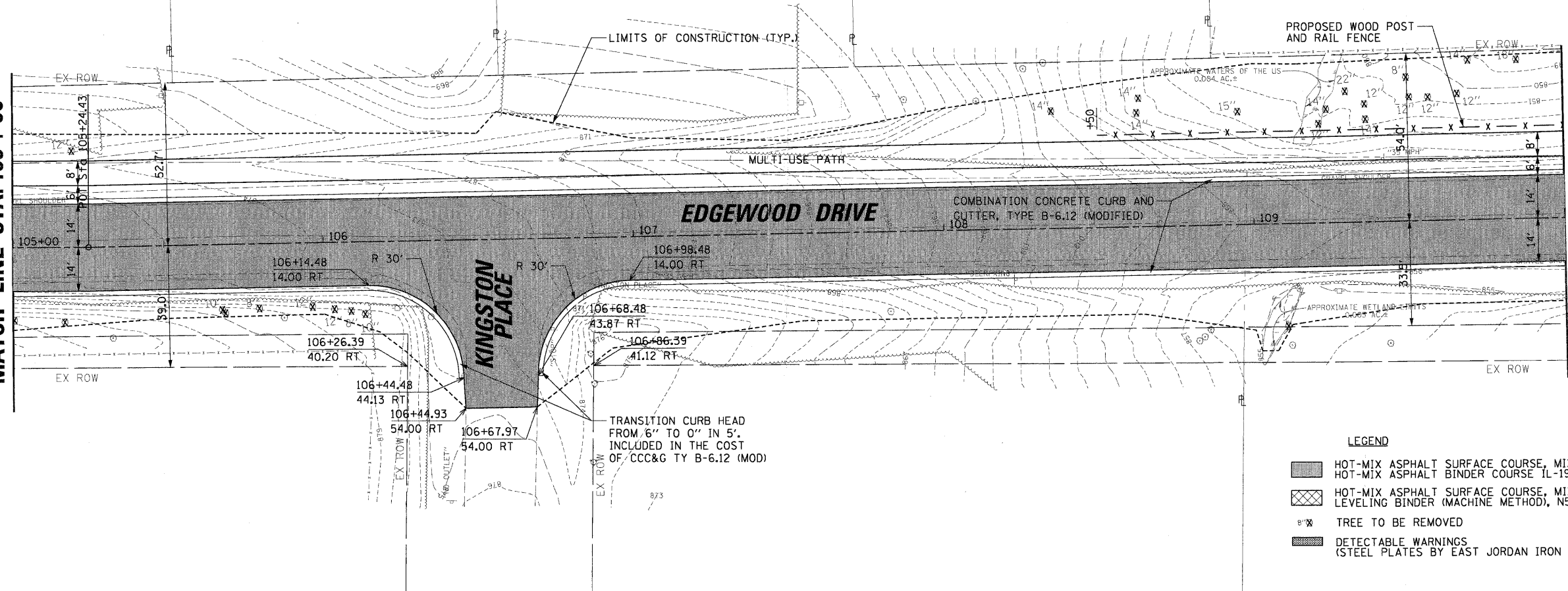


BY: _____ DATE: _____
 SURVEYED _____
 PLOTTED _____
 CHECKED _____
 NOTE BOOK NO. _____
 STRUCTURE NOTATION: OKRD
 BY: _____ DATE: _____
 SURVEYED _____
 PLOTTED _____
 CHECKED _____
 NOTE BOOK NO. _____
 STRUCTURE NOTATION: OKRD

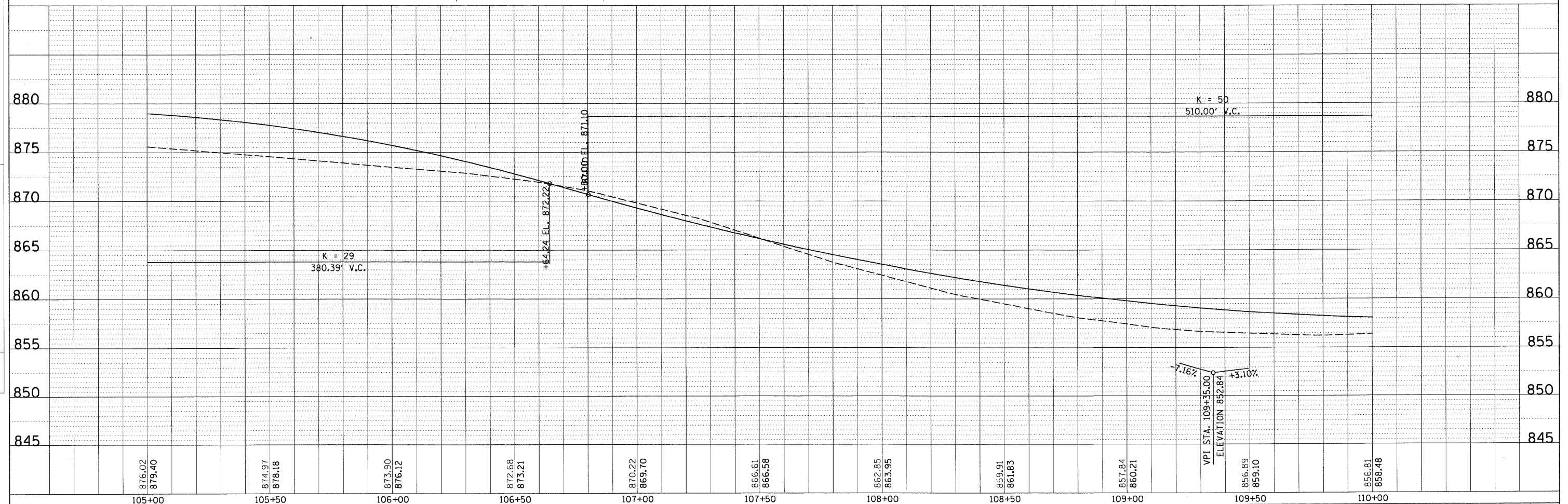
CHRISTOPHER B. BURKE ENGINEERING LTD.
 9575 West Higgins Road, Suite 600
 Rosemont, Illinois 60018
 (847) 823-0500

MATCH LINE STA. 105+00

MATCH LINE STA. 110+00



- LEGEND**
- HOT-MIX ASPHALT SURFACE COURSE, MIX D N50; 2 IN
 - HOT-MIX ASPHALT BINDER COURSE IL-19.0, N50; 6 1/4 IN
 - HOT-MIX ASPHALT SURFACE COURSE, MIX D N50; 1 1/2 IN LEVELING BINDER (MACHINE METHOD), N50; 3/4 IN (MIN)
 - TREE TO BE REMOVED
 - DETECTABLE WARNINGS (STEEL PLATES BY EAST JORDAN IRON WORKS OR APPROVED EQUAL)



FILE NAME =	USER NAME = mwarman	DESIGNED -	REVISED -	STATE OF ILLINOIS DEPARTMENT OF TRANSPORTATION	EDGEWOOD DRIVE IMPROVEMENTS ROADWAY PLAN AND PROFILE STA. 105+00 TO 110+00	F.A. RTE.	SECTION	COUNTY	TOTAL SHEETS	SHEET NO.
NE:\ALGONDWIN\070273\00026\Civil\VRPP_070273	2.5-F-T	DRAWN -	REVISED -			4010	09-00078-00-WR	McHENRY	128	23
PLOT SCALE = 20'		CHECKED -	REVISED -			CONTRACT NO. 63655				
PLOT DATE = 11/15/2011		DATE -	REVISED -			ILLINOIS FED. AID PROJECT				