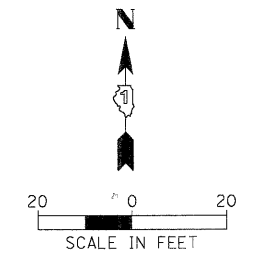
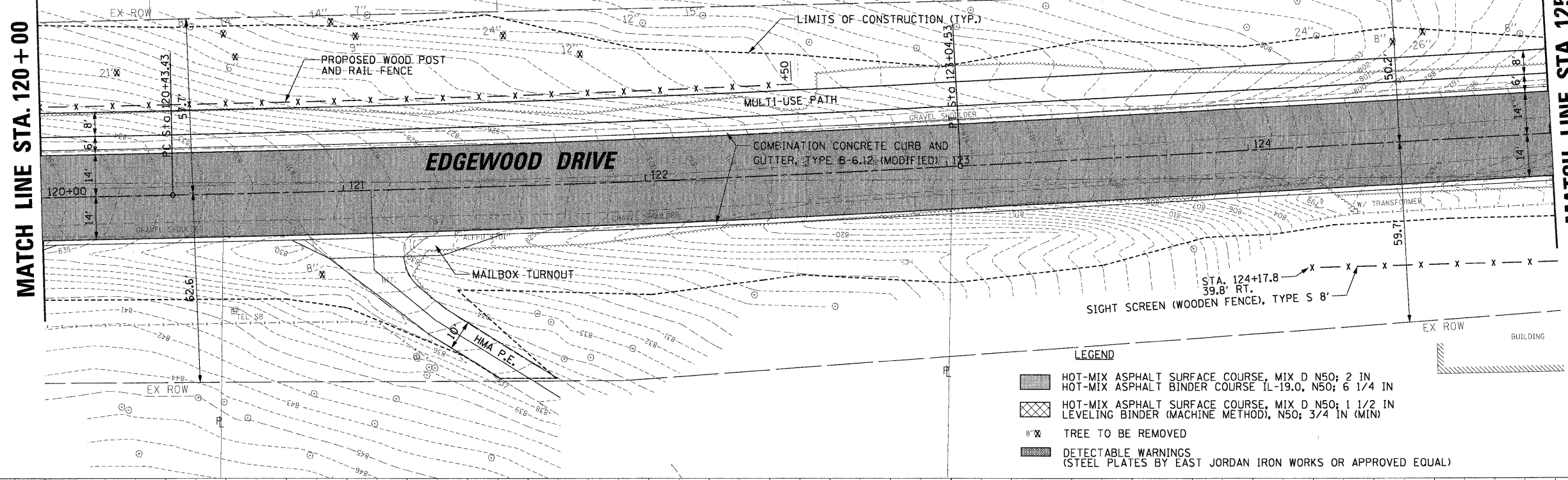


BY: _____ DATE: _____
 SURVEYED BY: _____
 CHECKED BY: _____
 DATE: _____
 BY: _____ DATE: _____
 SURVEYED BY: _____
 CHECKED BY: _____
 DATE: _____

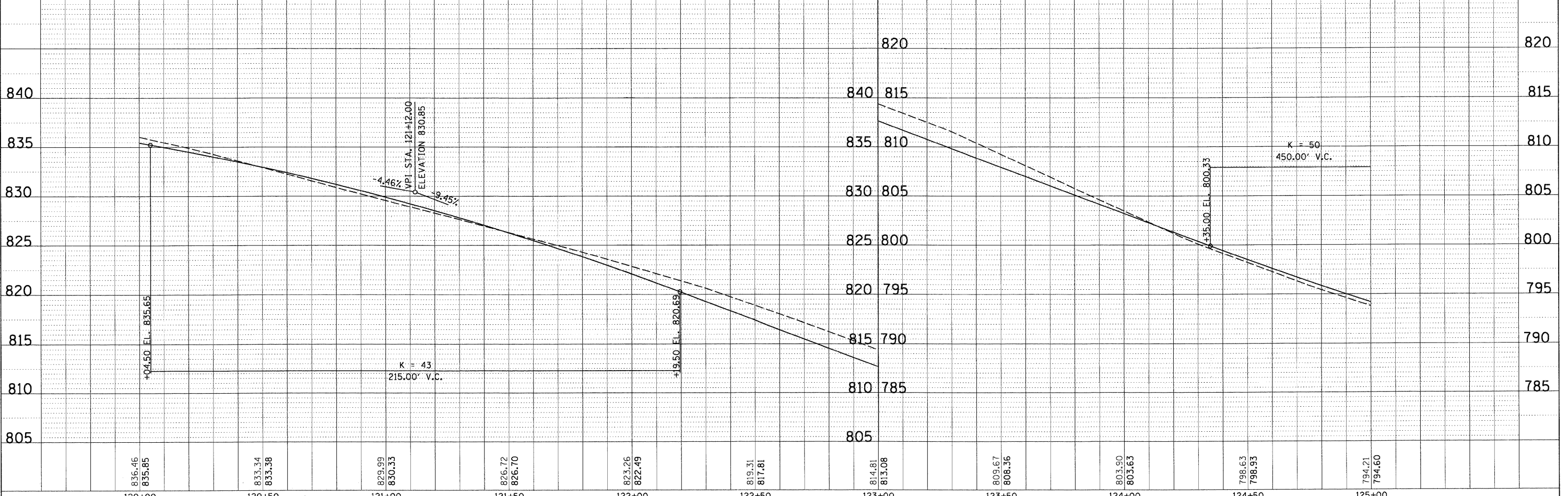
CHRISTOPHER B. BURKE ENGINEERING LTD.
 9575 West Higgins Road, Suite 600
 Rosemont, Illinois 60018
 (847) 823-0500

MATCH LINE STA. 120+00

MATCH LINE STA. 125+00



- LEGEND**
- HOT-MIX ASPHALT SURFACE COURSE, MIX D N50; 2 IN HOT-MIX ASPHALT BINDER COURSE IL-19.0, N50; 6 1/4 IN
 - HOT-MIX ASPHALT SURFACE COURSE, MIX D N50; 1 1/2 IN LEVELING BINDER (MACHINE METHOD), N50; 3/4 IN (MIN)
 - TREE TO BE REMOVED
 - DETECTABLE WARNINGS (STEEL PLATES BY EAST JORDAN IRON WORKS OR APPROVED EQUAL)



FILE NAME =	USER NAME = mcomman	DESIGNED -	REVISED -	STATE OF ILLINOIS DEPARTMENT OF TRANSPORTATION				EDGEWOOD DRIVE IMPROVEMENTS ROADWAY PLAN AND PROFILE STA. 120+00 TO STA. 125+00				F.A. RTE.	SECTION	COUNTY	TOTAL SHEETS	SHEET NO.	
N:\ALGONGQUIN\070273.00026\Civil\PRPP_070273	S.SHT	DRAWN -	REVISED -									4010	09-00078-00-WR	McHENRY	128	26	
	PLOT SCALE = 20'	CHECKED -	REVISED -									SCALE:	SHEET NO.	OF SHEETS	STA.	TO STA.	CONTRACT NO. 63655
	PLOT DATE = 11/15/2011	DATE -	REVISED -									ILLINOIS FED. AID PROJECT					