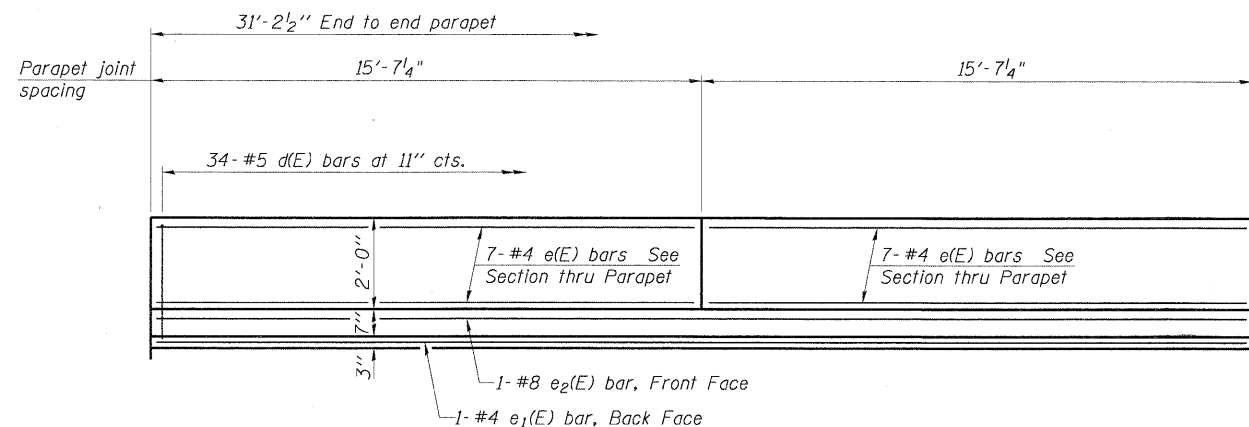
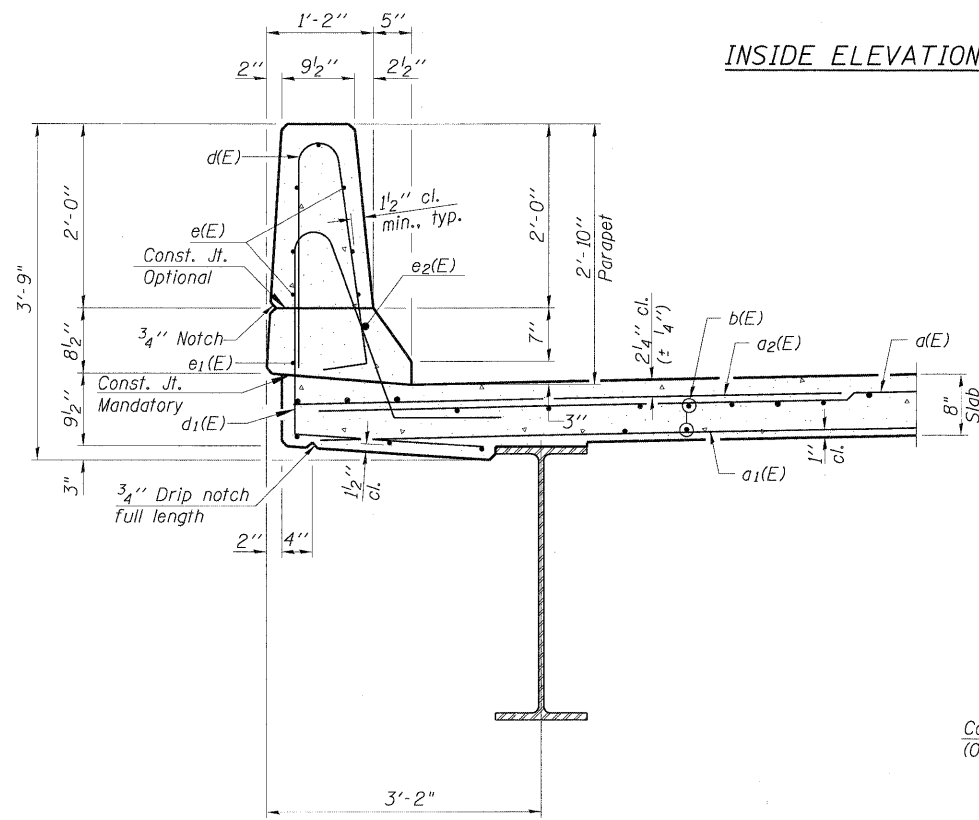


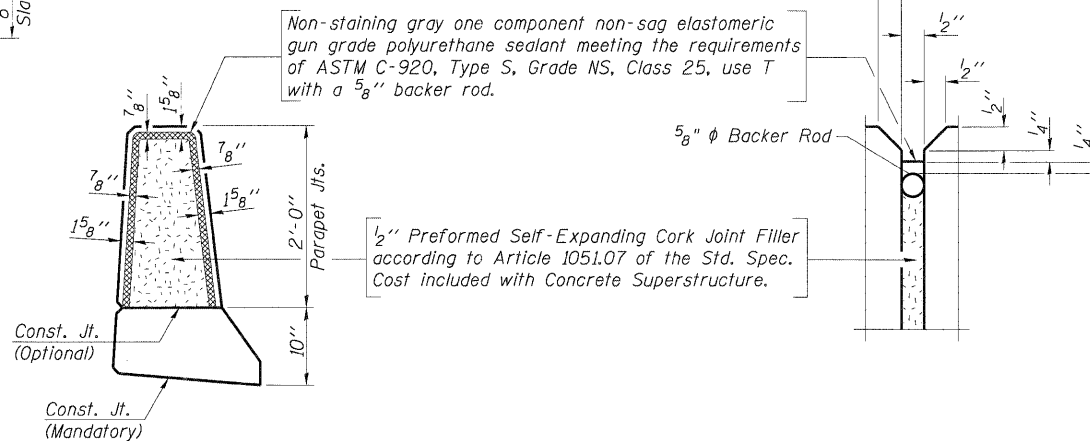
STATE OF ILLINOIS
DEPARTMENT OF TRANSPORTATION



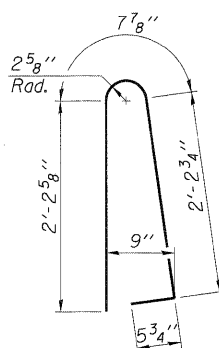
INSIDE ELEVATION OF PARAPET



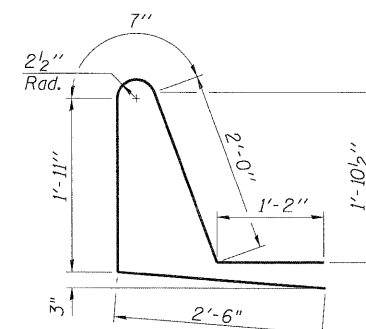
SECTION THRU PARAPET



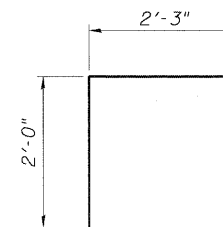
PARAPET JOINT DETAILS



BAR d(E)



BAR d1(E)



BAR v2(E)

SUPERSTRUCTURE
BILL OF MATERIAL

Bar	No.	Size	Length	Shape
d(E)	54	#5	32'-10"	—
a1(E)	38	#5	32'-2"	—
a2(E)	54	#6	6'-6"	—
a3(E)	8	#5	33'-10"	—
a4(E)	4	#5	8'-9"	—
b(E)	68	#5	30'-8"	—
d(E)	68	#5	5'-7"	⏏
d1(E)	68	#5	8'-2"	⏏
e(E)	28	#4	15'-3"	—
e1(E)	2	#4	30'-8"	—
e2(E)	2	#8	30'-8"	—
m1(E)	24	#6	8'-10"	—
s2(E)	18	#4	4'-5"	⏏
v2(E)	70	#5	4'-3"	⏏
Reinforcement Bars, Epoxy Coated		Pound	8,290	
Concrete Superstructure		Cu. Yds.	40.8	
Bar Splicers		Each	70	

SUPERSTRUCTURE DETAILS
EDGEWOOD DRIVE OVER
RATT CREEK
F.A.U. RTE. 4010
SECTION 09-00078-00-WR
MCHENRY COUNTY
STRUCTURE No. 056-3101
STA. 140+85.43

DESIGNED -	EXAMINED _____
CHECKED -	PASSED _____
DRAWN -	ENGINEER OF BRIDGE DESIGN
CHECKED -	ENGINEER OF BRIDGES AND STRUCTURES

SHEET NO. S-7 SHEETS	F.A. RTE.	SECTION	COUNTY	TOTAL SHEETS	SHEET NO.
	4010	09-00078-00-WR	MCHENRY	128	65
FED. ROAD DIST. NO.			ILLINOIS FED. AID PROJECT		
			CONTRACT NO. 63655		