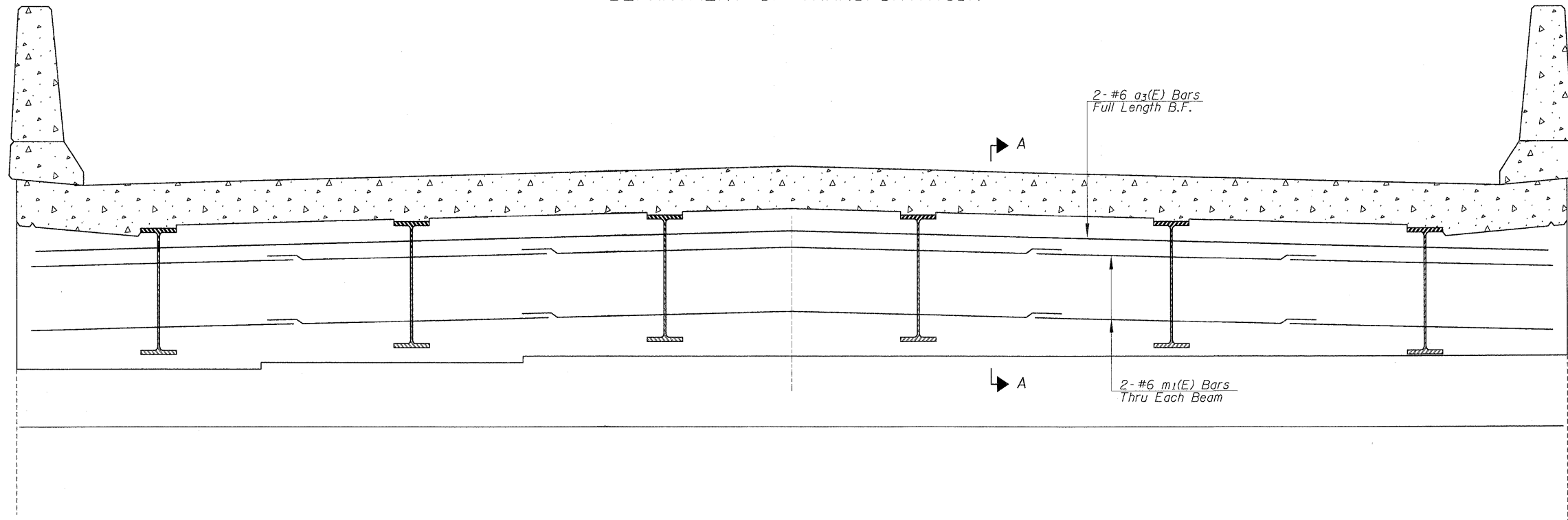
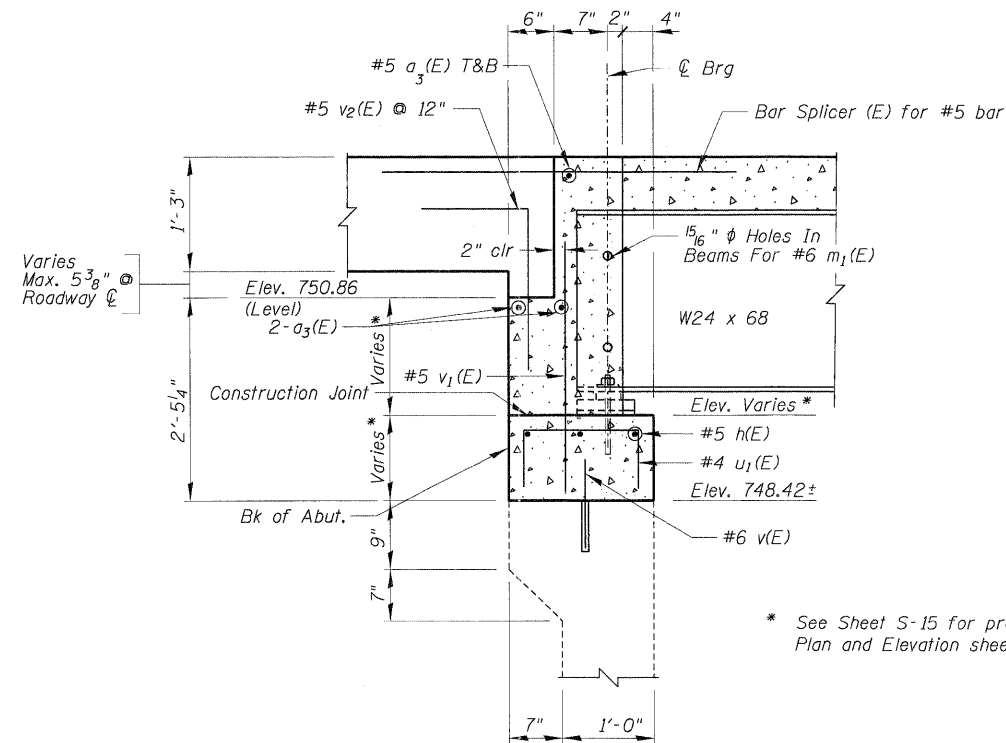


STATE OF ILLINOIS  
DEPARTMENT OF TRANSPORTATION



DIAPHRAGM ELEVATION AT WEST ABUTMENT

MIN. BAR LAP	
#6	3'-4"



\* See Sheet S-15 for proposed West Abutment Plan and Elevation sheet.

NOTES:

1. Reinforcement bars in diaphragm are billed with Superstructure on Sheet S-7.
2. Concrete in diaphragm is included with Concrete Superstructures on Sheet S-7.
3. For details of bar  $u_1(E)$ , See Sheet S-15.
4. For details of bar  $v_2(E)$ , See Sheet S-7.

WEST ABUTMENT  
DIAPHRAGM DETAILS  
EDGEWOOD DRIVE OVER  
RATT CREEK  
F.A.U. RTE. 4010  
SECTION 09-00078-00-WR  
MCHENRY COUNTY  
STRUCTURE No. 056-3101  
STA. 140+85.43

DESIGNED -
CHECKED -
DRAWN -
CHECKED -

EXAMINED	ENGINEER OF BRIDGE DESIGN
PASSED	ENGINEER OF BRIDGES AND STRUCTURES

SHEET NO. S-8 SHEETS	F.A. RTE.	SECTION	COUNTY	TOTAL SHEETS	SHEET NO.
	4010	09-00078-00-WR	MCHENRY	128	66
CONTRACT NO. 63655					
FED. ROAD DIST. NO.		ILLINOIS FED. AID PROJECT			