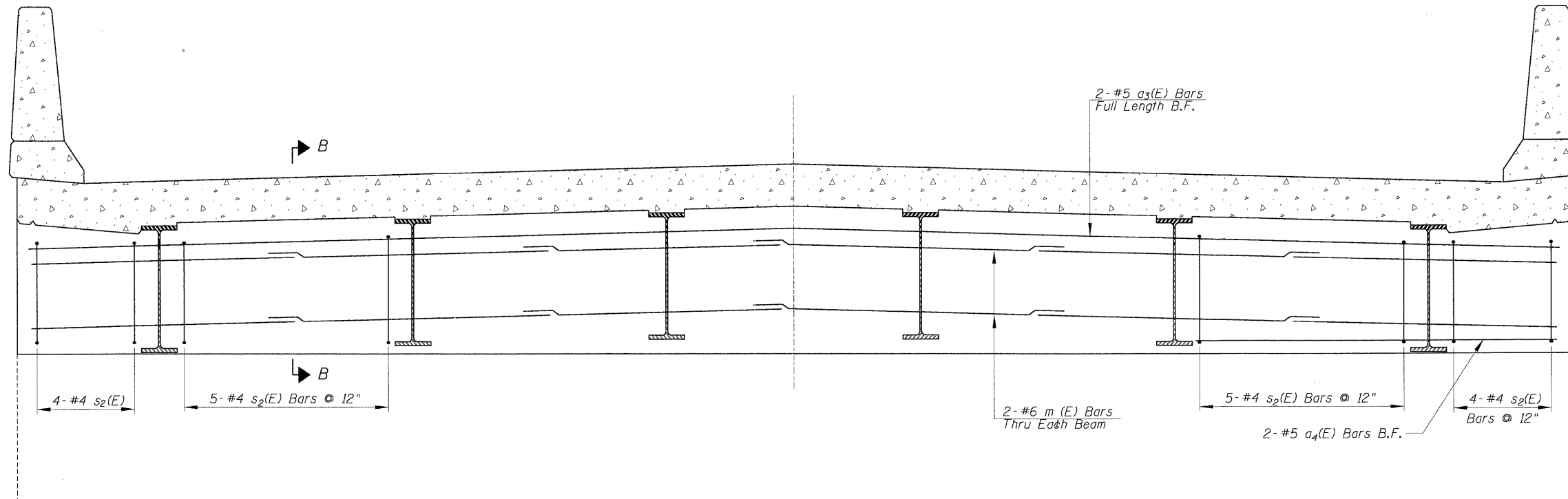
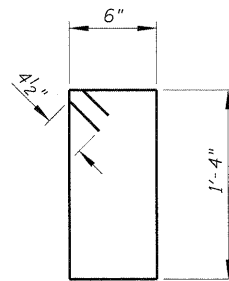


STATE OF ILLINOIS
DEPARTMENT OF TRANSPORTATION

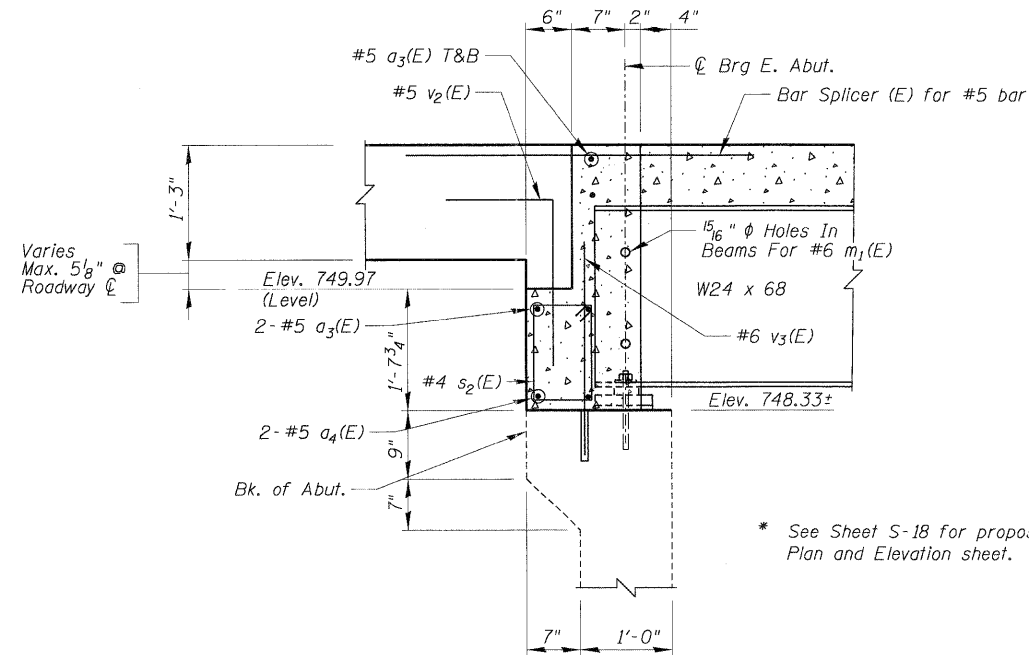


DIAPHRAGM ELEVATION AT EAST ABUTMENT

MIN. BAR LAP	
#6	3'-4"



BAR s₂(E)



SECTION B-B

NOTES:

1. Reinforcement bars in diaphragm are billed with Superstructure on Sheet S-7.
2. Concrete in diaphragm is included with Concrete Superstructures on Sheet S-7.
3. For details of bar v₂(E), See Sheet S-7.
4. The s₂(E) bars shall be placed parallel to the beams. Spacing of these bars shall be at right angles to the beams.

* See Sheet S-18 for proposed East Abutment Plan and Elevation sheet.

EAST ABUTMENT
DIAPHRAGM DETAILS
EDGEWOOD DRIVE OVER
RATT CREEK
F.A.U. RTE. 4010
SECTION 09-00078-00-WR
MCHENRY COUNTY
STRUCTURE No. 056-3101
STA. 140+85.43

DESIGNED -
CHECKED -
DRAWN -
CHECKED -

EXAMINED
PASSED
ENGINEER OF BRIDGE DESIGN
ENGINEER OF BRIDGES AND STRUCTURES

SHEET NO. S-9 SHEETS	F.A. RTE.	SECTION	COUNTY	TOTAL SHEETS	SHEET NO.
	4010	09-00078-00-WR	MCHENRY	128	67
CONTRACT NO. 63655					
FED. ROAD DIST. NO.		ILLINOIS FED. AID PROJECT			