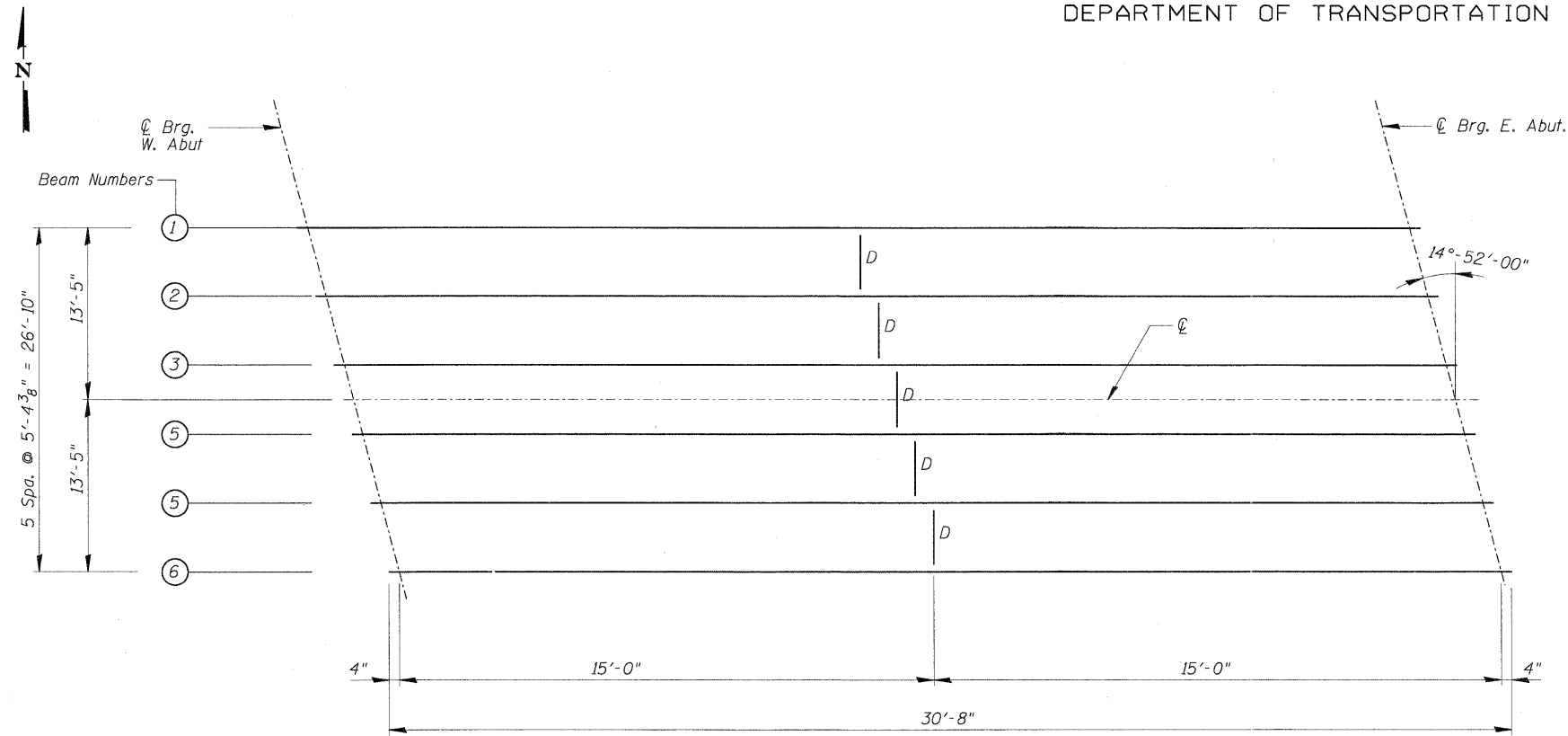
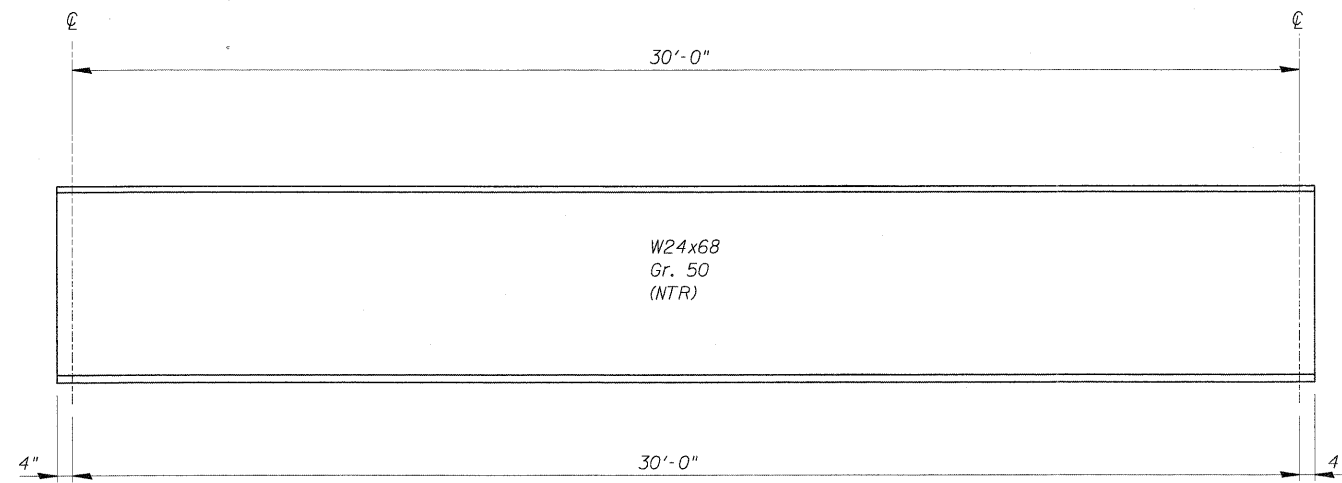


STATE OF ILLINOIS
DEPARTMENT OF TRANSPORTATION



FRAMING PLAN



GIRDER ELEVATION

NOTES:

1. N.T.R. designates members subject to the supplemental requirements for notch toughness (Zone 2).
2. All structural steel for W24x68 beams shall be AASHTO M270 Grade 50.
3. Fasteners shall be high strength bolts, conforming to AASHTO M-164 Specification (ASTM A 325). Bolts 7/8"φ, open holes 15/16"φ, unless noted otherwise.

TOP OF BEAM ELEVATIONS-BEFORE DEFLECTION
(For Fabrication use only)

LOCATION	BEAM 1	BEAM 2	BEAM 3	BEAM 4	BEAM 5	BEAM 6
C Brg. W. Abut.	751.685	751.727	751.768	751.726	751.600	751.474
C Brg. E. Abut.	750.797	750.839	750.880	750.838	750.712	750.586

DESIGNED	
CHECKED	
DRAWN	
CHECKED	

EXAMINED _____
ENGINEER OF BRIDGE DESIGN

PASSED _____
ENGINEER OF BRIDGES AND STRUCTURES

FRAMING PLAN DETAILS
EDGEWOOD DRIVE OVER
RATT CREEK
F.A.U. RTE. 4010
SECTION 09-00078-00-WR
MCHENRY COUNTY
STRUCTURE No. 056-3101
STA. 140+85.43

SHEET NO. S-12 SHEETS	F.A. RTE.	SECTION	COUNTY	TOTAL SHEETS	SHEET NO.
	4010	09-00078-00-WR	MCHENRY	128	70
CONTRACT NO. 63655					
FED. ROAD DIST. NO.		ILLINOIS FED. AID PROJECT			