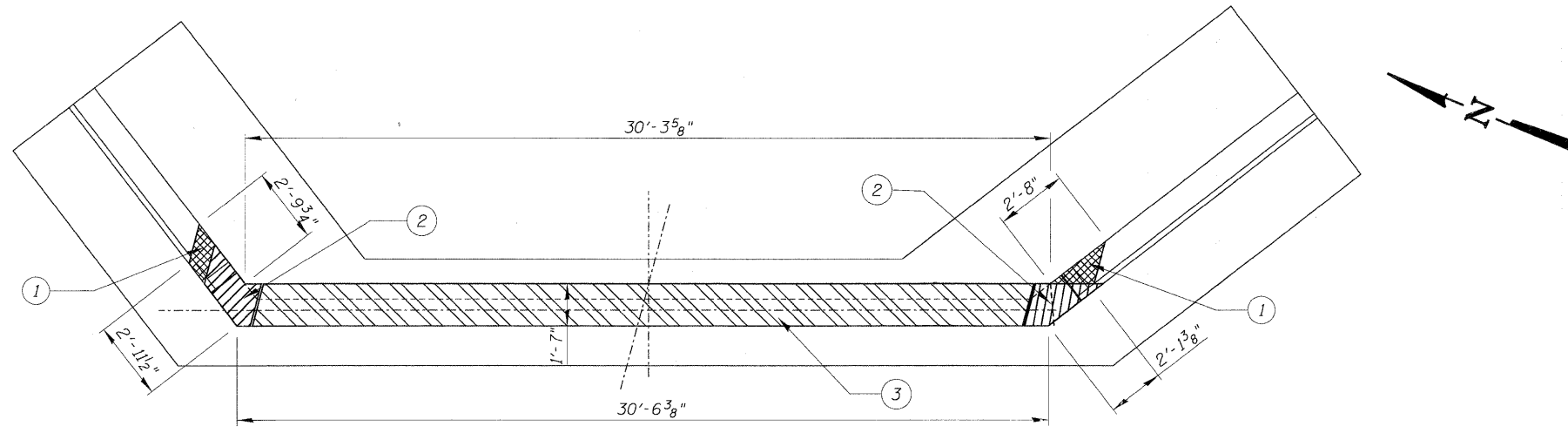


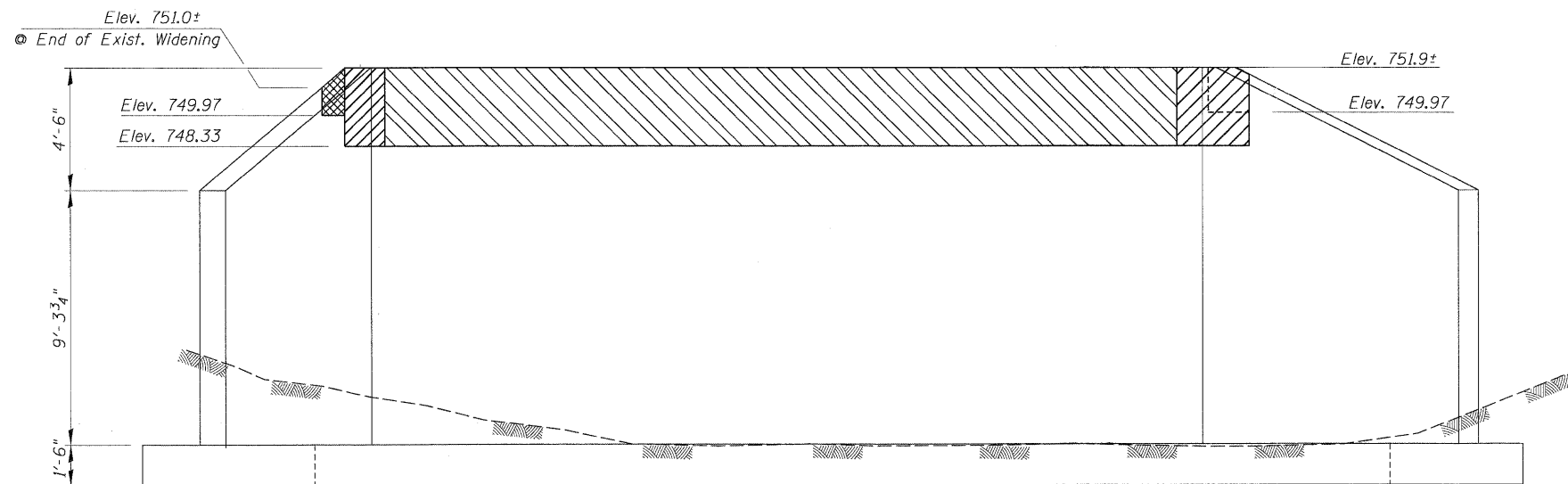
STATE OF ILLINOIS
DEPARTMENT OF TRANSPORTATION





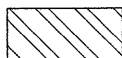
NOTES:

- ① Remove Top of Wingwall Up to Elev. 749.97
- ② Remove Top of Wingwall Up to Elev. 748.33
- ③ Remove Diaphragm and Backwall to Elev. 748.33

PLAN - EXISTING EAST ABUTMENT



LEGEND:

-  Partial Wingwall Removal
Paid For As Concrete Removal
(See Notes)
-  Partial Wingwall Removal
Paid For As Concrete Removal
(See Notes)
-  Diaphragm And Backwall Removal
Paid For As Removal of Existing Superstructures
(See Notes)

ELEVATION - EXISTING EAST ABUTMENT

EAST ABUTMENT
CONCRETE REMOVAL
EDGEWOOD DRIVE OVER
RATT CREEK
F.A.U. RTE. 4010
SECTION 09-00078-00-WR
MCHENRY COUNTY
STRUCTURE No. 056-3101
STA. 140+85.43

| | |
|------------|------------------------------------|
| DESIGNED - | EXAMINED |
| CHECKED - | PASSED |
| DRAWN - | ENGINEER OF BRIDGE DESIGN |
| CHECKED - | ENGINEER OF BRIDGES AND STRUCTURES |

| | | | | | |
|-----------------------------|--------------|----------------|------------------|-----------------|--------------|
| SHEET NO. S-17 SHEETS | F.A. RTE. | SECTION | COUNTY | TOTAL SHEETS | SHEET NO. |
| | 4010 | 09-00078-00-WR | MCHENRY | 128 | 75 |
| CONTRACT NO. 63655 | | | | | |
| FED. ROAD DIST. NO. | | ILLINOIS | FED. AID PROJECT | | |