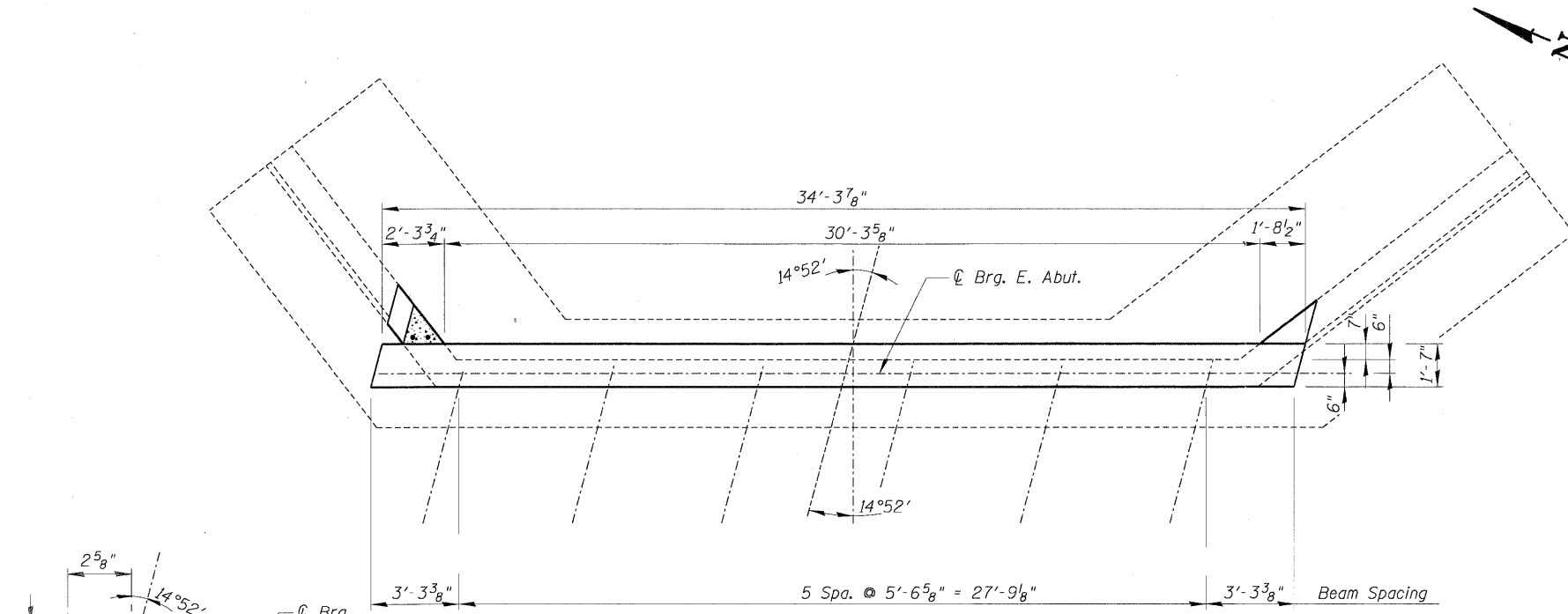


STATE OF ILLINOIS  
DEPARTMENT OF TRANSPORTATION

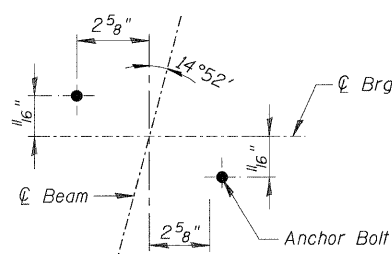
EAST ABUTMENT  
BILL OF MATERIAL

Bar	No.	Size	Length	Shape
v3(E)	31	#6	3'-0"	—
v4(E)	2	#6	2'-0"	—
Concrete Structures		Cu. Yd.	0.2	
Reinforcement Bars, Epoxy Coated		Pound	150	
Concrete Removal		Cu. Yd.	1.0	

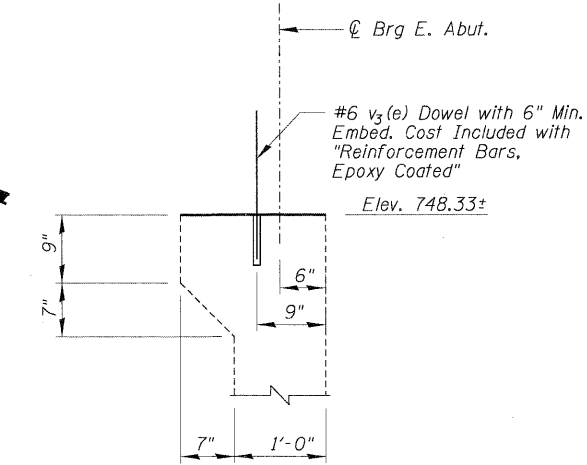
For details of Bar Splicers, see sheet - of -



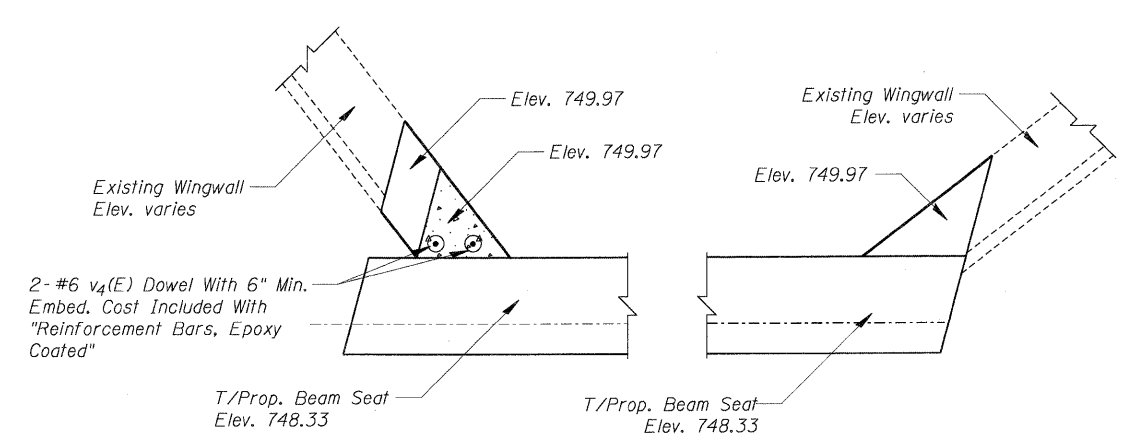
PLAN - PROPOSED EAST ABUTMENT



ANCHOR BOLT LOCATION

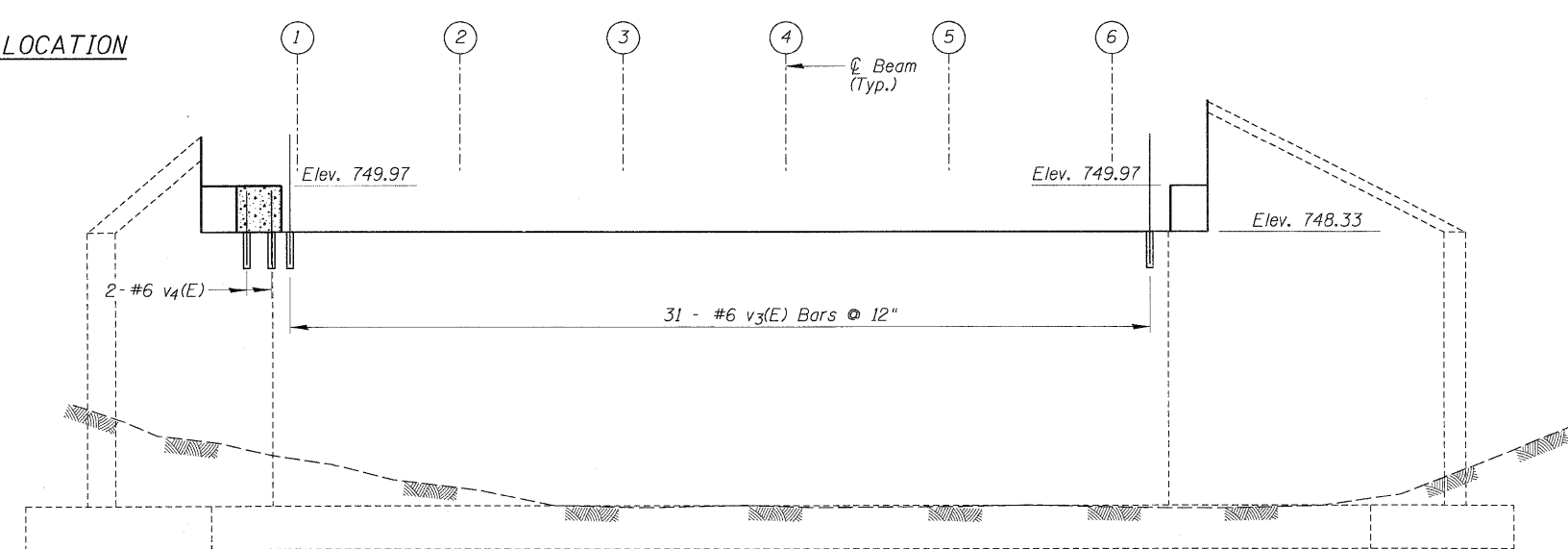


EAST ABUTMENT DETAIL



NE CORNER

SE CORNER



ELEVATION - PROPOSED EAST ABUTMENT

- NOTE:
- Epoxy Grout #6 v(E) Bars In 6" (Min.) Drilled Holes According To Section 584 of the Standard Specifications.

PROPOSED EAST ABUTMENT  
PLAN AND ELEVATION  
EDGEWOOD DRIVE OVER  
RATT CREEK  
F.A.U. RTE. 4010  
SECTION 09-00078-00-WR  
MCHENRY COUNTY  
STRUCTURE No. 056-3101  
STA. 140+85.43

DESIGNED -	EXAMINED
CHECKED -	PASSED
DRAWN -	ENGINEER OF BRIDGE DESIGN
CHECKED -	ENGINEER OF BRIDGES AND STRUCTURES

SHEET NO. S-18 SHEETS	F.A. RTE.	SECTION	COUNTY	TOTAL SHEETS	SHEET NO.
	4010	09-00078-00-WR	MCHENRY	128	76
CONTRACT NO. 63655					
FED. ROAD DIST. NO.		ILLINOIS FED. AID PROJECT			