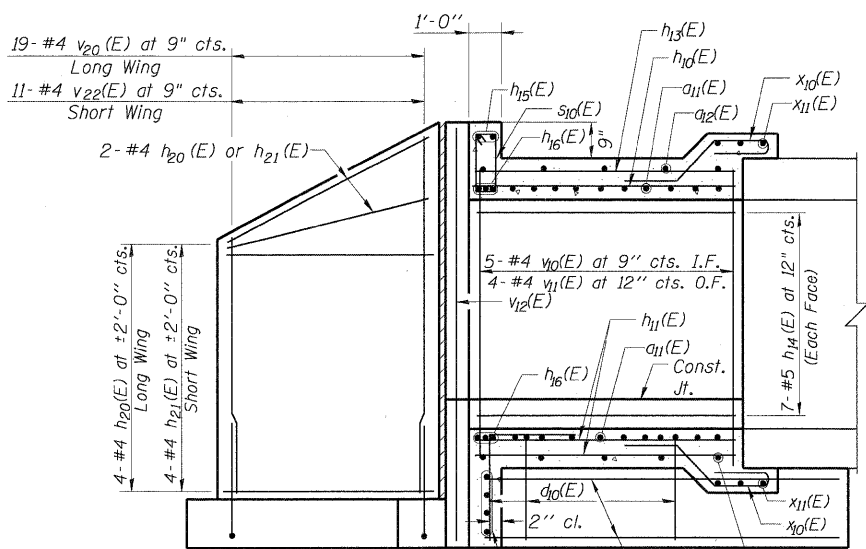
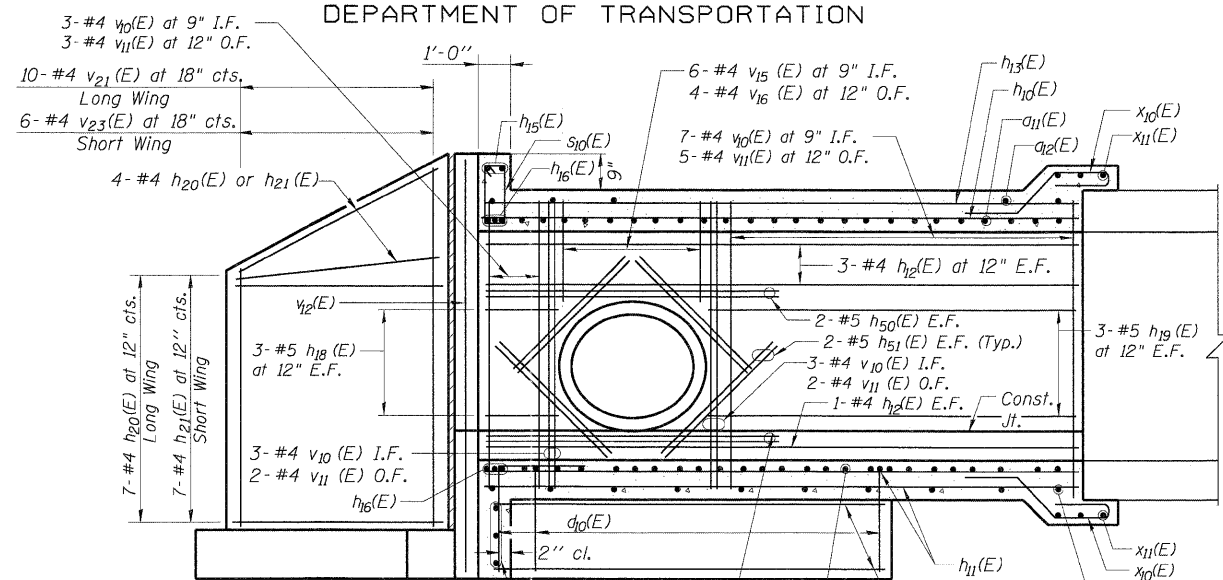


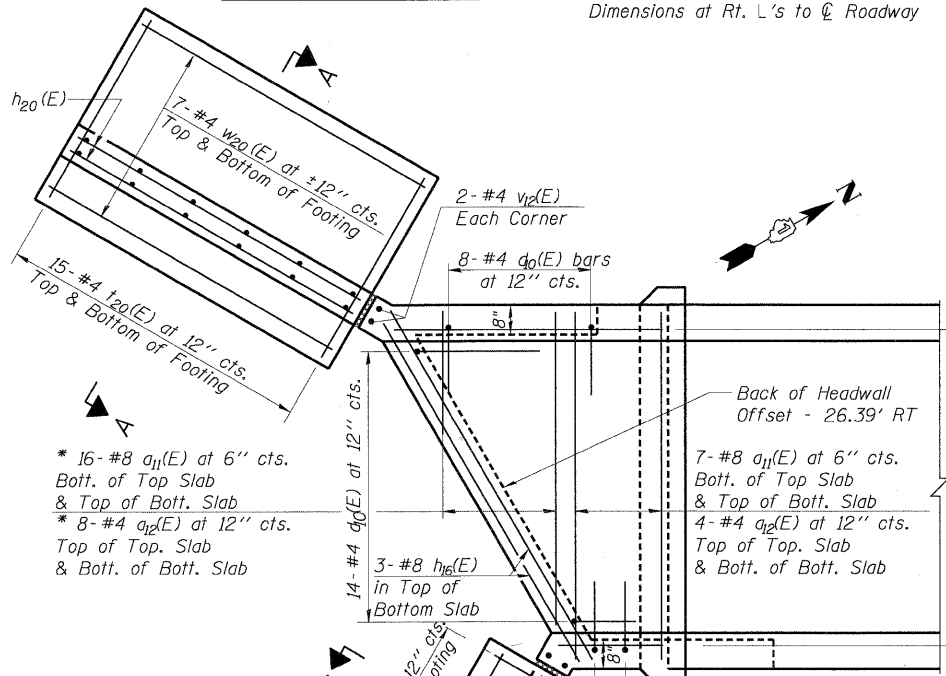
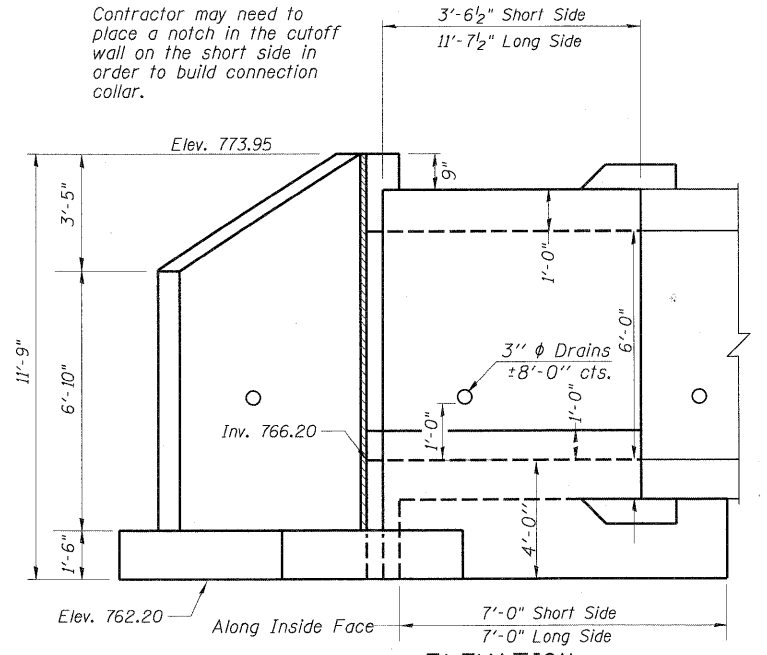
STATE OF ILLINOIS
DEPARTMENT OF TRANSPORTATION



HALF LONG SECTION
REIN.-BACK FACE SHOWING SHORT END OF BARREL
Dimensions at Rt. L's to \odot Roadway

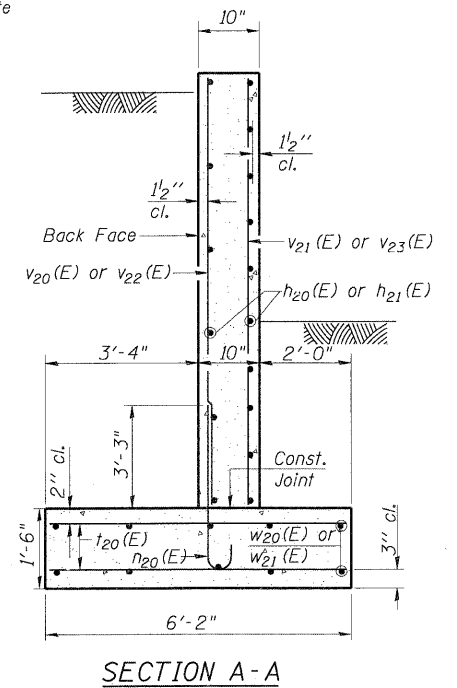
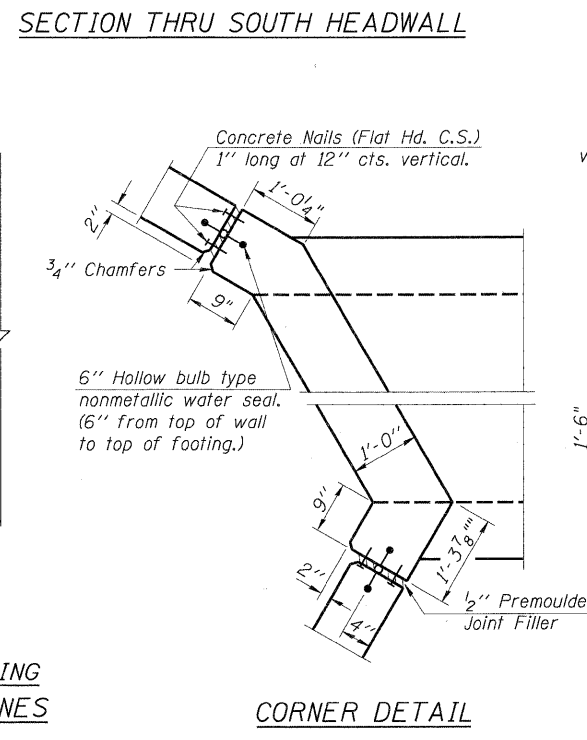
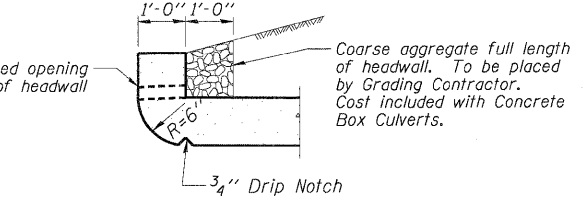
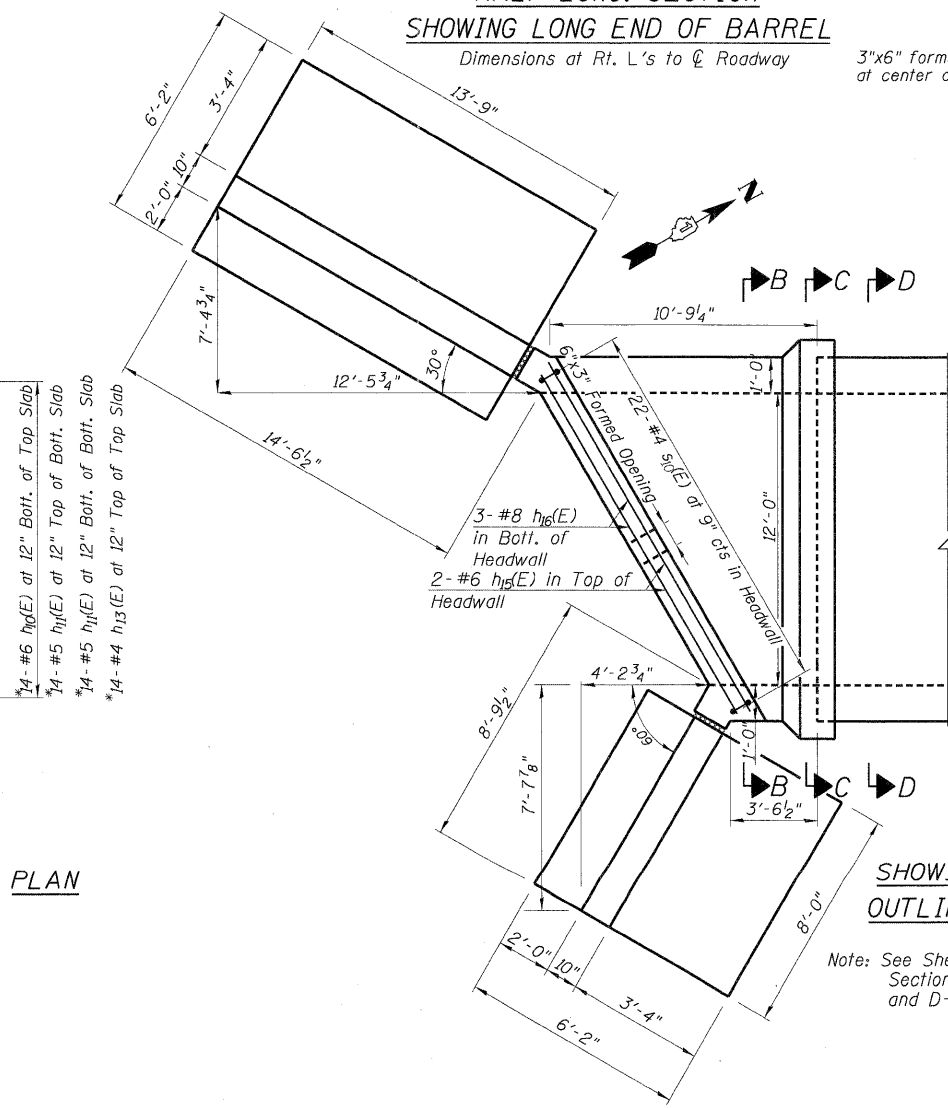


REIN.-FRONT FACE
HALF LONG SECTION
SHOWING LONG END OF BARREL
Dimensions at Rt. L's to \odot Roadway



* $a_{11}(E)$ and $a_{12}(E)$ bars in skew portion of slab shall be ordered full length & cut to fit. Balance of bar to be used in opposite end section.
 $h_{10}(E)$, $h_{11}(E)$ and $h_{13}(E)$ bars shall be ordered full length & cut to fit. Balance of bar to be used in opposite end section.

DESIGNED	200	EXAMINED	ENGINEER OF BRIDGE DESIGN
CHECKED		PASSED	ENGINEER OF BRIDGES AND STRUCTURES
DRAWN			
CHECKED			



SOUTH END SECTION
EDGEWOOD DRIVE OVER
RATT CREEK TRIBUTARY
F.A.U. RTE. 4010
SECTION 09-00078-00-WR
MCHENRY COUNTY
STA. 129+49.07

SHEET NO. S-2 SHEETS	F.A. RTE.	SECTION	COUNTY	TOTAL SHEETS	SHEET NO.
	4010	09-00078-00-WR	MCHENRY	128	81
CONTRACT NO. 63655					
FED. ROAD DIST. NO.		ILLINOIS FED. AID PROJECT			