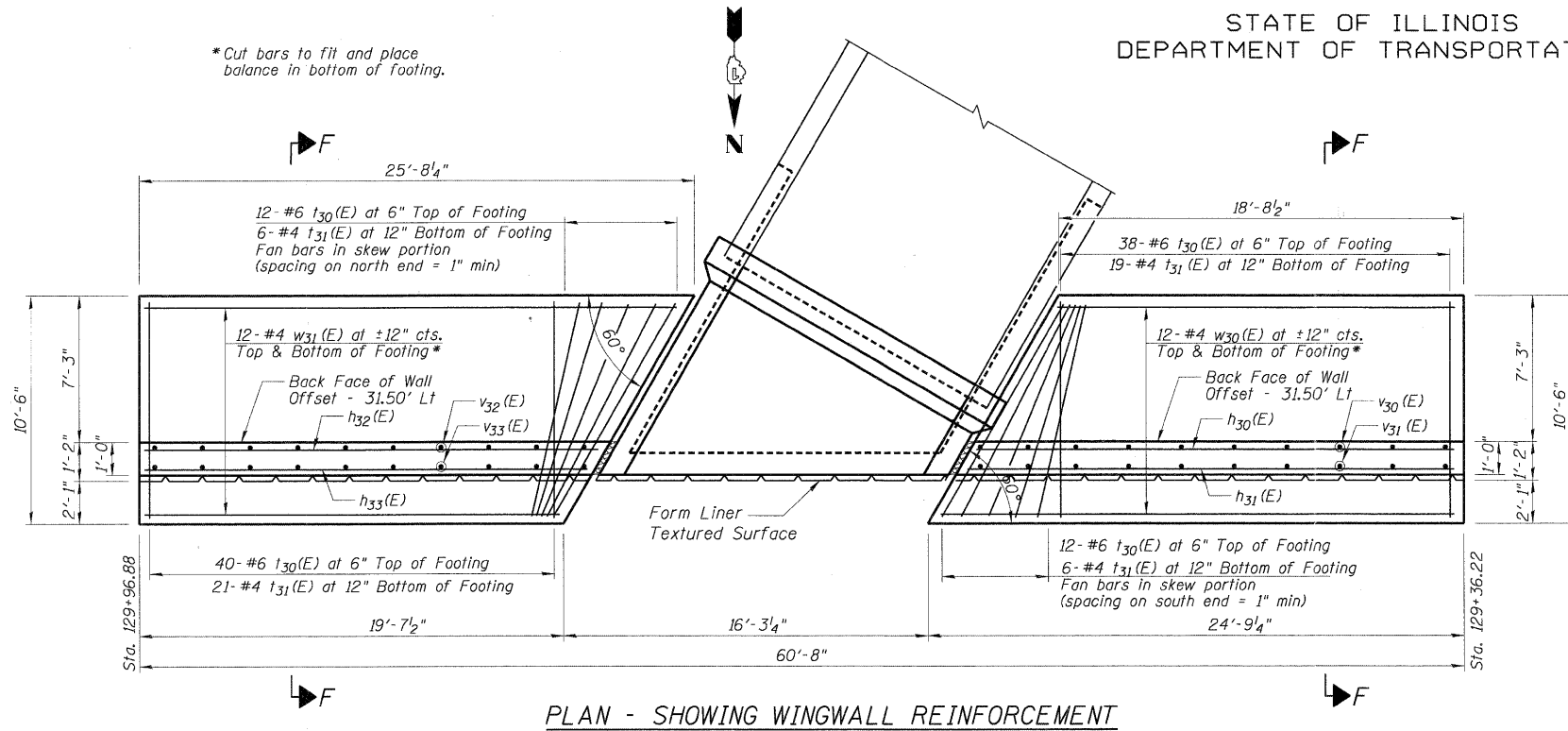
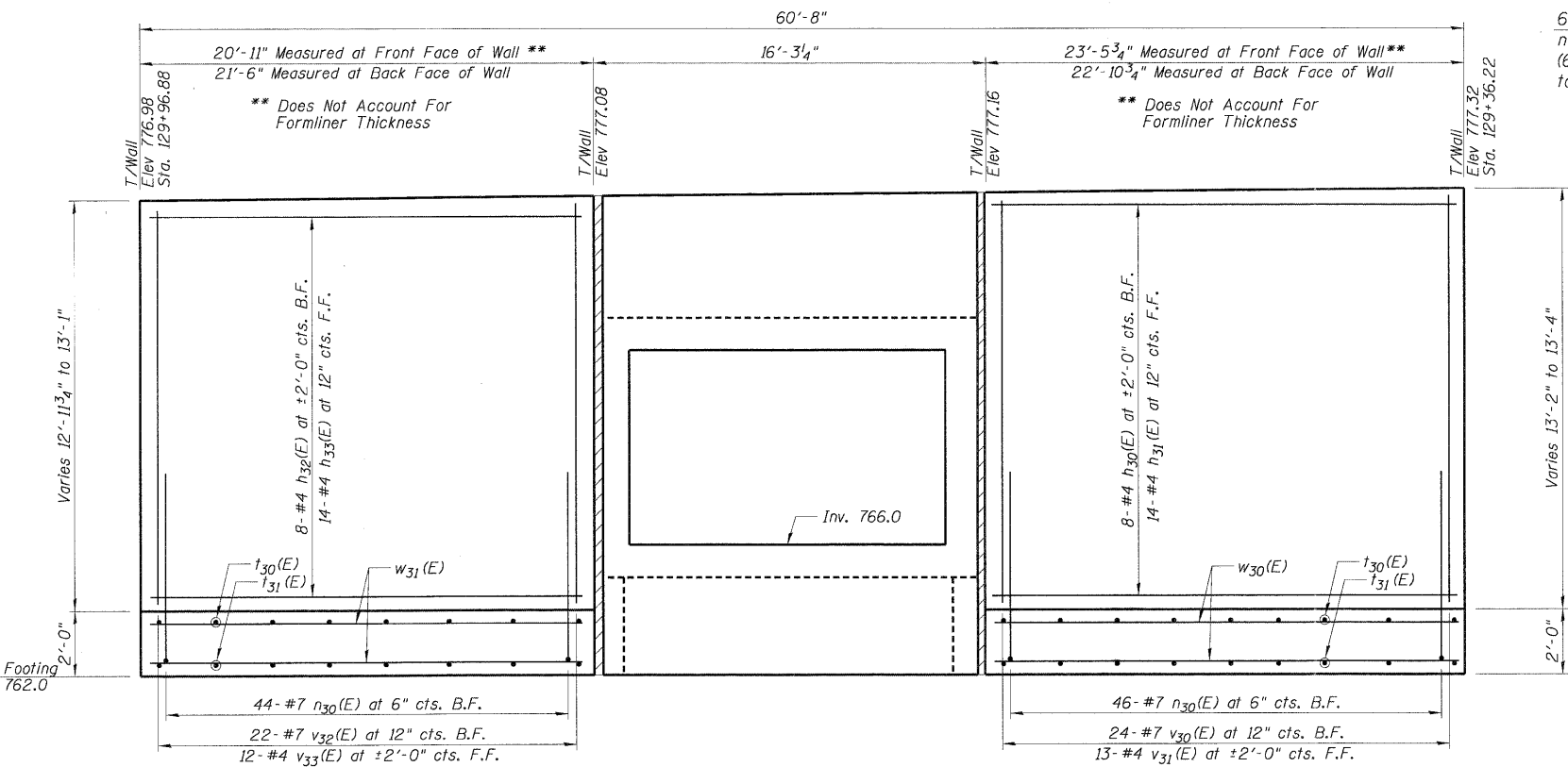


STATE OF ILLINOIS
DEPARTMENT OF TRANSPORTATION



PLAN - SHOWING WINGWALL REINFORCEMENT

Note: See Sheet S-5 for Section F-F.



ELEVATION - SHOWING WINGWALL REINFORCEMENT - LOOKING SOUTH

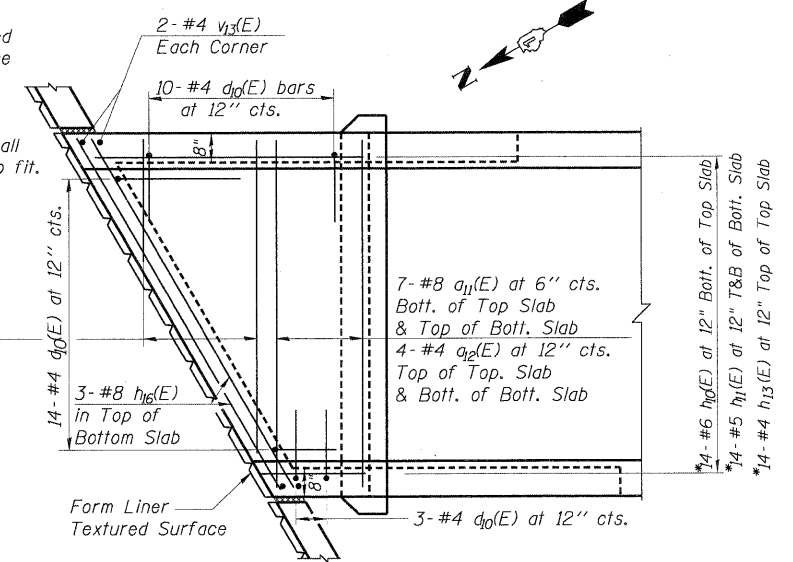
(Form Liner Textured Surface Omitted For Clarity)

DESIGNED -	200
CHECKED -	EXAMINED
DRAWN -	PASSED
CHECKED -	ENGINEER OF BRIDGE DESIGN
	ENGINEER OF BRIDGES AND STRUCTURES

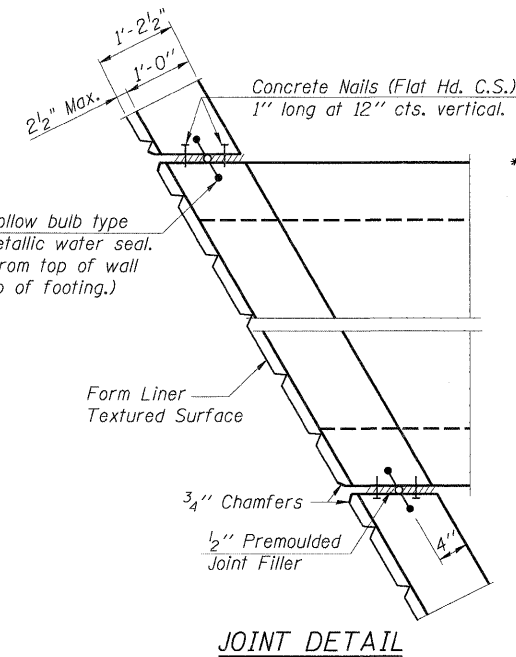
* $a_{11}(E)$ and $a_{12}(E)$ bars in skew portion of slab shall be ordered full length & cut to fit. Balance of bar to be used in opposite end section.

$h_{10}(E)$, $h_{11}(E)$ and $h_{13}(E)$ bars shall be ordered full length & cut to fit. Balance of bar to be used in opposite end section.

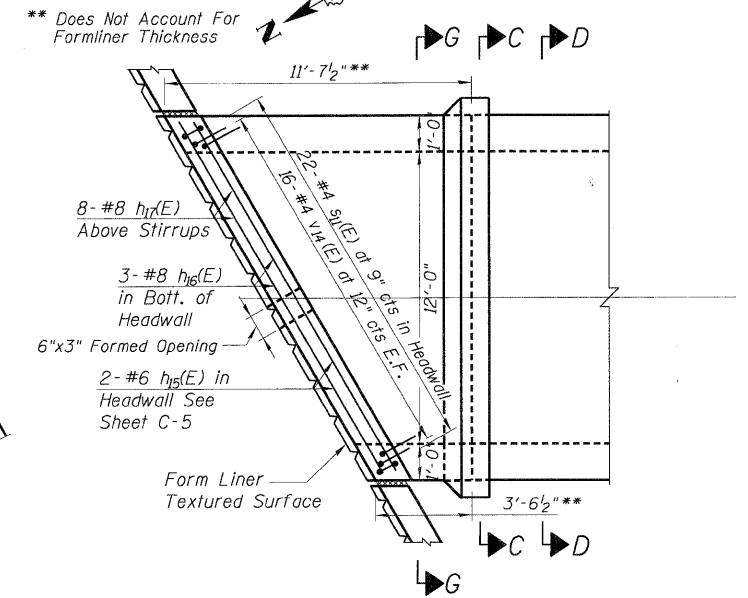
* 16- #8 $a_{11}(E)$ at 6" cts. Bott. of Top Slab & Top of Bott. Slab
* 8- #4 $a_{12}(E)$ at 12" cts. Top of Top. Slab & Bott. of Bott. Slab



PLAN - SHOWING CULVERT REINFORCEMENT

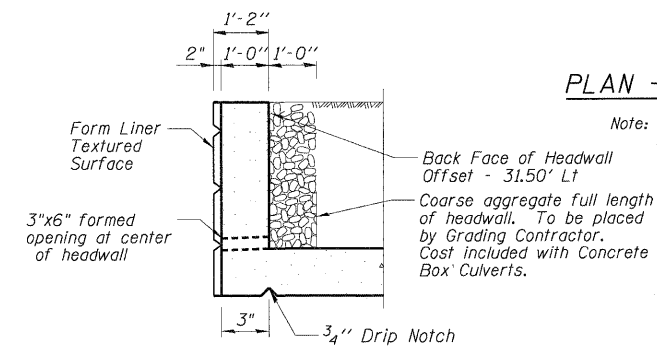


JOINT DETAIL



PLAN - SHOWING CULVERT REINFORCEMENT

Note: See Sheet S-3 for Sections C-C and D-D. See Sheet S-5 for Section G-G.



SECTION THRU NORTH HEADWALL

NORTH END SECTION
EDGEWOOD DRIVE OVER
RATT CREEK TRIBUTARY
F.A.U. RTE. 4010
SECTION 09-00078-00-WR
MCHENRY COUNTY
STA. 129+49.07

SHEET NO. S-4 SHEETS	F.A. RTE.	SECTION	COUNTY	TOTAL SHEETS	SHEET NO.
	4010	09-00078-00-WR	MCHENRY	128	83
CONTRACT NO. 63655					
FED. ROAD DIST. NO.		ILLINOIS FED. AID PROJECT			