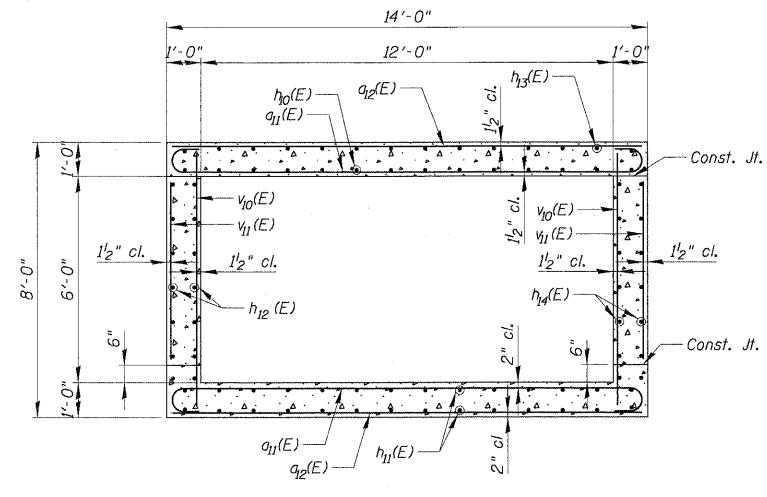
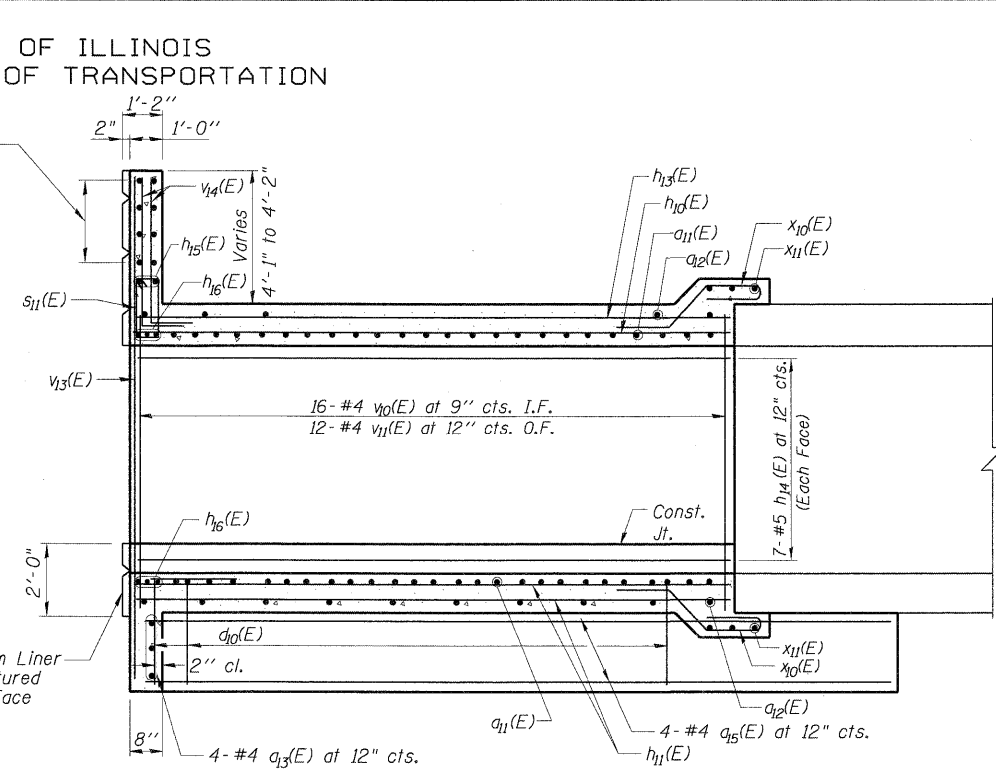
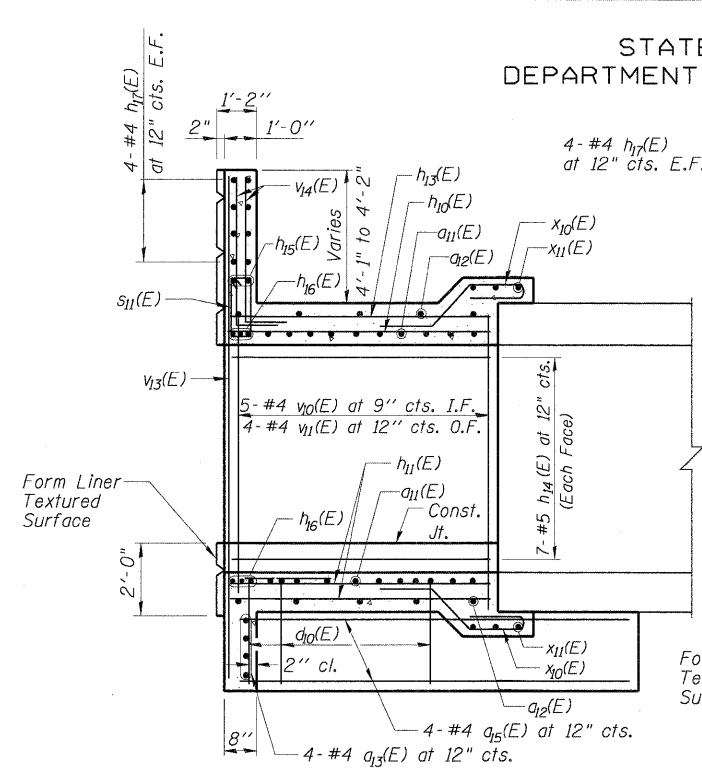
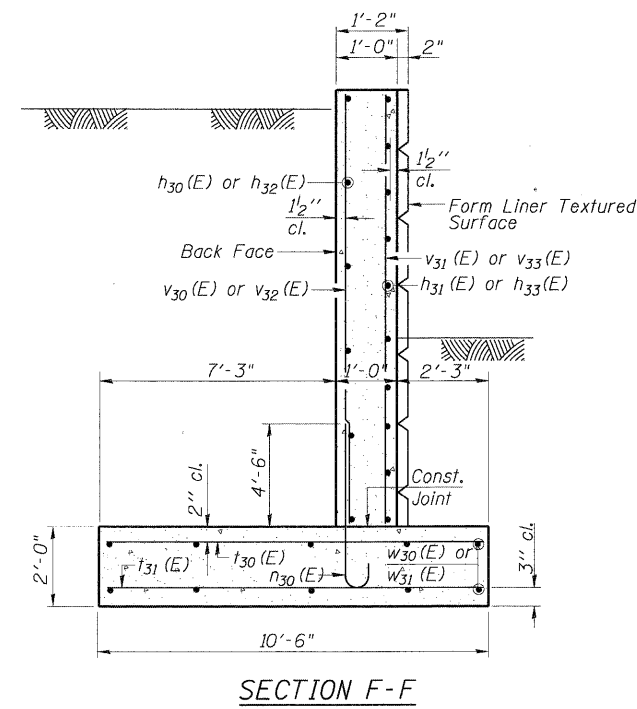


STATE OF ILLINOIS  
DEPARTMENT OF TRANSPORTATION

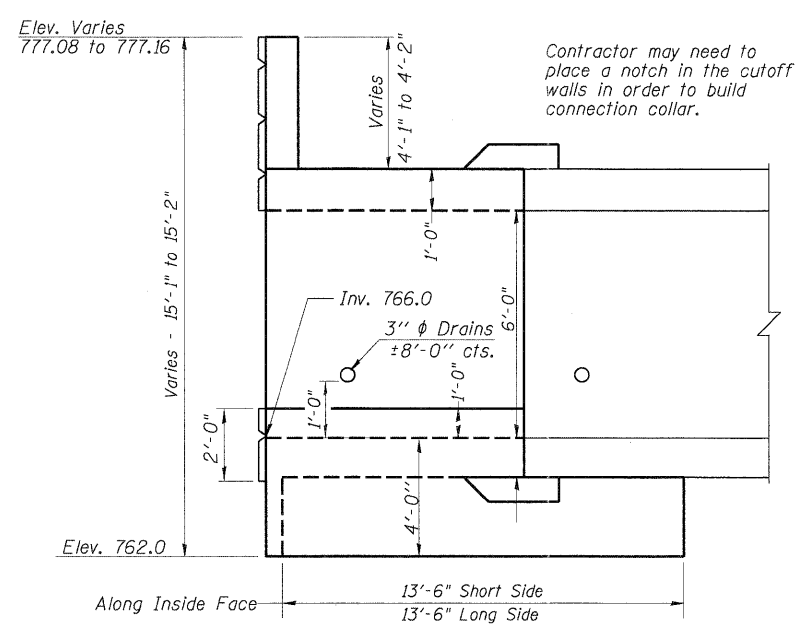
BILL OF MATERIAL  
NORTH END SECTION

Bar	No.	Size	Length	Shape
a <sub>1k</sub> (E)	30	#8	15'-6"	
a <sub>2</sub> (E)	16	#4	13'-8"	
a <sub>3</sub> (E)	4	#4	15'-10"	
a <sub>5</sub> (E)	8	#4	13'-6"	
a <sub>6</sub> (E)	27	#4	5'-6"	
h <sub>10</sub> (E)	7	#6	14'-6"	
h <sub>11</sub> (E)	14	#5	14'-6"	
h <sub>12</sub> (E)	14	#5	11'-3"	
h <sub>13</sub> (E)	7	#4	14'-6"	
h <sub>14</sub> (E)	14	#5	3'-2"	
h <sub>15</sub> (E)	2	#6	15'-10"	
h <sub>16</sub> (E)	6	#8	15'-10"	
h <sub>17</sub> (E)	8	#4	15'-10"	
h <sub>30</sub> (E)	8	#4	22'-7"	
h <sub>31</sub> (E)	14	#4	23'-2"	
h <sub>32</sub> (E)	8	#4	21'-2"	
h <sub>33</sub> (E)	14	#4	20'-6"	
n <sub>30</sub> (E)	90	#7	7'-0"	
s <sub>11</sub> (E)	22	#4	5'-3"	
t <sub>30</sub> (E)	102	#6	10'-3"	
t <sub>31</sub> (E)	52	#4	10'-3"	
v <sub>10</sub> (E)	21	#4	7'-8"	
v <sub>11</sub> (E)	16	#4	5'-2"	
v <sub>13</sub> (E)	4	#4	14'-9"	
v <sub>14</sub> (E)	32	#4	6'-9"	
v <sub>30</sub> (E)	24	#7	13'-0"	
v <sub>31</sub> (E)	13	#4	13'-0"	
v <sub>32</sub> (E)	22	#7	12'-9"	
v <sub>33</sub> (E)	12	#4	12'-9"	
w <sub>30</sub> (E)	12	#4	42'-10"	
w <sub>31</sub> (E)	12	#4	44'-7"	
x <sub>10</sub> (E)	50	#4	6'-3"	
x <sub>11</sub> (E)	6	#4	26'-0"	
Concrete Box Culverts	Cu. Yd.		79.1	
Reinforcement Bars, Epoxy Coated	Pound		9,350	

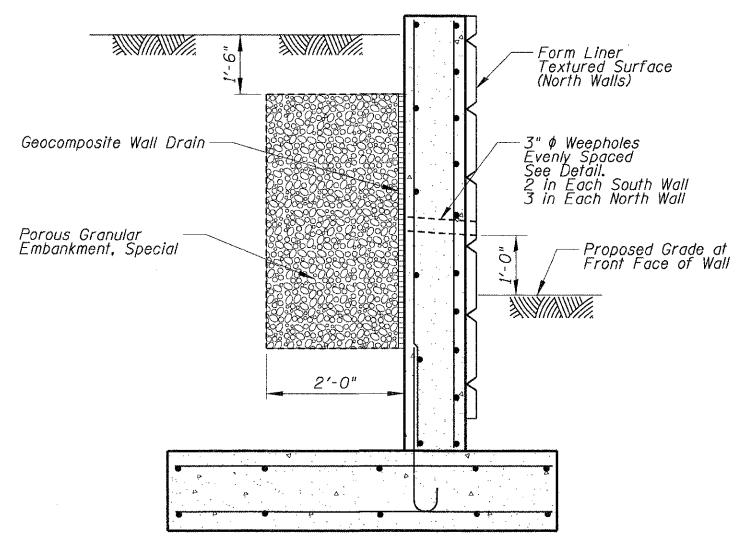


HALF LONG. SECTION  
SHOWING SHORT END OF BARREL  
Dimensions at Rt. L's to  $\phi$  Roadway

HALF LONG. SECTION  
SHOWING LONG END OF BARREL  
Dimensions at Rt. L's to  $\phi$  Roadway

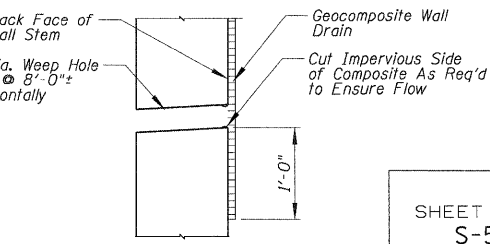
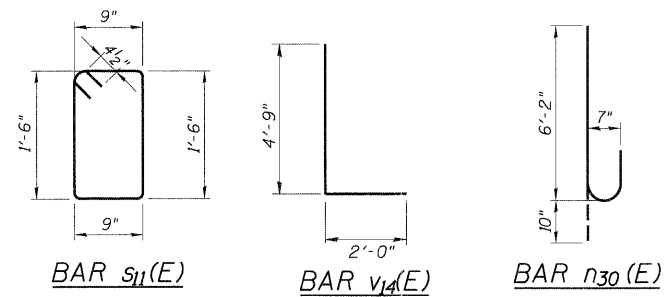


ELEVATION



WEEPHOLE DETAIL  
(Typical North & South End Sections)

Note: See Sheet S-3 for Bars a<sub>11</sub>(E), a<sub>10</sub>(E), x<sub>10</sub>(E) and x<sub>11</sub>(E) details.



WEEPHOLE DRAIN DETAIL

NOTES

Reinforcement bars shall conform to the requirements of ASTM A 706 Gr 60.  
Reinforcement bars designated (E) shall be epoxy coated.  
E.F. = Each Face  
I.F. = Inside Face  
O.F. = Outside Face  
F.F. = Front Face  
B.F. = Back Face

NORTH END SECTION  
EDGEWOOD DRIVE OVER  
RATT CREEK TRIBUTARY  
F.A.U. RTE. 4010  
SECTION 09-00078-00-WR  
MCHENRY COUNTY  
STA. 129+49.07

DESIGNED	200
CHECKED	EXAMINED
DRAWN	PASSED
CHECKED	ENGINEER OF BRIDGE DESIGN
	ENGINEER OF BRIDGES AND STRUCTURES

SHEET NO. S-5 SHEETS	F.A. RTE.	SECTION	COUNTY	TOTAL SHEETS	SHEET NO.
	4010	09-00078-00-WR	MCHENRY	128	84
CONTRACT NO. 63655					
FED. ROAD DIST. NO. ILLINOIS FED. AID PROJECT					