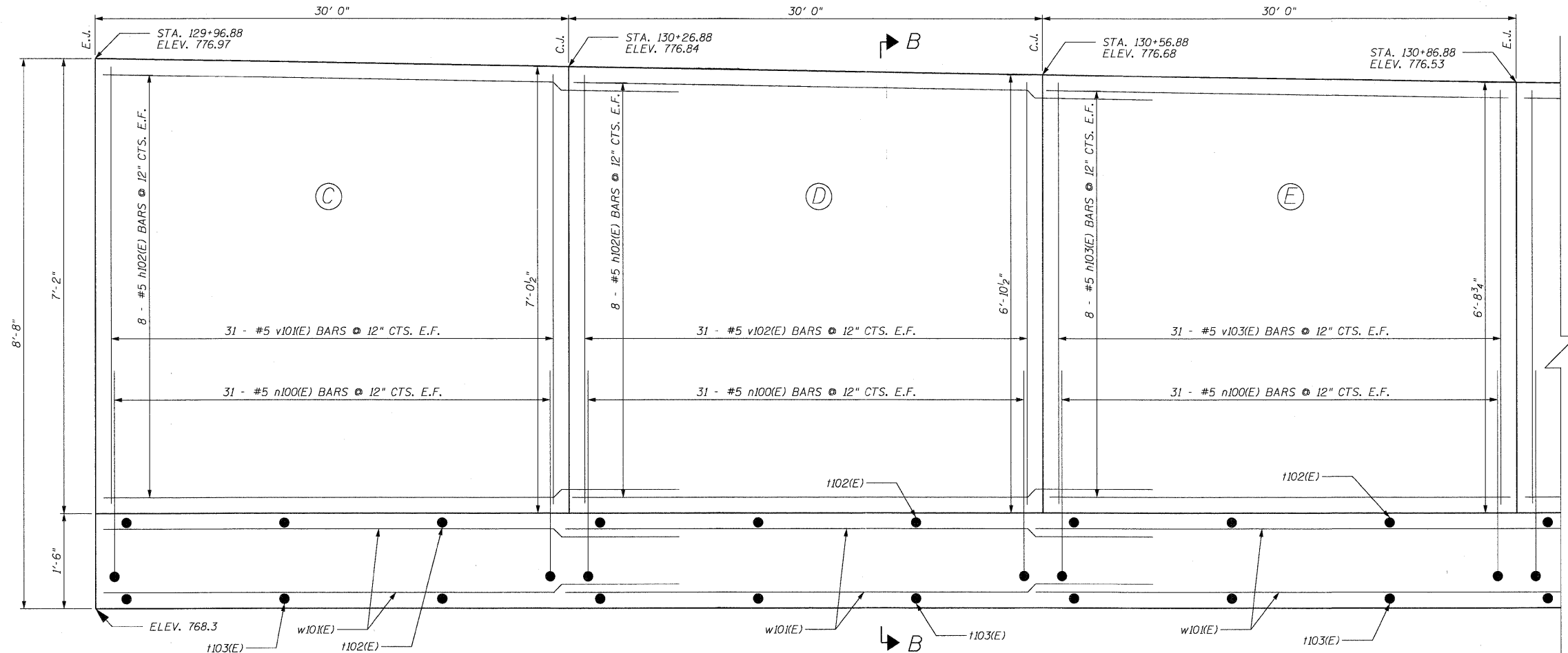
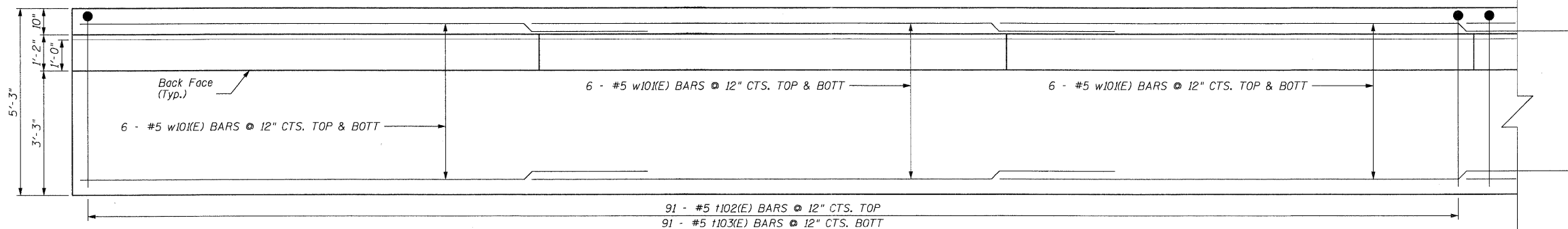


STATE OF ILLINOIS  
DEPARTMENT OF TRANSPORTATION



PARTIAL ELEVATION  
(Facing North)



PARTIAL PLAN



PARTIAL PLAN AND ELEVATION

EDGEWOOD DRIVE OVER  
RATT CREEK TRIBUTARY  
F.A.U. RTE. 4010  
SECTION 09-00078-00-WR  
MCHENRY COUNTY

STA. 129+00.00 TO STA. 134+00.00

DESIGNED -	200
CHECKED -	EXAMINED
DRAWN -	PASSED
CHECKED -	

ENGINEER OF BRIDGE DESIGN  
ENGINEER OF BRIDGES AND STRUCTURES

SHEET NO. S-11 SHEETS	F.A. RTE.	SECTION	COUNTY	TOTAL SHEETS	SHEET NO.
	4010	09-00078-00-WR	MCHENRY	128	90
CONTRACT NO. 63655					
FED. ROAD DIST. NO.		ILLINOIS FED. AID PROJECT			