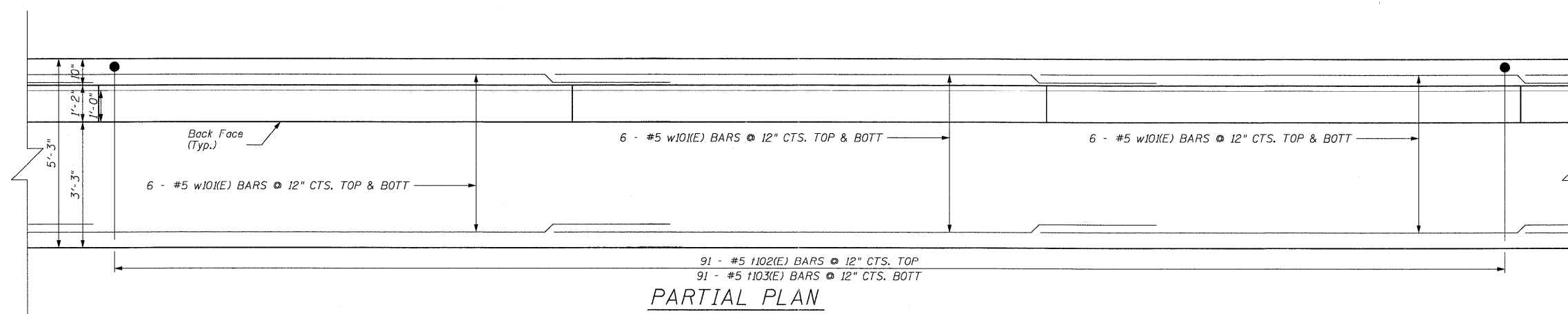
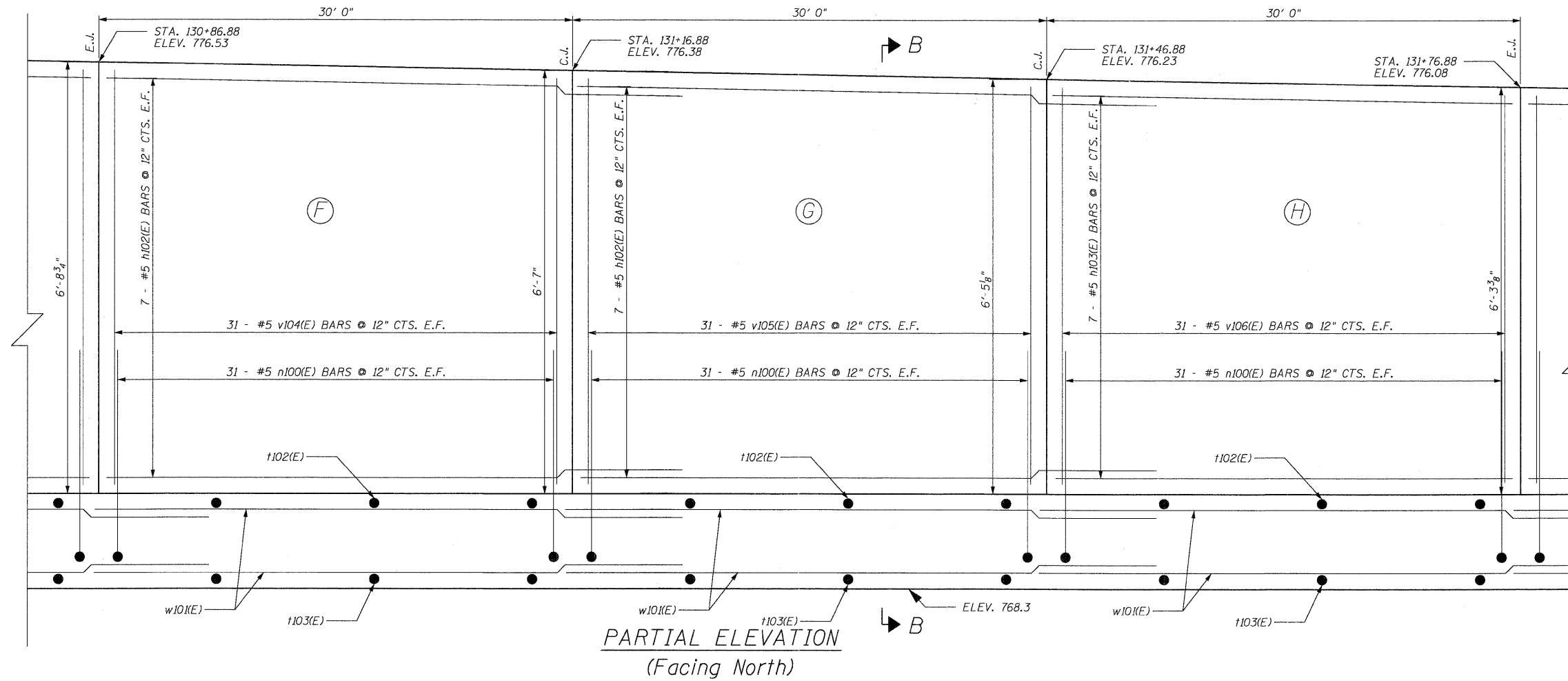


STATE OF ILLINOIS
DEPARTMENT OF TRANSPORTATION



PARTIAL PLAN AND ELEVATION

EDGEWOOD DRIVE OVER
RATT CREEK TRIBUTARY
F.A.U. RTE. 4010
SECTION 09-00078-00-WR
MCHENRY COUNTY
STA. 129+00.00 TO STA. 134+00.00

DESIGNED -	200
CHECKED -	EXAMINED
DRAWN -	PASSED
CHECKED -	ENGINEER OF BRIDGES AND STRUCTURES

SHEET NO. S-12 SHEETS	F.A. RTE.	SECTION	COUNTY	TOTAL SHEETS	SHEET NO.
	4010	09-00078-00-WR	MCHENRY	128	91
CONTRACT NO. 63655					
FED. ROAD DIST. NO. ILLINOIS FED. AID PROJECT					