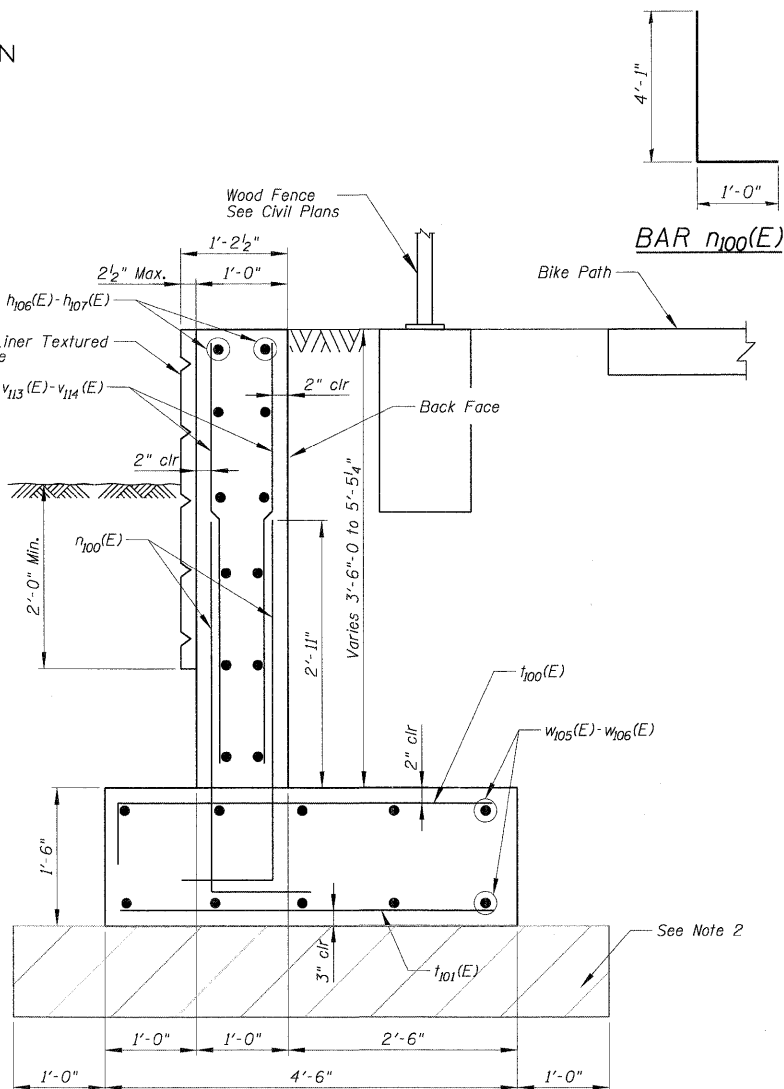
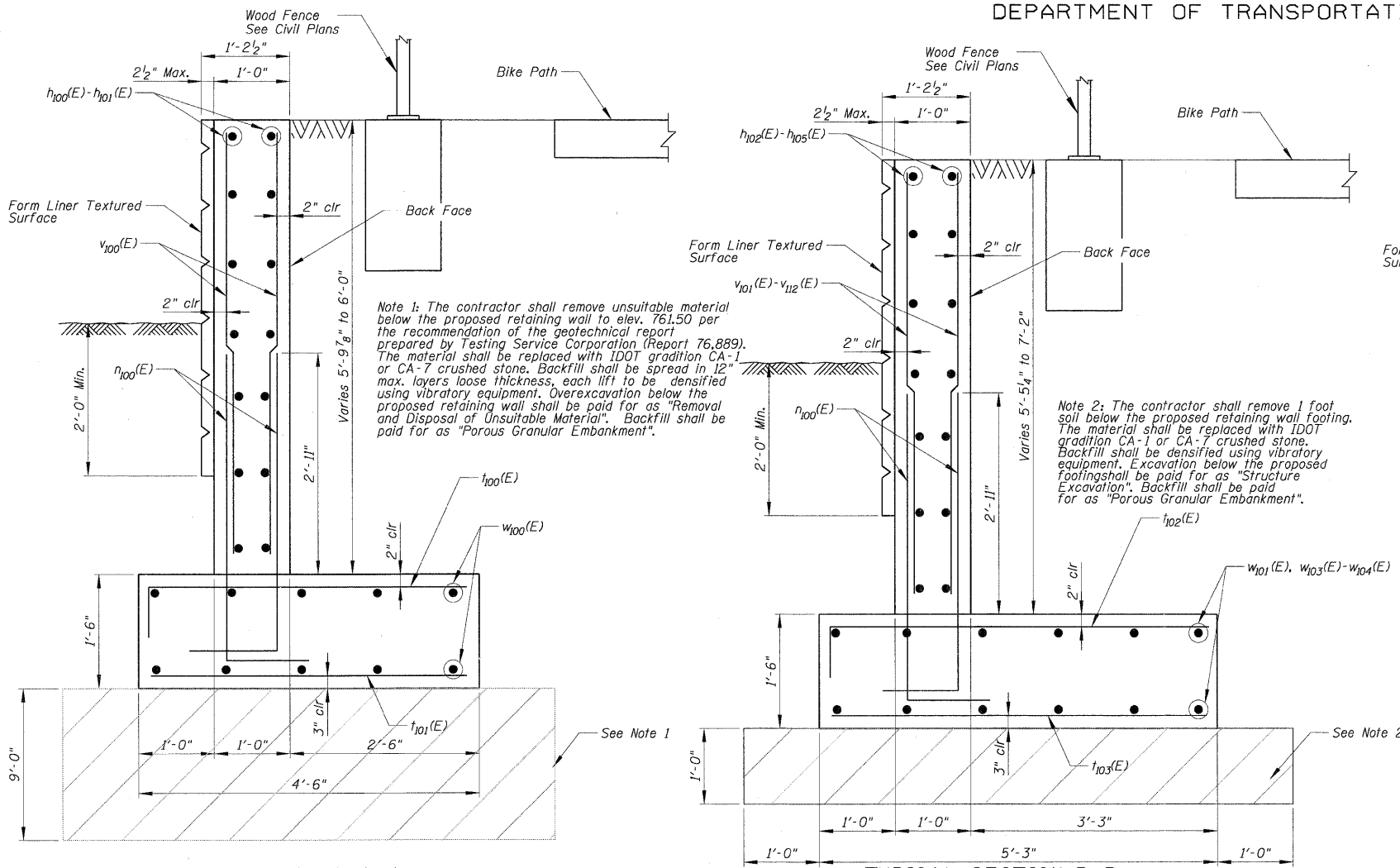
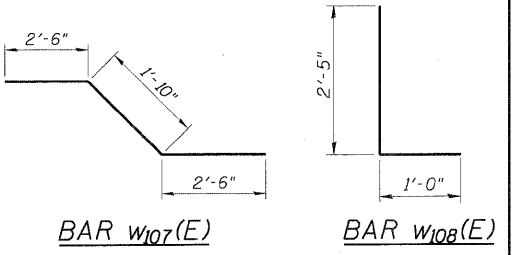
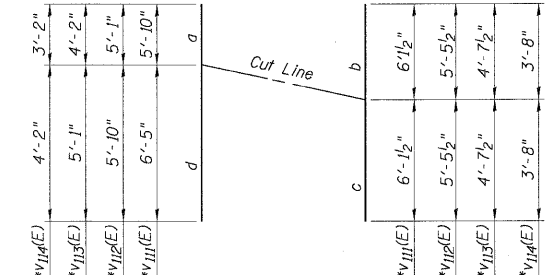
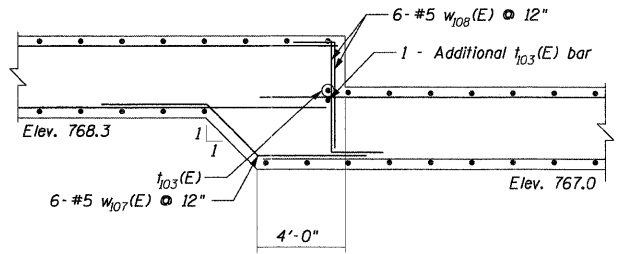
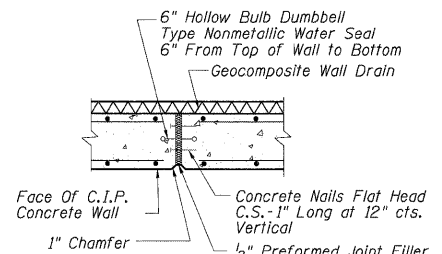
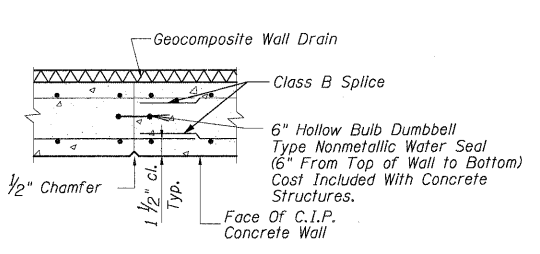


STATE OF ILLINOIS
DEPARTMENT OF TRANSPORTATION



BILL OF MATERIAL

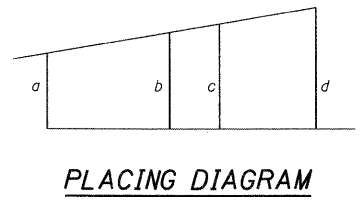
Bar	No.	Size	Length	Shape
$h_{100}(E)$	14	#5	20'-11"	
$h_{101}(E)$	14	#5	17'-10"	
$h_{102}(E)$	104	#5	32'-9"	
$h_{103}(E)$	44	#5	29'-8"	
$h_{104}(E)$	14	#5	21'-9"	
$h_{105}(E)$	14	#5	18'-8"	
$h_{106}(E)$	12	#5	35'-3"	
$h_{107}(E)$	10	#5	32'-2"	
$n_{100}(E)$	908	#5	4'-11"	
$t_{100}(E)$	103	#5	4'-10"	
$t_{101}(E)$	103	#5	4'-0"	
$t_{102}(E)$	342	#5	5'-7"	
$t_{103}(E)$	343	#5	4'-9"	
$v_{100}(E)$	76	#5	5'-7"	
$v_{101}(E)$	62	#5	6'-9"	
$v_{102}(E)$	62	#5	6'-7"	
$v_{103}(E)$	62	#5	6'-5"	
$v_{104}(E)$	62	#5	6'-3"	
$v_{105}(E)$	62	#5	6'-1"	
$v_{106}(E)$	62	#5	5'-11"	
$v_{107}(E)$	62	#5	5'-9"	
$v_{108}(E)$	62	#5	5'-8"	
$v_{109}(E)$	40	#5	5'-5"	
$v_{110}(E)$	40	#5	5'-3"	
$v_{111}(E)$	32	#5	12'-3"	
$v_{112}(E)$	32	#5	10'-11"	
$v_{113}(E)$	34	#5	9'-3"	
$v_{114}(E)$	34	#5	7'-4"	
$w_{100}(E)$	10	#5	25'-9"	
$w_{101}(E)$	106	#5	32'-9"	
$w_{102}(E)$	12	#5	37'-8"	
$w_{103}(E)$	12	#5	36'-7"	
$w_{104}(E)$	2	#5	29'-8"	
$w_{105}(E)$	10	#5	35'-3"	
$w_{106}(E)$	10	#5	32'-2"	
$w_{107}(E)$	6	#5	6'-10"	
$w_{108}(E)$	12	#5	3'-5"	
Concrete Structures		Cu. Yd.	244.5	
Reinforcement Bars, Epoxy Coated		Pound	27,360	



RETAINING WALL LAP SPLICE SCHEDULE

BAR	LAP
#5	2'-11"

DESIGNED -	200
CHECKED -	EXAMINED
DRAWN -	PASSED
CHECKED -	ENGINEER OF BRIDGE DESIGN
	ENGINEER OF BRIDGES AND STRUCTURES



CUTTING DIAGRAM

*Discard the shortest pieces.
Cut bars on front face and bars on back face separately.

SECTIONS AND DETAILS

EDGEWOOD DRIVE OVER
RATT CREEK TRIBUTARY
F.A.U. RTE. 4010
SECTION 09-00078-00-WR
MCHENRY COUNTY

STA. 129+00.00 TO STA. 134+00.00

SHEET NO. S-15 SHEETS	F.A. RTE.	SECTION	COUNTY	TOTAL SHEETS	SHEET NO.
	4010	09-00078-00-WR	MCHENRY	128	94
CONTRACT NO. 63655					
FED. ROAD DIST. NO.		ILLINOIS FED. AID PROJECT			