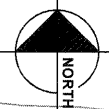
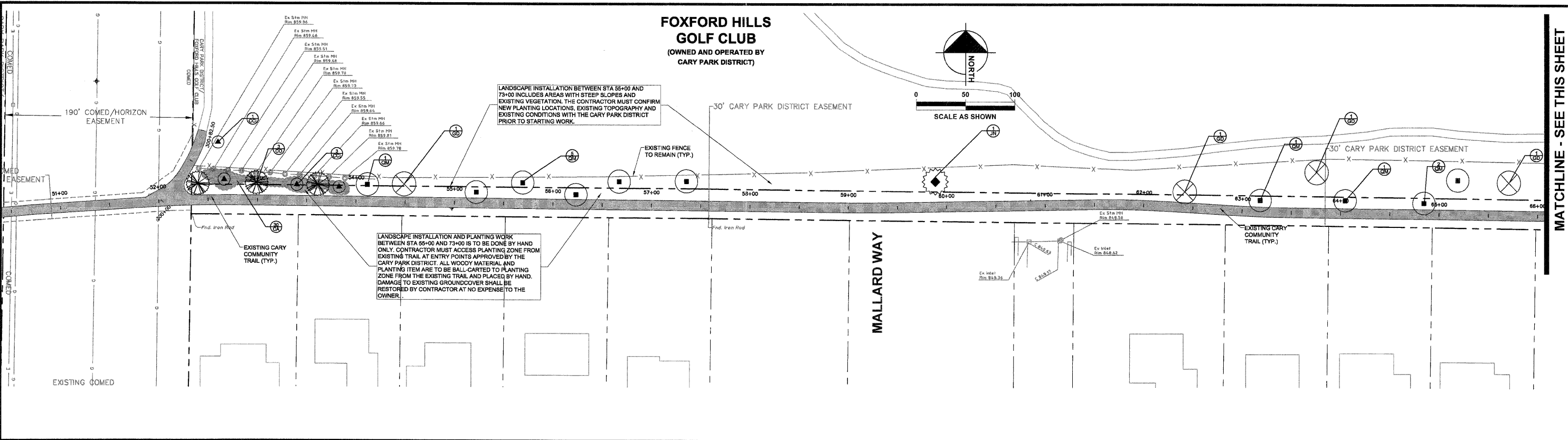


**FOXFORD HILLS GOLF CLUB**  
(OWNED AND OPERATED BY CARY PARK DISTRICT)

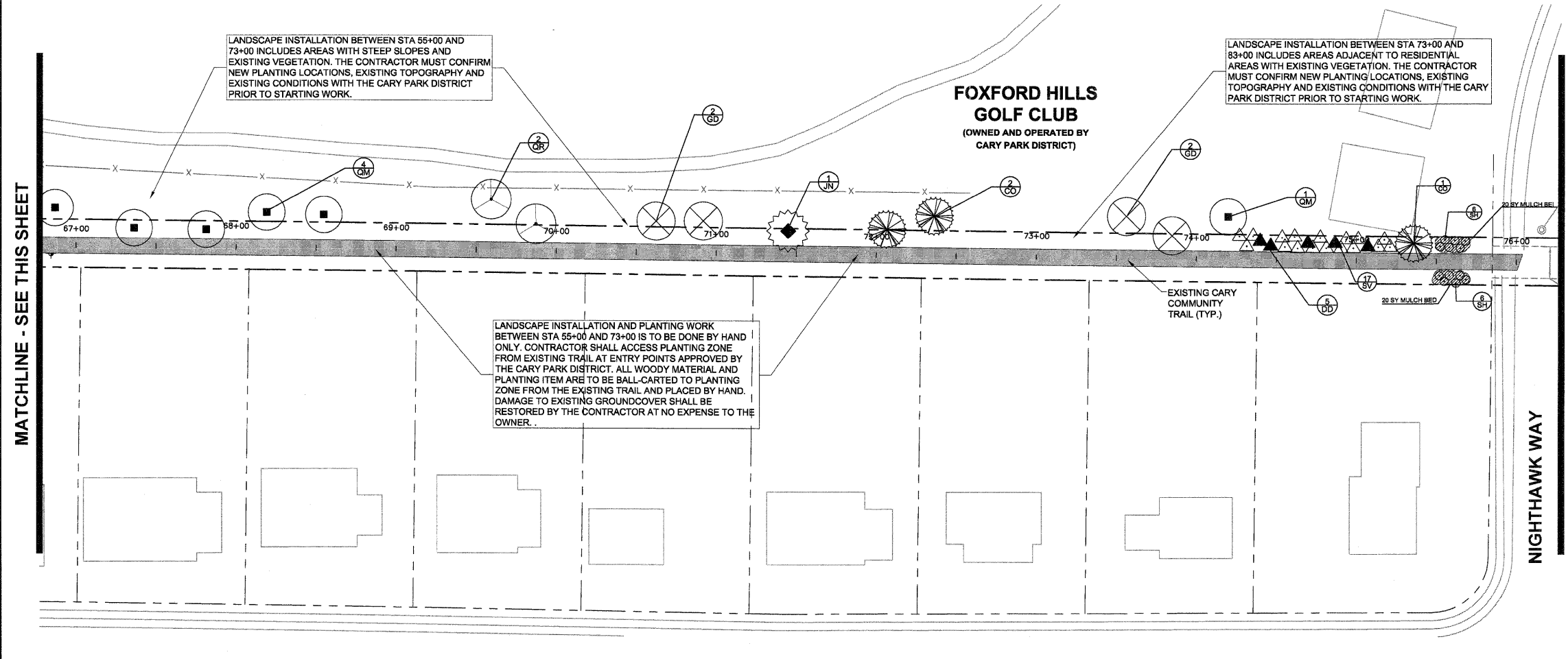


0 50 100  
SCALE AS SHOWN



MATCHLINE - SEE THIS SHEET

**FOXFORD HILLS GOLF CLUB**  
(OWNED AND OPERATED BY CARY PARK DISTRICT)



MATCHLINE - SEE THIS SHEET

MATCHLINE - SEE SHEET 5

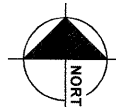
**LANDSCAPING LEGEND:**

- PROPOSED LANDSCAPE ITEM (SEE SHEET 2 FOR PLANTING LEGEND AND SCHEDULE SHEET)
- EXISTING TRAIL
- EXISTING TREE LINE

- GENERAL NOTES**
- THE CONTRACTOR SHALL REFERENCE THE CARY COMMUNITY TRAIL ENGINEERING PLANS DATED 10-02-2009 (ILLINOIS DEPARTMENT OF TRANSPORTATION PROJECT 1E-0001708) PRIOR TO STARTING WORK. PLANS ARE AVAILABLE UPON REQUEST FROM THE CARY PARK DISTRICT.
  - THE CONTRACTOR SHALL CONFIRM EXISTING TRAIL CONDITIONS AND NEW LANDSCAPING ITEM PLACEMENT LOCATIONS WITH THE CARY PARK DISTRICT PRIOR TO STARTING CONSTRUCTION. CONTACT DAVE RAICA, CARY PARK DISTRICT, AT 847-839-4901

**BENCHMARKS**

- SOURCE BENCHMARK**  
DESCRIPTION: MANHOLE #46 FROM THE ASBUILT RECORD DRAWINGS BY MANHARD CONSULTING LTD DATED 3-6-07 FOR THE FOXFORD HILLS SUBDIVISION-PHASE 1 IN THE VILLAGE OF CARY, ILLINOIS.  
LOCATION: 120' NORTHEAST OF THE OAKMAN DRIVE AND PARKSTONE DRIVE INTERSECTION ON OAKMAN DRIVE.  
ELEVATION: 861.45
- HE CP #1**  
DESCRIPTION: "PK" NAIL IN EDGE OF PAVEMENT.  
LOCATION: 592' WEST OF THE INTERSECTION OF RAWSON BRIDGE ROAD AND MINK TRAIL, 45' SOUTHWEST OF TREE, 27' SOUTHEAST OF IRON ROD, AND 10' SOUTH OF CONCRETE WALK.  
ELEVATION: 860.97
- HE CP #8**  
DESCRIPTION: RAIL ROAD SPIKE.  
LOCATION: NORTHWEST CORNER OF INTERSECTION OF CRYSTAL LAKE ROAD AND RAWSON BRIDGE ROAD, 22' SOUTHEAST OF FENCE CORNER, 18' SOUTHWEST OF POWER POLE, AND 11' NORTHWEST OF PAVEMENT.  
ELEVATION: 823.23
- SITE BENCHMARKS**  
HE CP #100  
DESCRIPTION: IRON PIPE.  
LOCATION: 1000' EAST OF THE INTERSECTION OF 1ST AND THREE OAKS ROAD, 584' NORTH OF THE NORTH SIDE OF THREE OAKS ROAD, 31' NORTHEAST OF STORM MANHOLE, AND 26' NORTHWEST OF POWER POLE.  
ELEVATION: 854.94



0 40 80  
SCALE AS SHOWN



DESIGNED - JWH	REVISED
DRAWN - JKM	REVISED
CHECKED - JWH	REVISED
DATE - 10/21/2011	REVISED

**STATE OF ILLINOIS**  
**DEPARTMENT OF TRANSPORTATION**

**CARY PARK DISTRICT**  
**CARY TRAIL LANDSCAPING**

**LANDSCAPE PLAN**  
**STA. 50+00 TO STA. 66+50**  
**STA. 66+50 TO STA. 76+50**

SECTION	COUNTY	TOTAL SHEETS	SHEET NO.
06-P4001-01-BT	MCHENRY	7	5
FED. ROAD DIST. NO. 1	ILLINOIS	CONTRACT NO. 63856	