

**SOIL AND MATERIAL CONSULTANTS, INC.**  
Arlington Heights, Illinois (847) 870-2544

**SOIL BORING LOG 1**  
Logged By: DA Page: 1 of 1

Client: Tebrugge Engineering File No. 19017 Date Drilled: 8/1/07

Reference: Austin Avenue Bridge Structure No. 045-3087 Aurora, IL

Equipment:  CME 45B  CME 55  Hand Auger  Other

Comments:

Depth, ft.	CLASSIFICATION	standard penetration	moisture content	dry unit weight	unconfined compressive strength	penetration reading, tons/sq.ft.
Elevation 694.7' Existing Surface	(a & b) see below	X	Δ	⊗	○	
5	Brown clay & silt, trace sand & gravel, damp, tough - Fill					1.0 2.0 3.0 4.0
4	Brown silt, some clay, trace sand, damp, very loose - Fill					
4	22.4					
10	Dark gray-black silt, some clay, trace sand & gravel, damp-very damp, loose - Fill					
7	20.5					
15	Brown to gray clay, some silt, trace sand & gravel, damp, hard					
17	17.3	116.1	7.8			
14	13.9	123.4	7.7			
20	Gray clay & silt, trace sand & gravel, damp, very tough					
16	10.6	135.1	2.0			
18	10.1					
25	Gray clay, some silt, trace sand & gravel, damp, hard					
21	12.7	122.8	6.4			
19	14.9	120.7	5.7			
30	Gray clay, some silt, trace sand & gravel, damp, very tough					
14	18.5	115.0	3.8			
17	9.3					
35	Brown sand, trace silt & gravel, damp-very damp, loose					
16	8.8					
6	12.9					
40	Refusal	50+				

(a) Bituminous concrete - 6.0" Water encountered at 36.0 feet during drilling operations (W.D.)  
 (b) Base-brown sand & gravel, damp Water recorded at 36.0 feet on completion of drilling operations (A.D.)  
 (c) Base-brown sand & gravel, damp Water recorded at 36.0 feet on completion of drilling operations (A.D.)  
 (d) Gray clay, some silt, trace sand & gravel, damp, hard Water recorded at 36.0 feet on completion of drilling operations (A.D.)

**SOIL AND MATERIAL CONSULTANTS, INC.**  
Arlington Heights, Illinois (847) 870-2544

**SOIL BORING LOG 2**  
Logged By: DA Page: 1 of 1

Client: Tebrugge Engineering File No. 19017 Date Drilled: 8/1/07

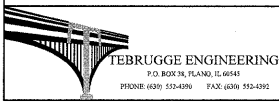
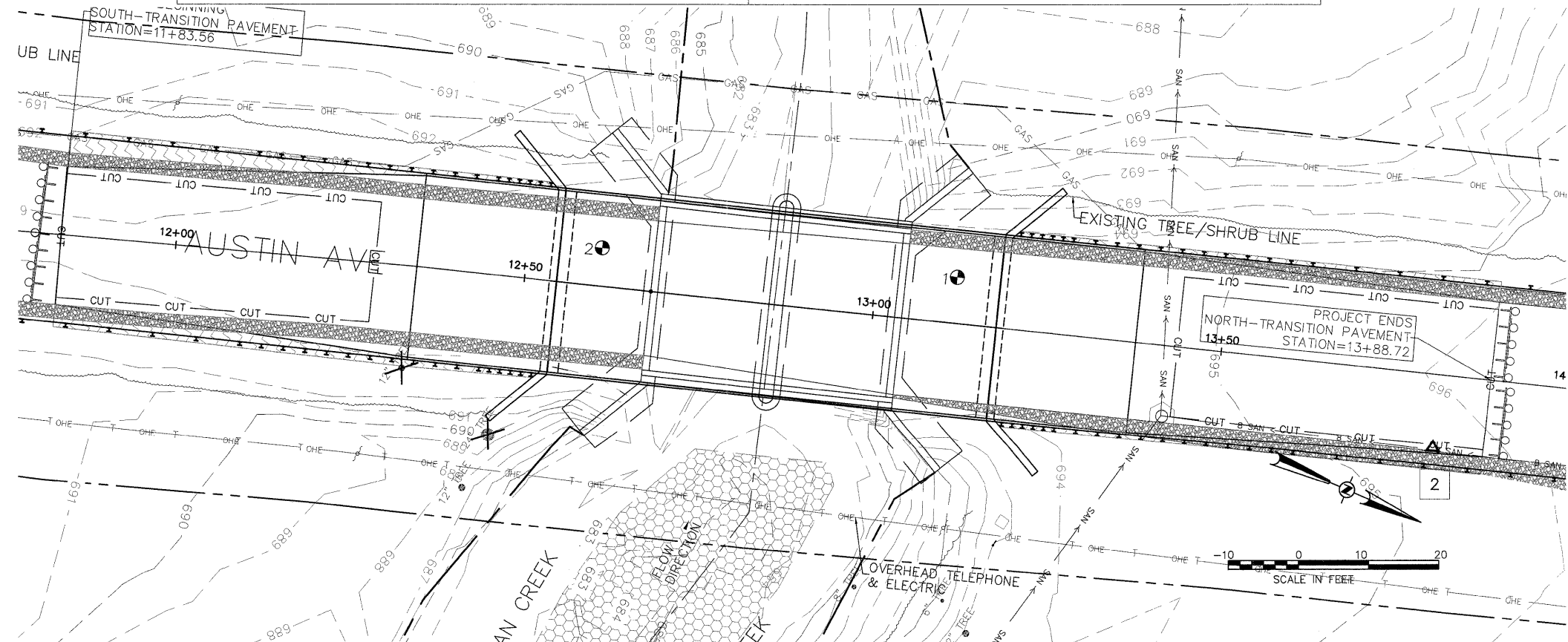
Reference: Austin Avenue Bridge Structure No. 045-3087 Aurora, IL

Equipment:  CME 45B  CME 55  Hand Auger  Other

Comments:

Depth, ft.	CLASSIFICATION	standard penetration	moisture content	dry unit weight	unconfined compressive strength	penetration reading, tons/sq.ft.
Elevation 694.0' Existing Surface	(a & b) see below	X	Δ	⊗	○	
6	Brown-gray silt, some clay, trace sand, damp-very damp, loose - Fill					1.0 2.0 3.0 4.0
5	20.3					
5	20.9					
5	24.7					
10	Brown clay, some silt, trace sand & gravel, damp, tough					
7	17.1	114.5	1.8			
21	14.6	118.9	6.1			
15	10.6					
17	9.5					
20	10.1					
17	13.7	121.1	4.7			
15	15.1	122.0	4.4			
17	18.1	114.4	2.9			
11	15.2	119.0	4.2			
17.4						
18.9		107.6	5.4			
10	8.7					
12	11.2					
17	9.1					

(a) Bituminous concrete - 6.0" Water encountered at 36.0 feet during drilling operations (W.D.)  
 (b) Base-brown sand & gravel, damp Water recorded at 36.0 feet on completion of drilling operations (A.D.)  
 (c) Gray silt, some clay, trace sand & gravel, damp, medium dense Water recorded at 36.0 feet on completion of drilling operations (A.D.)  
 (d) Gray clay, some silt, trace sand & gravel, damp, hard Water recorded at 36.0 feet on completion of drilling operations (A.D.)



DESIGNED - JJT	REVISED -
DRAWN - ASK	REVISED -
CHECKED - JJT	REVISED -
DATE - 10/7/2011	REVISED -

STATE OF ILLINOIS  
DEPARTMENT OF TRANSPORTATION

SOIL BORINGS  
AUSTIN AVE OVER INDIAN CREEK  
SCALE: 1" = 10' SHEET NO. 1 OF 1 STA. 11+83.56 TO STA. 13+88.72

F.A.P. RTE.	SECTION	COUNTY	TOTAL SHEETS	SHEET NO.
	03-01130-00-BR	KANE	33	32
D-91-352-04		CONTRACT NO. 63660		
FED. ROAD DIST. NO. - ILLINOIS FED. AID PROJECT				