

STATE OF ILLINOIS  
DEPARTMENT OF TRANSPORTATION  
DIVISION OF HIGHWAYS

**PROPOSED  
HIGHWAY PLANS**

FAI ROUTE 90 (I-90)  
SECTION (X2-1) R  
PROJECT: ACNHI-090-1(032)000  
ROADWAY & BRIDGE RECONSTRUCTION  
WINNEBAGO COUNTY

F.A.I. RTE.	SECTION	COUNTY	TOTAL SHEETS	SHEET NO.
90	(X2-1) R	WINNEBAGO	510	1
ILLINOIS CONTRACT NO. 64C29			*510 + 3 = 513	

D-92-066-06

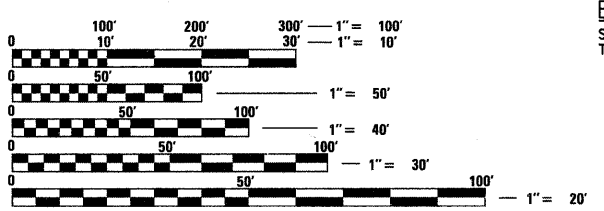


PROJECT MANAGER: McCLURE ENGINEERING: PATRICK D. STEWART (815) 398-2332  
PROJECT ENGINEER: IDOT: MASOOD AHMAD (815) 284-5510 SENIOR SQUAD LEADER : SAMER ABDULLAH (815) 284-5935

FOR INDEX OF SHEETS, SEE SHEET NO. IN01  
FOR STATE STANDARDS, SEE SHEET NO. IN02

**TRAFFIC VOLUMES:**  
I-90 CURRENT ADT: 39,700 (2009) WITH 34% TRUCKS

**DESIGN DESIGNATION**  
FAI ROUTE 90 (I-90) - 7755(32) INTERSTATE 112.2 (PCC-20)  
IL 75 RAMPS - 530(32) RAMP 17.26 (PCC-20)  
VISITOR CENTER RAMPS - 60(32) RAMP 0.27 (PCC-20)  
ROCKTON ROAD RAMPS - 430(32) RAMP 7.69 (PCC-20)



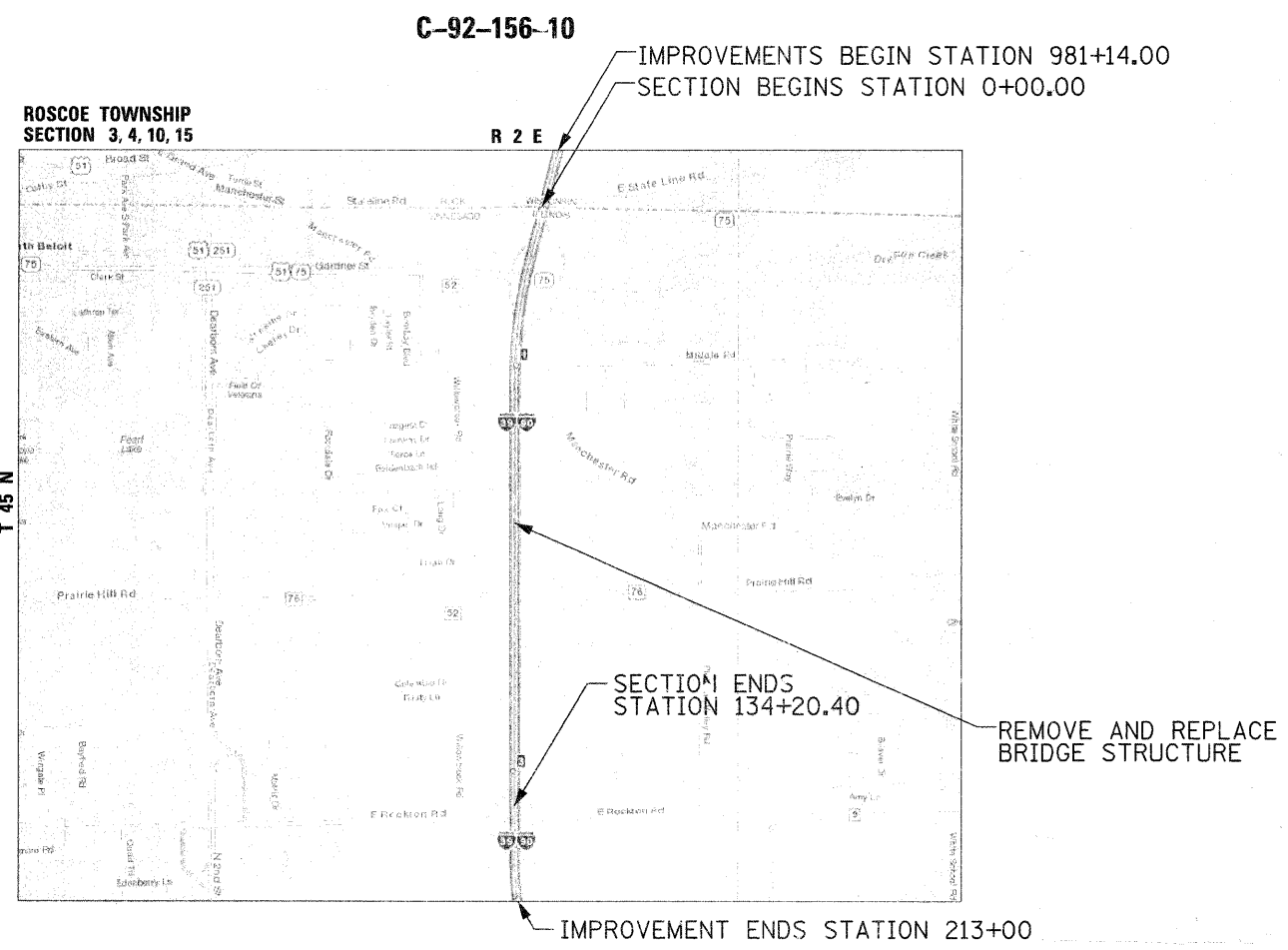
FULL SIZE PLANS HAVE BEEN PREPARED USING STANDARD ENGINEERING SCALES. REDUCED SIZED PLANS WILL NOT CONFORM TO STANDARD SCALES. IN MAKING MEASUREMENTS ON REDUCED PLANS, THE ABOVE SCALES MAY BE USED.

J.U.L.I.E.  
JOINT UTILITY LOCATION INFORMATION FOR EXCAVATION  
1-800-892-0123  
OR 811

CONTRACT NO. 64C29

**STATION EQUATION**  
EB I-90 CENTERLINE STA 0+00.00 =  
WB I-90 CENTERLINE STA 1000+00.00

**BRIDGE WORK**  
STRUCTURE NO.'S 101-0001 & 101-0002 ARE TO BE REMOVED AND REPLACED



GROSS LENGTH (I-90) = 23,186.00 FT. = 4.39 MILE  
NET LENGTH (I-90) = 13,420.40 FT. = 2.54 MILE

STATE OF ILLINOIS  
DEPARTMENT OF TRANSPORTATION  
DIVISION OF HIGHWAYS

SUBMITTED October 26 20 11  
Eric S. Therkildsen  
DEPUTY DIRECTOR OF HIGHWAYS, REGION ENGINEER

December 9 20 11  
Scott E. Stitt P.E. Ia  
acting ENGINEER OF DESIGN AND ENVIRONMENT

December 9 20 11  
William R. Fryer Ia  
Interim DIRECTOR OF HIGHWAYS, CHIEF ENGINEER

PRINTED BY THE AUTHORITY  
OF THE STATE OF ILLINOIS

Rev. 1-9-12