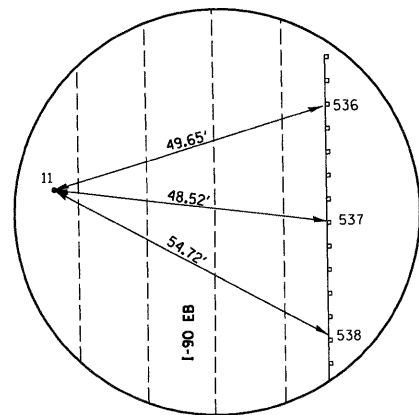
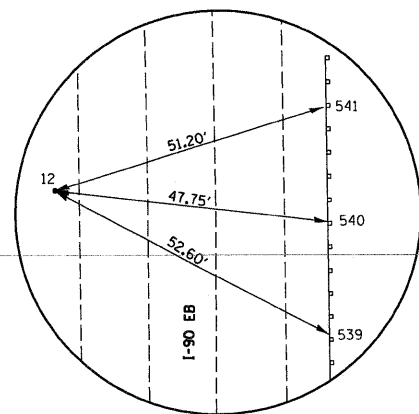


HORIZONTAL CONTROL POINT NO. 10  
STA. 88+20.32

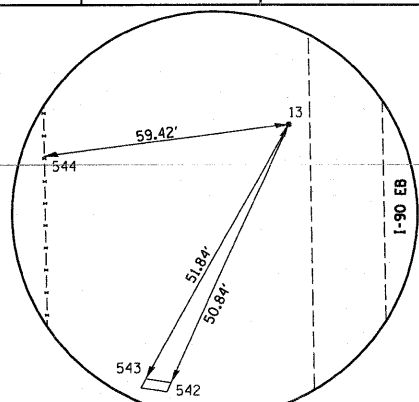


HORIZONTAL CONTROL POINT NO. 11  
STA. 98+82.00

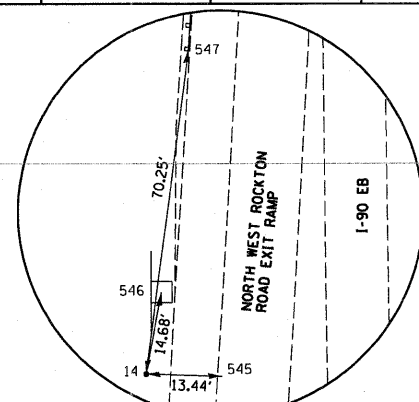


HORIZONTAL CONTROL POINT NO. 12  
STA. 109+99.87

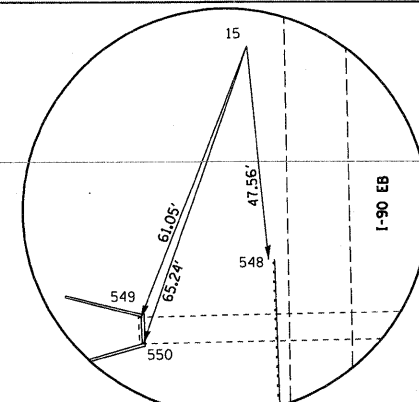
POINT	NORTH	EAST	CHAIN	STATION	OFFSET	DESCRIPTION
535	2116582.9419	2612594.6064	FA190	88+83.29 R 2	66.9147' RT	HEADWALL, HEADWALL
536	2115599.0419	2612659.9230	FA190	98+68.10 R 2	17.301' RT	GUARDRAIL STEEL PLATE BEAM, GUARDRAIL STEEL PLATE BEAM
537	2115578.8529	2612660.6886	FA190	98+88.30 R 2	16.8575' RT	GUARDRAIL STEEL PLATE BEAM, GUARDRAIL STEEL PLATE BEAM
538	2115558.6817	2612660.8520	FA190	99+08.47 R 2	17.0159' RT	GUARDRAIL STEEL PLATE BEAM, GUARDRAIL STEEL PLATE BEAM
539	2114445.1862	2612678.2910	FA190	110+22.10 R 2	17.3409' RT	GUARDRAIL STEEL PLATE BEAM, GUARDRAIL STEEL PLATE BEAM
540	2114465.7834	2612678.0123	FA190	110+01.51 R 2	17.291' RT	GUARDRAIL STEEL PLATE BEAM, GUARDRAIL STEEL PLATE BEAM
541	2114486.3788	2612677.5160	FA190	109+80.90 R 2	17.4587' RT	GUARDRAIL STEEL PLATE BEAM, GUARDRAIL STEEL PLATE BEAM
542	2113367.5531	2612624.6616	FA190	120+98.75 R 2	88.1532' RT	SIGN FOUNDATION, SIGN FOUNDATION
543	2113367.5470	2612622.4899	FA190	120+98.72 R 2	90.3248' RT	SIGN FOUNDATION, SIGN FOUNDATION
544	2113403.9379	2612588.2733	FA190	120+61.78 R 2	123.9565' RT	FENCE POST, FENCE POST
545	2112256.3740	2612663.1317	FA190	132+10.40 R 2	67.4129' RT	FENCE POST, FENCE POST
546	2112271.2362	2612652.4335	FA190	131+95.37 R 2	77.8727' RT	SIGN, SIGN
547	2112326.7243	2612656.6599	FA190	131+39.95 R 2	72.7617' RT	GUARDRAIL STEEL PLATE BEAM, GUARDRAIL STEEL PLATE BEAM
548	2111431.5549	2612679.2463	FA190	140+35.37 R 2	64.4574' RT	GUARDRAIL STEEL PLATE BEAM, GUARDRAIL STEEL PLATE BEAM
549	2111421.2233	2612656.6278	FA190	140+45.34 R 2	87.2378' RT	HEADWALL, HEADWALL
550	2111416.6832	2612657.0714	FA190	140+49.88 R 2	86.8667' RT	HEADWALL, HEADWALL
551	2123680.5178	2613481.9414	FA190	16+48.93 R 2	705.8872' LT	PAVEMENT STATION NUMBER, PAVEMENT STATION NUMBER
552	2123717.2743	2613535.1570	FA190	16+00.32 R 2	751.6211' LT	TRAFFIC SIGNAL, TRAFFIC SIGNAL
553	2123713.0865	2613571.9373	FA190	15+97.57 R 2	788.5494' LT	HANDHOLE, HANDHOLE
554	2123756.8741	2613491.8710	FA190	15+67.37 R 2	701.8135' LT	PAVEMENT STATION NUMBER, PAVEMENT STATION NUMBER
555	2123856.3947	2612916.0630	FA190	15+75.87 R 2	117.5262' LT	BRIDGE DECK, BRIDGE DECK
556	2123759.1986	2612898.3441	FA190	16+75.63 R 2	117.5752' LT	BRIDGE DECK, BRIDGE DECK
557	2123759.3606	2612895.0845	FA190	16+76.04 R 2	114.3379' LT	PERM. SURVEY MARKER
558	2123800.5221	2612670.4544	FA190	16+75.02 R 2	114.03' RT	MANHOLE GRATE, MANHOLE GRATE
559	2123885.4907	2612685.6857	FA190	15+89.50 R 2	114.2815' RT	MANHOLE GRATE, MANHOLE GRATE
560	2123930.6995	2612444.4521	FA190	15+89.14 R 2	359.7145' RT	TRAFFIC SIGNAL, TRAFFIC SIGNAL
561	2123956.0509	2612404.9387	FA190	15+72.00 R 2	403.2079' RT	TRAFFIC SIGNAL CANTILEVER, TRAFFIC SIGNAL CANTILEVER
562	2123901.7205	2612347.5754	FA190	16+33.71 R 2	449.747' RT	TRAFFIC SIGNAL, TRAFFIC SIGNAL
563	2125588.0643	2612873.1809	FA190	998+90.65	292.858' RT	GUARDRAIL STEEL PLATE BEAM, GUARDRAIL STEEL PLATE BEAM
564	2125549.4318	2612861.9149	FA190	999+30.81	295.4808' RT	GUARDRAIL STEEL PLATE BEAM, GUARDRAIL STEEL PLATE BEAM
565	2125548.4424	2612849.3797	FA190	999+34.49	307.5034' RT	GUARDRAIL STEEL PLATE BEAM, GUARDRAIL STEEL PLATE BEAM
566	2125590.9442	2613467.4260	FA190	997+59.01	286.6299' LT	GUARDRAIL STEEL PLATE BEAM, GUARDRAIL STEEL PLATE BEAM
567	2125627.9871	2613471.7249	FA190	997+21.92	282.7959' LT	GUARDRAIL STEEL PLATE BEAM, GUARDRAIL STEEL PLATE BEAM
568	2125639.3185	2613605.1096	FA190	996+81.94	410.5517' LT	GUARDRAIL STEEL PLATE BEAM, GUARDRAIL STEEL PLATE BEAM
569	2111094.1413	2612249.9139	FA190	143+66.23 R 2	499.0625' RT	R.O.W. MARKER, R.O.W. MARKER
570	2111134.4079	2612233.2573	FA190	143+25.72 R 2	515.1026' RT	POWER POLE, POWER POLE



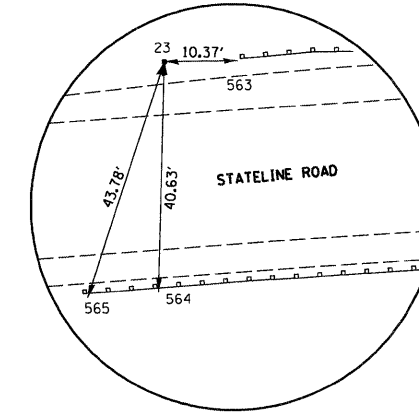
HORIZONTAL CONTROL POINT NO. 13  
STA. 120+53.41



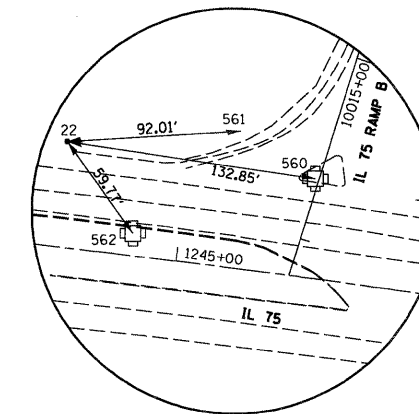
HORIZONTAL CONTROL POINT NO. 14  
STA. 132+09.74



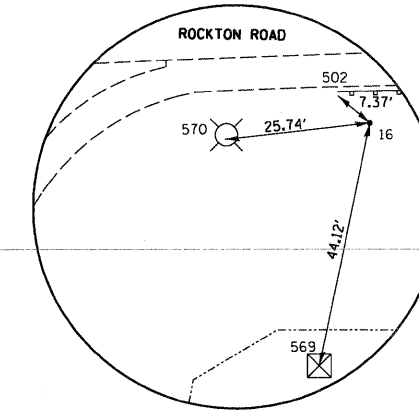
HORIZONTAL CONTROL POINT NO. 15  
STA. 139+87.86



HORIZONTAL CONTROL POINT NO. 23  
STA. 998+90.92



HORIZONTAL CONTROL POINT NO. 22  
STA. 15+93.47



HORIZONTAL CONTROL POINT NO. 16  
STA. 143+23.16