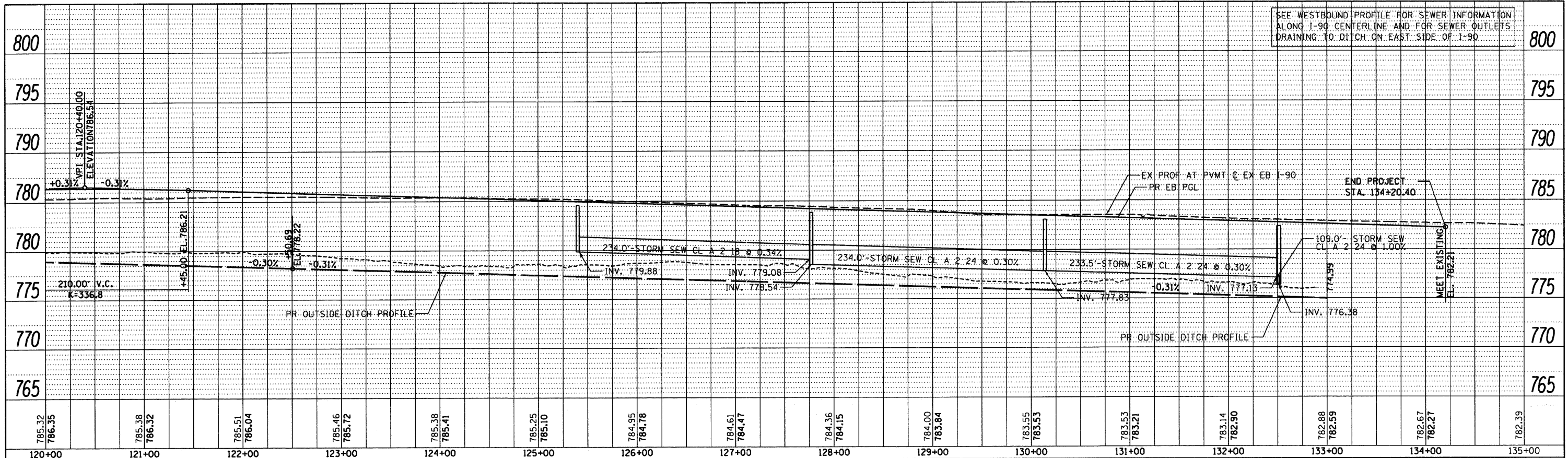


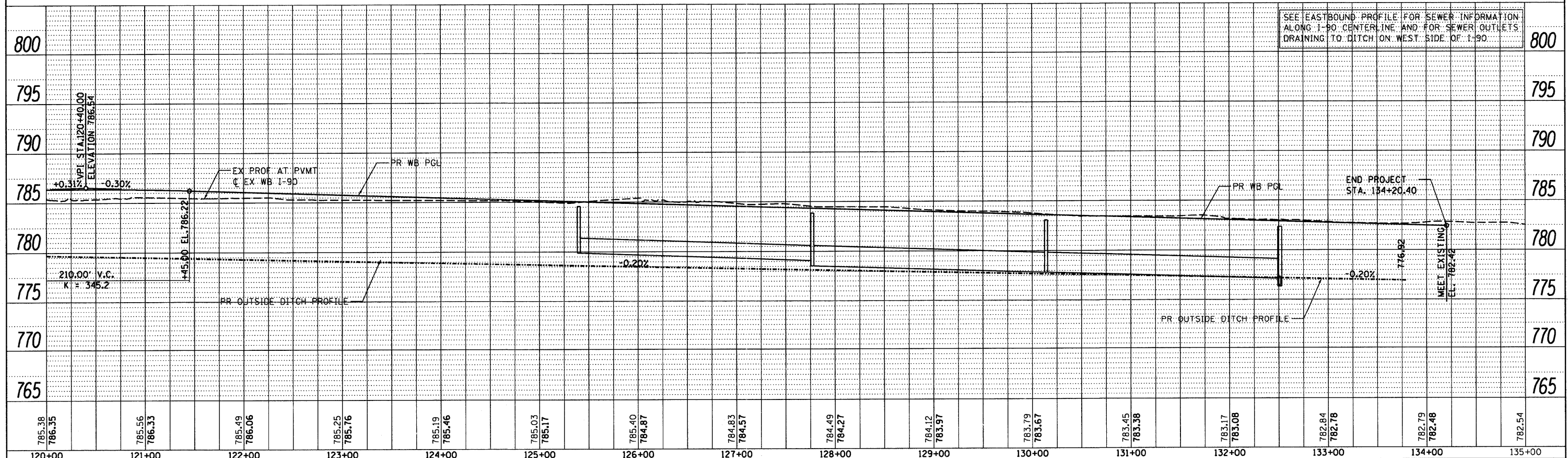
PLAN	SURVEYED	BY	DATE
	ALIGNED		
	NOTED		
	RT. OF WAY CHECKED		
	NO. _____		
	FILE NAME		



EASTBOUND PROFILE

WESTBOUND PROFILE

PROFILE	SURVEYED	BY	DATE
	PLOTTED		
	CHECKED		
	NO. _____		
	STRUCTURE NOTATIONS CHFD		



120+00	121+00	122+00	123+00	124+00	125+00	126+00	127+00	128+00	129+00	130+00	131+00	132+00	133+00	134+00	135+00
785.32 786.35	785.38 786.32	785.51 786.04	785.46 785.72	785.38 785.41	785.25 785.10	784.95 784.78	784.61 784.47	784.36 784.15	784.00 783.84	783.55 783.53	783.53 783.21	783.14 782.90	782.88 782.59	782.67 782.27	782.39

McClure LOCHNER
ENGINEERS ARCHITECTS INC.
CIVIL ENGINEERING CONSULTANTS

RWA
ROADWAY WORKS ASSOCIATES, INC.

OEI
OVERSEAS ENGINEERING INC.

USER NAME = .USERNAME.	DESIGNED -	REVISED -
PLOT SCALE = 50.0000' / IN.	DRAWN - BSL	REVISED -
PLOT DATE = 10/19/2011	CHECKED - PDS	REVISED -
	DATE - 10-21-2011	REVISED -

**STATE OF ILLINOIS
DEPARTMENT OF TRANSPORTATION**

SCALE:	SHEET NO.	OF	SHEETS	STA. 120+00	TO STA. 135+00
--------	-----------	----	--------	-------------	----------------

F.A. RTE.	SECTION	COUNTY	TOTAL SHEETS	SHEET NO.
90	(X2-1) R	WINNEBAGO	510	98
CONTRACT NO. 64C29				
ILLINOIS FED. AID PROJECT				

SEE WESTBOUND PROFILE FOR SEWER INFORMATION ALONG I-90 CENTERLINE AND FOR SEWER OUTLETS DRAINING TO DITCH ON EAST SIDE OF I-90

SEE EASTBOUND PROFILE FOR SEWER INFORMATION ALONG I-90 CENTERLINE AND FOR SEWER OUTLETS DRAINING TO DITCH ON WEST SIDE OF I-90