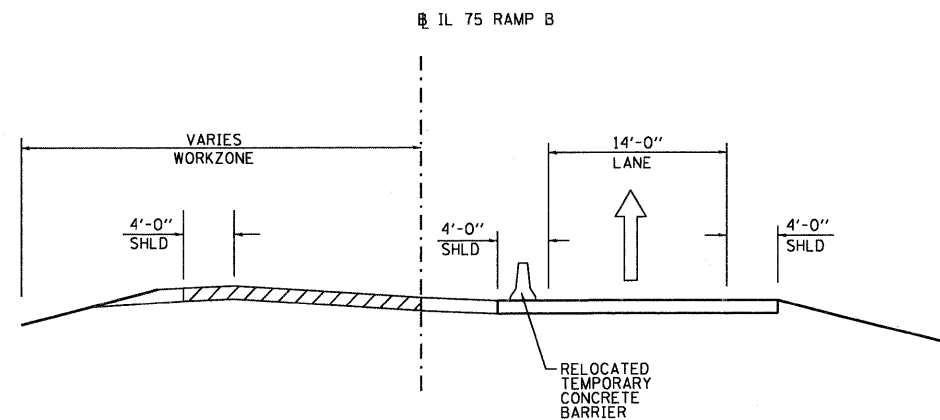


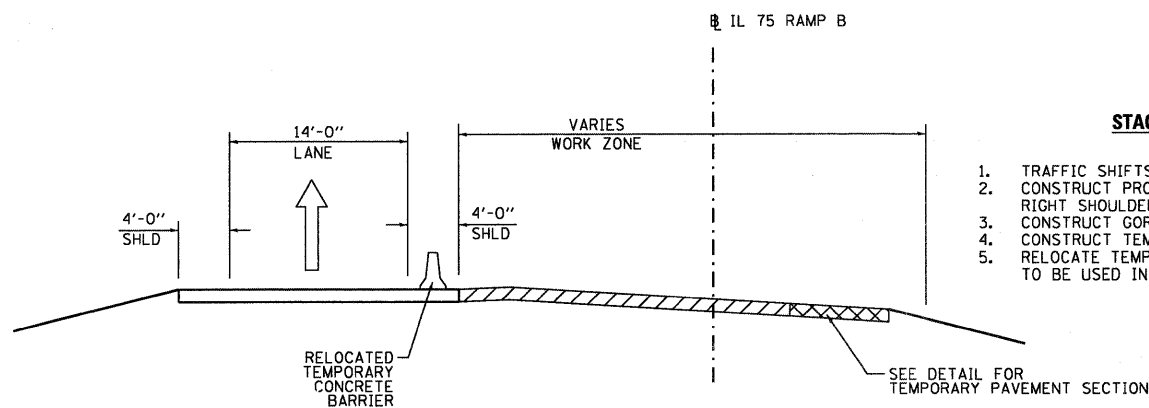
PRE-STAGE IL 75 RAMP B
TYPICAL SECTION
 STA 20007+70.80 TO STA 20010+98.17

- PRE-STAGE WORK**
1. TRAFFIC REMAINS ON EXISTING LANE AND EXISTING RIGHT SHOULDER.
 2. CONSTRUCT TEMPORARY PAVEMENT.
 3. RELOCATE TEMPORARY CONCRETE BARRIER TO BE USED IN STAGE 2A.



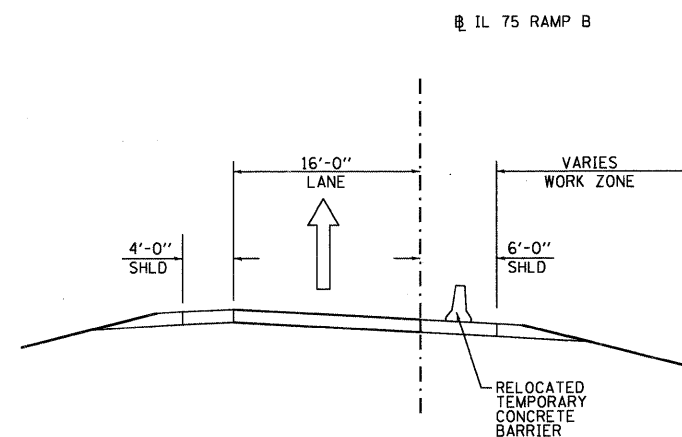
STAGE 2B IL 75 RAMP B
TYPICAL SECTION
 STA 20006+45.20 TO STA 20010+93.52

- STAGE 2B**
1. TRAFFIC SHIFTS TO TEMPORARY LANE.
 2. REMOVE TEMPORARY PAVEMENT LOCATED ALONG LEFT SIDE OF PROPOSED PAVEMENT.
 3. CONSTRUCT REMAINING PROPOSED RAMP PAVEMENT.
 4. CONSTRUCT REMAINING GORE AREA.
 5. CONSTRUCT LEFT SHOULDER.
 6. CONSTRUCT LEFT DITCH AND REGRADE SLOPES.
 7. RELOCATE TEMPORARY CONCRETE BARRIER TO BE USED IN STAGE 2C.



STAGE 2A IL 75 RAMP B
TYPICAL SECTION
 STA 20004+06.67 TO STA 20013+92.52

- STAGE 2A**
1. TRAFFIC SHIFTS TO TEMPORARY RAMP.
 2. CONSTRUCT PROPOSED RAMP PAVEMENT AND RIGHT SHOULDER.
 3. CONSTRUCT GORE AREA.
 4. CONSTRUCT TEMPORARY PAVEMENT
 5. RELOCATE TEMPORARY CONCRETE BARRIER TO BE USED IN STAGE 2B.



STAGE 2C IL 75 RAMP B
TYPICAL SECTION
 STA 20004+06.67 TO STA 20013+92.52

- STAGE 2C**
1. TRAFFIC SHIFTS TO PROPOSED PAVEMENT.
 2. REMOVE TEMPORARY PAVEMENT.
 3. CONSTRUCT REMAINING RIGHT DITCH AND REGRADE SLOPES.

LEGEND

- TRAFFIC LANE
- TEMPORARY CONCRETE BARRIER
- PROPOSED PAVEMENT/SHOULDER
- TEMPORARY PAVEMENT - SEE DETAIL



USER NAME = USERNAME	DESIGNED - MM	REVISED -
FILE NAME = D206606-sh2-staging.dgn	DRAWN - CM	REVISED -
PLOT SCALE = 20.0000' / in.	CHECKED - MM	REVISED -
PLOT DATE = 10/19/2011	DATE - 10/21/2011	REVISED -

STATE OF ILLINOIS
DEPARTMENT OF TRANSPORTATION

MAINTENANCE OF TRAFFIC
STAGE 2 - TYPICAL SECTIONS IL 75 RAMP B

SCALE: N.T.S. SHEET NO. 2 OF 4 SHEETS STA. TO STA.

F.A.I. RTE.	SECTION	COUNTY	TOTAL SHEETS	SHEET NO.
90	(X2-1)R	WINNEBAGO	510	125
CONTRACT NO. 64C29			[ILLINOIS] FED. AID PROJECT	