

WORK ZONE W2-1115(0)-3618

SPEED LIMIT R2-1-3648

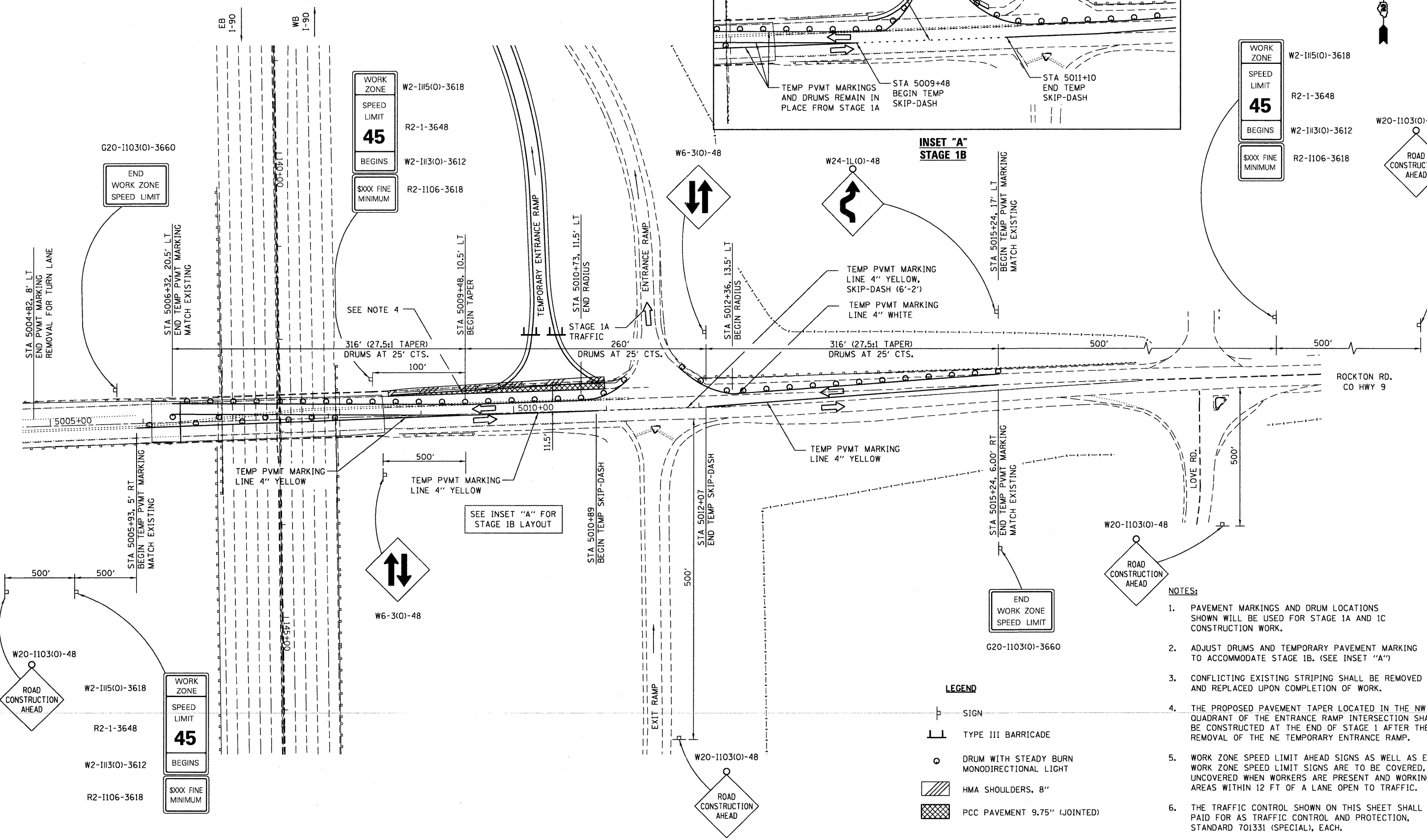
45

BEGINS W2-1113(0)-3612

\$\$\$ FINE MINIMUM R2-1106-3618

W20-1103(0)-48

ROAD CONSTRUCTION AHEAD



- NOTES:**
1. PAVEMENT MARKINGS AND DRUM LOCATIONS SHOWN WILL BE USED FOR STAGE 1A AND 1C CONSTRUCTION WORK.
 2. ADJUST DRUMS AND TEMPORARY PAVEMENT MARKING TO ACCOMMODATE STAGE 1B. (SEE INSET "A")
 3. CONFLICTING EXISTING STRIPING SHALL BE REMOVED AND REPLACED UPON COMPLETION OF WORK.
 4. THE PROPOSED PAVEMENT TAPER LOCATED IN THE NW QUADRANT OF THE ENTRANCE RAMP INTERSECTION SHALL BE CONSTRUCTED AT THE END OF STAGE 1 AFTER THE REMOVAL OF THE NE TEMPORARY ENTRANCE RAMP.
 5. WORK ZONE SPEED LIMIT AHEAD SIGNS AS WELL AS END WORK ZONE SPEED LIMIT SIGNS ARE TO BE COVERED, BUT UNCOVERED WHEN WORKERS ARE PRESENT AND WORKING IN AREAS WITHIN 12 FT OF A LANE OPEN TO TRAFFIC.
 6. THE TRAFFIC CONTROL SHOWN ON THIS SHEET SHALL BE PAID FOR AS TRAFFIC CONTROL AND PROTECTION, STANDARD 701331 (SPECIAL), EACH.

LEGEND

- SIGN
- TYPE III BARRICADE
- DRUM WITH STEADY BURN MONODIRECTIONAL LIGHT
- HMA SHOULDERS, 8"
- PCC PAVEMENT 9.75" (JOINTED)

END WORK ZONE SPEED LIMIT

WORK ZONE W2-1115(0)-3618

SPEED LIMIT R2-1-3648

45

BEGINS W2-1113(0)-3612

\$\$\$ FINE MINIMUM R2-1106-3618

WORK ZONE W2-1115(0)-3618

SPEED LIMIT R2-1-3648

45

BEGINS W2-1113(0)-3612

\$\$\$ FINE MINIMUM R2-1106-3618