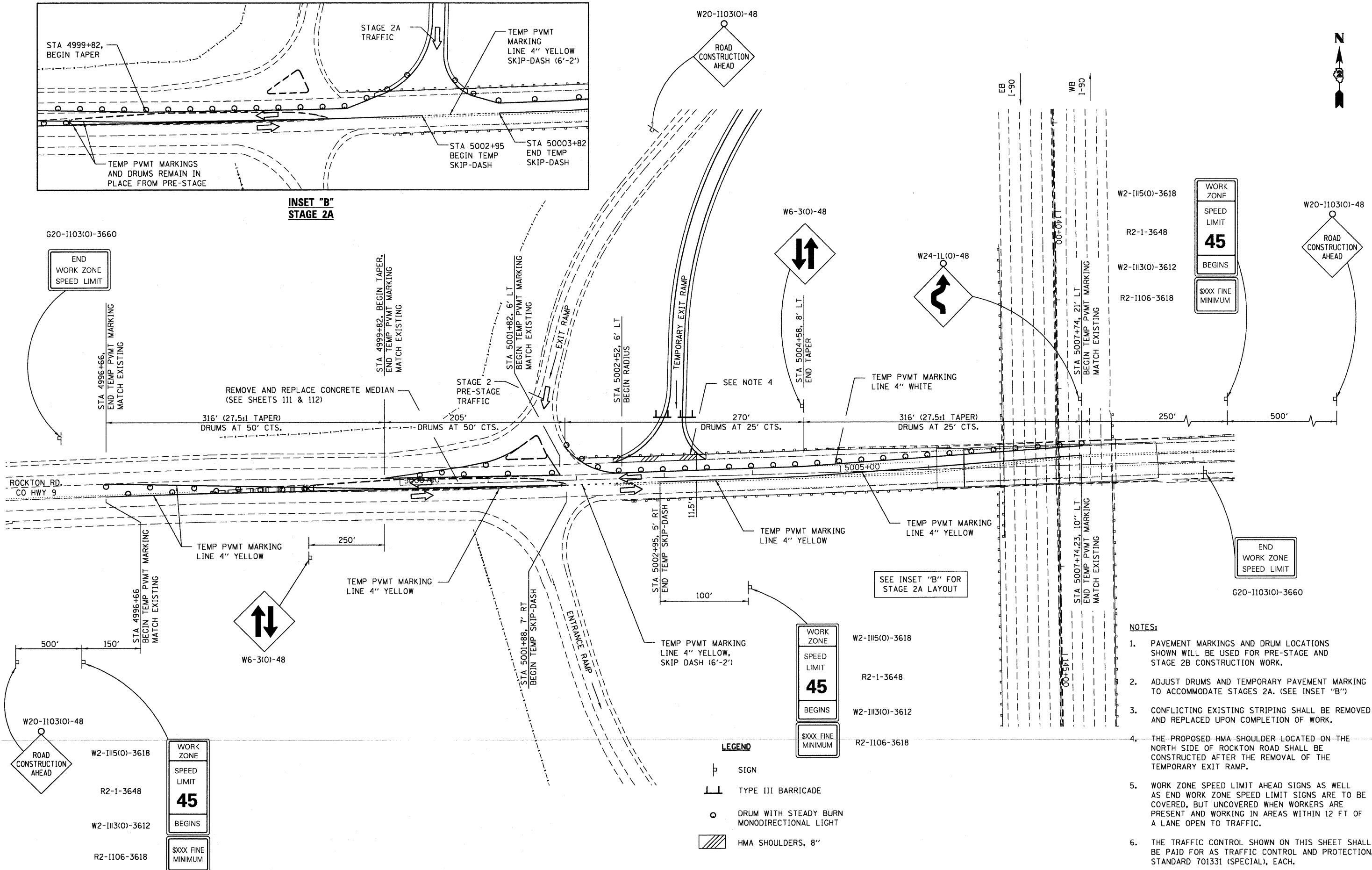


**INSET "B"  
STAGE 2A**



- NOTES:**
1. PAVEMENT MARKINGS AND DRUM LOCATIONS SHOWN WILL BE USED FOR PRE-STAGE AND STAGE 2B CONSTRUCTION WORK.
  2. ADJUST DRUMS AND TEMPORARY PAVEMENT MARKING TO ACCOMMODATE STAGES 2A. (SEE INSET "B")
  3. CONFLICTING EXISTING STRIPING SHALL BE REMOVED AND REPLACED UPON COMPLETION OF WORK.
  4. THE PROPOSED HMA SHOULDER LOCATED ON THE NORTH SIDE OF ROCKTON ROAD SHALL BE CONSTRUCTED AFTER THE REMOVAL OF THE TEMPORARY EXIT RAMP.
  5. WORK ZONE SPEED LIMIT AHEAD SIGNS AS WELL AS END WORK ZONE SPEED LIMIT SIGNS ARE TO BE COVERED, BUT UNCOVERED WHEN WORKERS ARE PRESENT AND WORKING IN AREAS WITHIN 12 FT OF A LANE OPEN TO TRAFFIC.
  6. THE TRAFFIC CONTROL SHOWN ON THIS SHEET SHALL BE PAID FOR AS TRAFFIC CONTROL AND PROTECTION, STANDARD 701331 (SPECIAL), EACH.

**LEGEND**

	SIGN
	TYPE III BARRICADE
	DRUM WITH STEADY BURN MONODIRECTIONAL LIGHT
	HMA SHOULDERS, 8"

WORK ZONE	W2-II15(O)-3618
SPEED LIMIT	R2-1-3648
<b>45</b>	W2-II13(O)-3612
BEGINS	R2-II06-3618
\$XXX FINE MINIMUM	

WORK ZONE	W2-II15(O)-3618
SPEED LIMIT	R2-1-3648
<b>45</b>	W2-II13(O)-3612
BEGINS	R2-II06-3618
\$XXX FINE MINIMUM	