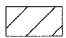

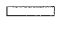



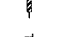
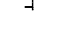
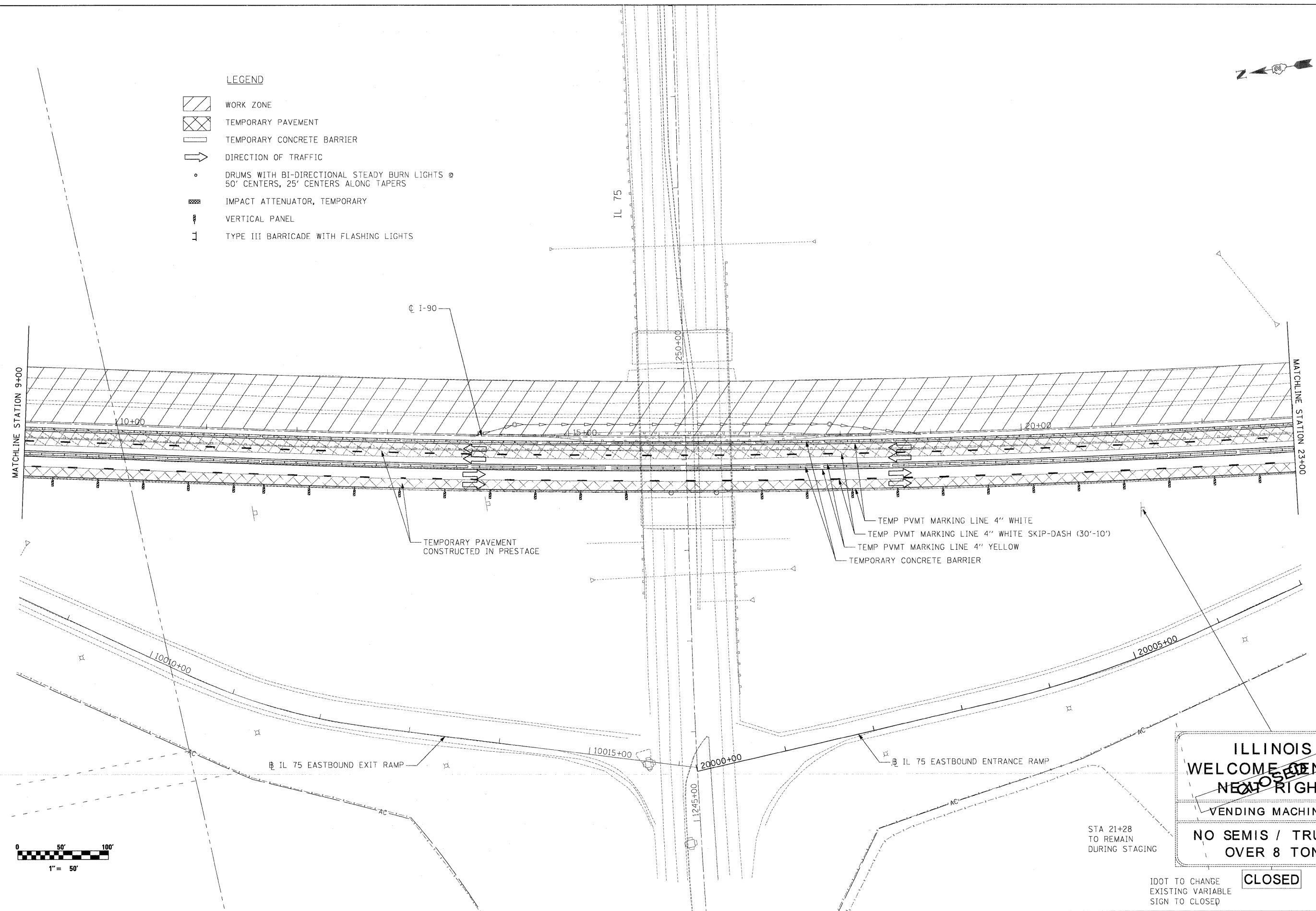




LEGEND

-  WORK ZONE
-  TEMPORARY PAVEMENT
-  TEMPORARY CONCRETE BARRIER
-  DIRECTION OF TRAFFIC
-  DRUMS WITH BI-DIRECTIONAL STEADY BURN LIGHTS @ 50' CENTERS, 25' CENTERS ALONG TAPERS
-  IMPACT ATTENUATOR, TEMPORARY
-  VERTICAL PANEL
-  TYPE III BARRICADE WITH FLASHING LIGHTS



ILLINOIS
WELCOME CENTER
~~NEW~~
CLOSED
 VENDING MACHINES
NO SEMIS / TRUCKS
OVER 8 TON

STA 21+28
 TO REMAIN
 DURING STAGING

CLOSED

IDOT TO CHANGE
 EXISTING VARIABLE
 SIGN TO CLOSED



USER NAME = .USERNAME.	DESIGNED - CGC	REVISED -
PLLOT SCALE = 50.0000' / IN.	DRAWN - CGC	REVISED -
PLLOT DATE = 10/19/2011	CHECKED - AM	REVISED -
	DATE - 10/14/2011	REVISED -

STATE OF ILLINOIS
DEPARTMENT OF TRANSPORTATION

MOT I-90 STAGE 1A

SCALE: 1"=50' SHEET NO. OF SHEETS STA. 9+00 TO STA. 23+00

F.A.I. RTE.	SECTION	COUNTY	TOTAL SHEETS	SHEET NO.
90	(X2-1)R	WINNEBAGO	510	146
CONTRACT NO. 64C29				
ILLINOIS FED. AID PROJECT				