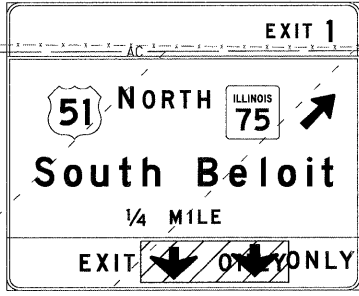
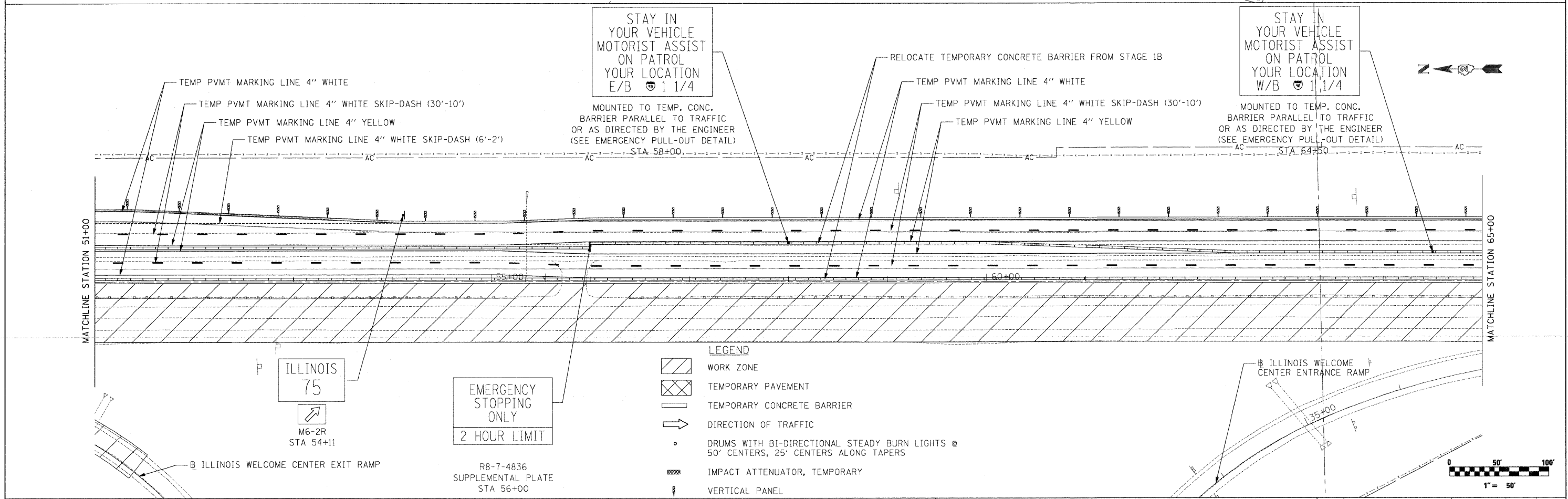


STA 45+50  
 PROPOSED SIGN PANEL  
 SEE SIGNING PLAN  
 WITH TEMPORARY MODIFICATIONS:  
 COVER EXISTING ARROW AND "ONLY" AND  
 PLACE TEMP ARROW AND "ONLY" TO THE RIGHT



EMERGENCY STOPPING ONLY  
 1000 FEET  
 R8-7-4836  
 SUPPLEMENTAL PLATE  
 MOUNT ABOVE TEMP. CONC.  
 BARRIER CENTERED BETWEEN  
 YELLOW TRAFFIC PAVEMENT  
 MARKINGS  
 STA 46+00

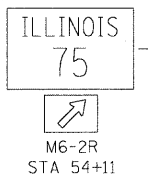


STAY IN YOUR VEHICLE  
 MOTORIST ASSIST  
 ON PATROL  
 YOUR LOCATION  
 E/B I 1/4  
 MOUNTED TO TEMP. CONC.  
 BARRIER PARALLEL TO TRAFFIC  
 OR AS DIRECTED BY THE ENGINEER  
 (SEE EMERGENCY PULL-OUT DETAIL)  
 STA 58+00

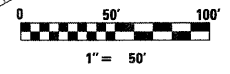
STAY IN YOUR VEHICLE  
 MOTORIST ASSIST  
 ON PATROL  
 YOUR LOCATION  
 W/B I 1/4  
 MOUNTED TO TEMP. CONC.  
 BARRIER PARALLEL TO TRAFFIC  
 OR AS DIRECTED BY THE ENGINEER  
 (SEE EMERGENCY PULL-OUT DETAIL)  
 STA 64+50

EMERGENCY STOPPING ONLY  
 2 HOUR LIMIT  
 R8-7-4836  
 SUPPLEMENTAL PLATE  
 STA 56+00

- LEGEND**
- WORK ZONE
  - TEMPORARY PAVEMENT
  - TEMPORARY CONCRETE BARRIER
  - DIRECTION OF TRAFFIC
  - DRUMS WITH BI-DIRECTIONAL STEADY BURN LIGHTS @ 50' CENTERS, 25' CENTERS ALONG TAPERS
  - IMPACT ATTENUATOR, TEMPORARY
  - VERTICAL PANEL



ILLINOIS WELCOME CENTER ENTRANCE RAMP



**McClure LOCHNER**  
 Engineering Associates, Inc.  
**RWA**  
 R. W. Anderson & Associates, Inc.

USER NAME = .USERNAME.	DESIGNED - CGC	REVISED -
PLLOT SCALE = 50.0000' / IN.	DRAWN - CGC	REVISED -
PLLOT DATE = 10/19/2011	CHECKED - AM	REVISED -
	DATE - 10/14/2011	REVISED -

**STATE OF ILLINOIS  
 DEPARTMENT OF TRANSPORTATION**

**MOT I-90 STAGE 2A**

SCALE: 1"=50' SHEET NO. OF SHEETS STA. 37+00 TO STA. 65+00

F.A.I. RTE.	SECTION	COUNTY	TOTAL SHEETS	SHEET NO.
90	(X2-1)R	WINNEBAGO	510	176
			CONTRACT NO. 64C29	

ILLINOIS FED. AID PROJECT