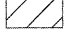


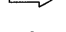



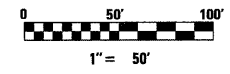
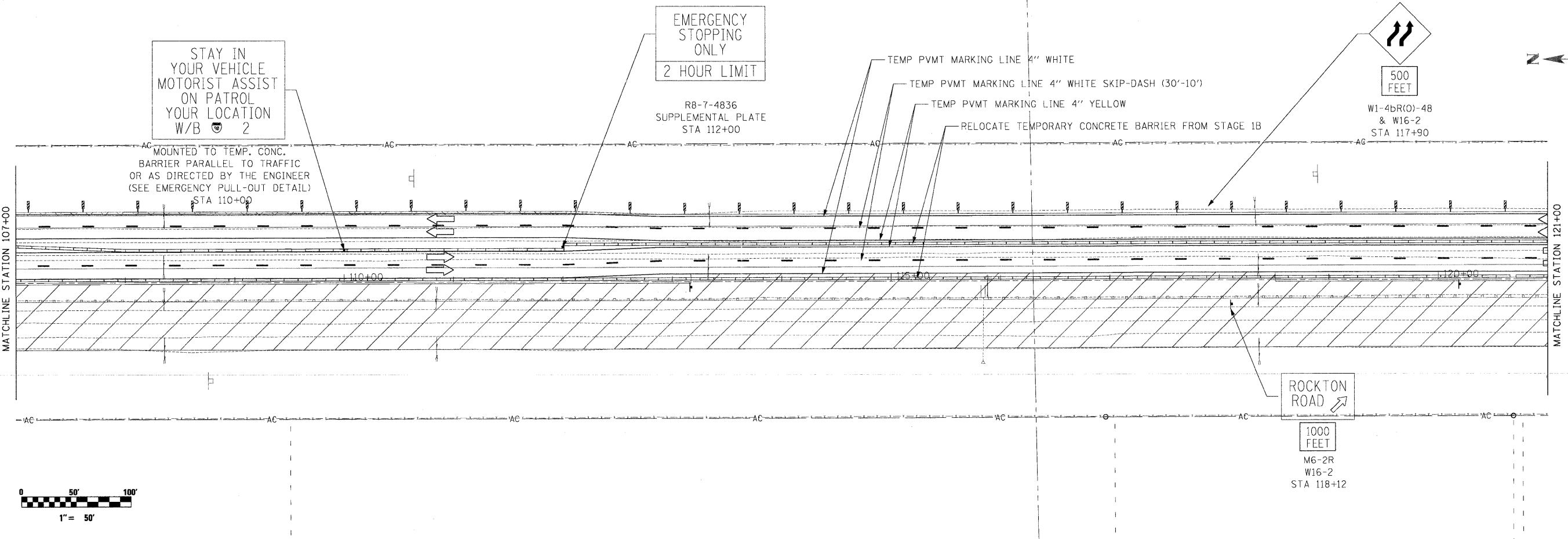
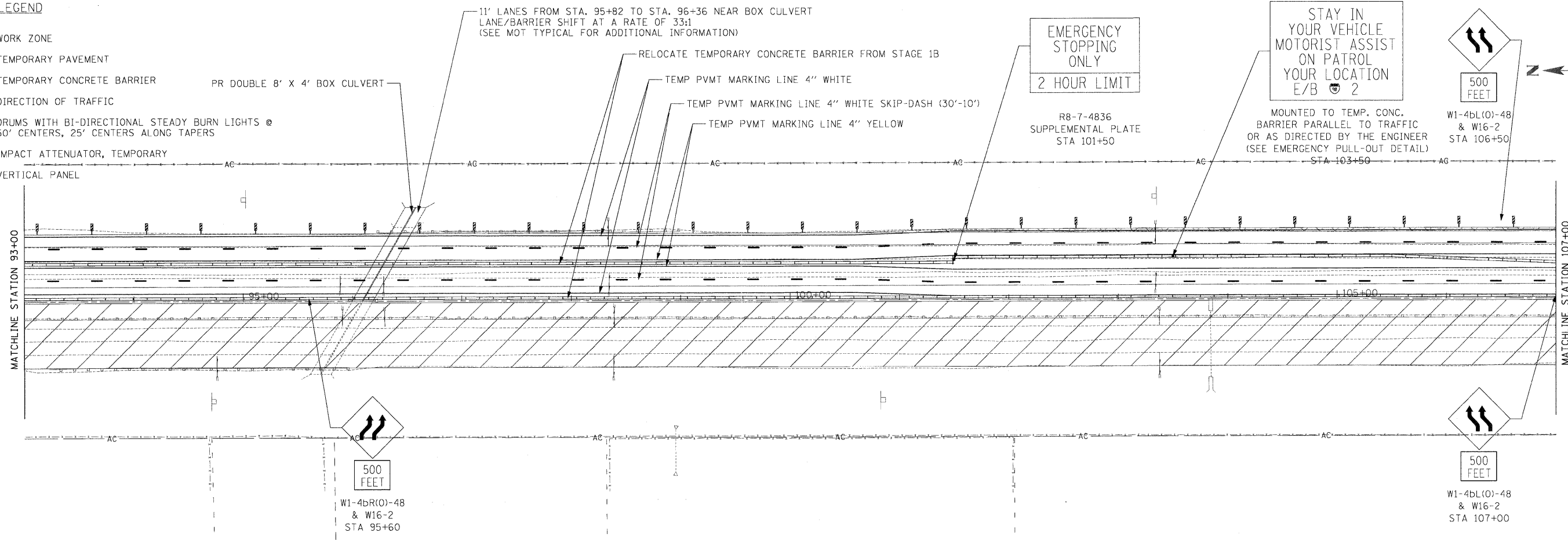





LEGEND

-  WORK ZONE
-  TEMPORARY PAVEMENT
-  TEMPORARY CONCRETE BARRIER
-  DIRECTION OF TRAFFIC
-  DRUMS WITH BI-DIRECTIONAL STEADY BURN LIGHTS @ 50' CENTERS, 25' CENTERS ALONG TAPERS
-  IMPACT ATTENUATOR, TEMPORARY
-  VERTICAL PANEL



  	USER NAME = .USERNAME. PLOT SCALE = 50.0000' / IN. PLOT DATE = 10/19/2011	DESIGNED - CGC DRAWN - CGC CHECKED - AM DATE - 10/14/2011	REVISED - REVISED - REVISED - REVISED -	STATE OF ILLINOIS DEPARTMENT OF TRANSPORTATION	MOT I-90 STAGE 2A	F.A.I. RTE. 90 SECTION (X2-1)R COUNTY WINNEBAGO CONTRACT NO. 64C29	TOTAL SHEETS 510 SHEET NO. 178
	SCALE: 1"=50' SHEET NO. OF SHEETS STA. 93+00 TO STA. 121+00				ILLINOIS FED. AID PROJECT		